



**Upcoming events:**

- March 5—MBCIA Annual Membership and Educational Meeting and Supper, Raymond, MS
- March 6—Hinds Bull Test and MBCIA Spring Bull and Heifer Sale, Raymond, MS
- March 11—Beef Mythbusters Workshop, MSU, Hattiesburg, Magnolia, Oxford, Raymond, MS
- March 13-15—MSU-ES Cattle Artificial Insemination School, Mississippi State, MS
- March 24-25—Mississippi Fed Beef Challenge, MSU Meats Lab
- April 1—Cattlemen's Exchange Feeder Calf Board Sale, Winona, MS
- April 10—Magnolia Beef and Poultry Expo, Raleigh, MS

**Mississippi BCIA Annual Membership Meeting and Supper**

Space is still available for the Mississippi BCIA annual membership meeting and supper event. Mississippi BCIA will hold its annual membership meeting on Wednesday, March 6, 2013 starting at 6:00 p.m. at the Hinds Community College Bull Sale Facility in Raymond, MS.

The annual meeting is open to new and current MBCIA members. Many current MBCIA board members will be present and available to take input and ideas regarding the association's programs. A sponsored supper will be provided along with an educational program.

The program will feature Dr. Caleb Lemley, a reproductive physiologist with the MSU Animal and Dairy Sciences Department, speaking on "Fetal Programming: How Management during Gestation affects Beef Calf Performance".

The supper is sponsored by  AgriLabs. Dana Ankerstar will talk about AgriLabs' new VetGun remote parasiticide delivery system.

Please RSVP to Mari Quinn at:  
(662) 325-3516 or  
mquinn@ads.msstate.edu



**MBCIA Annual Membership Meeting**

**Wednesday, March 5, 2014, 6:00 p.m.  
Hinds CC Bull Sale Facility, Raymond,**

**MARCH 6, 2014 • Noon  
BULL SALE  
HINDS BULL TEST • MBCIA**



**80 Registered Bulls • 5 Breeds**

**Raymond, MS**

**Inside this issue:**

2014 Cattle Inventory Estimates	2
AgCensus Preliminary Results	3
Beef Cattle Boot Camps	3
Free BQA Training	4
MBCIA Membership Application	4

## 2014 Cattle Inventory Estimates



Recent Mississippi cattle inventory statistics show that stocker cattle numbers generally grew from 2012 to 2013

The U.S. Department of Agriculture (USDA) National Agricultural Statistics Service (NASS) released the January Cattle Inventory Report on January 31, 2014.

### United States cattle inventory estimates

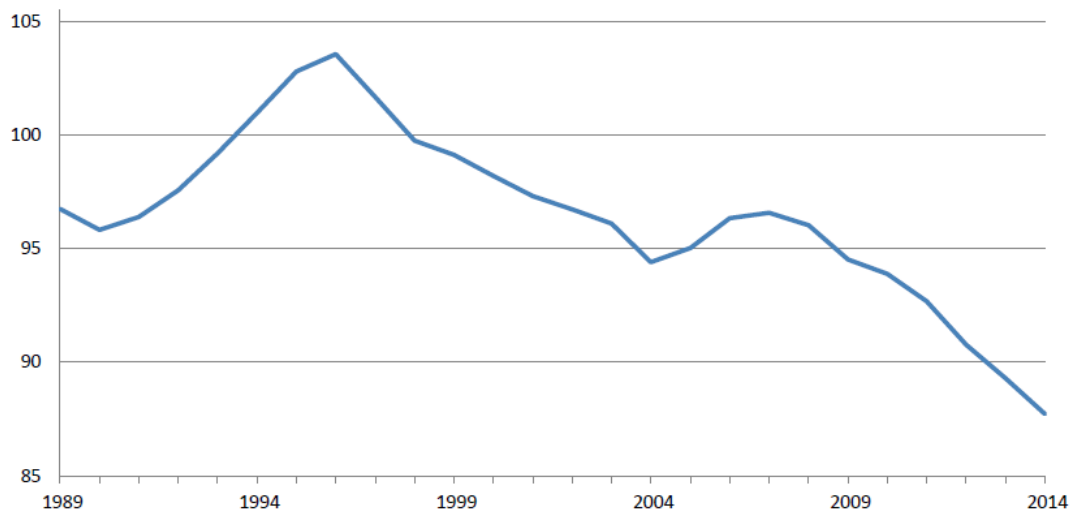
- U.S. cattle inventory declined by 2 percent in 2013
- On January 1, 2014, all cattle and calves in the U.S. totaled 87,730,000 head

### Mississippi estimates (cont.)

- Milk cows that have calved, at 13,000 head, were down 7 percent
- All heifers 500 pounds and over at 140,000 head, were up 17 percent
- Beef cow replacement heifers at 91,000 head, were up 17 percent
- Milk cow replacement heifers at 6,000 head, were down 14 percent

### Cattle Inventory – United States: January 1

Million head



### Mississippi cattle inventory estimates

- Mississippi January cattle inventory was up 2 percent from last year
- On January 1, 2014, all cattle and calves in Mississippi totaled 930,000 head
- All cows and heifers that have calved, at 490,000 head, were down 2 percent from the year before
- Beef cows that have calved, at 477,000 head, were down 2 percent year over year
- Other heifers at 43,000 head, were up 23 percent
- Steers weighing 500 pounds and over at 62,000 head, were up 51 percent
- Bulls weighing 500 pounds and over at 38,000 head, were down 3 percent
- Calves under 500 pounds at 200,000 head, were down 5 percent
- The 2013 calf crop is estimated at 400,000 head, steady from 2012

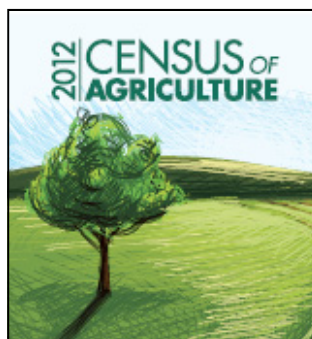
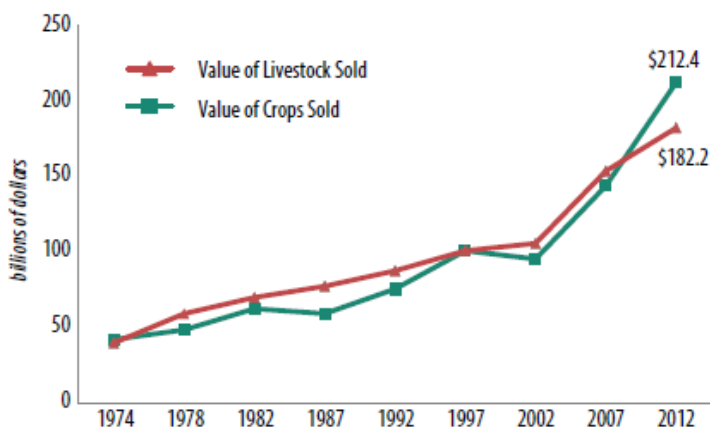
*“...Despite a continued trend of declining domestic cattle inventory, Mississippi cattle inventory grew slightly in 2013.”*

## Preliminary U.S. Ag Census Results Released

Over the coming months, results from the 2012 U.S. Census of Agriculture will be released. Preliminary highlights are already online at [www.agcensus.usda.gov/Publications/2012](http://www.agcensus.usda.gov/Publications/2012)

Information on the value of U.S. crop and livestock sales over time is shown in the graph below.

Value of U.S. Crop and Livestock Sales, 1974 - 2012



*“...The Census of Agriculture, conducted every 5 years, provides a detailed picture of U.S. farms and ranches and the people who operate them.”*

Source: USDA NASS, 2012 Census of Agriculture, Preliminary Report and prior Census of Agriculture data.

## Hands-on Knowledge—Beef Cattle Boot Camps

The Beef Cattle Boot Camps offered through the Mississippi State University Extension Service and Mississippi Agricultural and Forestry Experiment Stations (MAFES) are an opportunity to gain hands-on experience with cattle management skills.

The 2014 Boot Camps are scheduled for Friday, April 4, 2014 at the MAFES South Farm Beef Unit on the Mississippi State University campus and Friday, April 11, 2014 at the MAFES Brown Loam Branch Station in Raymond, MS. The program will be the same at each location.

The 2014 Boot Camp topics include:

- ✓ Breeding soundness evaluations
- ✓ Cattle evaluation
- ✓ Using EPDs
- ✓ BQA certification
- ✓ Farm safety
- ✓ Marketing scenarios
- ✓ Forage ID
- ✓ Fencing techniques



Registration fees are \$35 per person in advance and \$45 per person at the door. A lunch meal will be provided to Boot Camp participants. For more information on the Beef Cattle Boot Camps, contact Jane Parish, in the MSU Animal and Dairy Sciences Department at [jparish@ads.msstate.edu](mailto:jparish@ads.msstate.edu) or 662-325-7466. Boot Camp brochures are available online at [msucares.com/livestock/beef/beef\\_calendar.html](http://msucares.com/livestock/beef/beef_calendar.html)



The Boot Camps take place on MAFES research stations and provide for hands-on experience in practical cattle operation management

*“The Beef Cattle Boot Camp topics change each year, so past attendees can learn new information at each Boot Camp...”*

# BEEF CATTLE BOOT CAMP

Mississippi Beef Cattle Improvement  
Association—Productivity and Quality

Mississippi Beef Cattle Improvement Assn.  
Box 9815  
Mississippi State, MS 39762

Phone: 662-325-7466  
Fax: 662-325-8873  
Email: jparish@ads.msstate.edu

Send questions or comments to Jane Parish,  
Extension Beef Cattle Specialist,  
Mississippi State University Extension Service

*Joe Parish*



MISSISSIPPI STATE  
UNIVERSITY  
EXTENSION SERVICE

Mississippi State  
University does not discriminate on the  
basis of race, color, religion, national  
origin, sex, sexual orientation or group  
affiliation, age, disability, or veteran status.

Visit MBCIA online at  
[http://msucares.com/  
livestock/beef/mbcia/](http://msucares.com/livestock/beef/mbcia/)

MISSISSIPPI  
**BCIA** Membership Application  
BEEF CATTLE IMPROVEMENT ASSOCIATION

Name: \_\_\_\_\_

Address: \_\_\_\_\_

City: \_\_\_\_\_

County: \_\_\_\_\_ State: \_\_\_\_\_ Zip: \_\_\_\_\_

Phone: \_\_\_\_\_ Email: \_\_\_\_\_

(Check one) Seedstock:  Commercial:

Cattle breed(s): \_\_\_\_\_

Completed applications and \$5 annual dues or \$100 life-time dues payable to Mississippi BCIA should be mailed to:  
Mississippi Beef Cattle Improvement Association  
Box 9815, Mississippi State, MS 39762

**Free Beef Quality Assurance Training Opportunity Until April 15**

**JOIN THE TEAM!**  
**Get BQA certified for FREE!**

Thanks to a partnership with Boehringer Ingelheim  
Vetmedica, Inc. , you can become BQA certified  
for FREE. Visit [www.bqa.org/team](http://www.bqa.org/team) or  
[www.BIVI-BQA.com](http://www.BIVI-BQA.com) by April 15 and sign  
up for online BQA certification training.  
*It's an easy way to show you care!*



**BQA – it's the  
right thing**

