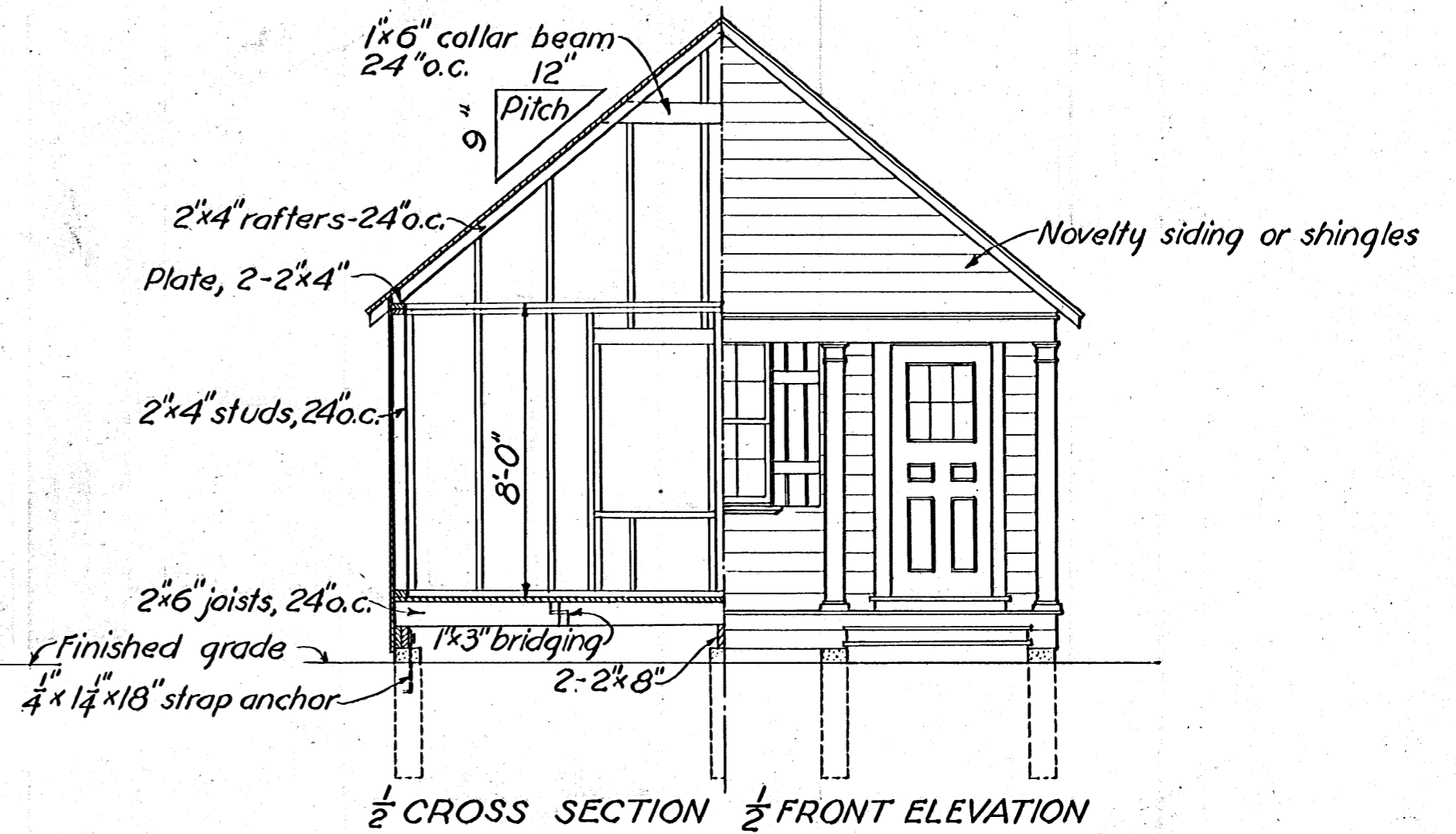
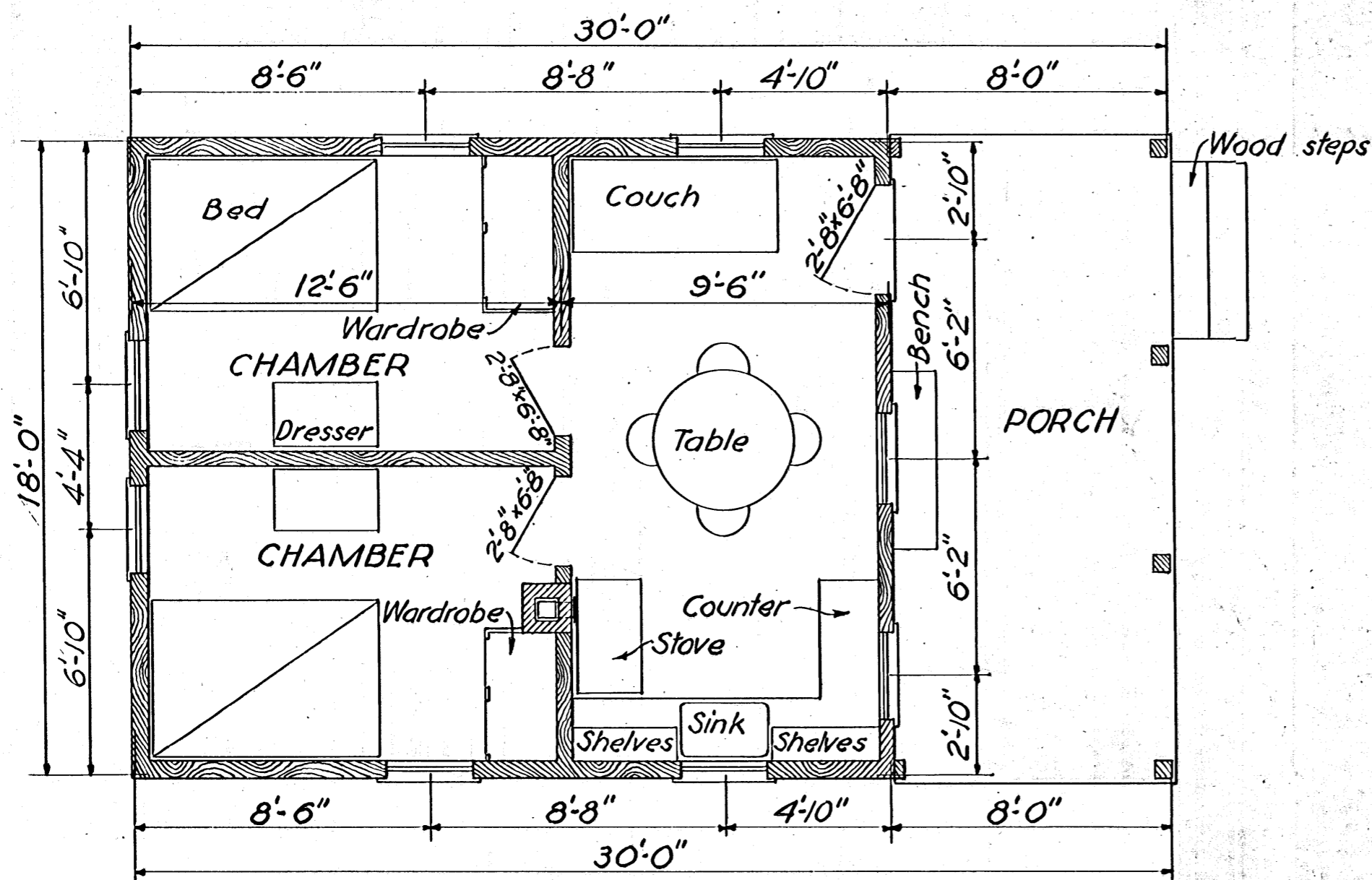


SIDE ELEVATION



1/2 CROSS SECTION 1/2 FRONT ELEVATION



FLOOR PLAN
Scale 1/4" = 1'-0"

BILL OF MATERIALS

CONCRETE-1:2:4

7 bags cement, 1/2 cu.yd. sand, 1 cu.yd. gravel, = 1.15 cu.yds. concrete

CHIMNEY

750 brick, 12 lin. ft. 8x8" flue lining, Mortar = 2 bags lime, 2 1/2 bags cement, 1/2 cu.yd. sand.

LUMBER

- 9-2x8x16'-0" girders
- 7-2x6x16'-0" girders & plates
- 21-2x6x18'-0" joists
- 8-2x6x12'-0" plates
- 36-2x4x12'-0" rafters
- 1-2x10x8'-0" step carriage
- 7-1x6x14'-0" collar ties
- 140 lin. ft. 1x3" bridging
- 875 ft. B.M. 1x6" roof sheathing
- 1050 ft. B.M. 1x6" siding
- 675 ft. B.M. 1x4" flooring
- 760 sq. ft. roof area.
- 300 sq. ft. wallboard or beaded ceiling (interior partitions)
- 4-6x6x7'-0" porch posts
- 2-4x6x7'-0" porch pilasters
- 36 lin. ft. 1x8" porch trim
- 54 lin. ft. 1x6" porch trim
- 350 lin. ft. 1x4" trim
- 36 lin. ft. 2" drip cap moulding
- 1 double-hung window, 12 ft. 2'-8"x3'-10"
- 7 double-hung windows, 12 ft. 2'-8"x4'-6"
- 8 window frames with outside trim and shutters
- 1-2'-8"x6'-8"x1 1/4" glazed door
- 1-door frame with outside trim
- 2-2'-6"x6'-8"x1 1/8" inside doors

MISCELLANEOUS

- 16-1/4 x 1 1/4 x 18" strap anchors & 1/4" lag screws
- 1-terra-cotta stovepipe thimble
- 1-piece sheet metal, 24x60" flashing
- Hardware, nails, paint, and equipment as selected

COOPERATIVE EXTENSION WORK IN
AGRICULTURE AND HOME ECONOMICS
STATE OF MISSISSIPPI
MISSISSIPPI STATE UNIVERSITY
AND
UNITED STATES DEPARTMENT OF AGRICULTURE COOPERATING

TOURIST CABIN
5 PERSONS

USDA '48 EX. 5185 SHEET 1 OF 1