

HIGH CENTER CONSTRUCTION
(Where Greater Hay Storage is Desired)

IF LOFT IS ADDED, USE 2x10x14" JOISTS 2" O.C., RESTING IN THE CENTER ON A GIRDER, BUILT UP OF FOUR 2x10'S AND SUPPORTED BY 6" COLUMNS 10" O.C.

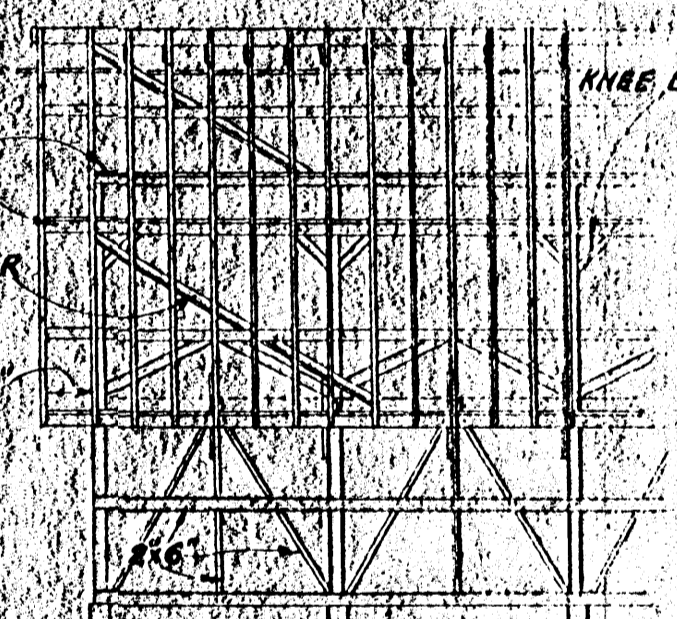
BRACES "E", ARE TO BE LAG SCREWED INTO THE POLE & NAILED TO THE ENDS OF BRACES "C" & "D"

DETAIL OF POST "A"

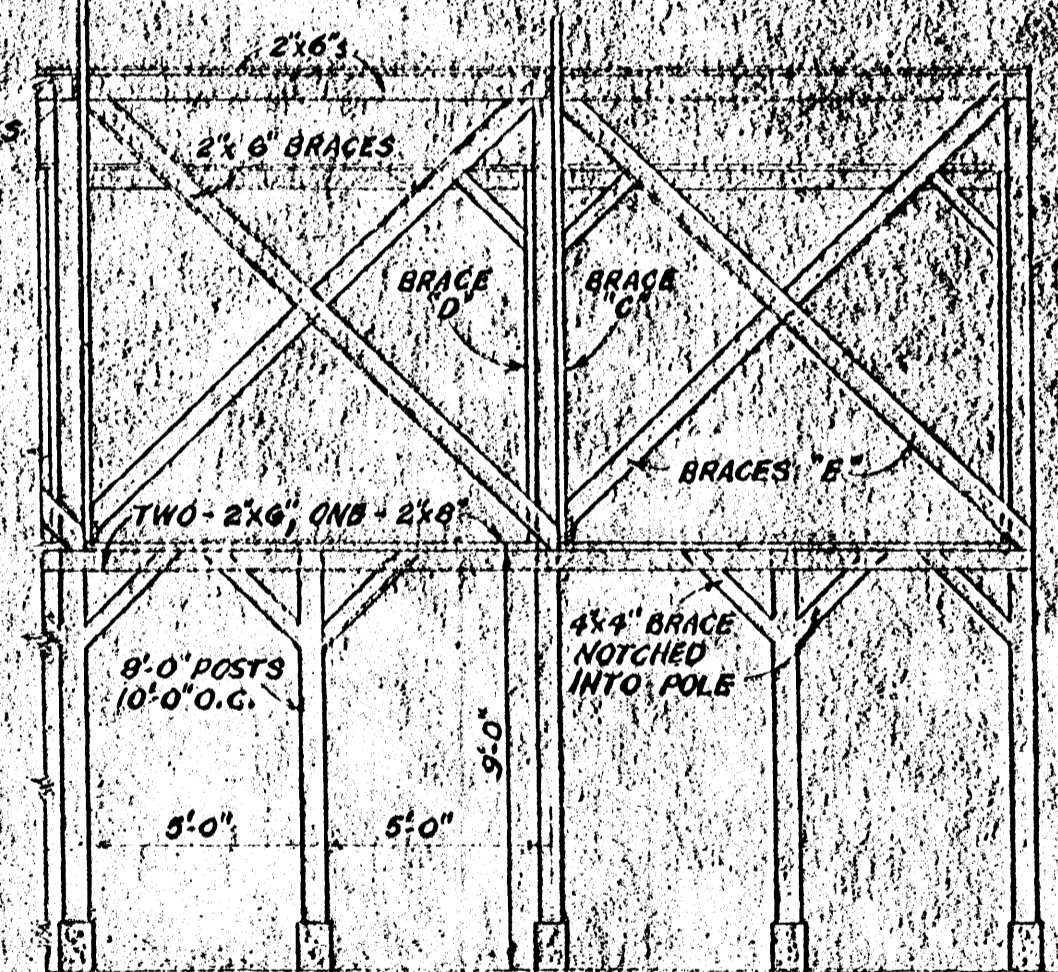
TABLE OF HAY STORAGE CAPACITY
(Per Foot of Barn Length)

1. Storage with loft floor 97 tons
2. Storage without loft floor 1.05 tons
3. Where High Center Construction is used, add 1.9 tons to each of the above figures.

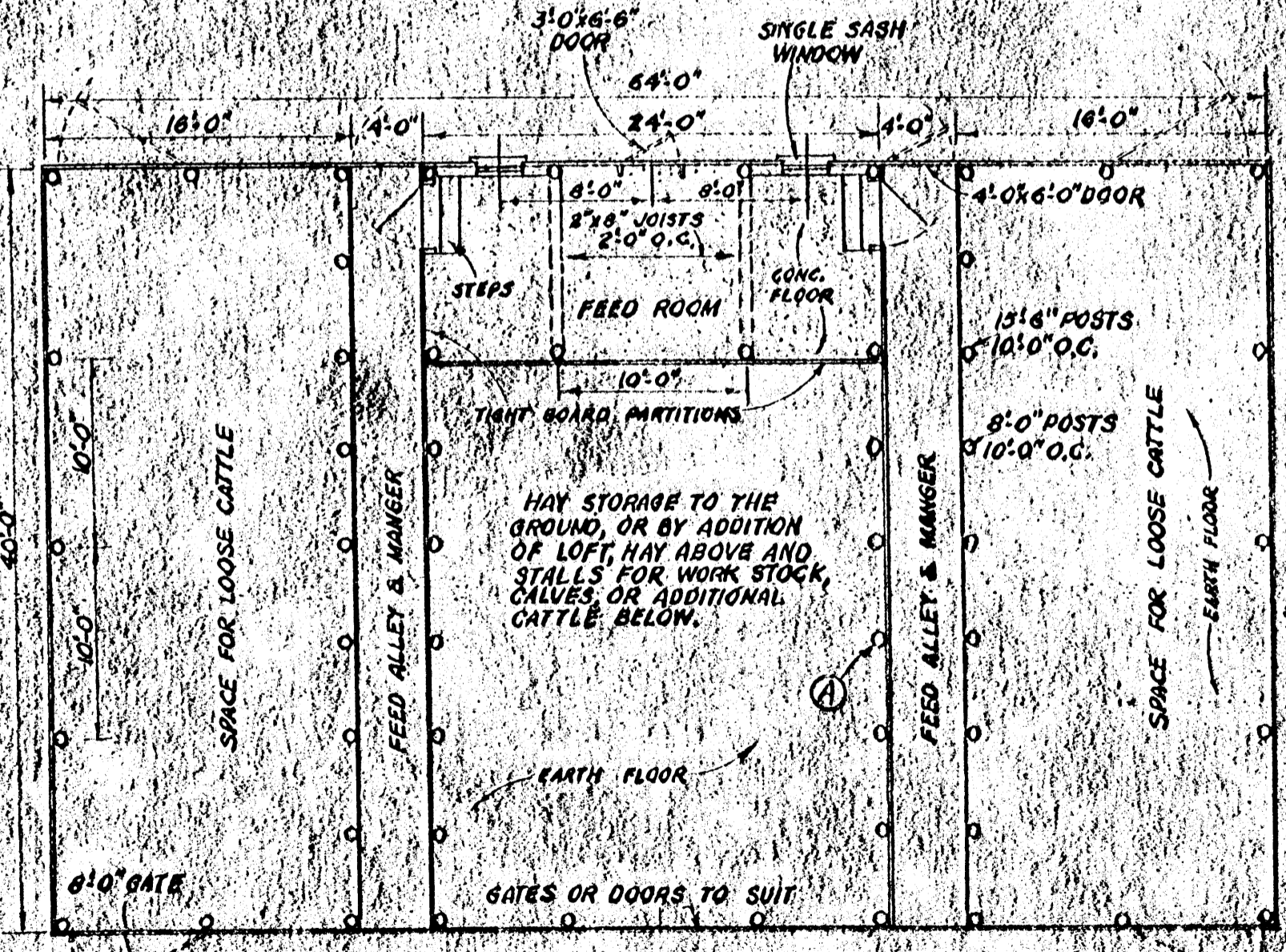
CROSS SECTION
SCALE: 1/4"=1'-0"



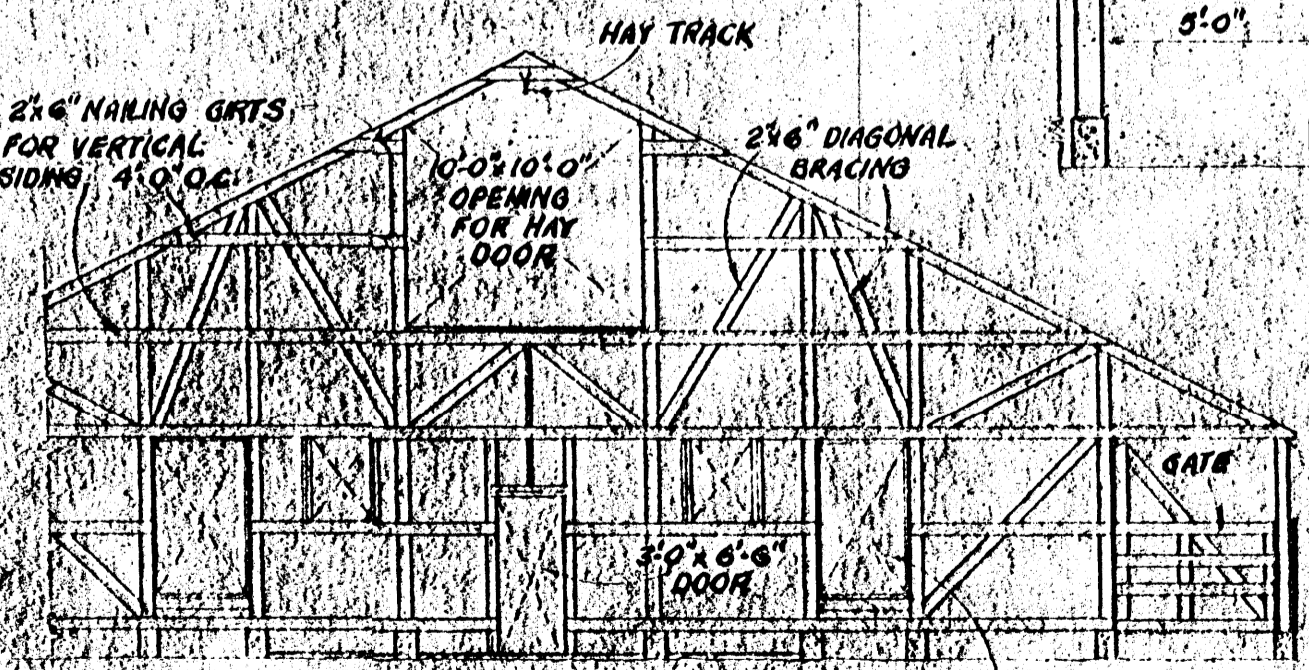
TYPICAL SIDE FRAMING



PART SECTION "A-A"



PLAN
SCALE 1/8"=1'-0"



NORTH END FRAMING
SCALE 1/8"=1'-0"

COOPERATIVE EXTENSION WORK IN
AGRICULTURE AND HOME ECONOMICS

AND
U. S. DEPT. OF AGRICULTURE COOPERATING

CATTLE SHED
EX 5567
724-5567 SHEET 1 of 1