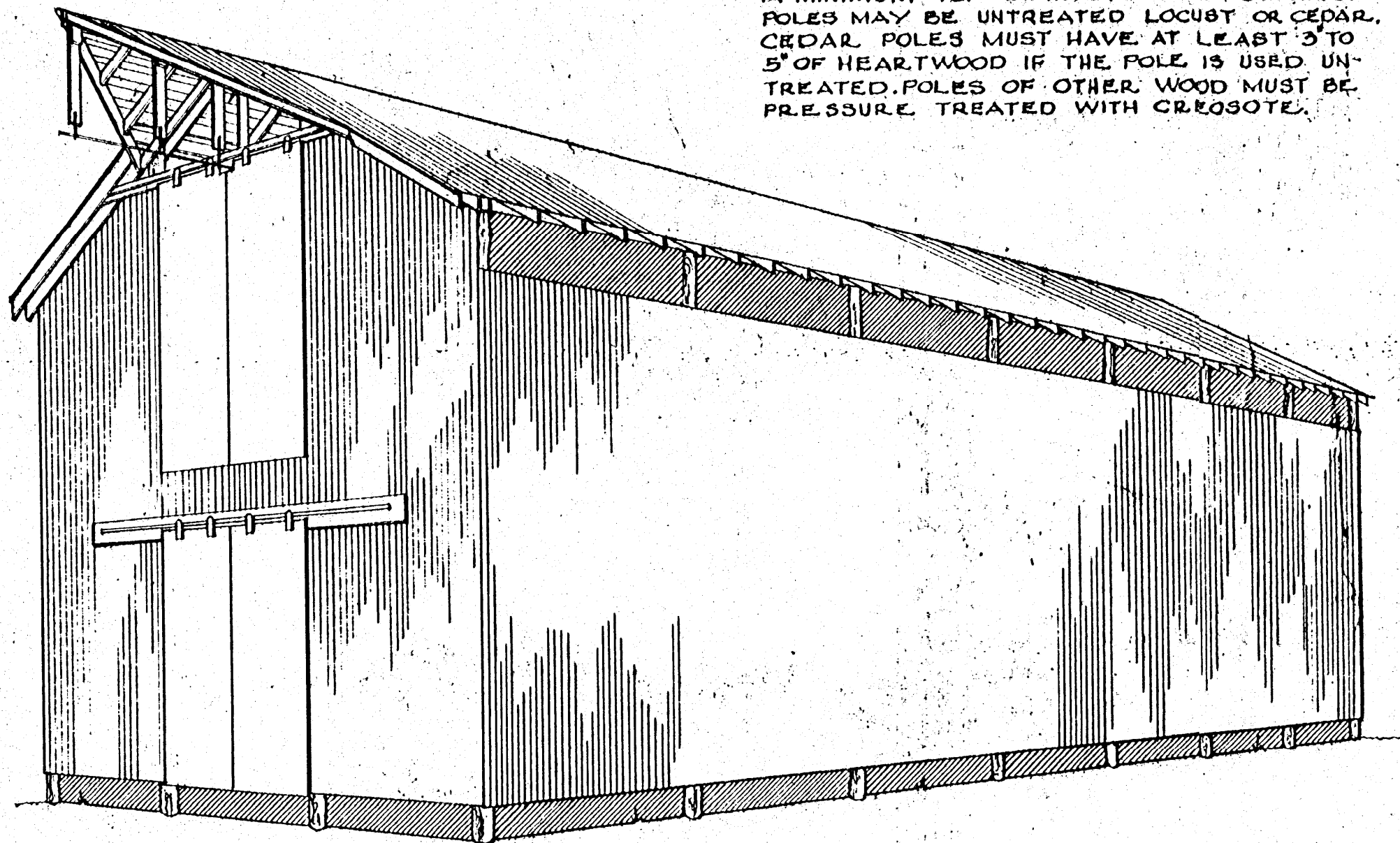


FLOOR PLAN
SCALE 1/8"=1'-0"

APPROXIMATE CAPACITY OF BARN		
MATERIAL	DEPTH IN FEET	TONS PER FOOT OF LENGTH
LOOSE HAY-FIELD CURED	18	7/8
BALED STRAW	18	2 1/6
BALED HAY-FIELD CURED	18	2 1/2
LOOSE HAY-ON HAY DRIER	12 to 15	7/8 to 1 1/5
CHOPPED HAY-ON HAY DRIER	12 to 15	1 to 1 1/3
BALED HAY-ON HAY DRIER	12	1 1/4

NOTE

POLES USED FOR THIS BARN MUST HAVE A MINIMUM TOP DIAMETER OF SIX INCHES. POLES MAY BE UNTREATED LOCUST OR CEDAR. CEDAR POLES MUST HAVE AT LEAST 3 TO 5" OF HEARTWOOD IF THE POLE IS USED UNTREATED. POLES OF OTHER WOOD MUST BE PRESSURE TREATED WITH CREOSOTE.



PICTURE VIEW

BILL OF MATERIALS

SIDES & ENDS

- POLES - 16, 25'-0" LONG, WITH 6" MINIMUM TOP DIAMETER.
- 4, 31'-0" LONG, WITH 6" MINIMUM TOP DIAMETER.
- NAILING GIRTS - 95 PCS. 2"x6"x10'-0"
- 28 PCS. 2"x6"x8'-0"
- LATERAL BRACES - 36 PCS. 2"x4"x8'-0"
- SIDING - TO COVER 3100 SQUARE FEET
- PLATES - 14 PCS. 2"x6"x10'-0"
- PLATE GIRDERS - 14 PCS. 2"x10"x10'-0"
- SLIDING DOORS - 4, 4'-2"x10'-0"
- 2 PCS. 2"x10"x16'-0"
- TRACK & HANGERS

ROOF

- RAFTERS - 72 PCS. 2"x6"x16'-0"
- YERGE RAFTERS - 3 PCS. 1"x6"x16'-0"
- CROSS TIES - 68 PCS. 2"x4"x18'-0"
- CENTER TIES - 17 PCS. 2"x6"x10'-0"
- COLLARS - 34 PCS. 1"x6"x8'-0"
- KNEE BRACES - 16 PCS. 2"x4"x10'-0"
- RIDGE BOARD - 8 PCS. 1"x8"x12'-0"
- SHEATHING - 2550 LINEAR FEET OF 1"x4" BOARDS
- ROOFING - 23 TO 24 SQUARES
- RIDGE ROLL - 76 LINEAR FEET

HAY HOOD

- RAFTERS - 3 PCS. 2"x6"x10'-0"
- RIDGEBOARD - 1 PC. 2"x10"x12'-0"
- HANGERS - 2 PCS. 2"x4"x10'-0"
- SCABS - 1 PC. 1"x8"x8'-0"
- TENSION RODS - 2, 1/2" DIA. x 8'-0" LONG, THREADED BOTH ENDS

MISCELLANEOUS

- 102, 7/8" BOLTS WITH NUTS
- 204, 7/8" WASHERS
- 20d NAILS
- HAY TRACK WITH BRACKETS, HANGERS, ETC.

FOR EACH ADDITIONAL 10'-0" SECTION

SIDES

- POLES - 2, 25'-0" LONG
- NAILING GIRTS - 12 PCS. 2"x6"x10'-0"
- LATERAL BRACES - 4 PCS. 2"x4"x8'-0"
- SIDING - TO COVER 320 SQUARE FEET
- PLATES - 2 PCS. 2"x6"x10'-0"
- PLATE GIRDERS - 2 PCS. 2"x10"x10'-0"

ROOF

- RAFTERS - 10 PCS. 2"x6"x16'-0"
- CROSS TIES - 10 PCS. 2"x4"x18'-0"
- CENTER TIES - 5 PCS. 2"x6"x5'-0"
- COLLARS - 5 PCS. 1"x6"x8'-0"
- KNEE BRACES - 2 PCS. 2"x4"x10'-0"
- RIDGEBOARD - 1 PC. 1"x8"x10'-0"
- SHEATHING - 350 LINEAR FEET OF 1"x4" BOARDS
- ROOFING - 3 1/2 SQUARES

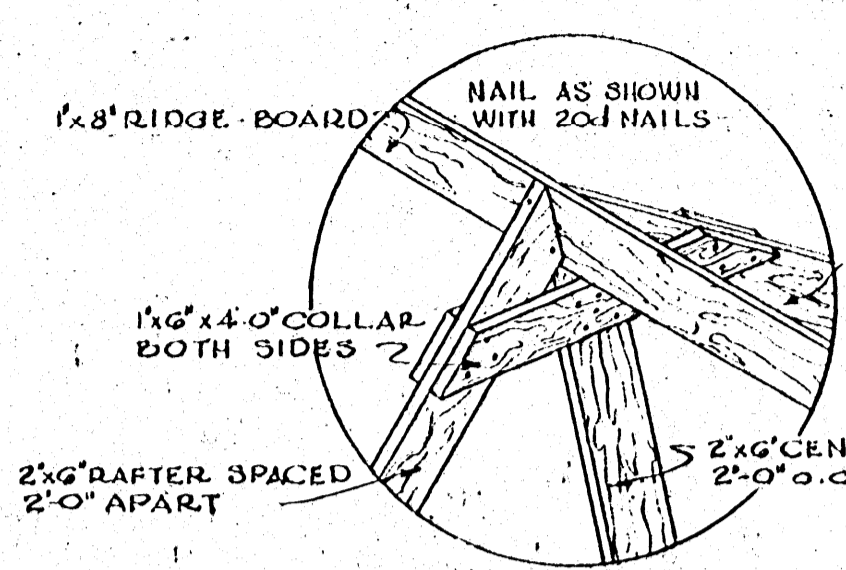
MISCELLANEOUS

- 15, 7/8" BOLTS WITH NUTS
- 30, 7/8" WASHERS
- 20d NAILS
- HAY TRACK WITH BRACKETS, HANGERS, ETC.

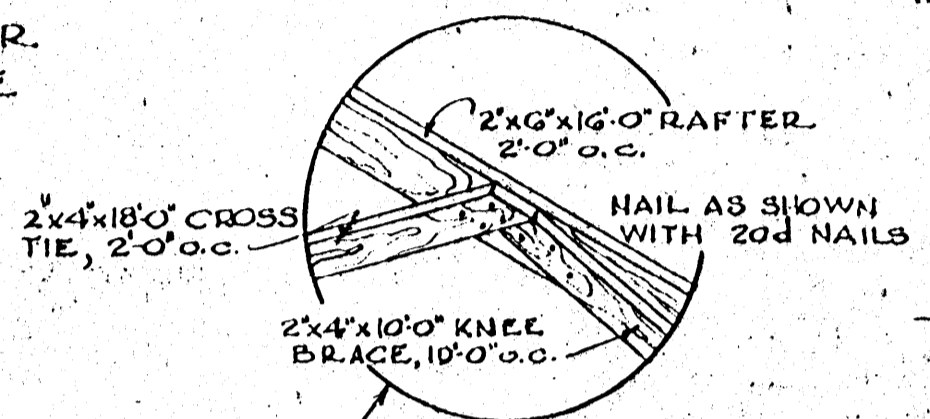
COOPERATIVE EXTENSION WORK IN
AGRICULTURE AND HOME ECONOMICS
STATE OF MISSISSIPPI
MISSISSIPPI STATE UNIVERSITY
AND
UNITED STATES DEPARTMENT OF AGRICULTURE COOPERATING

HAY STORAGE BARN

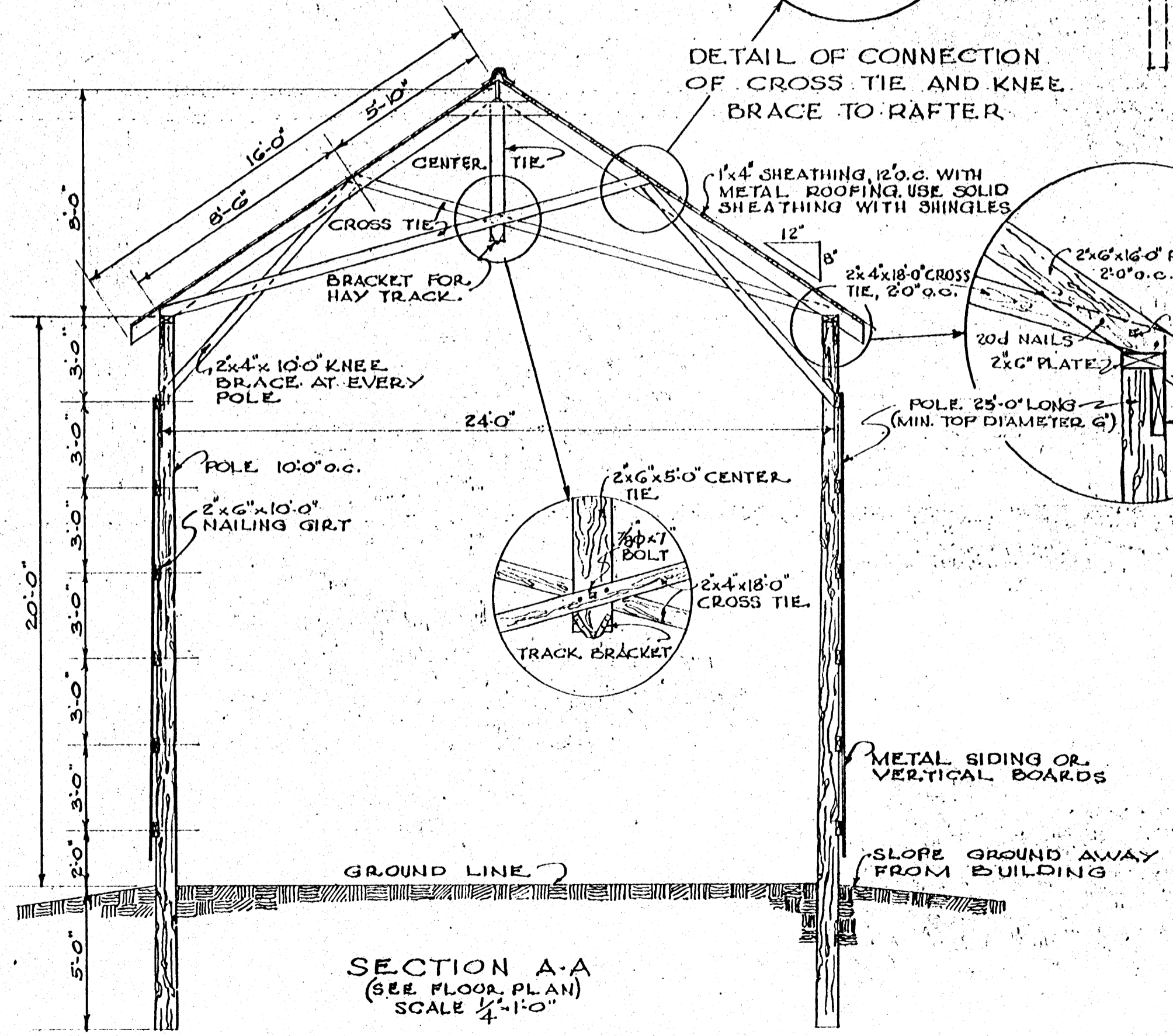
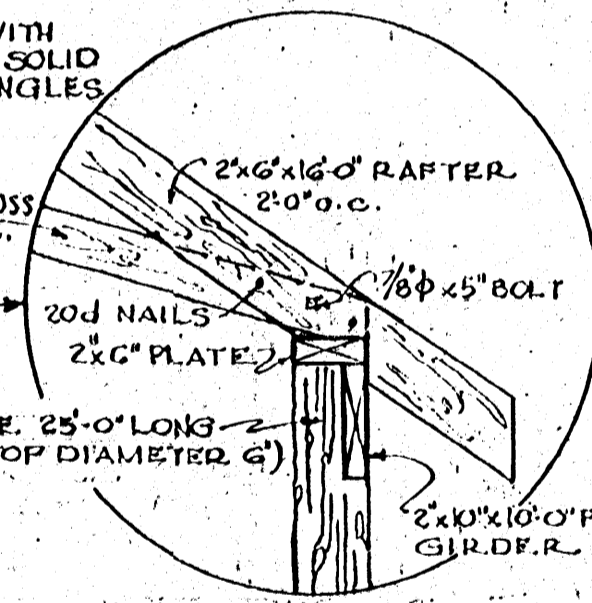
VA. '49 EX. 5775 SHEET 1 OF 2



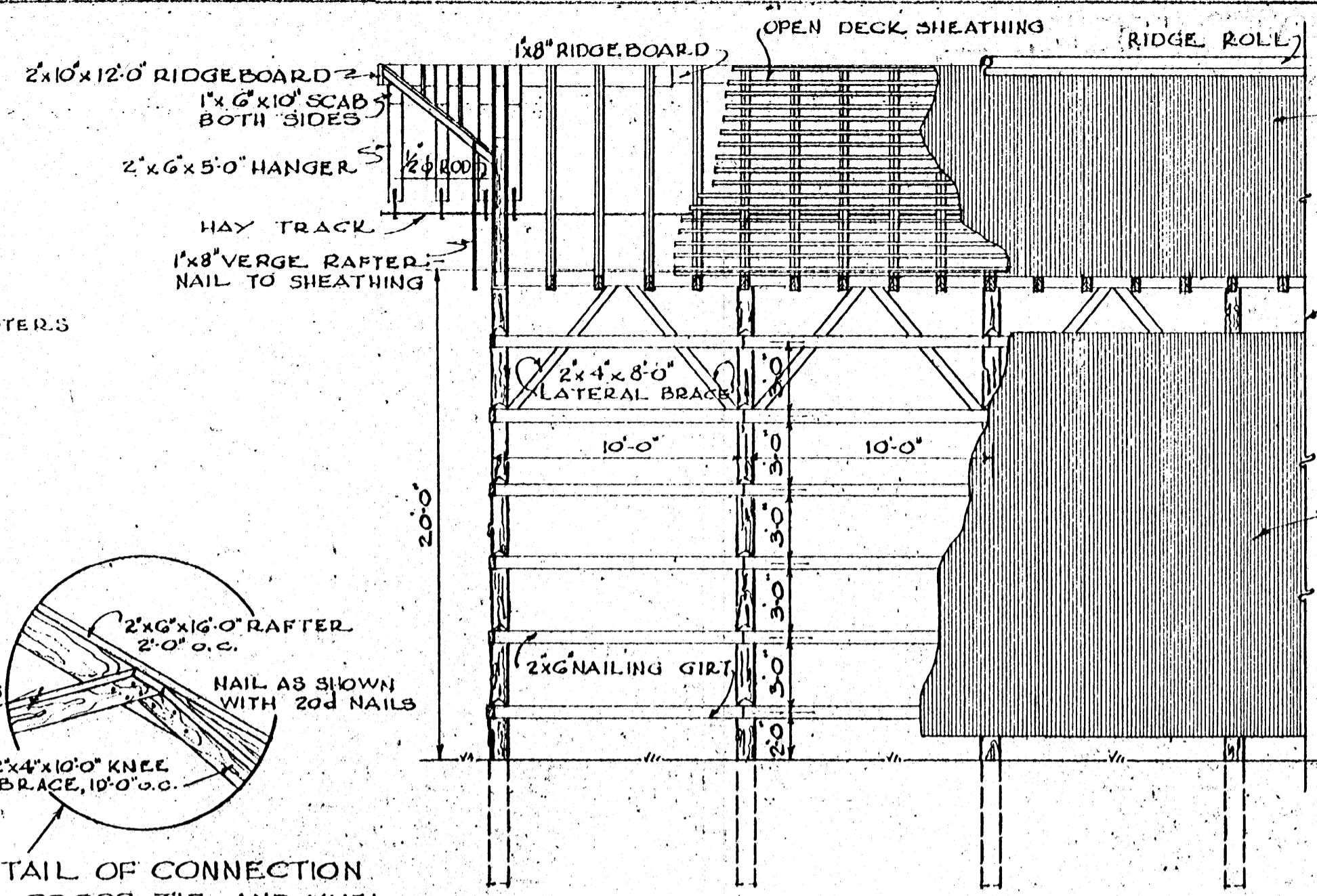
DETAIL OF RAFTER FRAMING AT RIDGE



DETAIL OF CONNECTION OF CROSS TIE AND KNEE BRACE TO RAFTER



SECTION A-A (SEE FLOOR PLAN) SCALE 1/4" = 1'-0"

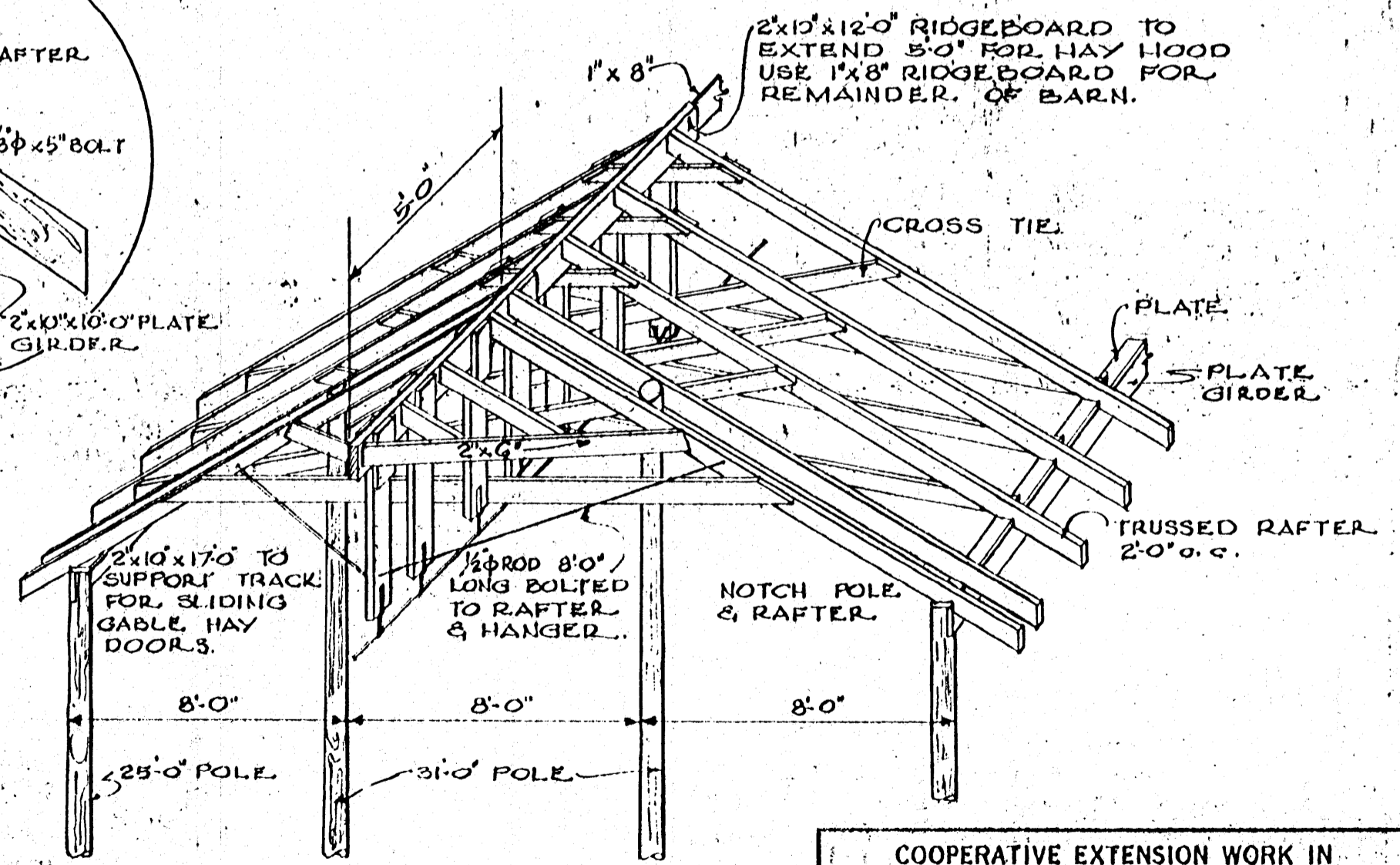


DETAIL OF SIDE FRAMING SCALE 3/16" = 1'-0"

METAL ROOFING
NOTE: USE SOLID SHEATHING IF OTHER ROOFING IS USED.

INDICATES THAT ENTIRE LENGTH OF BUILDING IS NOT SHOWN.

METAL OR VERTICAL BOARD SIDING.



DETAIL OF END FRAMING (SHOWS HAY HOOD CONSTRUCTION) SCALE 1/4" = 1'-0"

COOPERATIVE EXTENSION WORK IN AGRICULTURE AND HOME ECONOMICS
STATE OF MISSISSIPPI
MISSISSIPPI STATE UNIVERSITY
AND
UNITED STATES DEPARTMENT OF AGRICULTURE COOPERATING

HAY STORAGE BARN