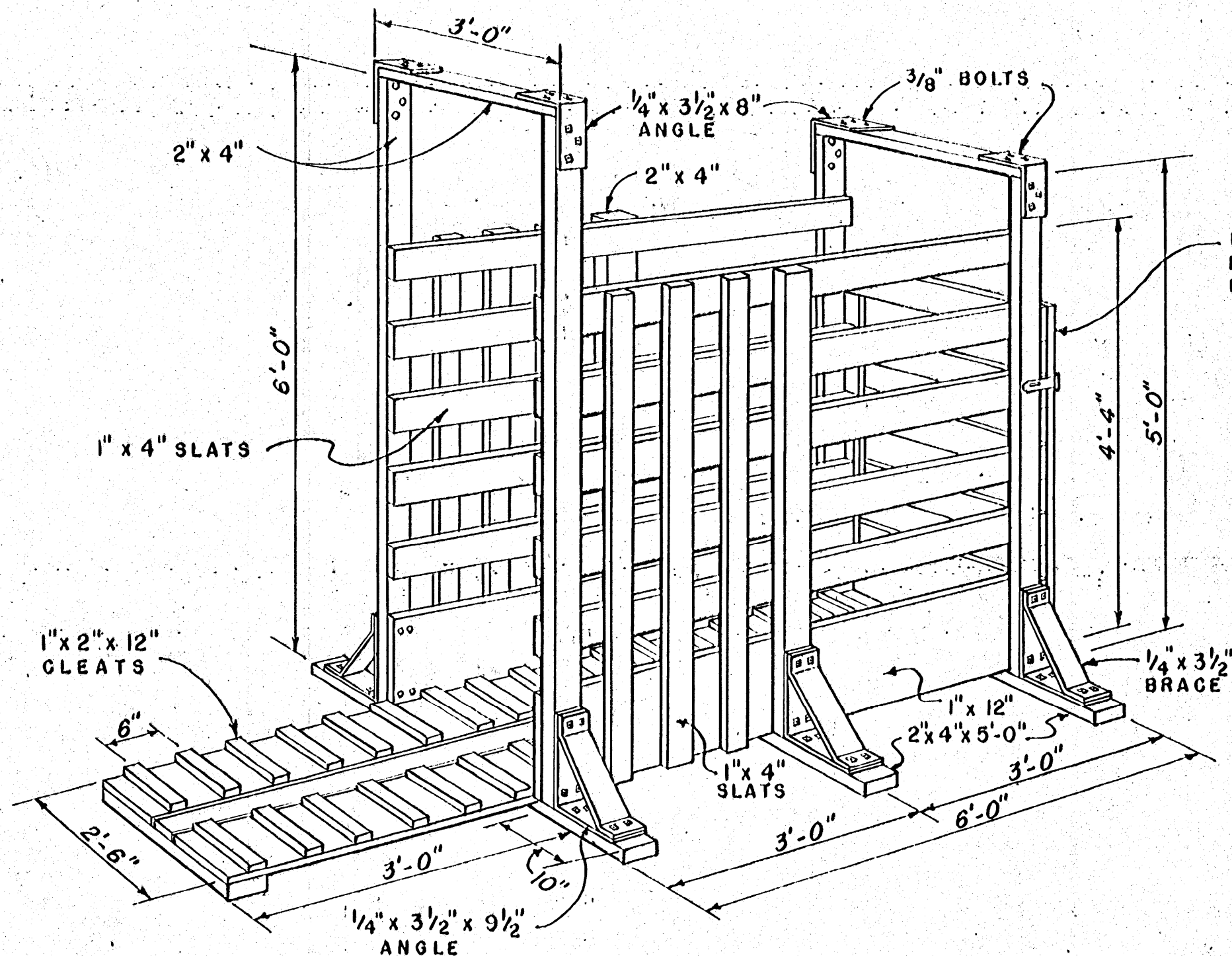


BILL OF MATERIALS FOR CRATE AND EXIT GATE ONLY.

LUMBER			
QUANTITY	SIZE		USE
1	2" x 4" x 10'-0"		BASE
1	2" x 4" x 8'-0"		BASE
1	2" x 4" x 12'-0"		POST
2	2" x 4" x 10'-0"		POST
1	2" x 4" x 6'-0"		TIES
1	1" x 12" x 16'-0"		SIDES & GATE
2	1" x 12" x 10'-0"		FLOOR
1	1" x 6" x 10'-0"		FLOOR
2	1" x 4" x 14'-0"		SLATS (VERT.)
6	1" x 4" x 12'-0"		SLATS (HORIZ.)
1	1" x 4" x 12'-0"		GATE BATTENS
1	1" x 2" x 14'-0"		CLEATS
2	1" x 2" x 10'-0"		CLEATS
2	2" x 6" x 10'-0"		(FOOTBOARDS)
MISCELLANEOUS			
24	3/8" x 3 1/2"	BOLTS, NUTS & ETC.	
48	3/8" x 2 1/2"	BOLTS, NUTS & ETC.	
6	ANGLES 1/4" x 3 1/2" - 9 1/2"	LEGS	
6	BRACES 1/4" x 3 1/2" - 14"	BENT ENDS	
4	ANGLES 1/4" x 2 1/2" - 8"	LEGS	
1	PAIR 8" T	HINGES	
1	HASP AND STAPLE		
3	LBS.	6d COMMON NAILS	



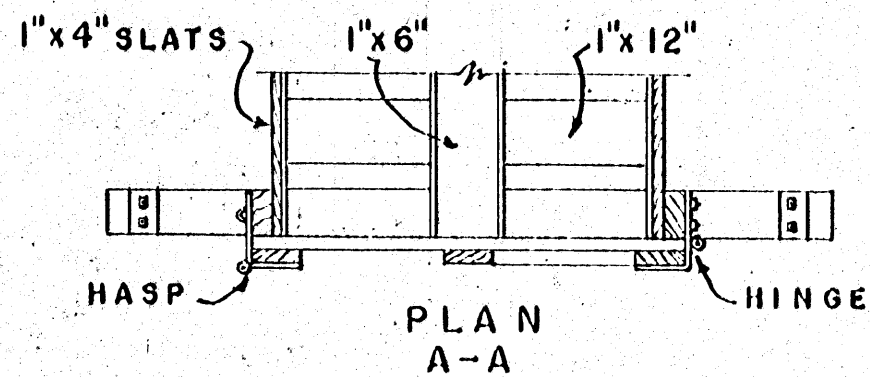
EXIT GATE OR HEADGATE AS DESIRED.

USE OF BREEDING CRATE

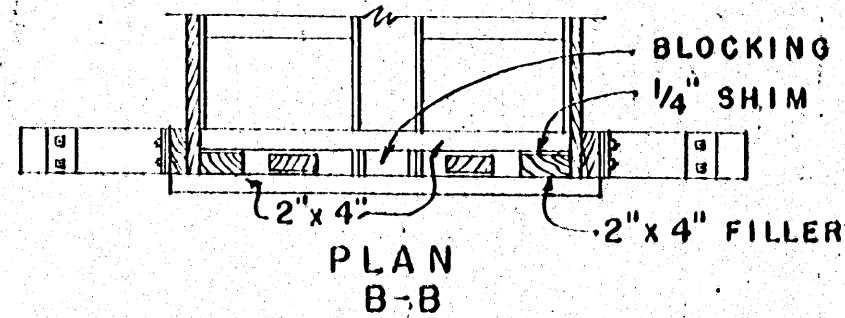
SUPPORT BOAR ON TWO 2" x 6" FOOTBOARDS WITH FRONT ENDS RESTING ON CLEATED GATE AND REAR ENDS ON CLEATED FLOOR, ADJUST HEIGHT TO SUIT; THEN INSERT A 2" x 4" BAR THRU SLATS AND UNDER 2" x 6" FOOTBOARDS.

CAUTION SHOULD BE USED TO PREVENT CRACKING ANIMALS JAW WITH HEADGATE.

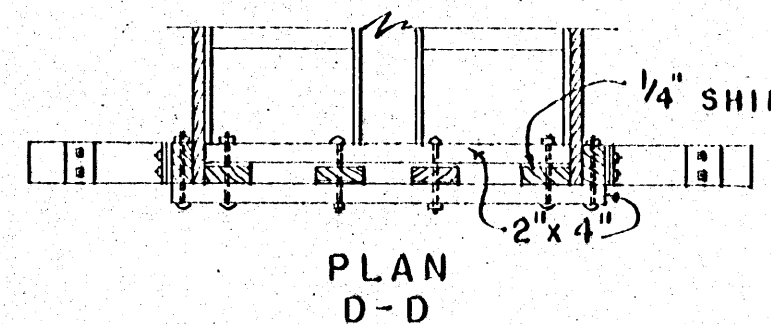
PERSPECTIVE



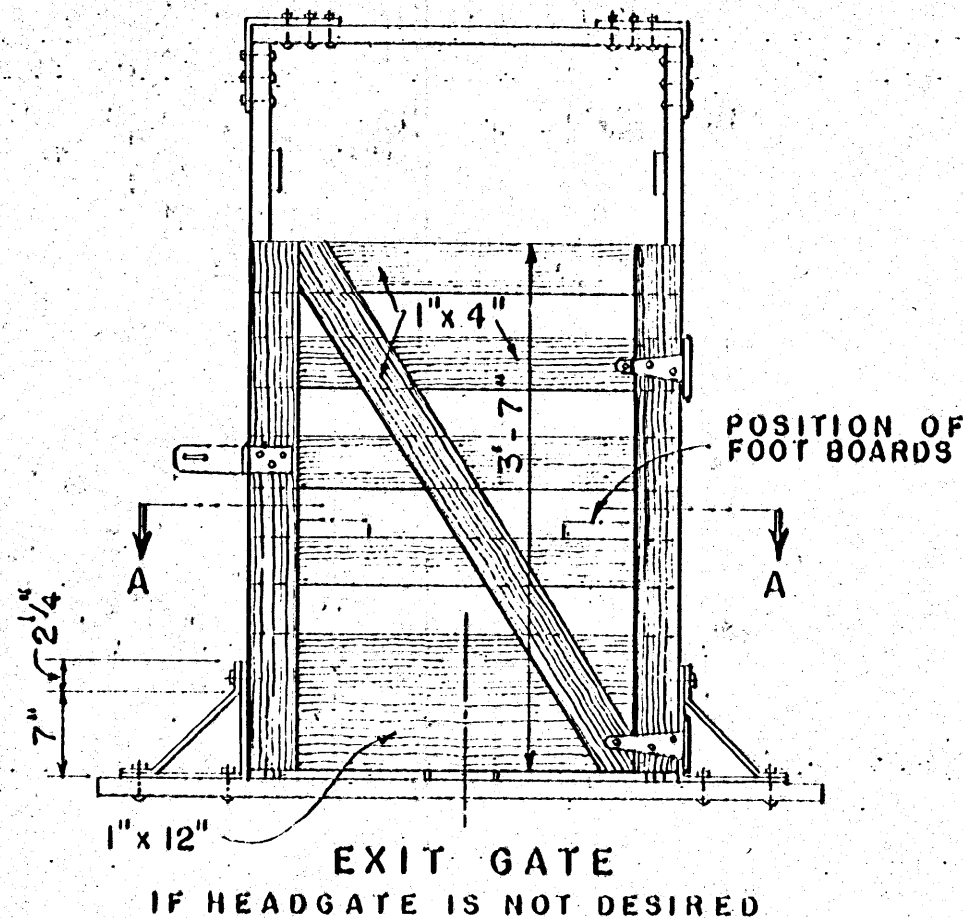
PLAN A-A



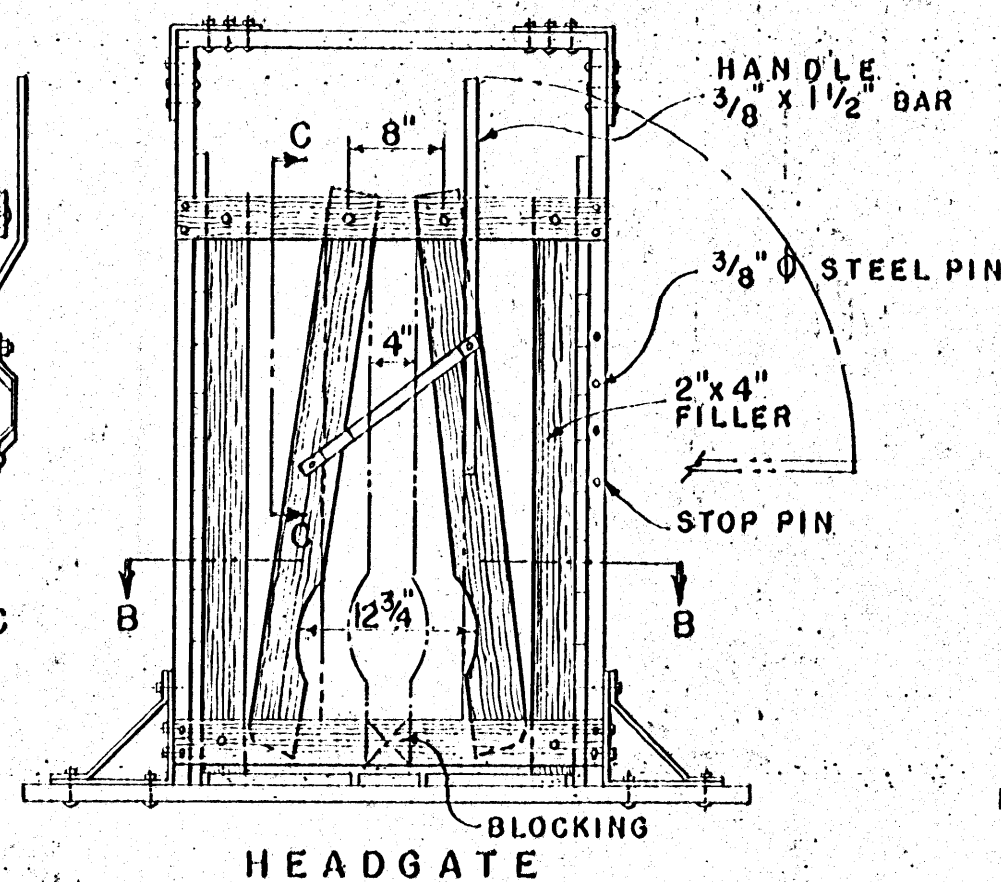
PLAN B-B



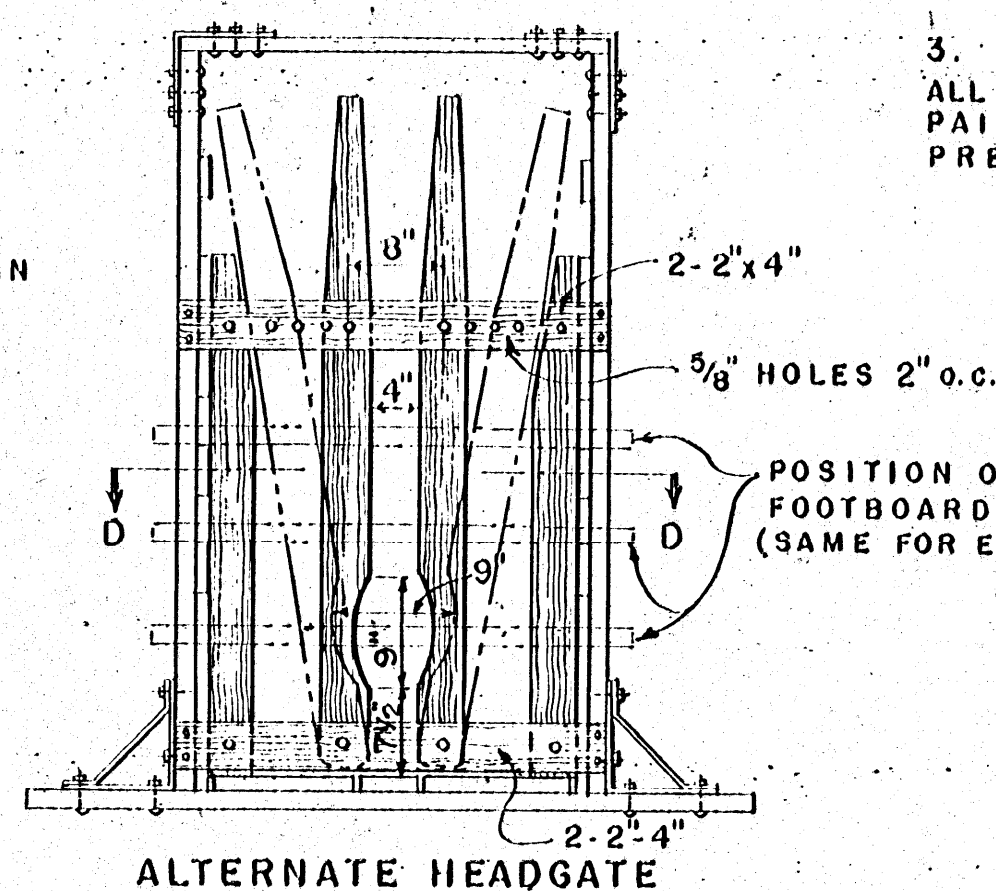
PLAN D-D



EXIT GATE
IF HEADGATE IS NOT DESIRED



HEADGATE



ALTERNATE HEADGATE

GATE DETAILS
SCALE 3/4" = 1'-0"

NOTE:

- USE CARriage BOLTS WHEREVER PRACTICABLE. ROUNDED HEAD SIDE TOWARDS ANIMAL TO PREVENT INJURY.
- ALL LUMBER IN CONTACT WITH EARTH SHOULD BE PRESSURE TREATED WITH CREOSOTE OR SIMILAR PRESERVATIVE. ALL OTHER LUMBER TO BE PAINTED WITH WOOD PRESERVATIVE.
- ALL METAL TO BE GALVANIZED OR PAINTED WITH A METAL PRESERVATIVE.

COOPERATIVE EXTENSION WORK IN
AGRICULTURE AND HOME ECONOMICS
STATE OF MISSISSIPPI
MISSISSIPPI STATE UNIVERSITY.
AND
UNITED STATES DEPARTMENT OF AGRICULTURE COOPERATING

BREEDING CRATE
FOR HOGS

USDA '54 EX. 5783 SHEET 1 OF 1