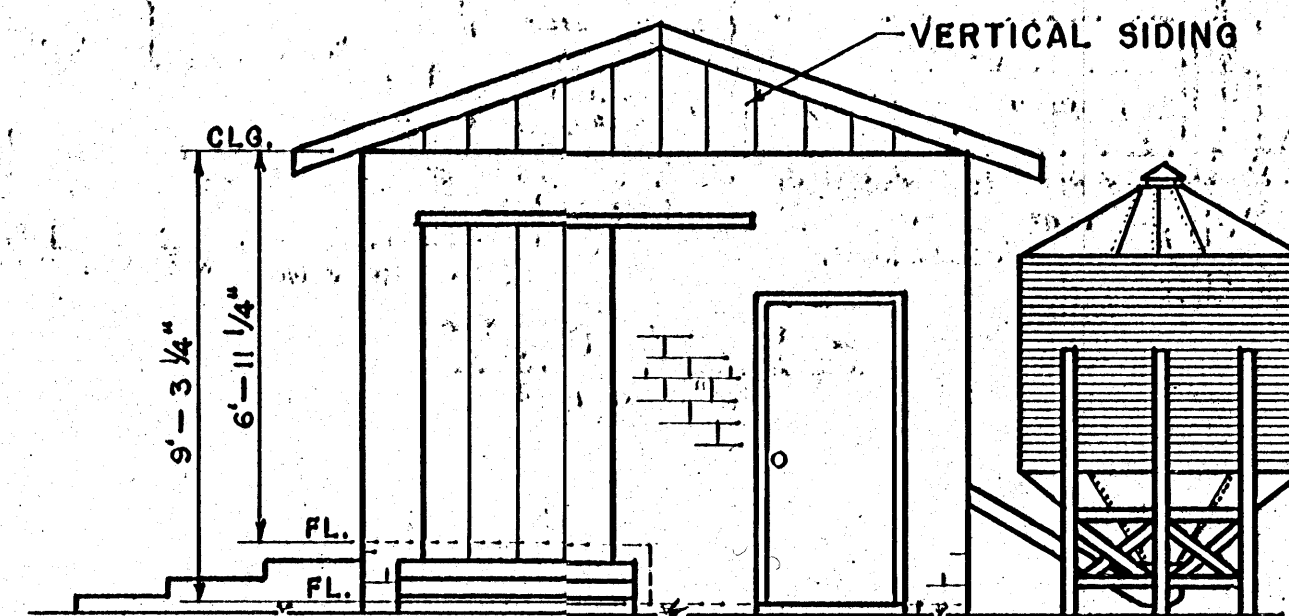


**ELECTRICAL SYMBOLS:**

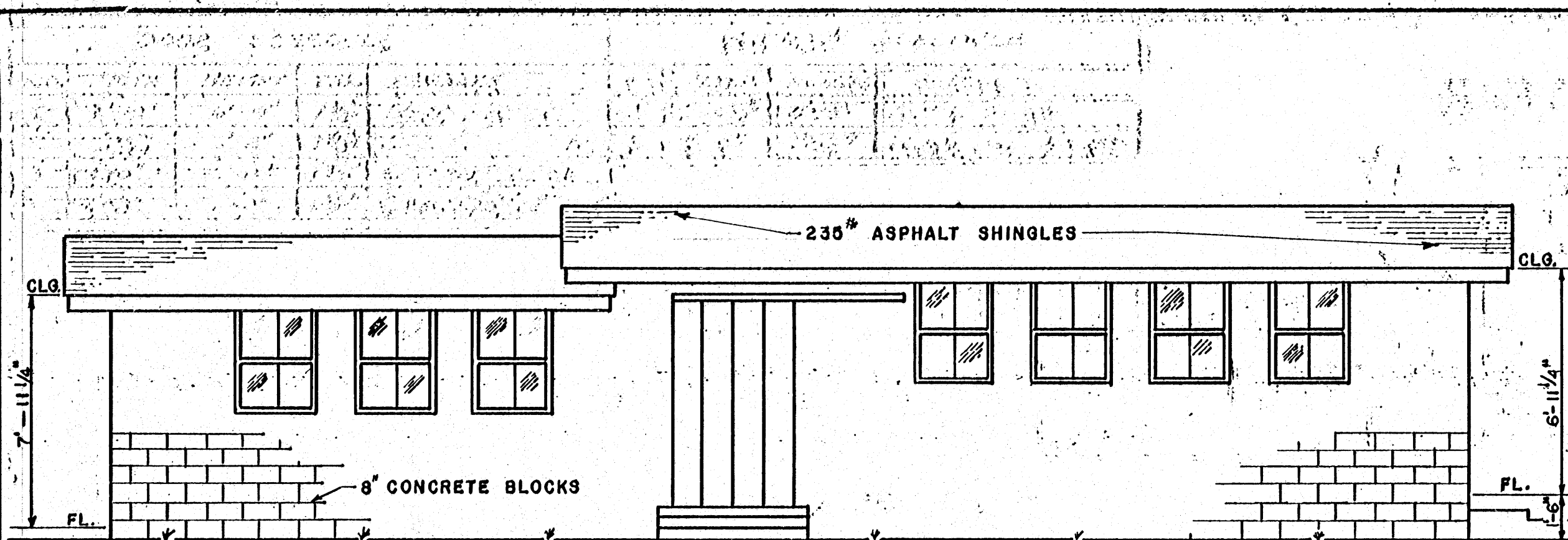
- S SWITCH
- CEILING OUTLET
- A SPOTLIGHT TO ILLUMINATE BULK MILK TANK OPENINGS  
NO FIXTURES TO BE MOUNTED DIRECTLY ABOVE  
OPENINGS OF BULK TANK.
- B 250 WATT INFRARED LAMPS
- ⊕ DOUBLE CONVENIENCE OUTLET GROUNDED.
- ⊕ VP MILKER VACUUM PUMP, 230 VOLT, 3P, WATERPROOF, 3N  
FUSED SWITCH.
- ⊕ B BULK MILK TANK, 230 VOLT, 3P, 3N FUSED SWITCH.
- ⊕ TT TANK TRUCK 230 VOLT
- ⊕ WH WATER HEATER, 230 VOLT, 3P, 3N FUSED SWITCH.
- ⊕ HTR HEATER

**GENERAL NOTES:**

1. CARRY FOUNDATION TO SOLID GROUND BELOW FROST.
2. FILL BLOCK CORES UNDER ENDS OF LINTELS WITH CEMENT MORTAR.
3. CONCRETE FLOORS USED BY CATTLE TO HAVE WOOD TROWEL FINISH.
4. PAINT EXTERIOR SURFACE OF BLOCK WALL WITH TWO COATS OF CEMENT PAINT ABOVE FINISH GRADE. PARGE WITH 1/2" CEMENT-MORTAR BELOW FINISH GRADE.
5. DRAINS TO MEET LOCAL CONDITIONS.

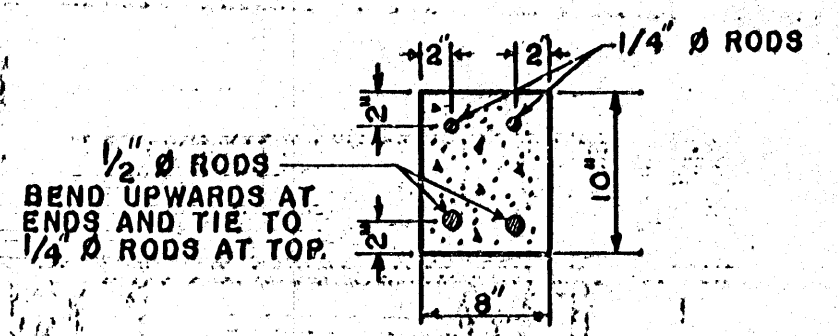


THREE STALL MILKING PLANT FOR MANUFACTURING MILK		
COOPERATIVE EXTENSION SERVICE STATE OF MISSISSIPPI MISSISSIPPI STATE UNIVERSITY AND UNITED STATES DEPARTMENT OF AGRICULTURE COOPERATING		
DRAWN BY: R.E.R.	CHECKED BY: L.M.	
DATE: 1970	DWG. NO. 5875-A	SHT. 1 of 2

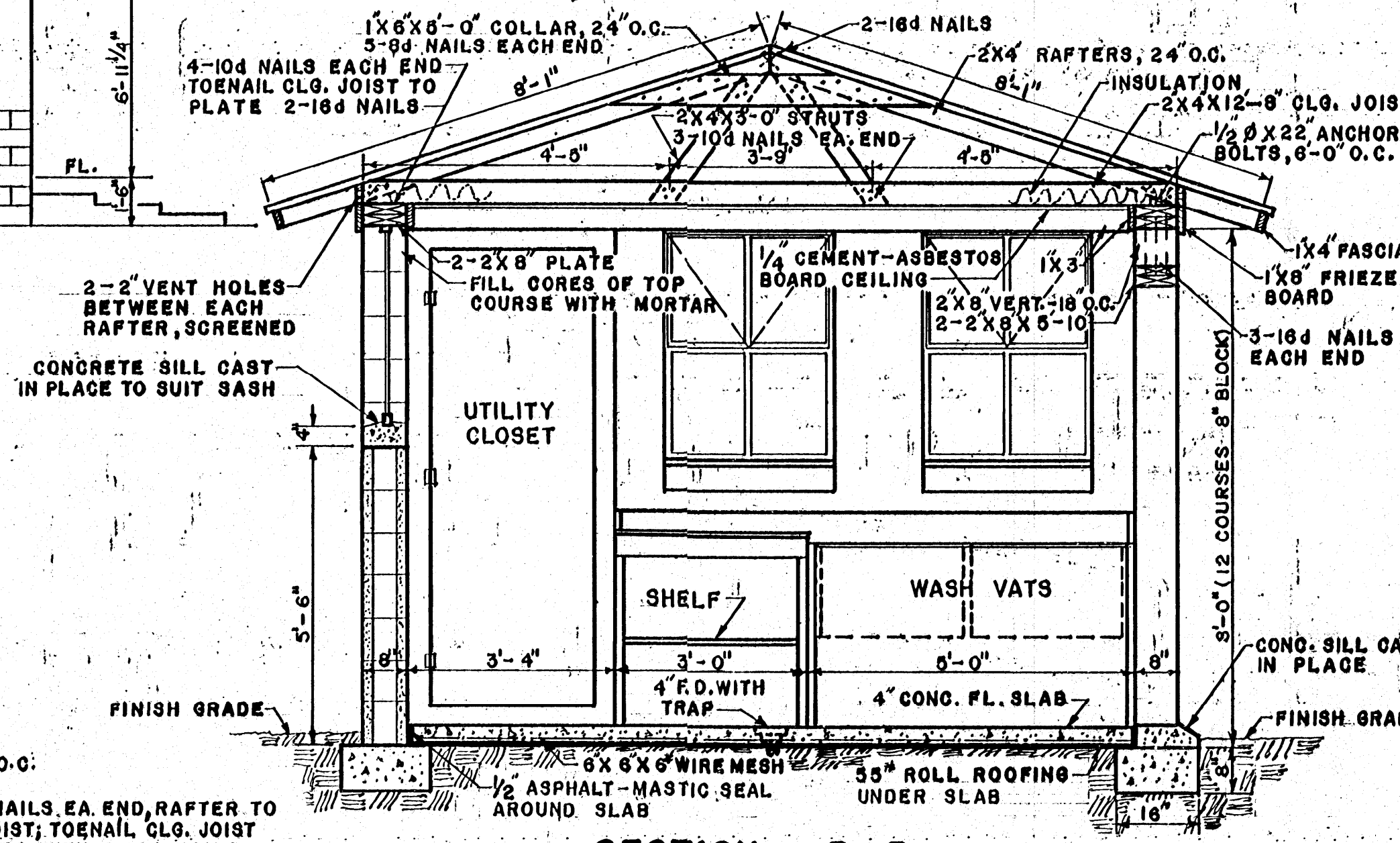


**REAR ELEVATION**  
SCALE: 1/4" = 1'-0"

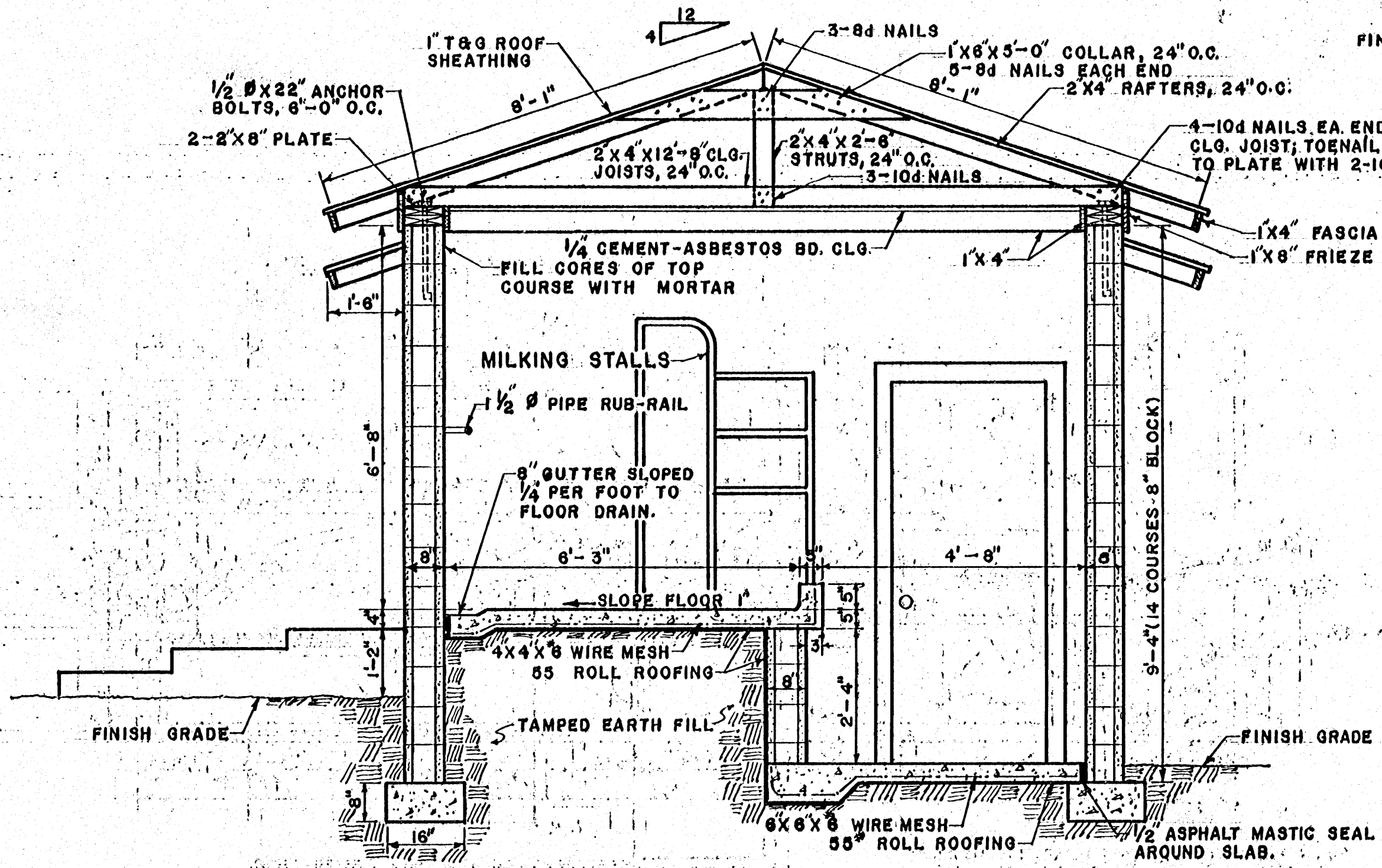
WINDOW SCHEDULE				DOOR SCHEDULE				
NO.	WIDTH	HEIGHT	REMARKS	NO.	WIDTH	HEIGHT	THK.	REMARKS
A	2'-8"	3'-6"	ALU. UTILITY SASH	1	3'-0"	6'-8"	1 3/8"	WOOD, GLAZED
	2'-8"	6'-8"		2	2'-8"	6'-8"	1 3/8"	2 REQ'D.-WOOD
	4'-0"	7'-0"		3	4'-0"	7'-0"	-	T & G DOOR
	2'-10"	6'-8"		4	2'-10"	6'-8"	1 3/8"	WOOD



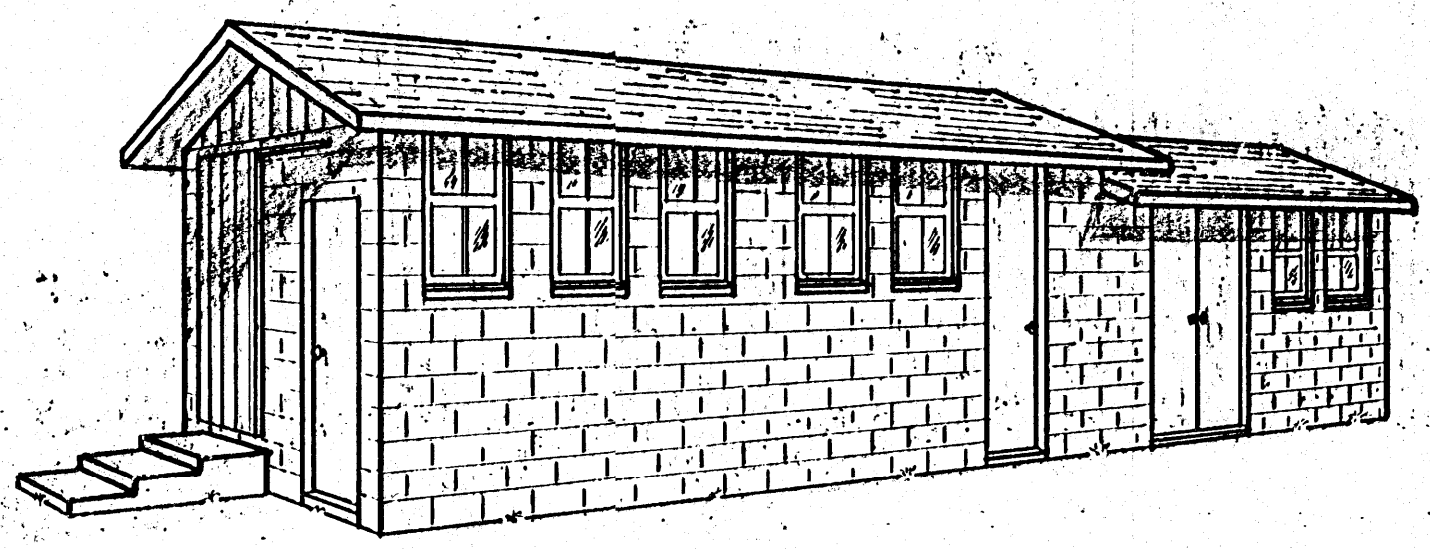
**DOOR LINTEL ALT. METHOD**



**SECTION B-B**  
SCALE: 1/2" = 1'-0"



**SECTION A-A**  
SCALE: 1/2" = 1'-0"



**PERSPECTIVE**

THREE STALL MILKING PLANT  
FOR MANUFACTURING MILK

COOPERATIVE EXTENSION SERVICE  
STATE OF MISSISSIPPI  
MISSISSIPPI STATE UNIVERSITY  
AND  
UNITED STATES DEPARTMENT OF AGRICULTURE COOPERATING

DRAWN BY: R.E.R. CHECKED BY: L.M.

DATE: 1970 DWG. NO: 5875-A SHT. 2 of 2