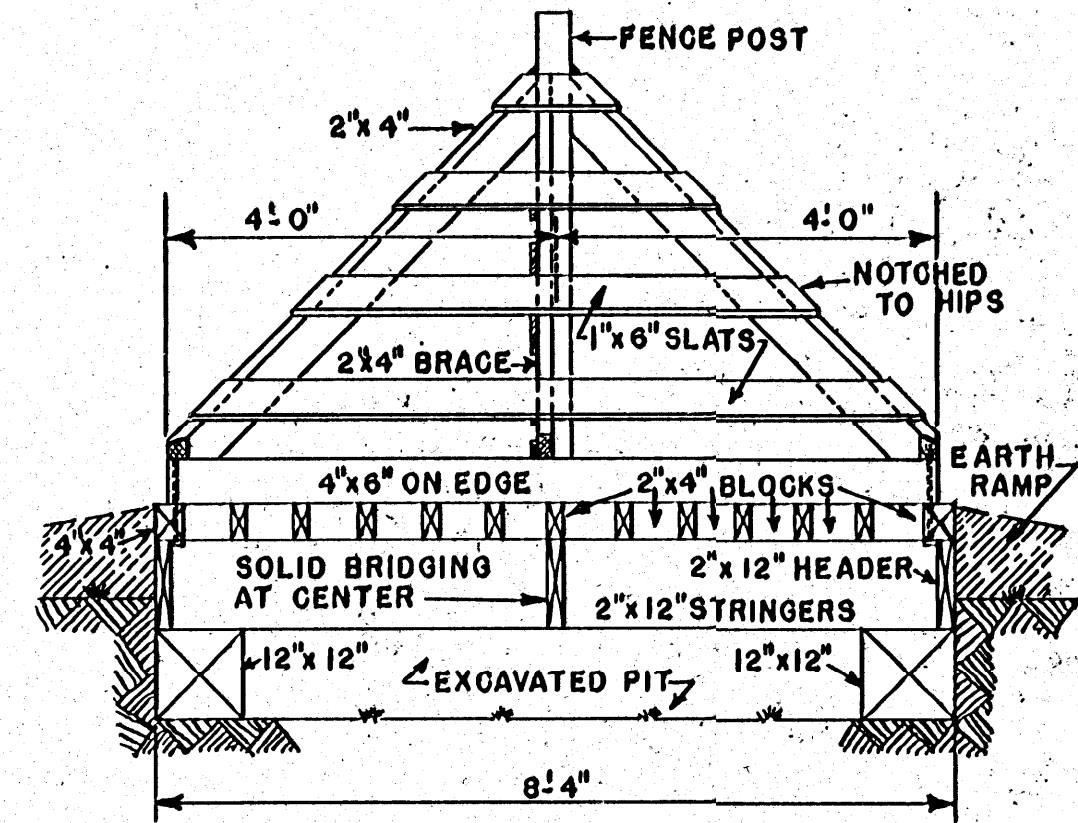


SECTION A-A



SECTION B-B

SECTION A-A, SHOWS GUARD FLOOR BUILT LEVEL WITH GRADE
SECTION B-B, SHOWS GUARD FLOOR RAISED ABOVE GRADE

BILL OF MATERIALS

LUMBER

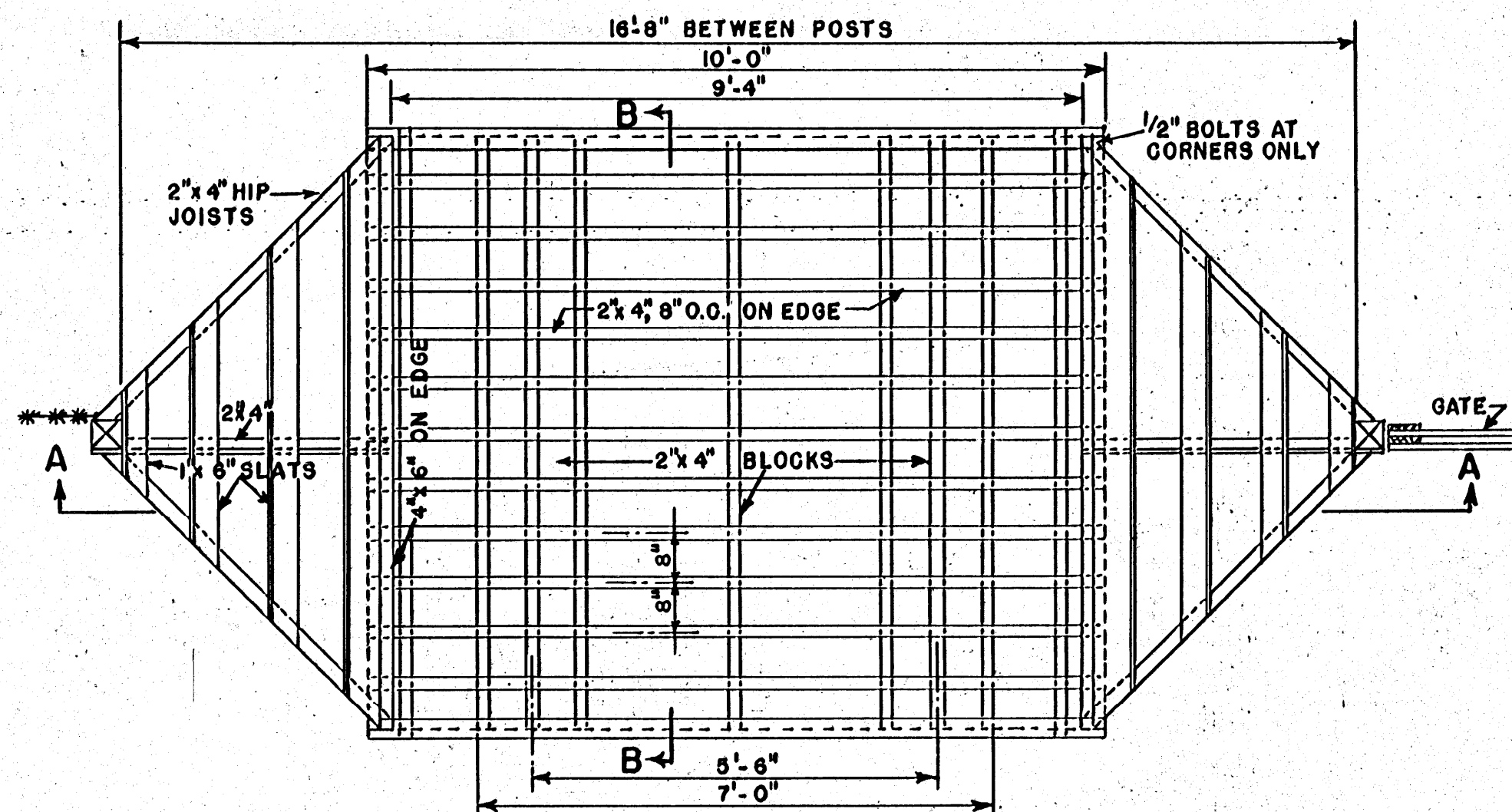
FENCE POST:	2-PCS	4" x 4" x 7'-0"
FRAMING:	2-PCS	12" x 12" x 9'-0"
	2-PCS	4" x 4" x 10'-0"
	3-PCS	2" x 12" x 10'-0"
	9-PCS	2" x 12" x 8'-0"
	11-PCS	2" x 4" x 10'-0"
	3-PCS	2" x 4" x 8'-0"
	6-PCS	2" x 4" x 6'-0"
SLATS:	9-PCS	1" x 6" x 8'-0"
GUARD RAILS:	2-PCS	4" x 6" x 8'-0"

MISCELLANEOUS

ANCHOR BOLTS: 4- 1/2" x 12" GALV.

NOTE:
TIMBERS IN CONTACT WITH EARTH ARE TO BE
PRESSURE-TREATED WITH PRESERVATIVE

SCALE: 1/2" = 1'-0"



PLAN

COOPERATIVE EXTENSION WORK IN AGRICULTURE AND HOME ECONOMICS STATE OF MISSISSIPPI MISSISSIPPI STATE UNIVERSITY AND UNITED STATES DEPARTMENT OF AGRICULTURE COOPERATING		
CATTLE GUARD WOOD CONSTRUCTION		
USDA '60	EX. 5903	SHEET 1 OF 1