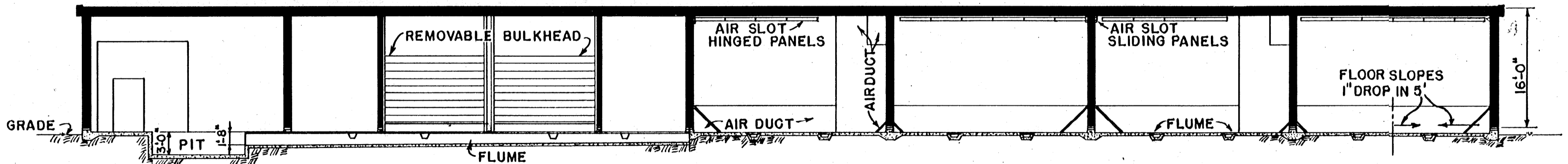


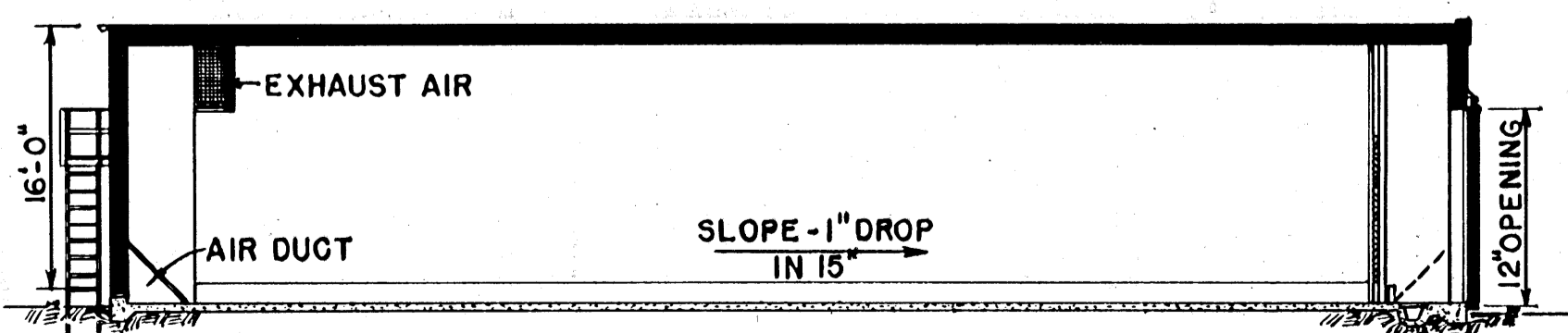
NOTE: WASHER (WATER PRESSURE 40-60 PSI) DRAIN BACK TO PIT.

FLOOR PLAN

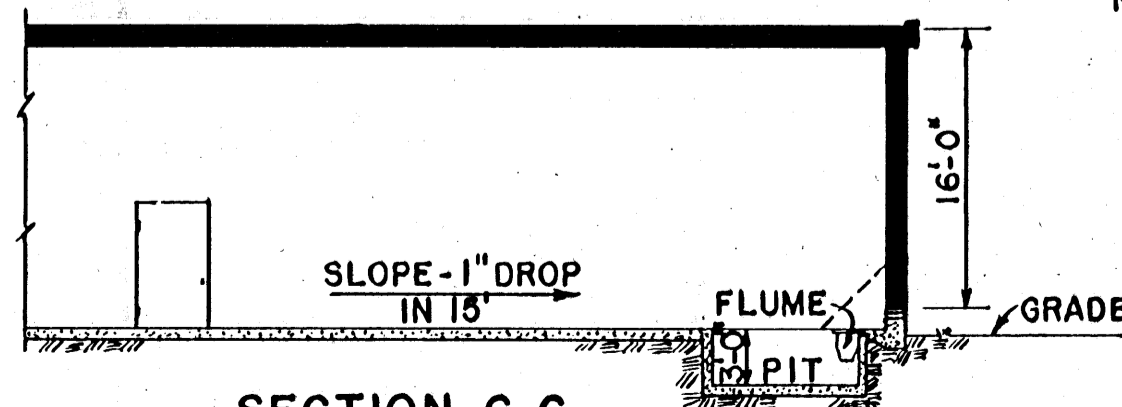
NOTE: ALL EXTERIOR STORAGE WALLS FULLY VENTED.



SECTION A-A



SECTION B-B



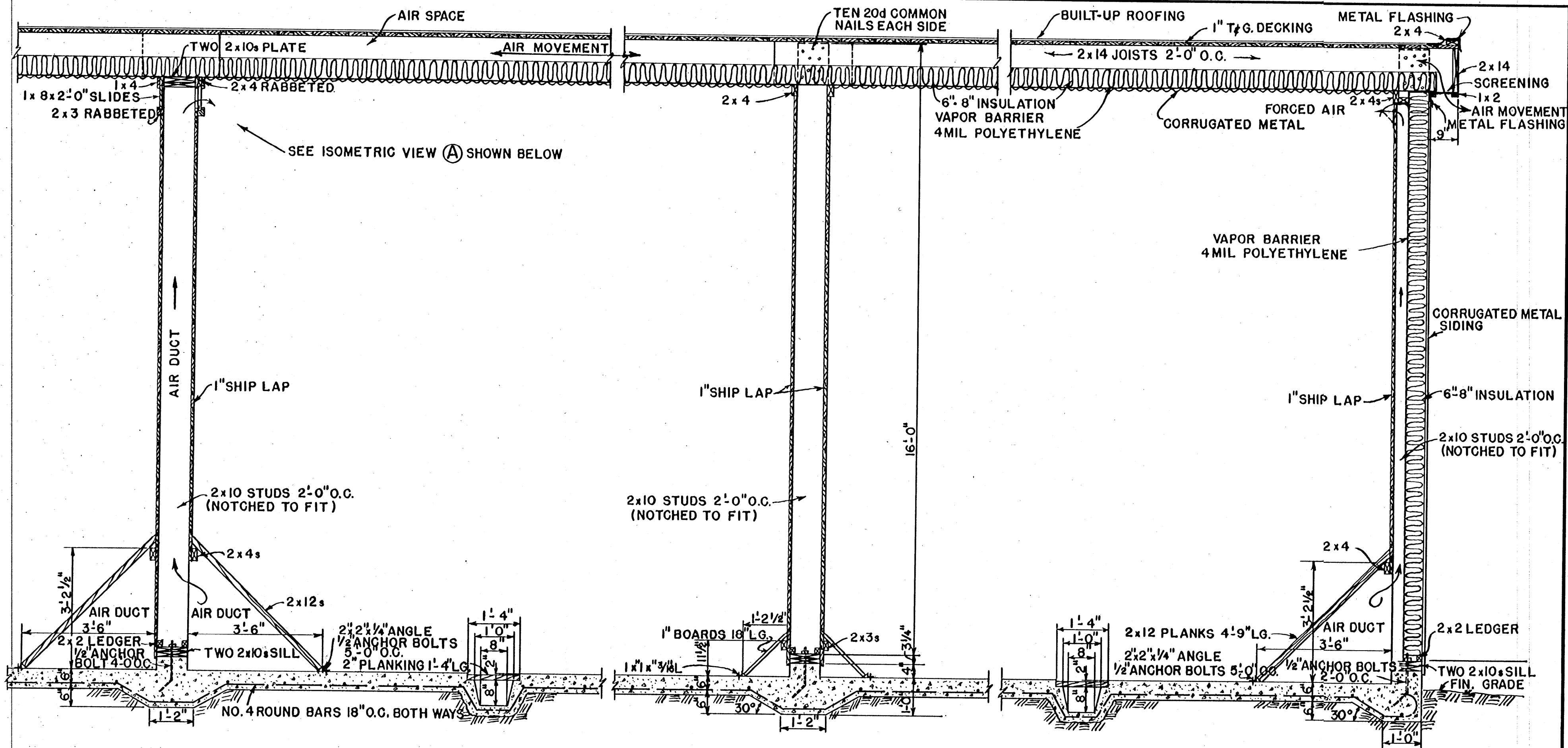
SECTION C-C

NOTE: SCALE 3/32" = 1'-0" UNLESS OTHERWISE NOTED

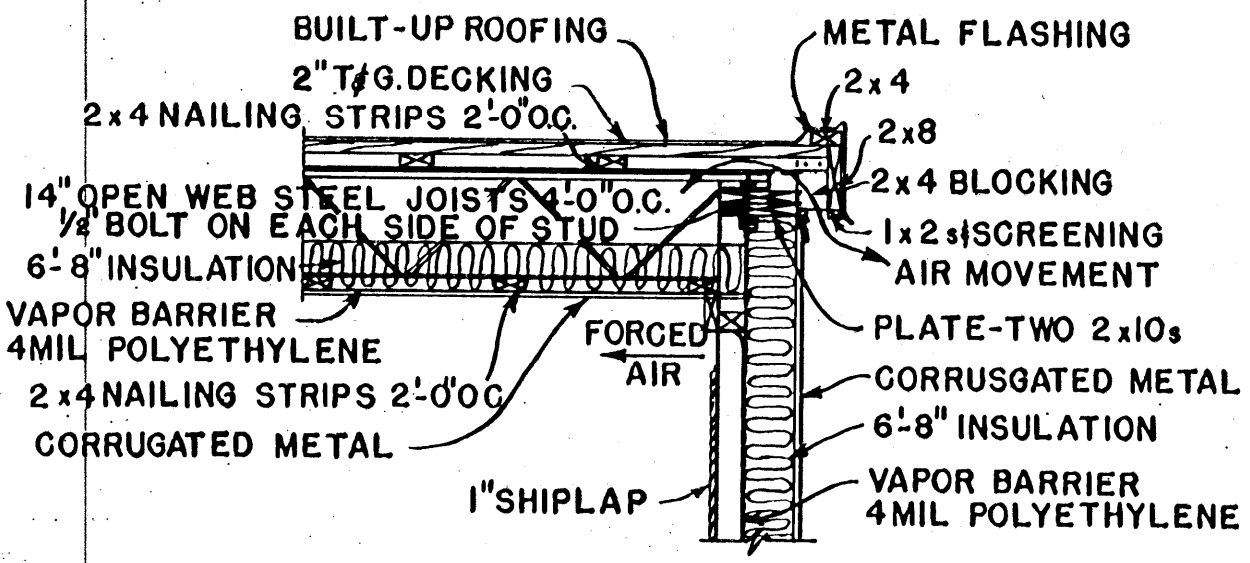
COOPERATIVE EXTENSION WORK IN  
 AGRICULTURE AND HOME ECONOMICS  
 STATE OF MISSISSIPPI  
 MISSISSIPPI STATE UNIVERSITY  
 AND  
 UNITED STATES DEPARTMENT OF AGRICULTURE COOPERATING

60,000 CWT. POTATO WAREHOUSE

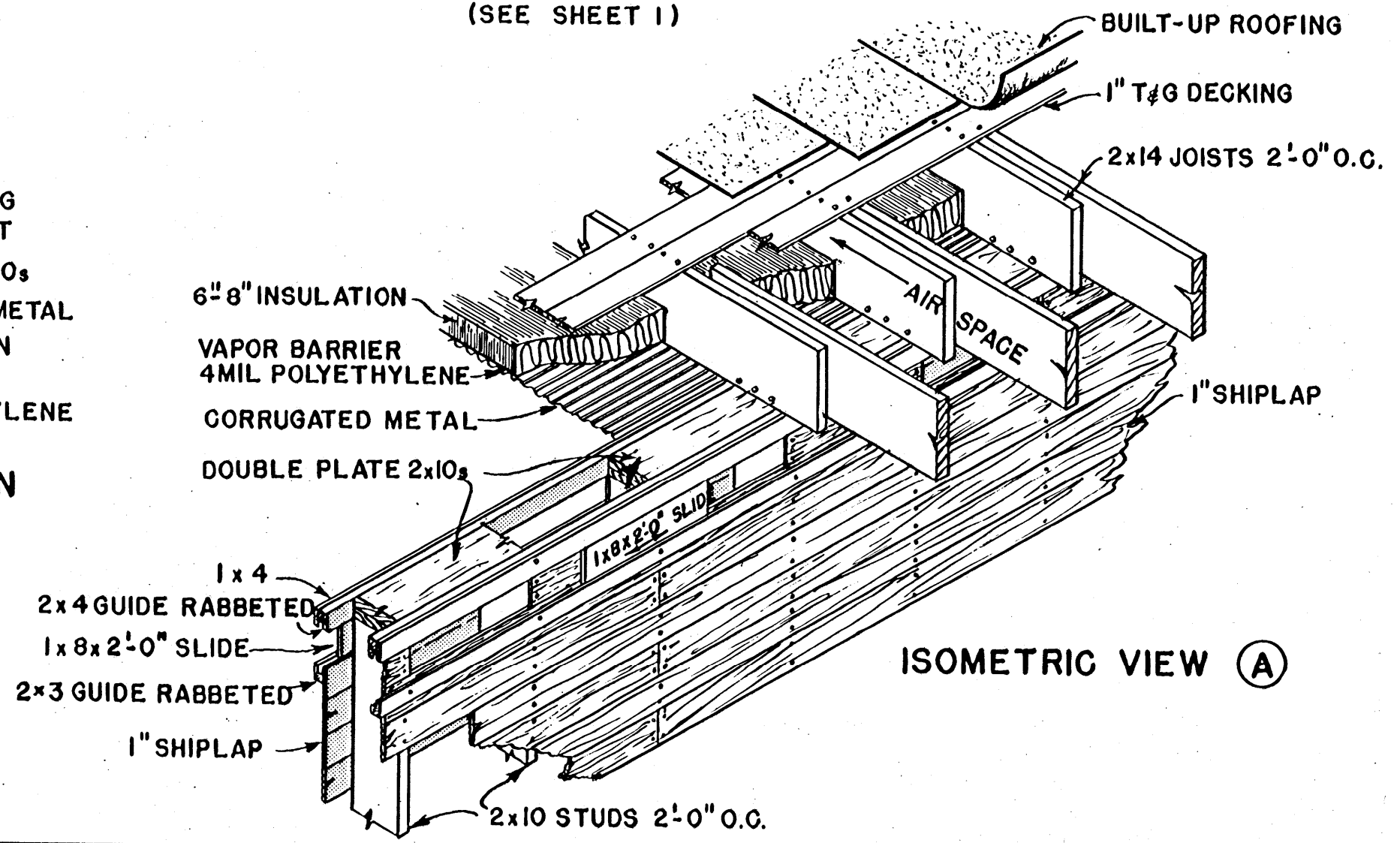
N.D. USDA '61 EX. 5927 SHEET 1 OF 5



SECTION D-D  
(SEE SHEET 1)



ALTERNATE ROOF AND WALL CONSTRUCTION



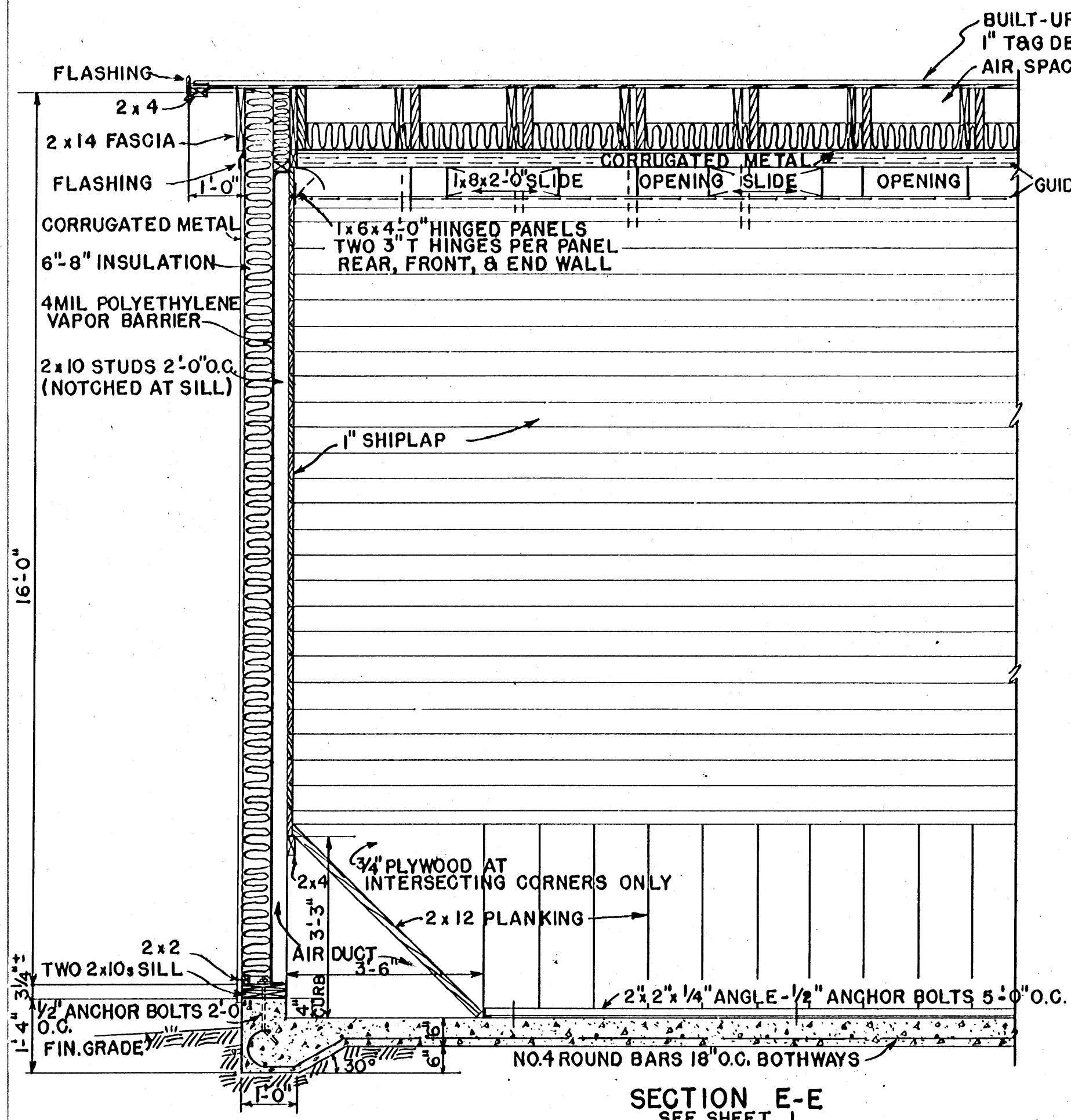
ISOMETRIC VIEW (A)

NOTE: SCALE 1/2" = 1'-0" UNLESS OTHERWISE NOTED

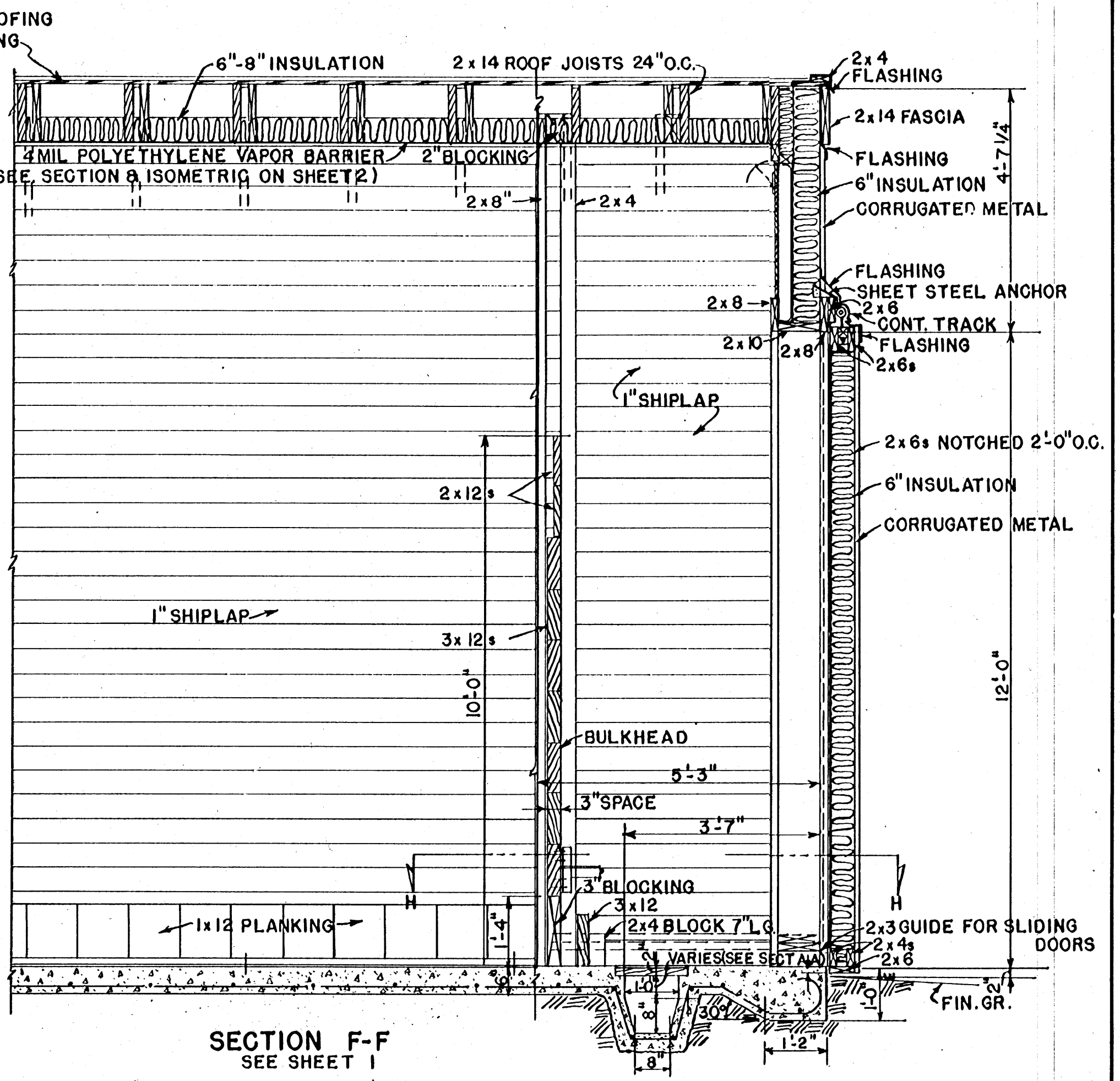
COOPERATIVE EXTENSION WORK IN  
AGRICULTURE AND HOME ECONOMICS  
STATE OF MISSISSIPPI  
MISSISSIPPI STATE UNIVERSITY  
AND  
UNITED STATES DEPARTMENT OF AGRICULTURE COOPERATING

**60,000 CWT. POTATO WAREHOUSE**

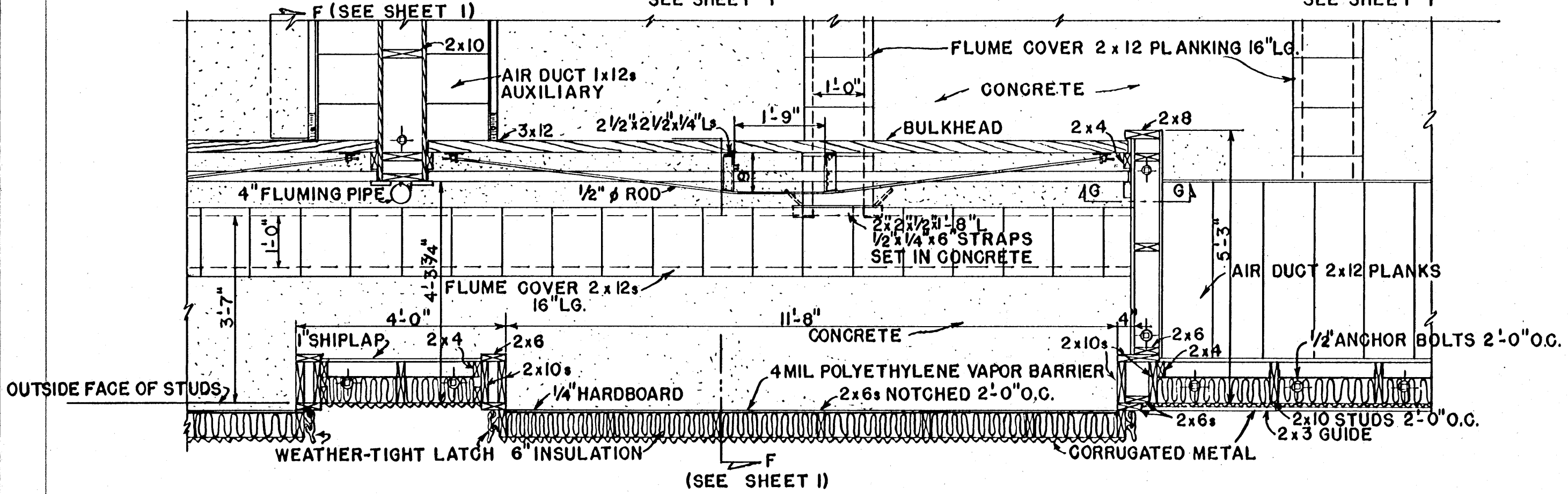
N.D.#USDA 61 EX. 5927 SHEET 2 OF 5



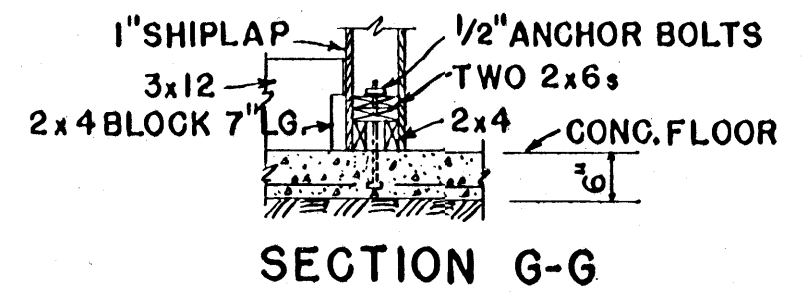
SECTION E-E  
SEE SHEET 1



SECTION F-F  
SEE SHEET 1



SECTION H-H  
(SEE SHEET 1)



SECTION G-G

NOTE: SCALE 1/2"=1'-0" UNLESS OTHERWISE NOTED

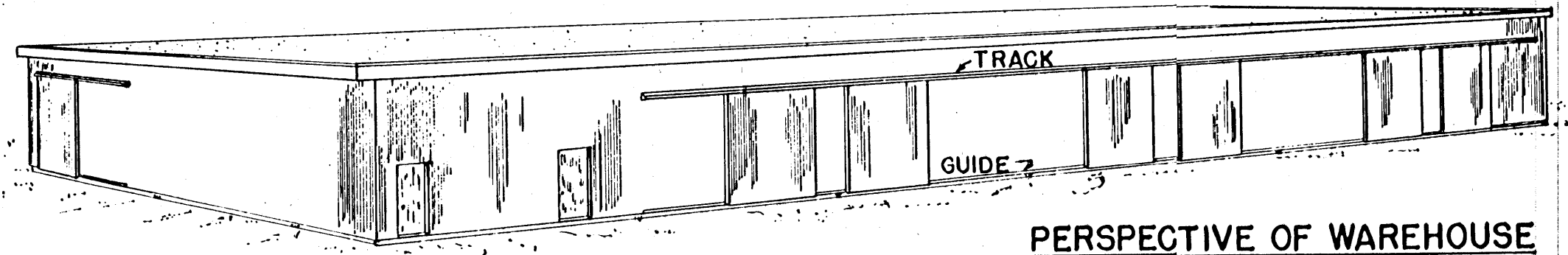
COOPERATIVE EXTENSION WORK IN  
AGRICULTURE AND HOME ECONOMICS  
STATE OF MISSISSIPPI  
MISSISSIPPI STATE UNIVERSITY  
AND  
UNITED STATES DEPARTMENT OF AGRICULTURE COOPERATING

60,000 CWT. POTATO WAREHOUSE

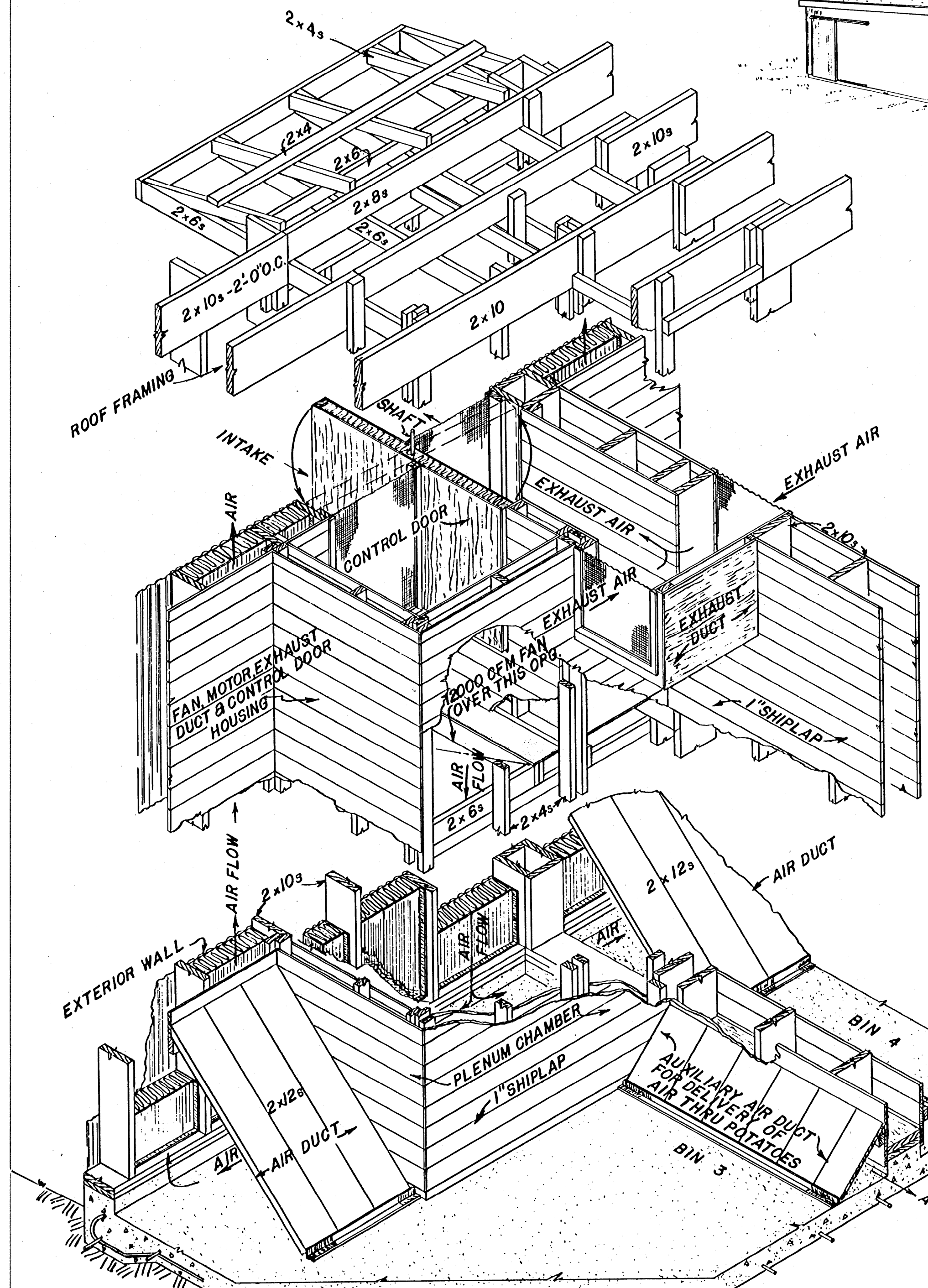
NO. 4 USDA '61 EX. 5927 SHEET 3 OF 5

NOTE: CONCRETE CURBING TO BE ONE ESTABLISHED LEVEL THRU-OUT.

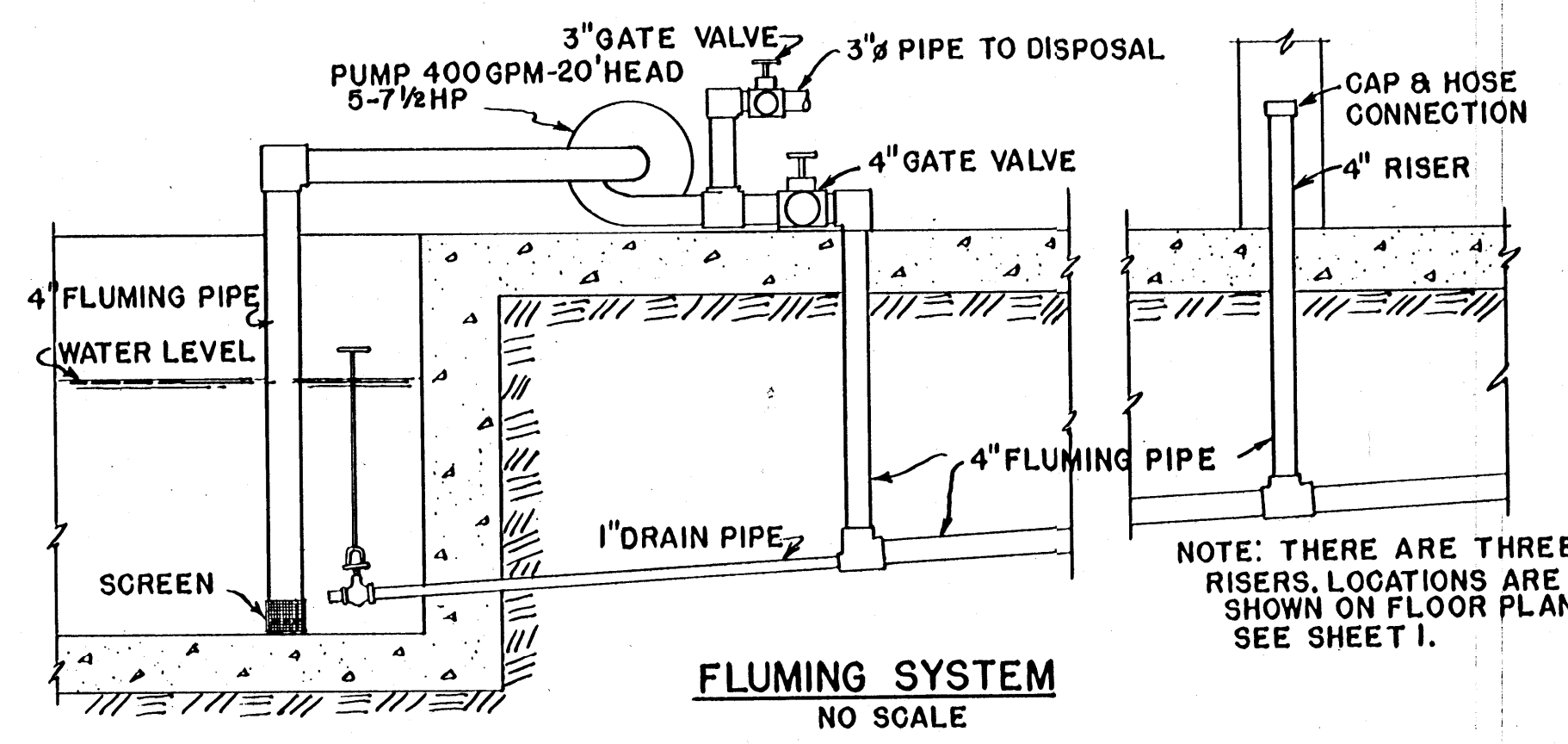




PERSPECTIVE OF WAREHOUSE

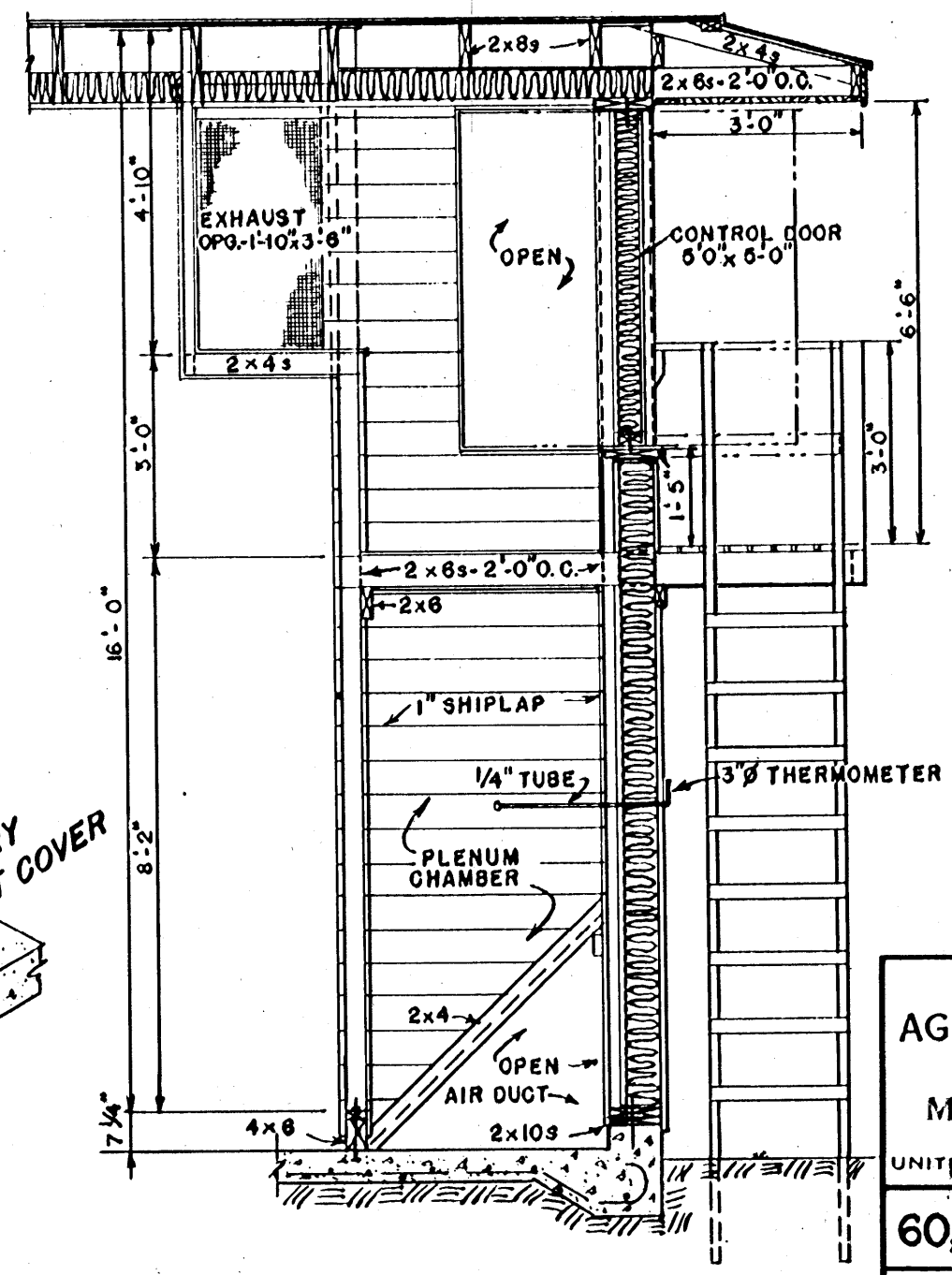


ISOMETRIC VIEW OF VENTILATION SYSTEM



FLUMING SYSTEM  
NO SCALE

NOTE: THERE ARE THREE RISERS. LOCATIONS ARE SHOWN ON FLOOR PLAN SEE SHEET 1.

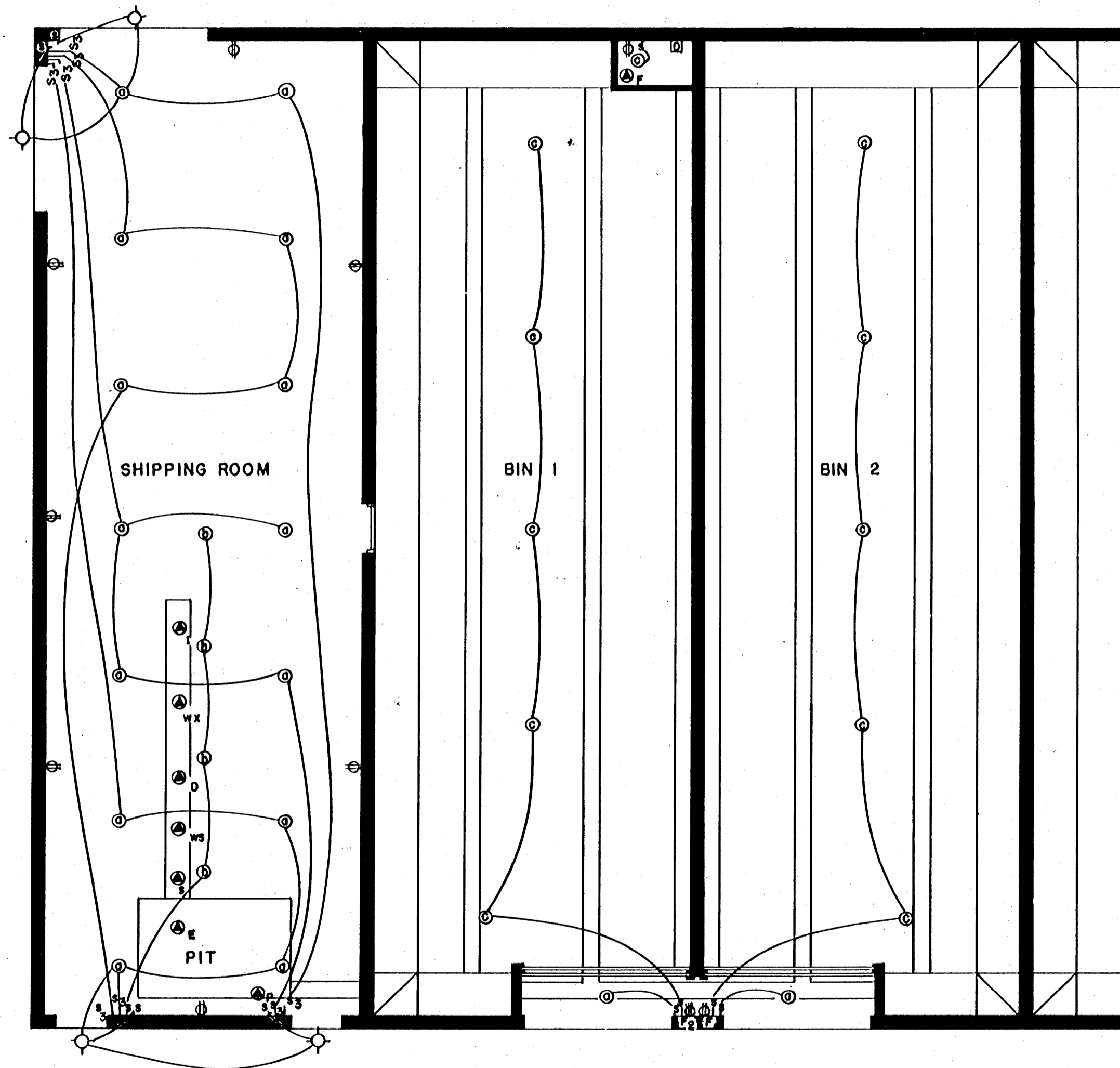


SECTION J-J (SEE SHEET 1)  
SCALE: 3/8" = 1'-0"

COOPERATIVE EXTENSION WORK IN  
AGRICULTURE AND HOME ECONOMICS  
STATE OF MISSISSIPPI  
MISSISSIPPI STATE UNIVERSITY  
AND  
UNITED STATES DEPARTMENT OF AGRICULTURE COOPERATING

**60,000 CWT. POTATO WAREHOUSE**

NO. # USDA '61 EX. 5927 SHEET 4 OF 5



**ELECTRICAL LAYOUT**  
SCALE: 1/8"=1'-0"

NOTES: DISTRIBUTION CENTER LOCATION WILL DEPEND ON SITE.  
NO SUPPLY CIRCUITS SHOWN.  
LAYOUT SHOWN (BINS 1 AND 2) TO BE REPEATED IN BINS 3, 4, 5, AND 6.  
EQUIP BUILDING WITH AN ADEQUATE LIGHTNING PROTECTION SYSTEM IN AREAS WHERE NEEDED.

**SERVICE ENTRANCE FACILITIES**

REQUIREMENTS WILL DEPEND UPON EQUIPMENT SELECTED AND POWER DISTRIBUTION FACILITIES IN THE VICINITY. THREE-PHASE SERVICE IS HIGHLY DESIRABLE, WHERE AVAILABLE. CONSULTATION WITH COMPETENT ELECTRICAL WIRING ADVISOR WILL BE ESSENTIAL IN DESIGNING FINAL SYSTEM.

**MINIMUM 3φ 208V. OR 1φ 230V. CIRCUIT REQUIREMENTS:**

1. PUMP FOR FLUME
2. SUB-MAIN FOR VENTILATING FANS
3. PORTABLE CONVEYORS FOR FILLING BINS
4. }
5. } DISTRIBUTIONS FOR PROCESSING MACHINERY
6. }

**MINIMUM 1φ 115V. CIRCUIT REQUIREMENTS:**

- 6-20 AMP. CIRCUITS-SHIPPING ROOM
- 3-20 AMP. CIRCUITS-STORAGE BINS AND FAN ROOMS
- 1- SPARE
- 10- MINIMUM TOTAL

PROBABLE SERVICE ENTRANCE SIZE: 200AMP. 3φ 208V. OR 400 AMP. 1φ 230 V. TO PROVIDE FOR FUTURE EXPANSION.

**LEGEND**

- S SINGLE SWITCH
  - S<sub>3</sub> THREE-WAY SWITCH
  - ⊙ CEILING LIGHTING R-40-115° REFLECTOR LAMPS, 500 WATT.
  - ⊙ SPECIAL LIGHTING FOR PROCESSING AND SORTING-PROBABLY R-40-35° SPOTS 300 WATT, ARRANGEMENT TO BE DETERMINED BY EQUIPMENT CHOSEN.
  - ⊙ VAPOR-PROOF CEILING FIXTURES, 100 WATT.
  - ⊙ BRACKET LAMP HOLDERS-OUTDOOR FLOOD.
  - ⊙ DUPLEX CONVENIENCE OUTLETS, GROUNDING TYPE, 110V.
  - ⊙ PUMP FOR FLUME 5-7½ HP 3φ 208V. OR 1φ 230V., FUSED SWITCH.
  - ⊙ VENTILATING FAN 3 HP 3φ 208V. OR 1φ 230V., FUSED SWITCH.
  - ⊙ F<sub>2</sub> TWO SINGLE CONVENIENCE OUTLETS FOR CONNECTING TWO 1HP PORTABLE CONVEYORS, GROUNDING-TYPE 1φ 208V. OR 230V. OUTLETS WITH FUSES ON BOX COVER OR STANDARD 3φ 208V. OUTLETS WITH SEPARATE LOCAL FUSE BOX.
  - ⊙ SINGLE CONVENIENCE OUTLET, GROUNDING TYPE, 115V, WITH INDIVIDUAL FUSE ON BOX COVER.
  - ⊙ DAMPER MOTOR FOR VENTILATION CONTROL.
- PROCESSING AND PACKAGING MACHINERY-UNITS AND SIZES WILL DEPEND UPON SYSTEM CHOSEN. THE FOLLOWING ARE POSSIBILITIES, ALL 3φ 208V. OR 1φ 230V.**
- ⊙ E ELEVATOR FROM PIT
  - ⊙ S SIZER
  - ⊙ WS WASHER
  - ⊙ D DRYER
  - ⊙ WX WAXER
  - ⊙ I INSPECTION TABLE
- } COMBINED LOAD 7-15HP.

COOPERATIVE EXTENSION WORK IN  
AGRICULTURE AND HOME ECONOMICS  
STATE OF MISSISSIPPI  
MISSISSIPPI STATE UNIVERSITY  
UNITED STATES DEPARTMENT OF AGRICULTURE COOPERATING

**60,000 CWT POTATO WAREHOUSE**

ND. & USDA '61 EX. 5927 SHEET 5 OF 5