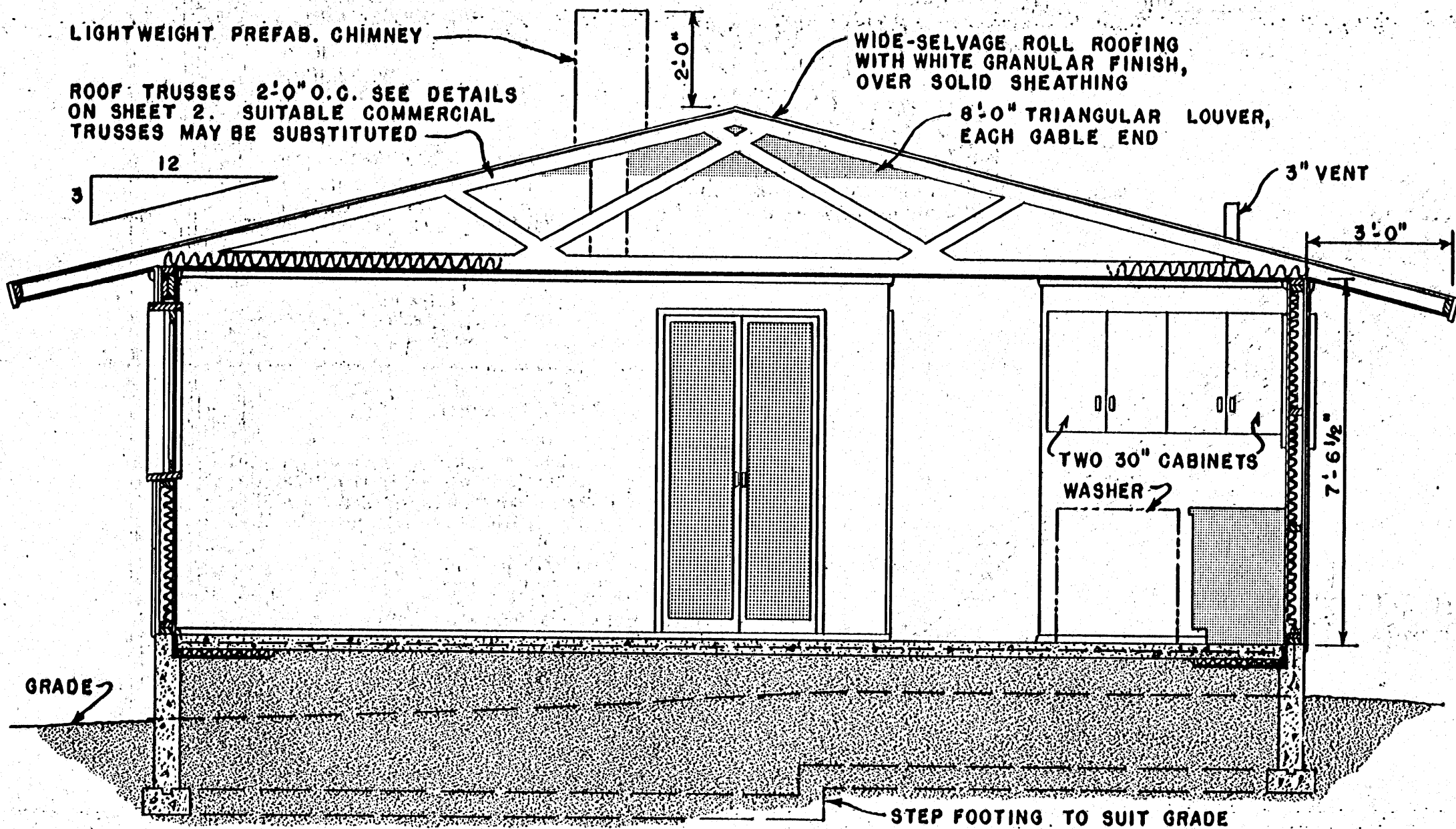


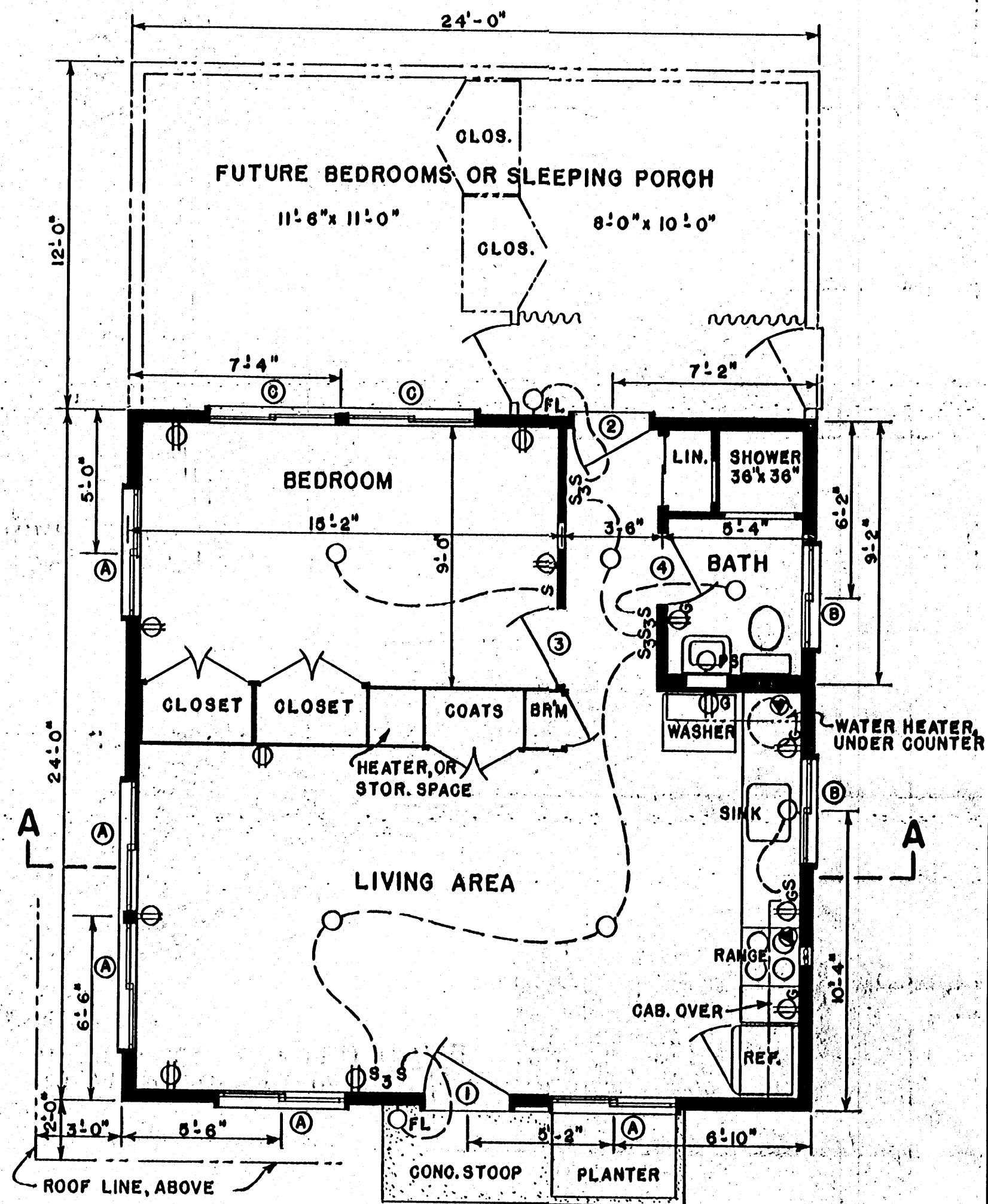
PERSPECTIVE



SECTION A-A
SCALE: 3/8" = 1'-0"

FOR ECONOMY AND EASE OF CONSTRUCTION, APPLY THE INTERIOR WALL, CEILING AND FLOOR FINISH BEFORE ERECTING ANY PARTITIONS. THIS WILL ALSO PERMIT FUTURE REMOVAL OR MOVING OF ANY PARTITIONS EXCEPT THOSE WHICH CONTAIN PLUMBING.

THE FINISH GRADE SHOULD SLOPE AWAY FROM THE CABIN ON ALL SIDES.



PLAN
SCALE: 1/4" = 1'-0"

- WINDOW SCHEDULE**
- Ⓐ... 4'-5" WIDE x 3'-5" HIGH
 - Ⓑ... 3'-7" " x 2'-5" "
 - Ⓒ... 4'-5" " x 1'-9" "
- PACKAGED SLIDING WINDOWS.
TYPE AND TRIM TO BE AS SELECTED BY OWNER.

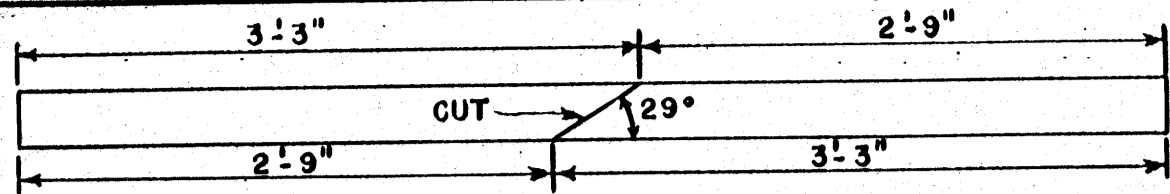
- DOOR SCHEDULE**
- ①... 3'-0" x 6'-8" EXTERIOR
 - ②... 2'-8" x 6'-8" "
 - ③... 2'-8" x 6'-8" INTERIOR
 - ④... 2'-6" x 6'-8" "

- ELECTRICAL SYMBOLS**
- S.....SWITCH
 - S₃.....THREE-WAY SWITCH
 -CEILING FIXTURE, RECESSED
 - PS.....WALL FIXTURE, PULL SWITCH
 - FL.....FLOODLIGHT
 -DUPLEX CONVENIENCE OUTLET
 - G.....DUP. CONV. OUTLET WITH GROUND
 - ⊙.....230 VOLT, RANGE & WATER HEATER

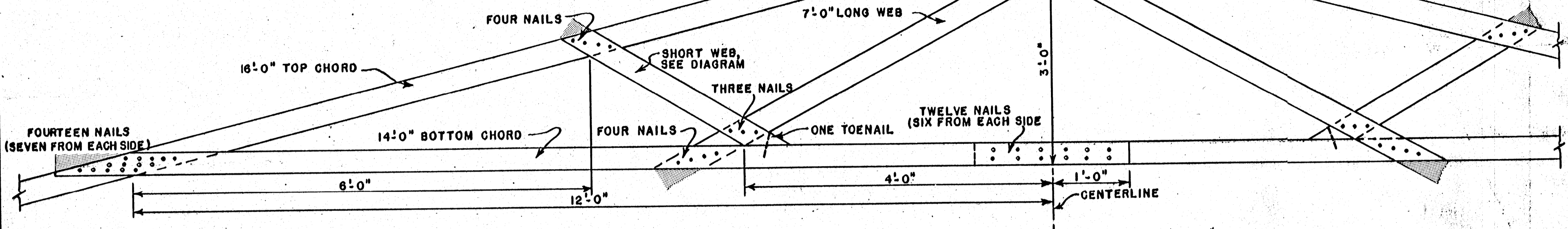
COOPERATIVE EXTENSION WORK IN
 AGRICULTURE AND HOME ECONOMICS
 STATE OF MISSISSIPPI
 MISSISSIPPI STATE UNIVERSITY
 AND
 UNITED STATES DEPARTMENT OF AGRICULTURE COOPERATING

CABIN

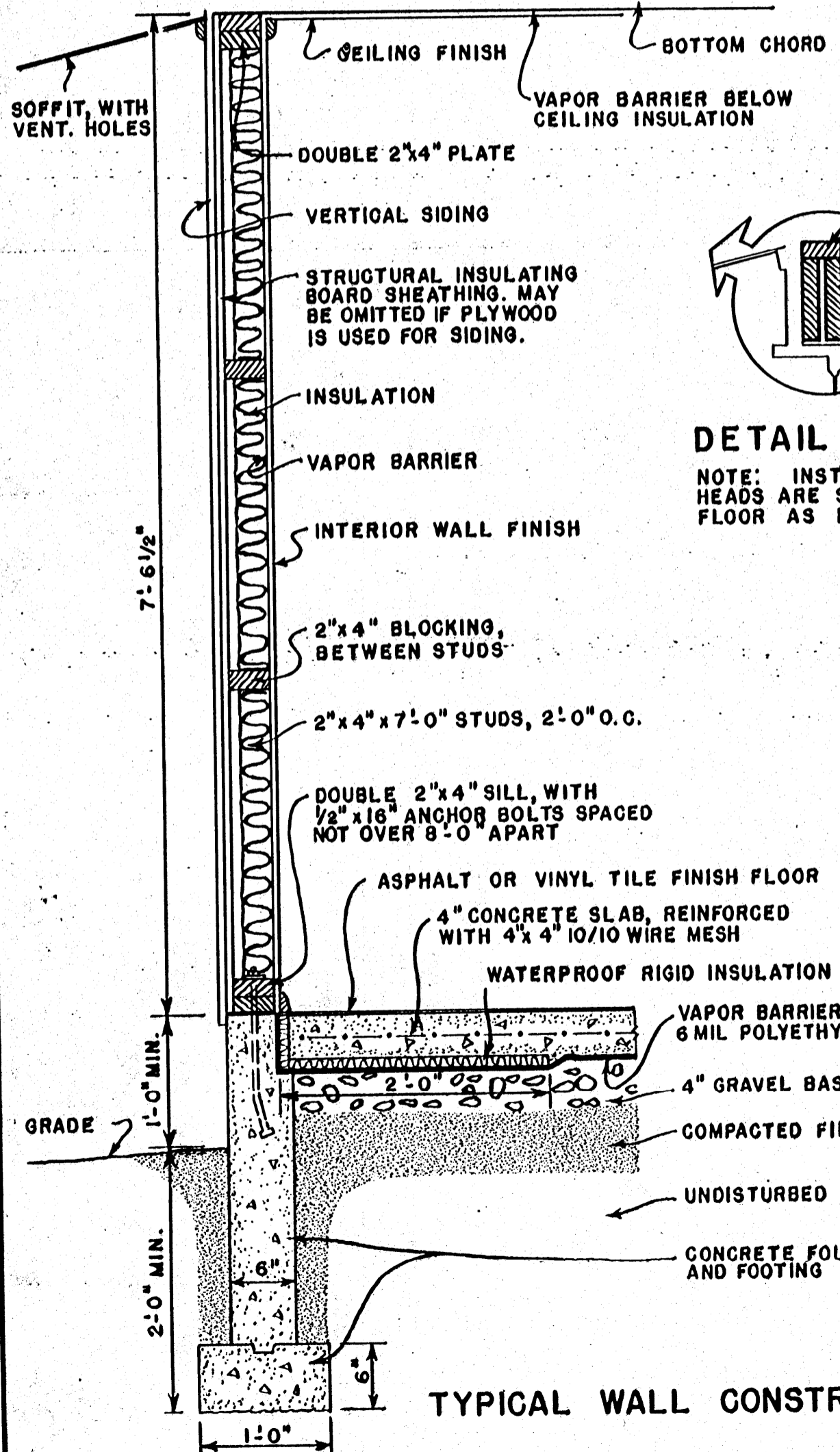
USDA '61 EX. 5928 SHEET 1 OF 3



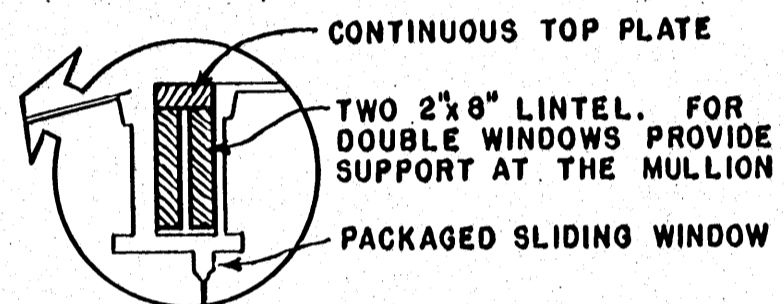
CUTTING DIAGRAM FOR SHORT WEBS
 CHECK ANGLE ON THE JOB. ALL OTHER CUTS ARE MADE AFTER THE TRUSS IS ASSEMBLED.



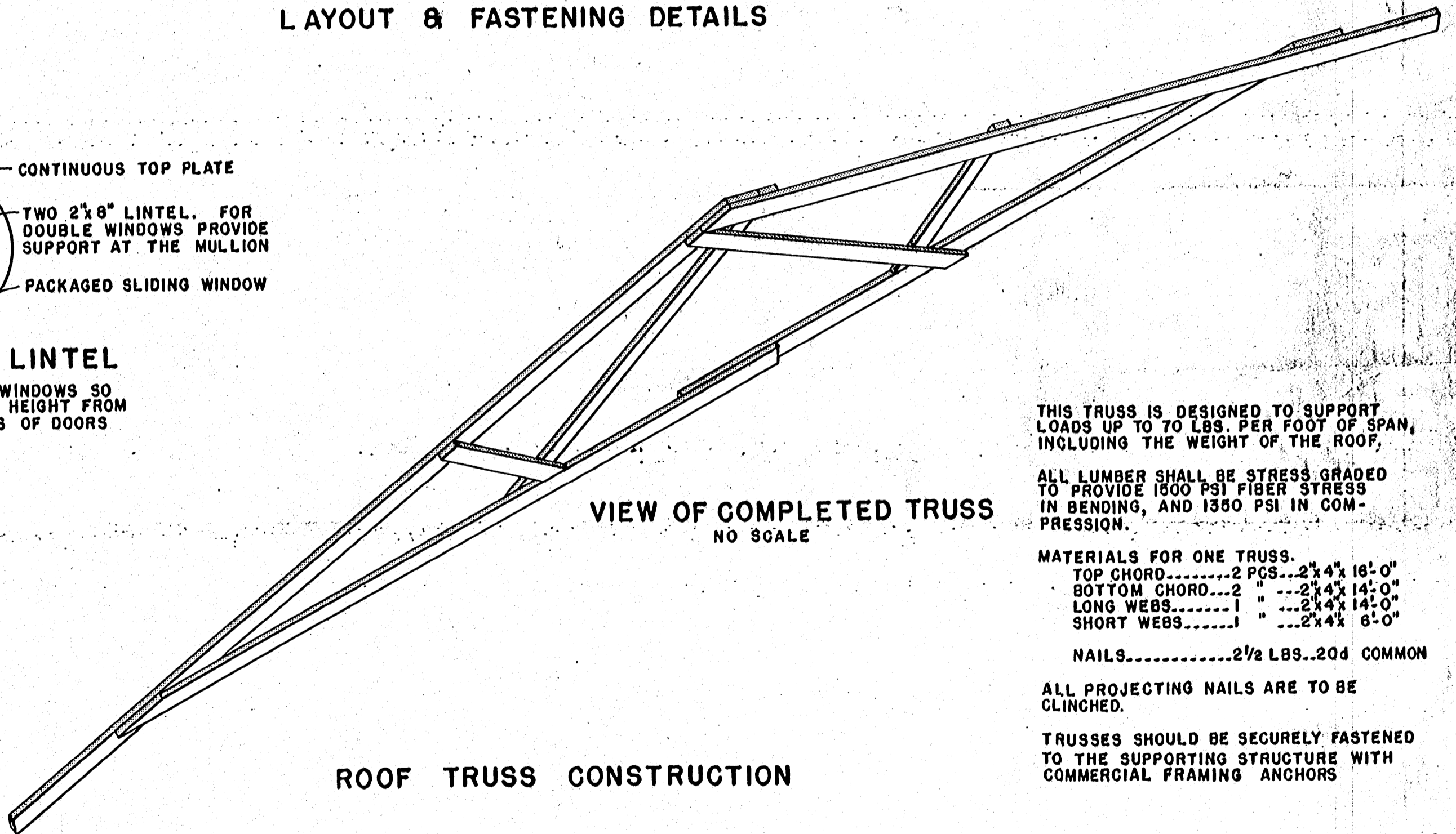
LAYOUT & FASTENING DETAILS



TYPICAL WALL CONSTRUCTION



DETAIL AT LINTEL
 NOTE: INSTALL WINDOWS SO HEADS ARE SAME HEIGHT FROM FLOOR AS HEADS OF DOORS



VIEW OF COMPLETED TRUSS
 NO SCALE

ROOF TRUSS CONSTRUCTION

THIS TRUSS IS DESIGNED TO SUPPORT LOADS UP TO 70 LBS. PER FOOT OF SPAN, INCLUDING THE WEIGHT OF THE ROOF.

ALL LUMBER SHALL BE STRESS GRADED TO PROVIDE 1500 PSI FIBER STRESS IN BENDING, AND 1350 PSI IN COMPRESSION.

- MATERIALS FOR ONE TRUSS.**
- TOP CHORD.....2 PGS...2x4x 16'-0"
 - BOTTOM CHORD...2 " ...2x4x 14'-0"
 - LONG WEBS.....1 " ...2x4x 14'-0"
 - SHORT WEBS.....1 " ...2x4x 6'-0"
 - NAILS.....2 1/2 LBS..20d COMMON

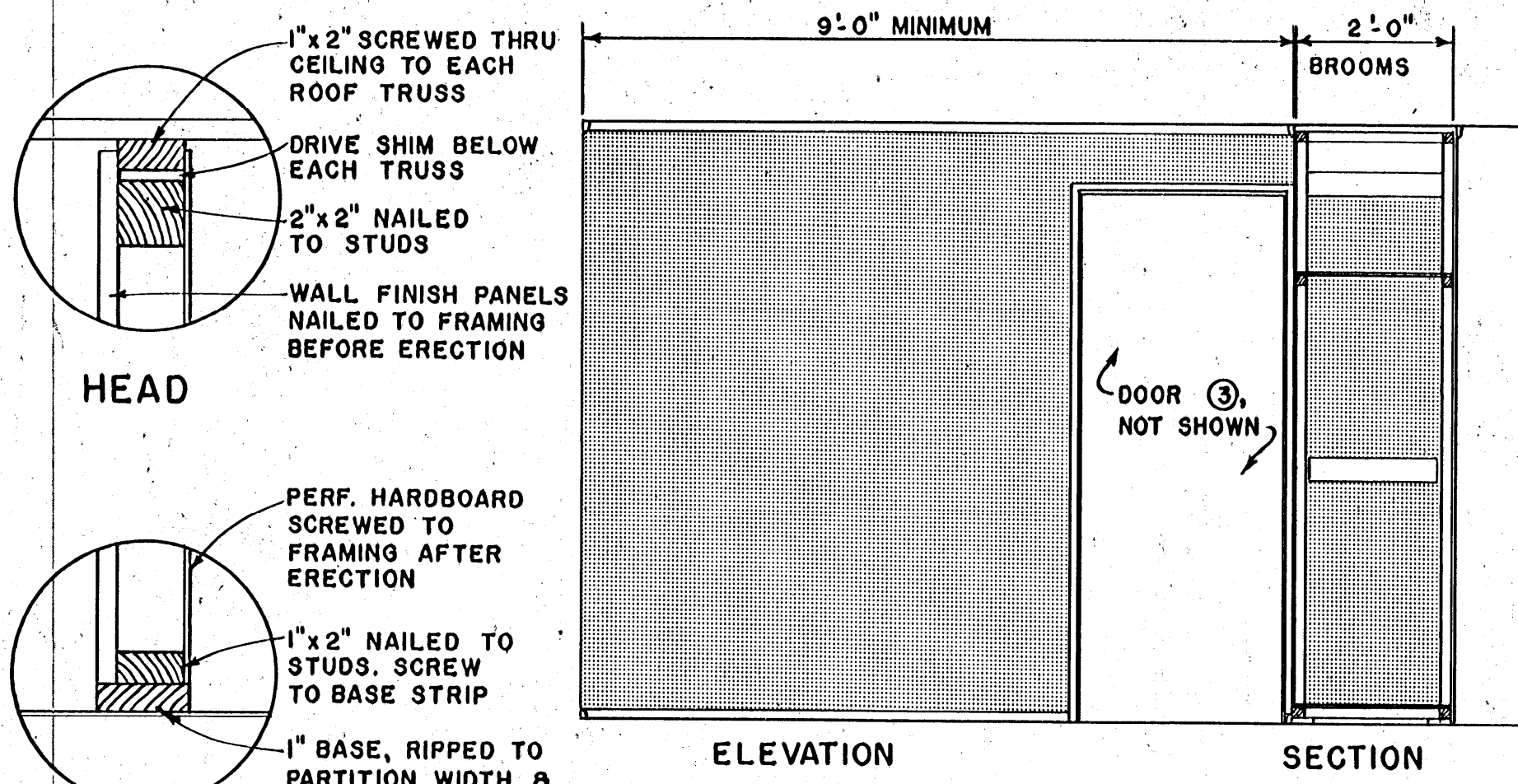
ALL PROJECTING NAILS ARE TO BE CLINCHED.

TRUSSES SHOULD BE SECURELY FASTENED TO THE SUPPORTING STRUCTURE WITH COMMERCIAL FRAMING ANCHORS

SCALE: 1" = 1'-0", EXCEPT AS NOTED.

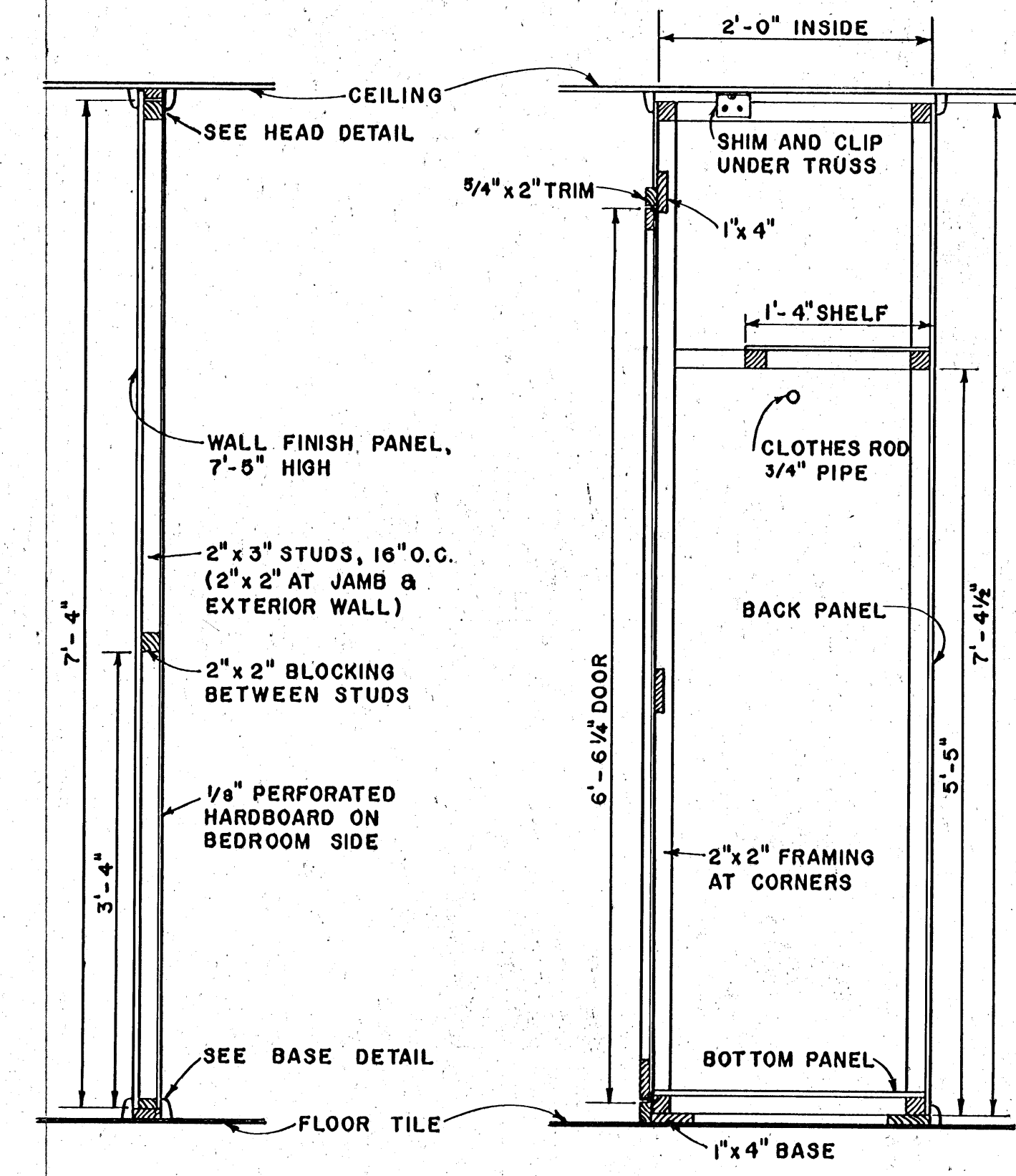
COOPERATIVE EXTENSION WORK IN
 AGRICULTURE AND HOME ECONOMICS
 STATE OF MISSISSIPPI
 MISSISSIPPI STATE UNIVERSITY
 AND
 UNITED STATES DEPARTMENT OF AGRICULTURE COOPERATING

CABIN



HEAD

BASE

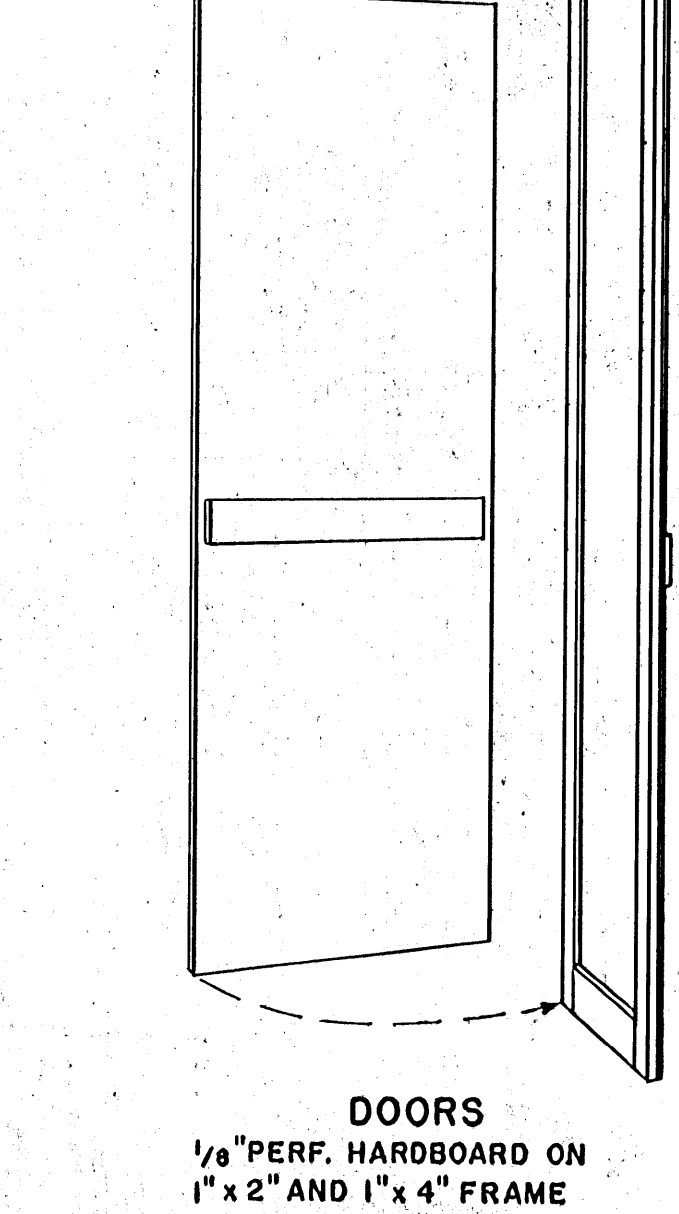
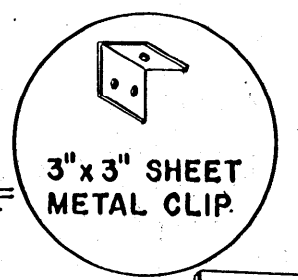


PARTITION

STORAGE PARTITION

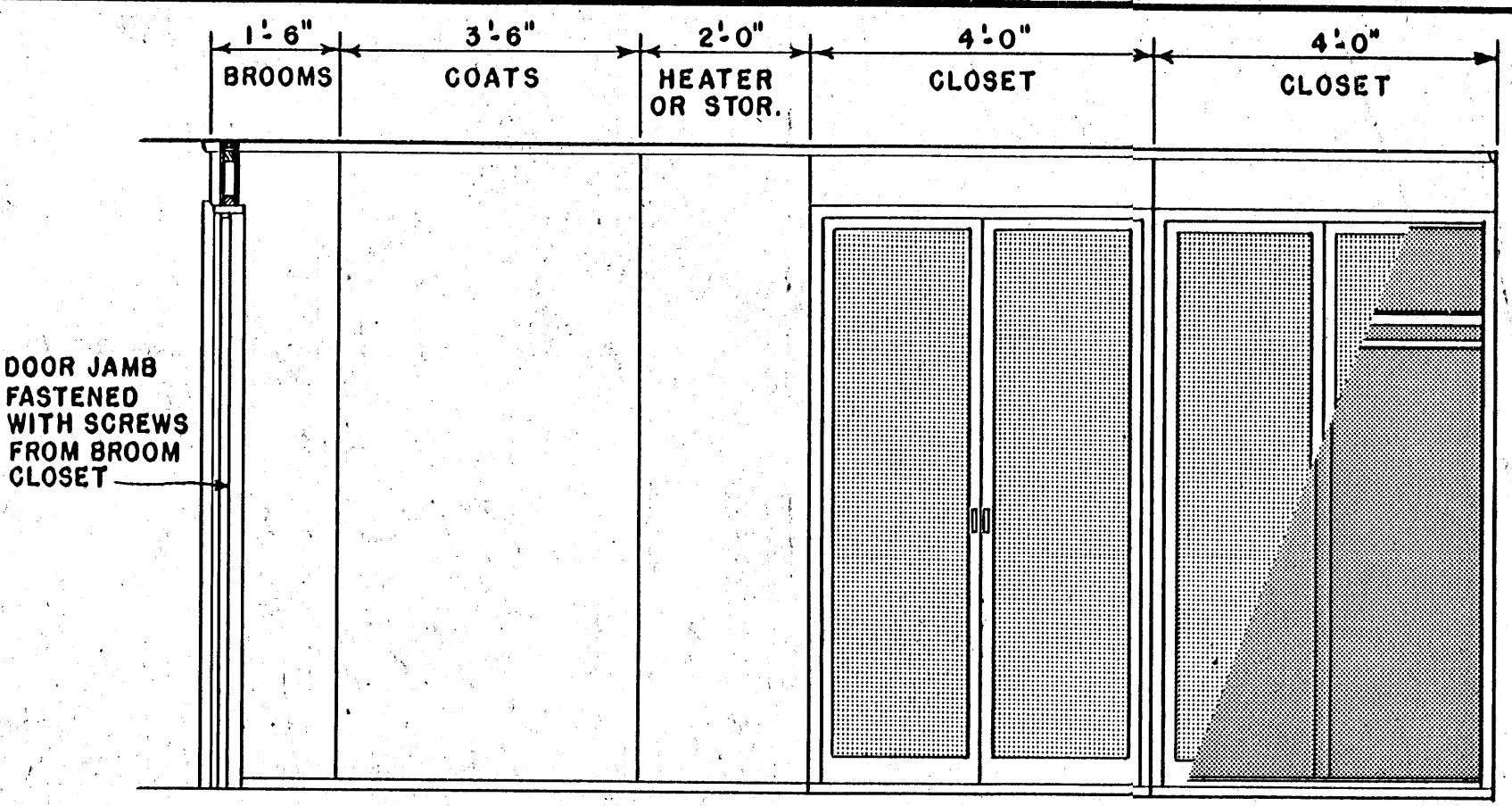
TYPICAL CROSS SECTIONS

SCALE: 1" = 1'-0"



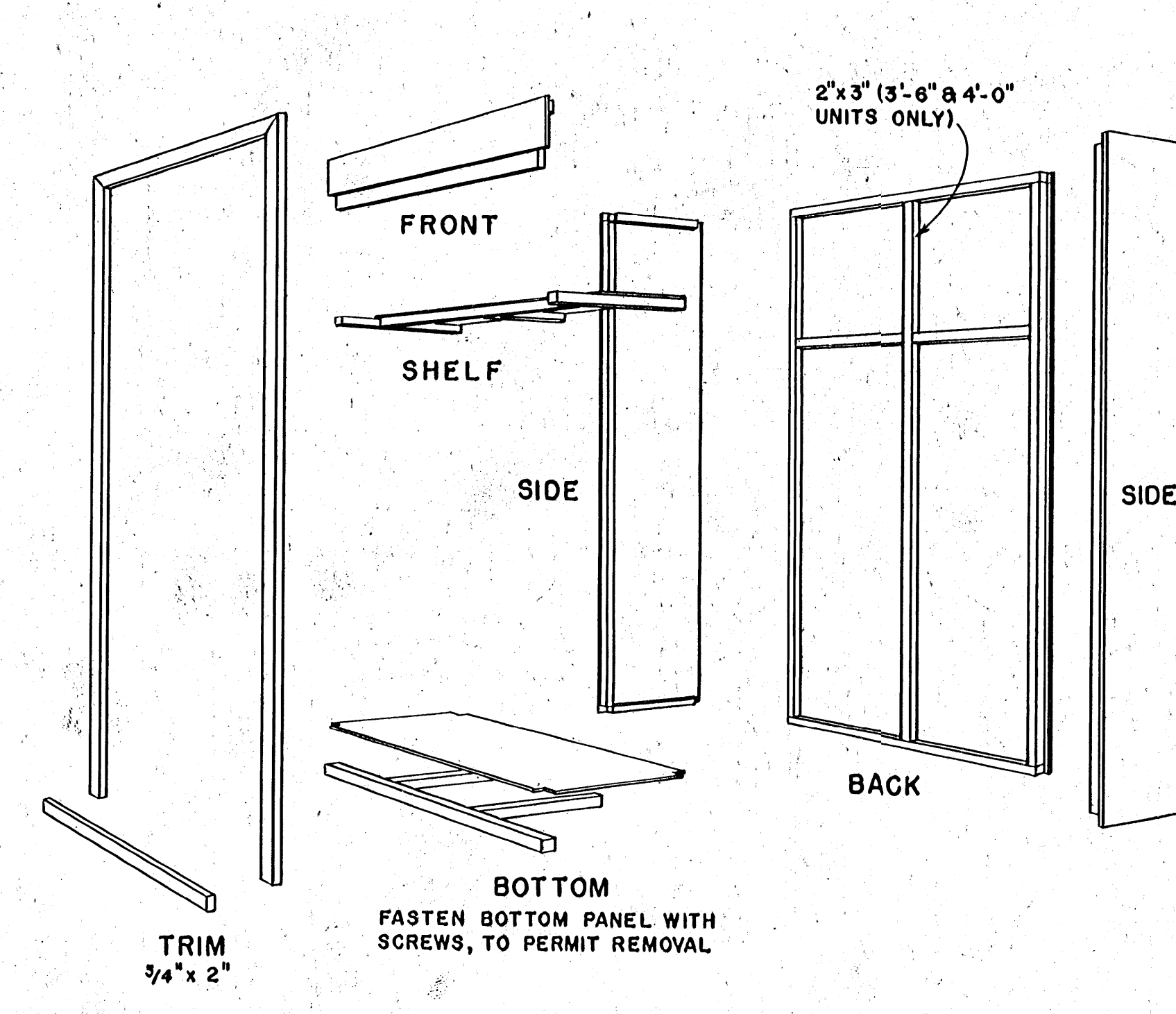
DOORS

1/8" PERF. HARDBOARD ON 1" x 2" AND 1" x 4" FRAME



ELEVATION, CUT AWAY TO SHOW INTERIOR

STORAGE PARTITION



EXPLODED VIEW OF TYPICAL CLOSET UNIT

SHOWING COMPONENTS READY FOR ASSEMBLY

THESE BEDROOM PARTITIONS ARE DESIGNED TO PERMIT FUTURE REARRANGEMENT OR REMOVAL.

THE STORAGE PARTITION IS MADE UP OF INDIVIDUAL CLOSET UNITS WHICH ARE SUPPORTED ON CONTINUOUS 1"x4" BOARDS WHICH SERVE TO PROTECT THE FINISH FLOOR TILE. JOINTS AT THE FLOOR AND CEILING ARE COVERED BY TRIM. USE OF VERTICALLY GROOVED PLYWOOD OR HARDBOARD PANELS WILL AID IN CONCEALING THE JOINTS BETWEEN UNITS.

ALL FRAMING IS 2"x2" EXCEPT AS NOTED.

CLOSET DOORS SHOULD HAVE MAGNETIC LATCHES AT TOP AND BOTTOM.

PERFORATED HARDBOARD IS USED ON CLOSET DOORS FOR VENTILATION AND ON THE OTHER PARTITION FOR TEXTURE AND TO PERMIT HANGING LIGHT SHELVES, ETC., ON COMMERCIAL BRACKETS.

CONSTRUCTION OF HEATER ENCLOSURE WILL DEPEND ON THE TYPE OF HEATING UNIT TO BE INSTALLED.

COOPERATIVE EXTENSION WORK IN AGRICULTURE AND HOME ECONOMICS
STATE OF MISSISSIPPI
MISSISSIPPI STATE UNIVERSITY
AND
UNITED STATES DEPARTMENT OF AGRICULTURE COOPERATING

CABIN

USDA '61 EX. 5928 SHEET 5 OF 3