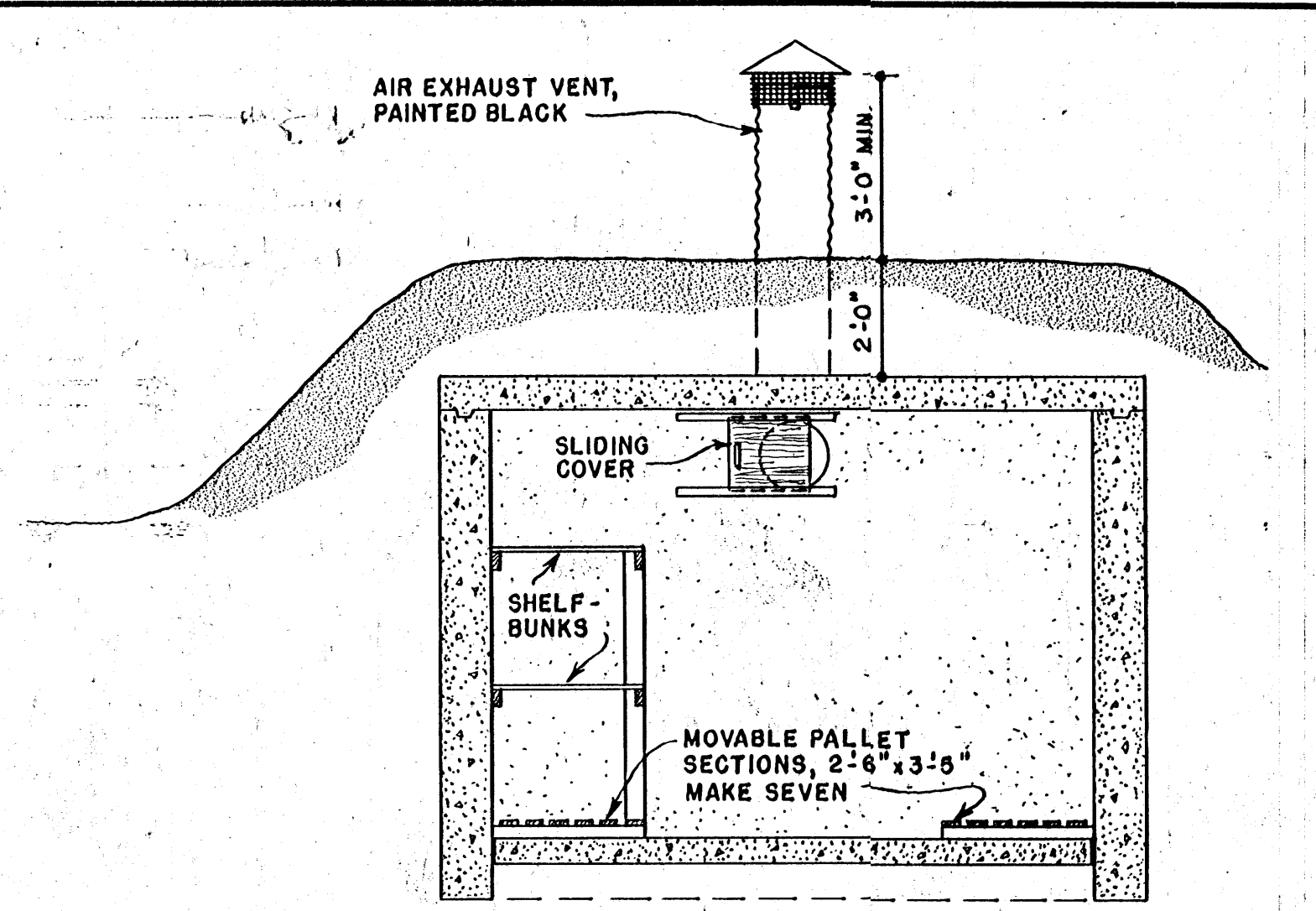
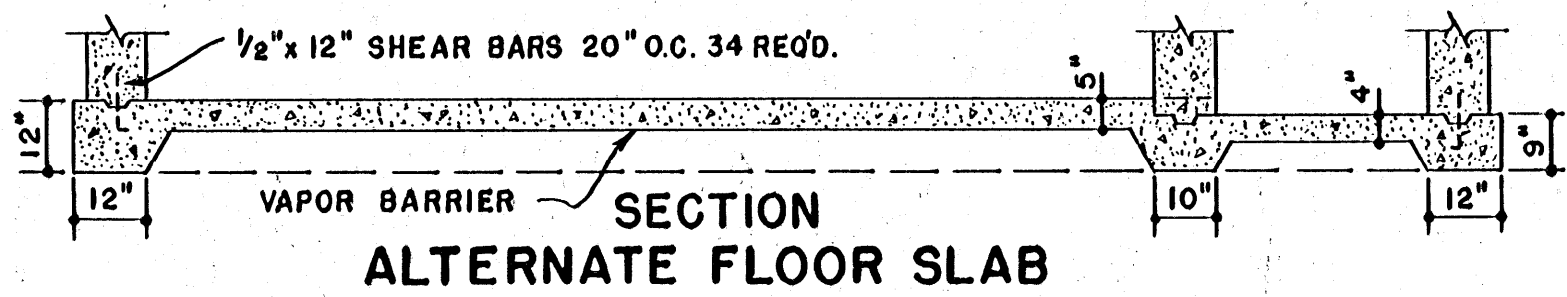


**SECTION A-A**

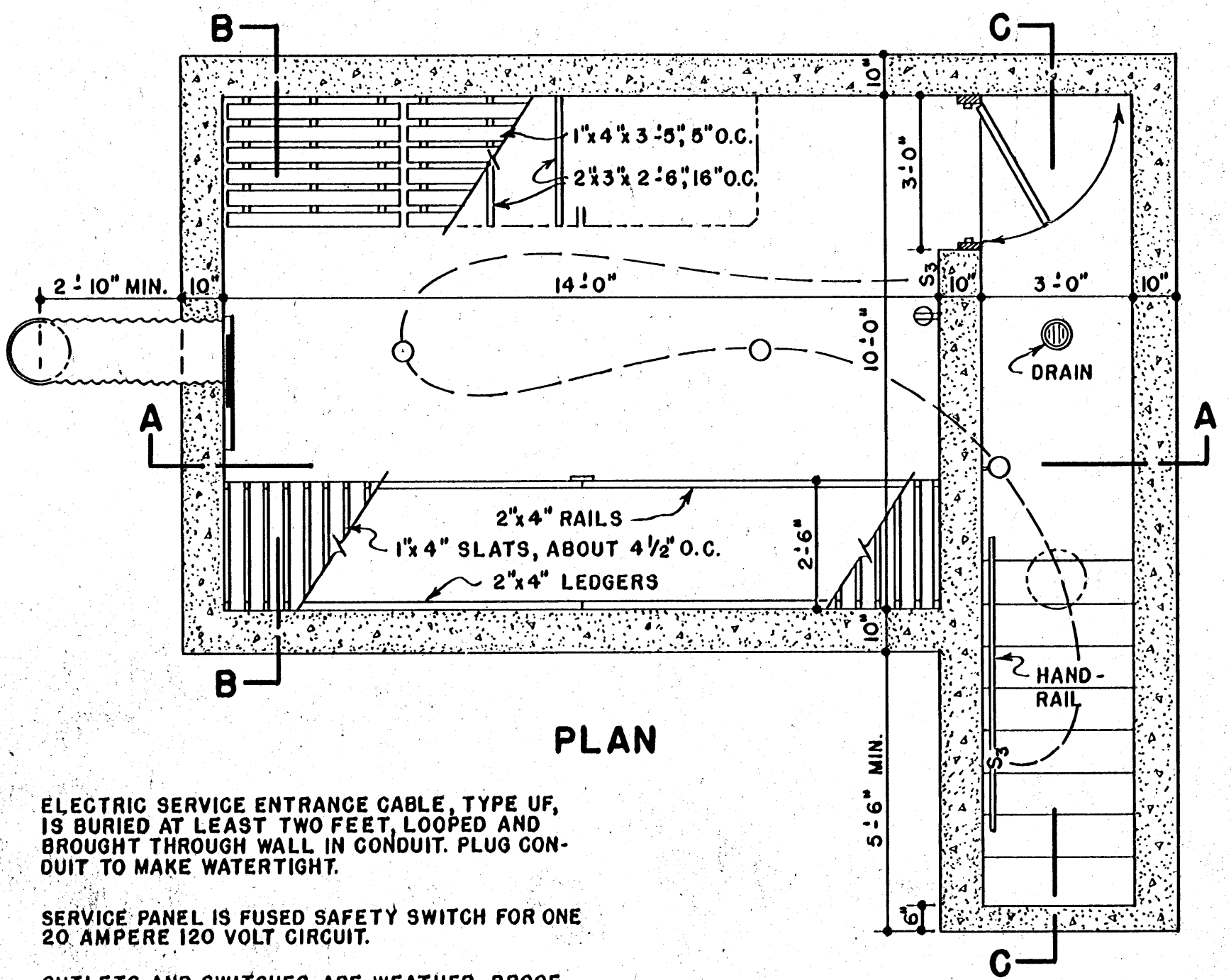


**SECTION B-B**



**SECTION ALTERNATE FLOOR SLAB**

3/4" PIPE DOOR STOPS EACH SIDE. SET IN CONCRETE WALLS AT A SLIGHT ANGLE OR FASTENED TO OUTSIDE OF WALLS. SEE HOOK DETAIL, SHEET 2

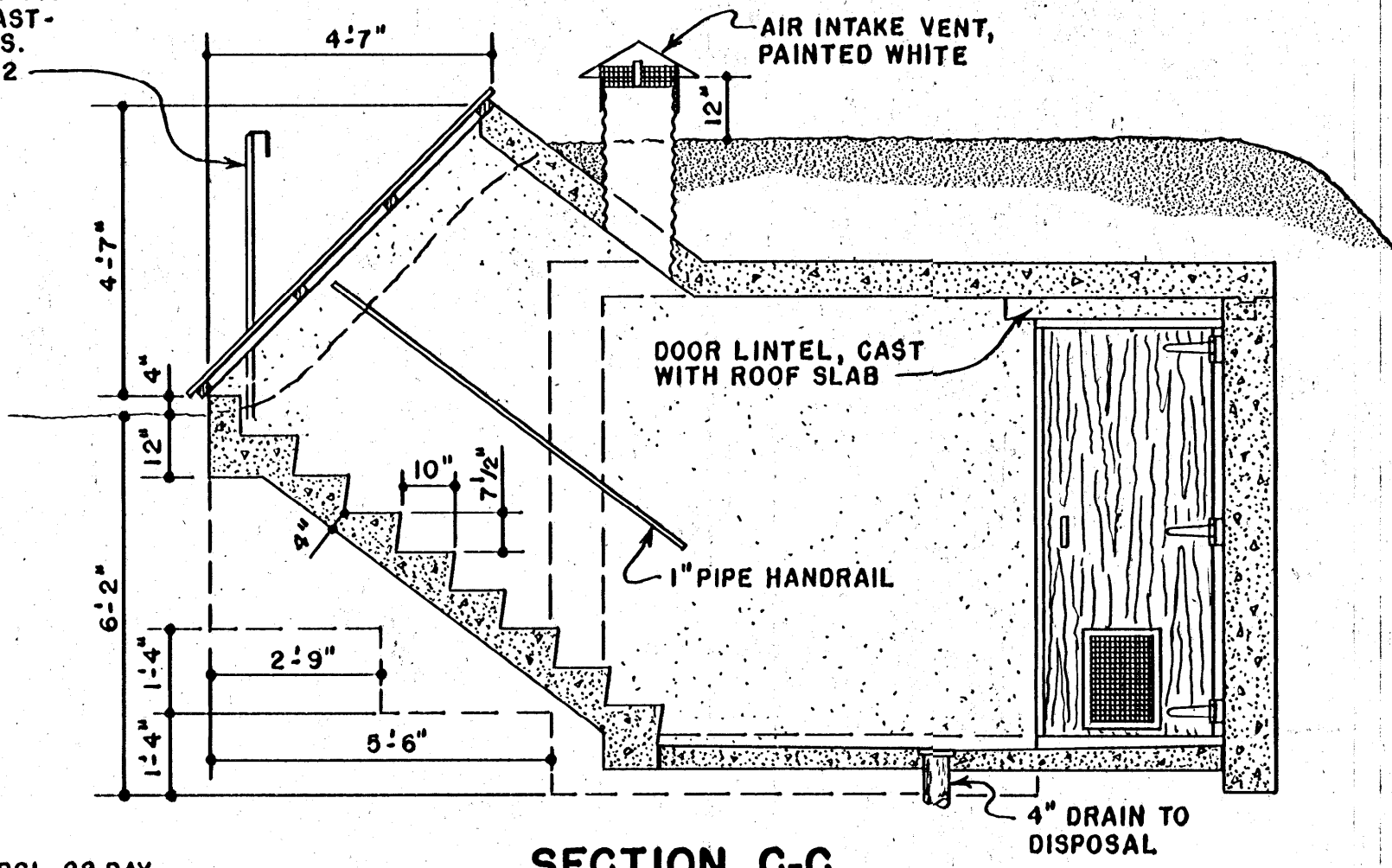


**PLAN**

ELECTRIC SERVICE ENTRANCE CABLE, TYPE UF, IS BURIED AT LEAST TWO FEET, LOOPED AND BROUGHT THROUGH WALL IN CONDUIT. PLUG CONDUIT TO MAKE WATERTIGHT.

SERVICE PANEL IS FUSED SAFETY SWITCH FOR ONE 20 AMPERE 120 VOLT CIRCUIT.

OUTLETS AND SWITCHES ARE WEATHER-PROOF GROUNDING TYPE. CIRCUIT WIRING IS No. 12 UF WITH BOND WIRE.



**SECTION C-C**

CONCRETE TO TEST 3,000 PSI, 28 DAY COMPRESSION. WATER-CEMENT RATIO, 6 GALLONS PER SACK.

CHAMFER OUTSIDE WALL AND ROOF CORNERS 3/4"

APPLY TWO COATS OF BITUMINOUS WATERPROOFING TO OUTSIDE SURFACES.

ALL STEEL, EXCEPT REINFORCING BARS, SHALL BE HOT-DIP GALVANIZED OR OTHERWISE PROTECTED FROM CORROSION.

ALL LUMBER SHALL BE TREATED, AFTER CUTTING, WITH A COPPER NAPHTHENE PRESERVATIVE. A 15 MINUTE DIP IS SUGGESTED.

FACES AND EDGES OF PLYWOOD SHALL BE GIVEN TWO COATS OF OUTSIDE PENETRATING SEALER.

*IF THE SHELTER IS TO BE USED BY MORE THAN SIX PERSONS, PROVIDE MECHANICAL VENTILATION.*

SCALE: 3/8" = 1'-0"

COOPERATIVE EXTENSION WORK IN AGRICULTURE AND HOME ECONOMICS			
STATE OF MISSISSIPPI			
MISSISSIPPI STATE UNIVERSITY			
AND UNITED STATES DEPARTMENT OF AGRICULTURE COOPERATING			
<b>STORAGE AND FALLOUT SHELTER</b>			
CAST CONCRETE CONSTRUCTION			
USDA	'63	EX. 5948	SHEET 1 OF 2