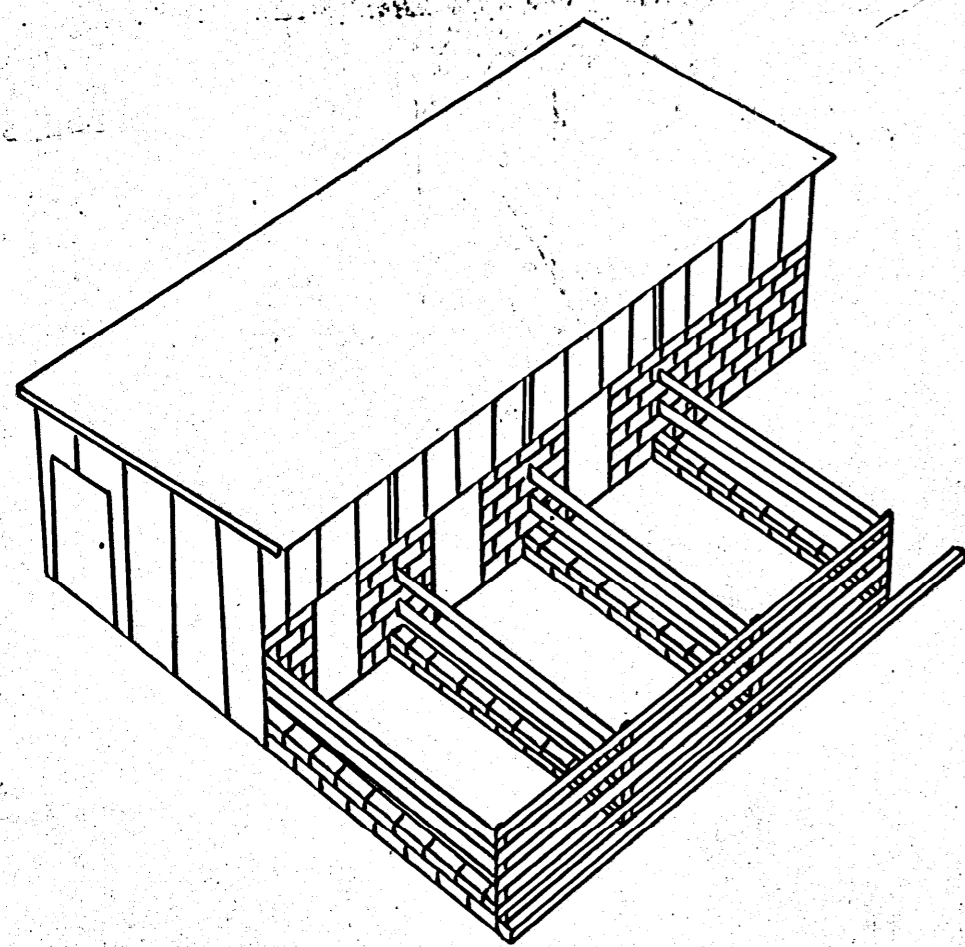
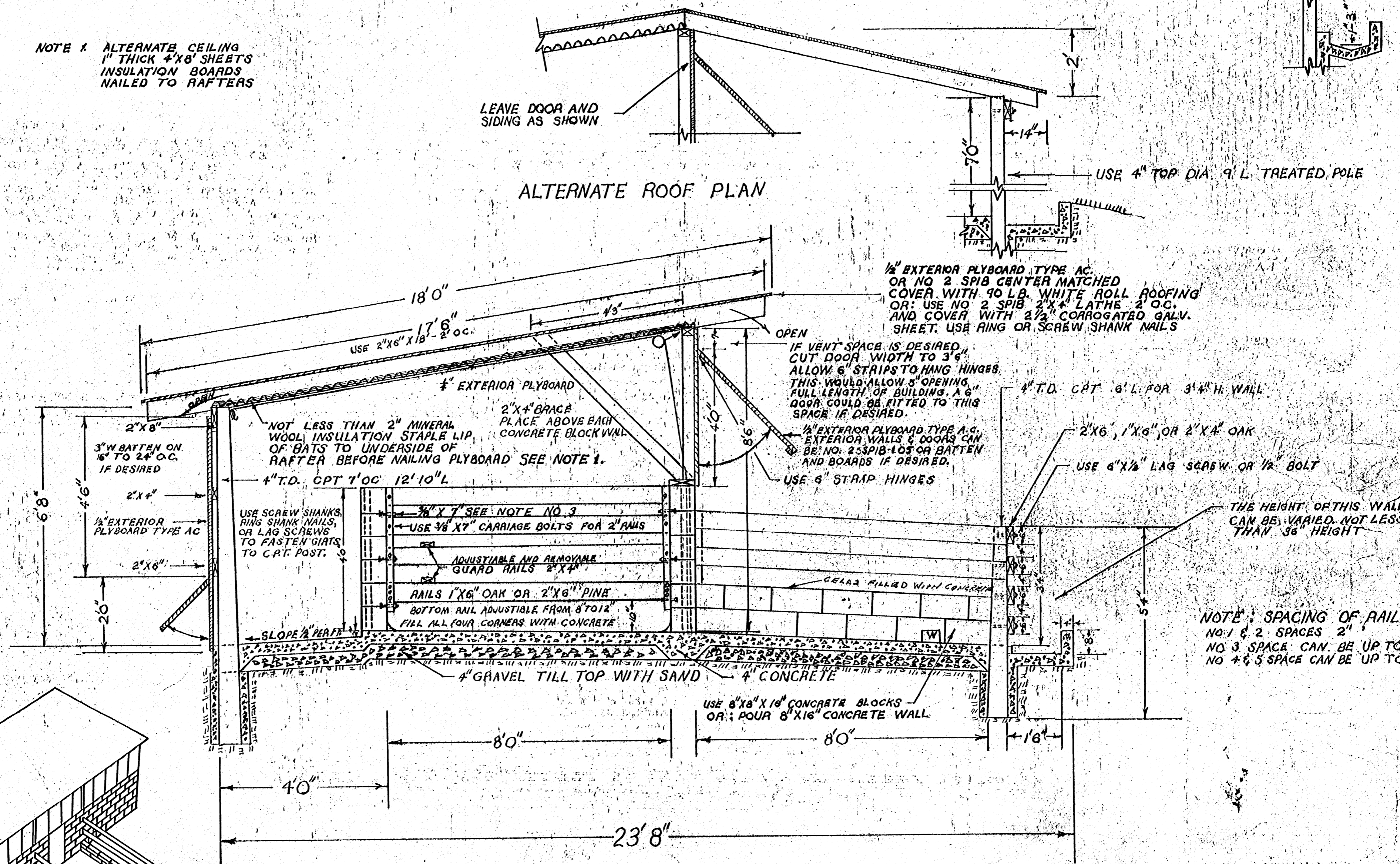


NOTE 1 ALTERNATE CEILING  
1" THICK 4'X8' SHEETS  
INSULATION BOARDS  
NAILED TO RAFTERS

LEAVE DOOR AND  
SIDING AS SHOWN

ALTERNATE ROOF PLAN

ALTERNATE GUTTER PLAN



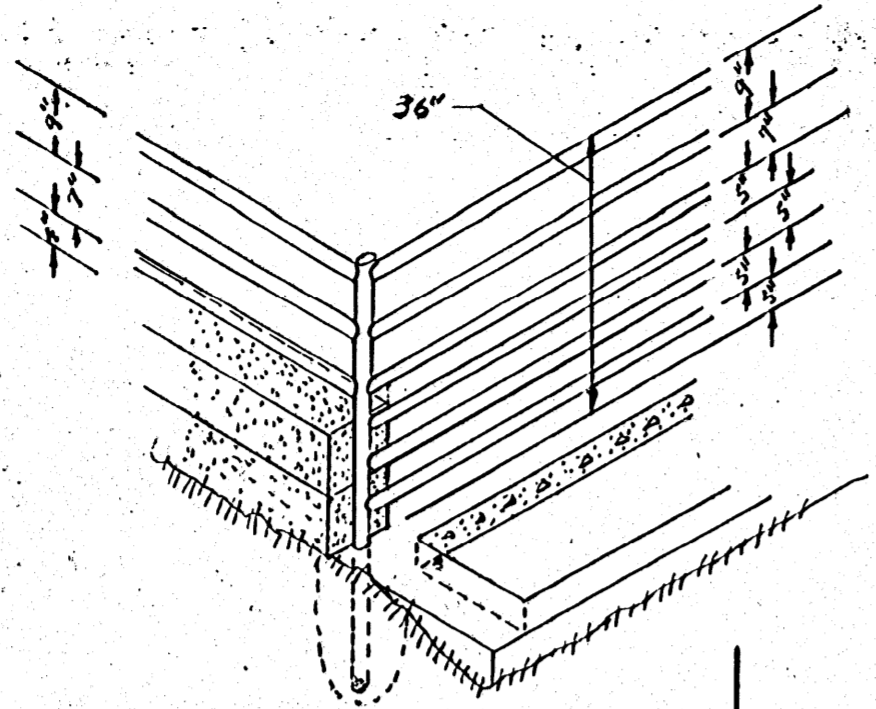
SCALE 1/2" = 1'

FIGURE 2

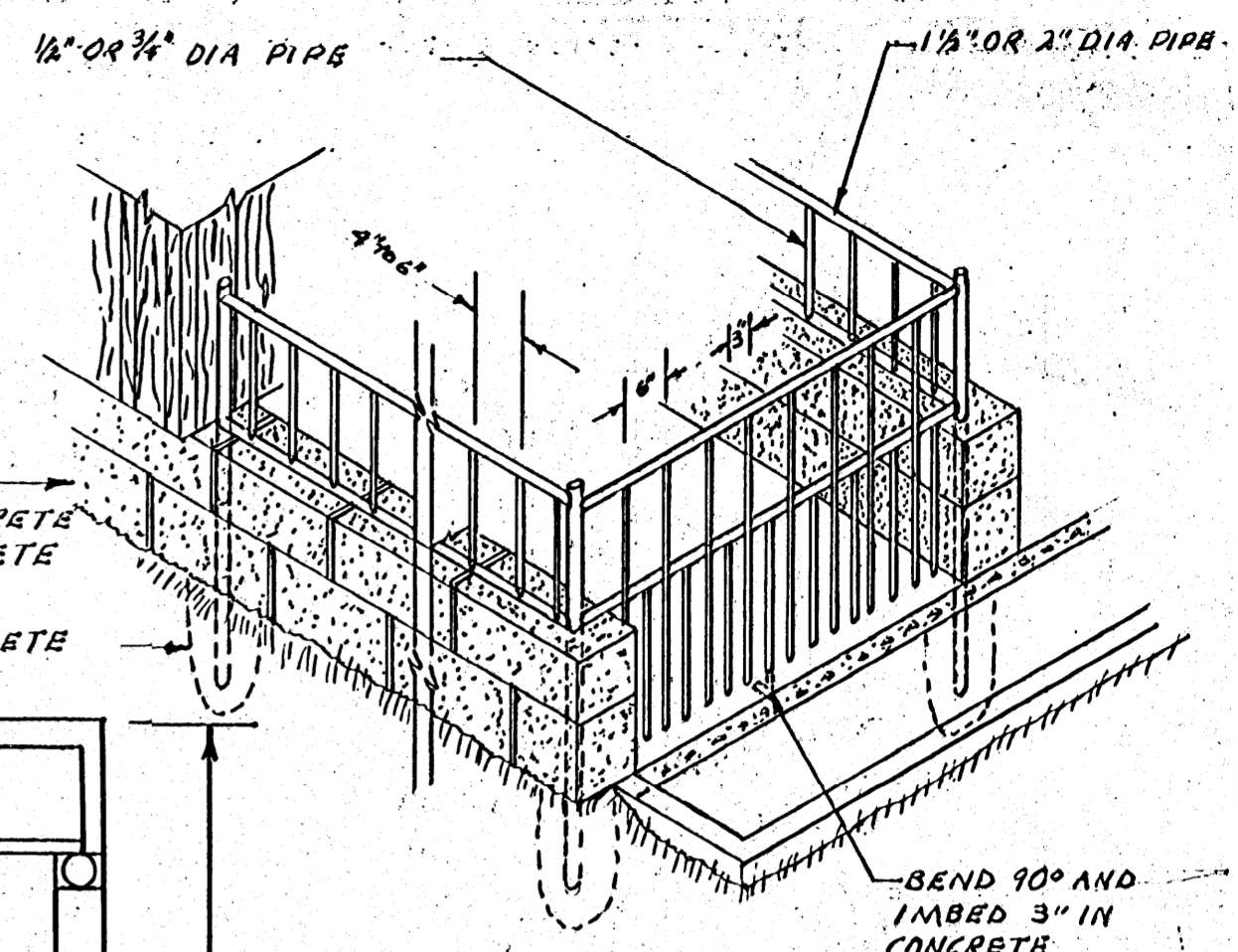
EXPANDABLE-COMBINATION HOG  
NURSING AND FARROWING BARN  
COOPERATIVE EXTENSION WORK IN  
AGRICULTURE AND HOME ECONOMICS  
STATE OF MISSISSIPPI  
MISSISSIPPI STATE UNIVERSITY  
AND  
U.S. DEPT. OF AGRIC. COOPERATION  
APPROVED BY: W.L. RICHMOND  
CHECKED BY: EBB MILLER - DRAWN BY: J.W. WEAVER  
DEC 1965 NO. 5 14 SHEET 1 OF 2

No. 5993-A

387



NOTE 4: 1 1/2" OR 2" DIA PIPE CAN BE USED HORIZONTALLY AS RAILS. LEAVE 4" SPACE BETWEEN PARTITION CURB AND APRON EDGE. PLACE POST HERE THEN ATTACH HORIZONTAL 1 1/2" DIA OR 2" DIA RAILS  
SEE DETAIL AT LEFT  
WELD ALL JOINTS  
SIMILAR SCRAP IRON CAN BE USED



NOTE NO. 1: WIDTH OF PEN CAN BE VARIED UP TO 8'0" IN STEPS OF 4" PROVIDED 4' X 8' X 8' CONCRETE BLOCKS ARE AVAILABLE.

NOTE NO. 2: RAILS ARE ADJUSTABLE IN WIDTH IN STEPS OF 6" BY MOVING RAIL TO OPPOSITE SIDE OF 2' X 4" UPRIGHT FROM THAT SHOWN.

NOTE NO. 3: WHERE BOLTS ARE LAID IN MORTAR JOINT AND PROTRUDE INTO CELLS. FILL CELLS WITH CONCRETE.

CONCRETE BLOCKS  
FILL CELLS WITH CONCRETE OR CAST IN PLACE CONCRETE 8" OR 16" HIGH

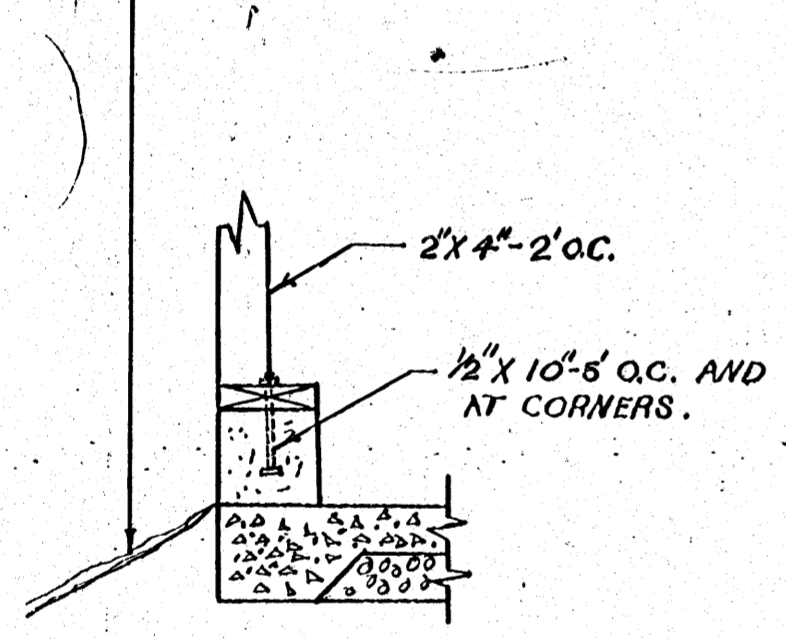
CONCRETE

BEND 90° AND IMBED 3" IN CONCRETE

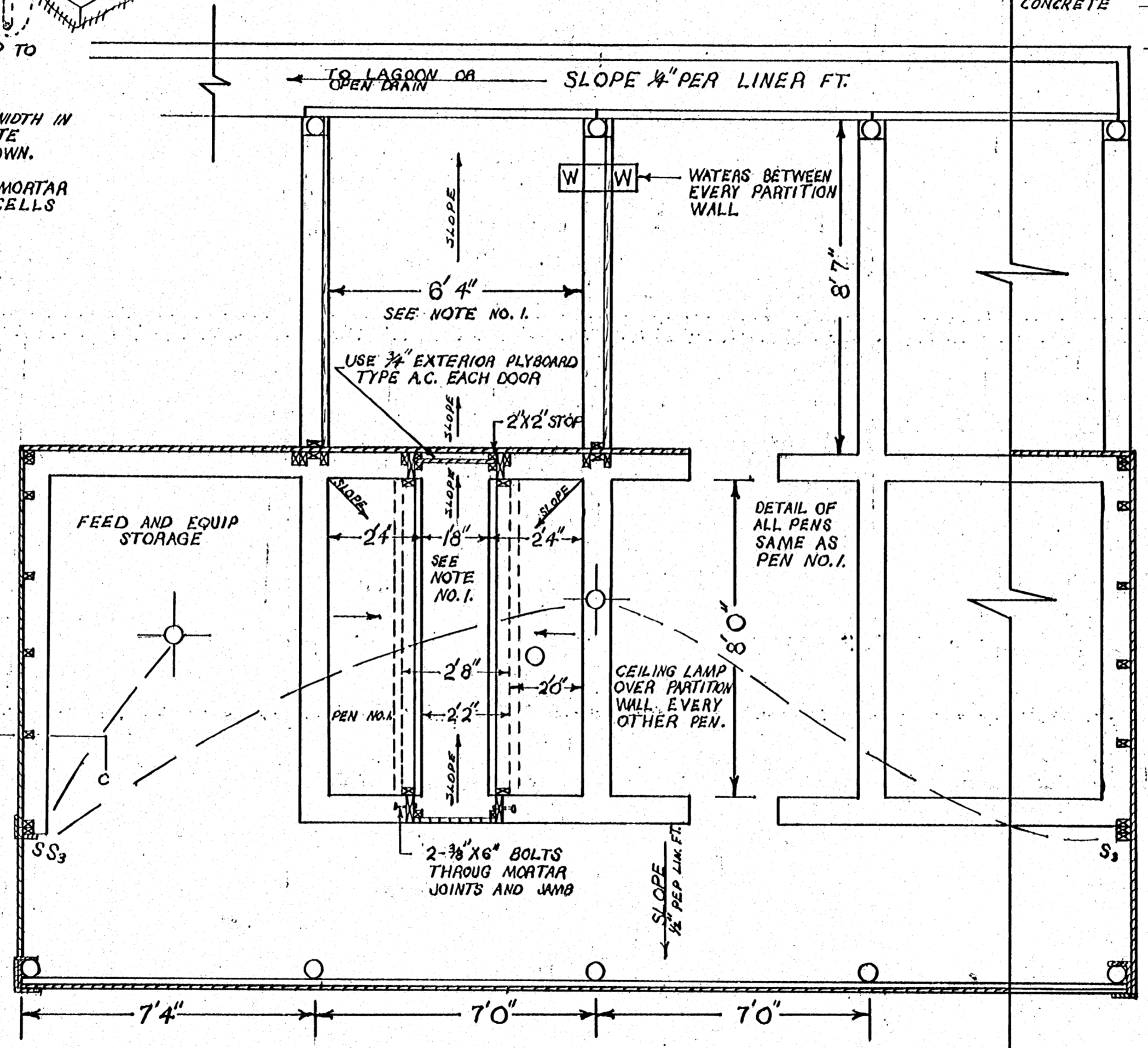
VIEW SHOWING USE OF SCRAP PIPE AS PEN RAILS SEE NOTE 4  
LEGEND: ELECTRIC SYMBOLS

- HEAT LAMP BROODER
- ⊙ CEILING FIXTURE
- S SINGLE POLE SWITCH
- S<sub>3</sub> THREE WAY SWITCH

SLOPE EARTH FILL FROM FOUNDATION



C-SECTION C-C  
SCALE 3/4" = 1'0"



FLOOR PLAN  
SCALE 3/8" = 1'0"

EXPANDABLE-COMBINATION JOG NURSING AND FARROWING BARN  
COOPERATIVE EXTENSION WORK IN AGRICULTURE AND HOME ECONOMICS  
STATE OF MISSISSIPPI  
MISSISSIPPI STATE UNIVERSITY  
AND  
U.S. DEPT. OF AGRIC. COOPERATING  
APPROVED BY: N.L. RICHMOND  
CHECKED BY: LIE MILLER-DRAWN BY: JWR  
DEC 1965 / NO. 8 14 / SHEET 2 of 2

5993-A