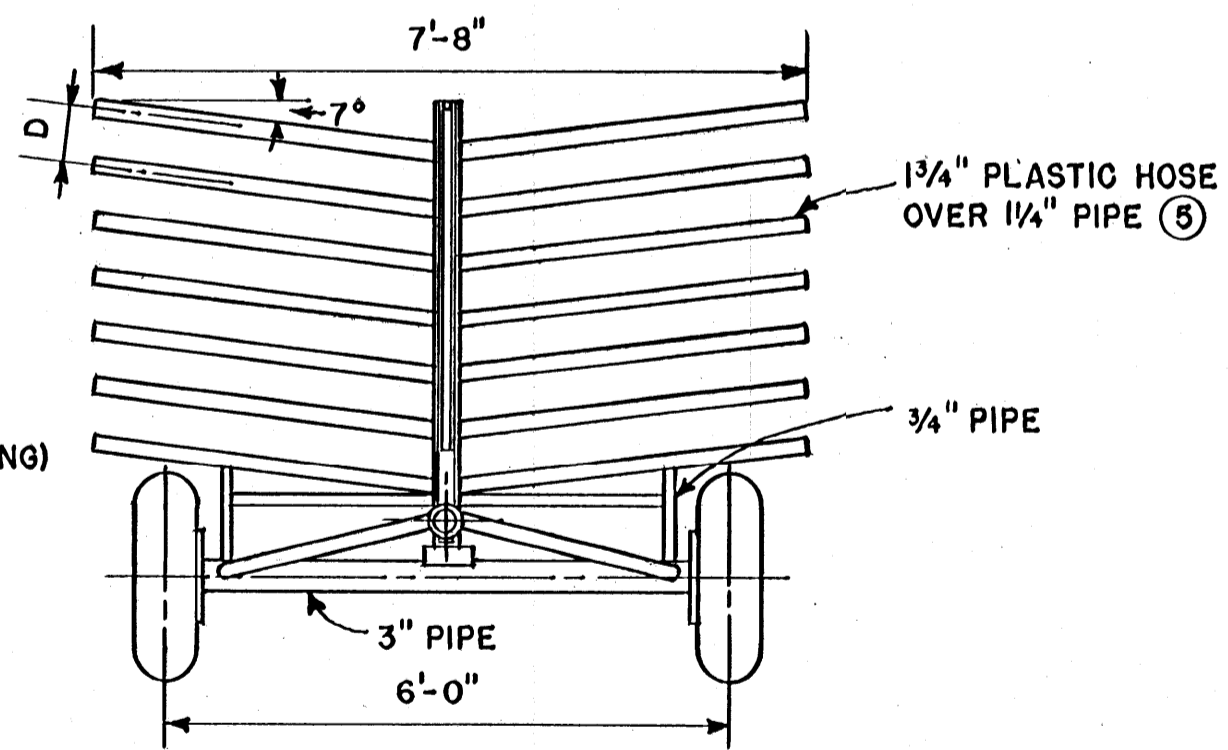


SIDE VIEW



TYPICAL SECTION

	PIPE LENGTH (FT.)			PIPE DIAMETER (IN.)					
	20	30	40	2	3	4	5	6	
A	14'	18'	22"						
B	6'	9'	12"						
C	7'-4"	9'-3"	11'-3"						
D				5 1/2"	6 1/2"	7 1/2"	8 1/2"	9 1/2"	

KEY:

1. RACK HEIGHT IS DETERMINED BY SPRINKLER PIPE SIZE AND THE NUMBER OF TIERS REQUIRED.
2. BASKET, FOR CARRYING SPRINKLER HEADS OR OTHER LOOSE OBJECTS, IS MADE FROM 1"x1" ANGLE IRON AND EXPANDED METAL.
3. BAFFLE NEEDED ONLY FOR SPRINKLER PIPE USING CENTER RISERS.
4. POSITION HITCH SO THAT TRAILER RIDES LEVEL WHEN TOWED.
5. CUT 1/4" PIPE 7'-8" LONG, BEND 14° AT CENTER, AND WELD BETWEEN CHANNELS.

COOPERATIVE EXTENSION WORK IN
 AGRICULTURE AND HOME ECONOMICS
 STATE OF MISSISSIPPI
 MISSISSIPPI STATE UNIVERSITY
 AND
 UNITED STATES DEPARTMENT OF AGRICULTURE COOPERATING

SPRINKLER PIPE TRAILER

CALIF. '68 EX. 6046 SHEET 1 OF 1