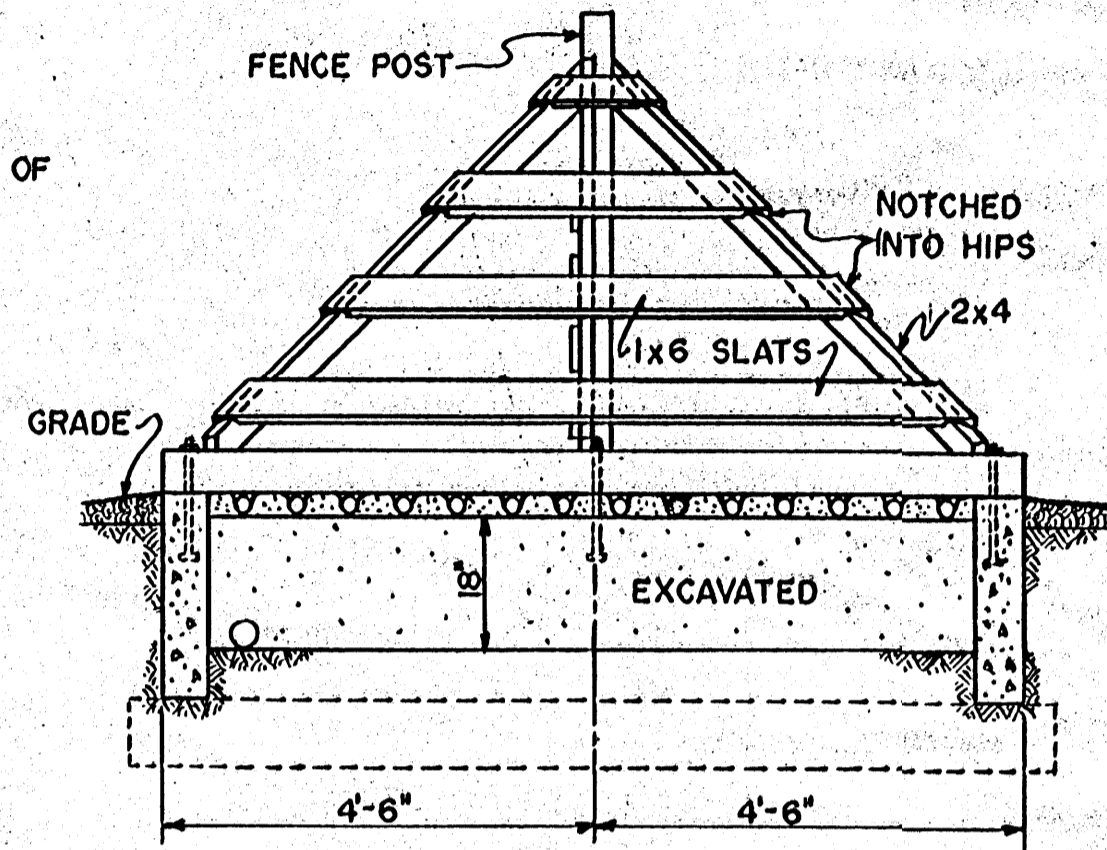
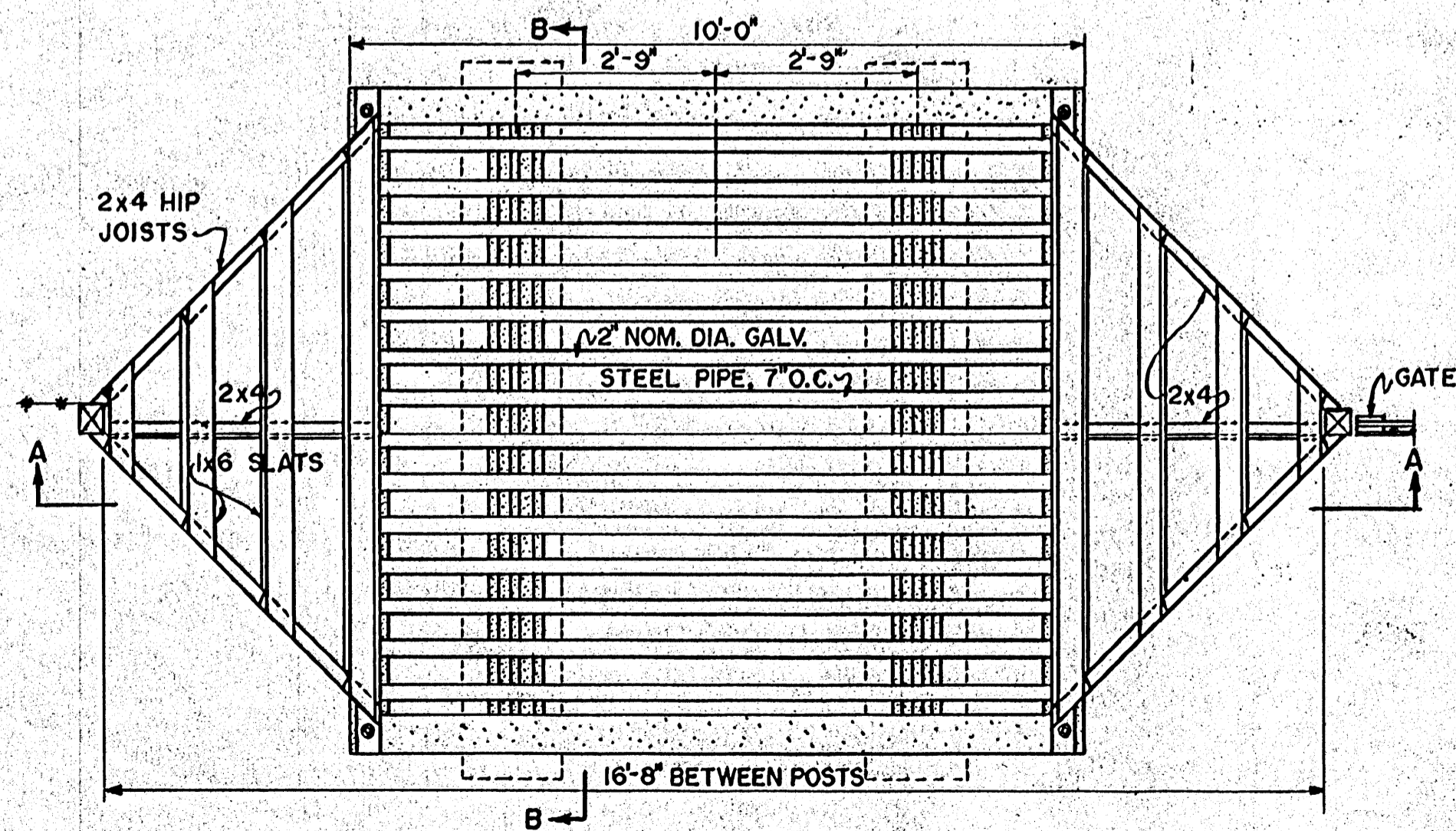


SECTION A-A



SECTION B-B



PLAN

**BILL OF MATERIALS
CONCRETE AND STEEL**

- LUMBER**
- FRAMING: 1-PCS 2x4x12'-0"
 - 2- " 2x4x14'-0"
 - SLATS: 6- " 1x6x12'-0"
 - GUARD RAILS: 2- " 4x6x9'-0"
- CONCRETE:** 2 3/4 CU. YDS. (1:3:5 MIXTURE)
- CEMENT:** 13 SACKS
- SAND:** 1.4 CU. YDS.
- AGGREGATE:** 2.35 CU. YDS.
- MISCELLANEOUS**
- PIPES: 14-PCS, 2" NOM. DIA. EXTRA STRONG GALV. STEEL PIPE OR RAILS 10'-0" LONG
 - ANCHOR BOLTS: 6- 1/2" x 16"
 - REINF. RODS: 4- 1/2" x 9'-0"

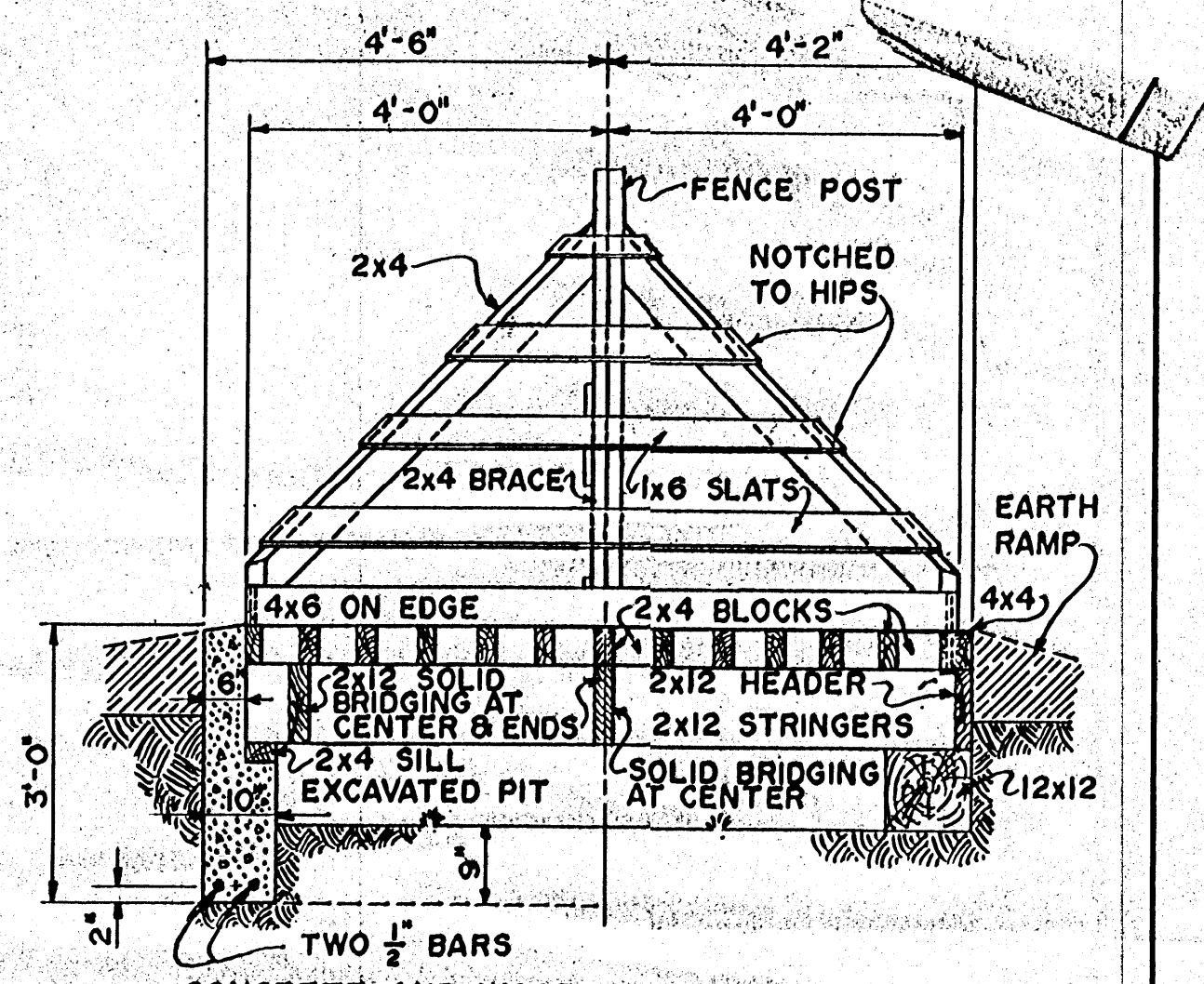
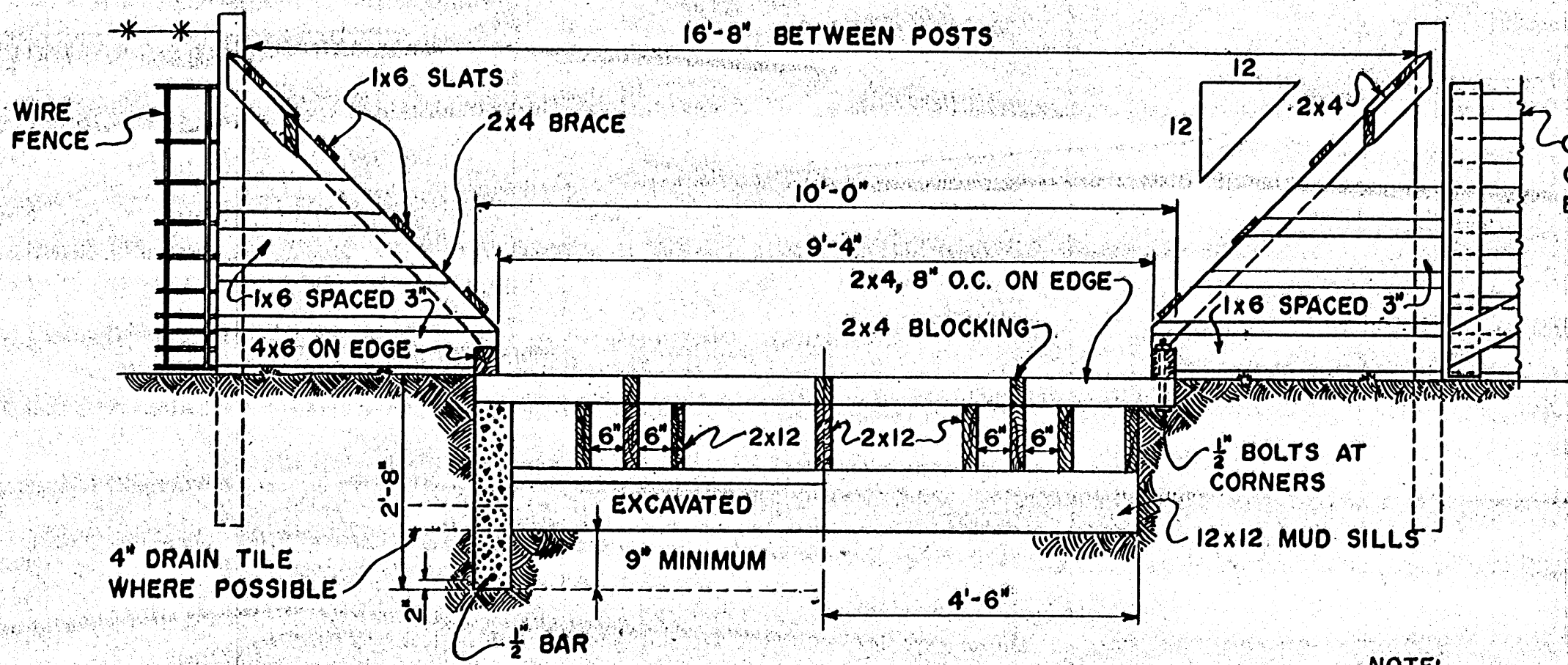
NOTE: A WIDE GATE ADJACENT TO GUARD IS SUGGESTED FOR PASSAGE OF EXTRA WIDE EQUIPMENT AND LIVESTOCK. ALL WOOD TO BE TREATED WITH PRESERVATIVE.

COOPERATIVE EXTENSION WORK IN
AGRICULTURE AND HOME ECONOMICS
STATE OF MISSISSIPPI
MISSISSIPPI STATE UNIVERSITY
AND
UNITED STATES DEPARTMENT OF AGRICULTURE COOPERATING

CATTLE GUARDS

USDA '68 EX. 6051 SHEET 1 OF 2

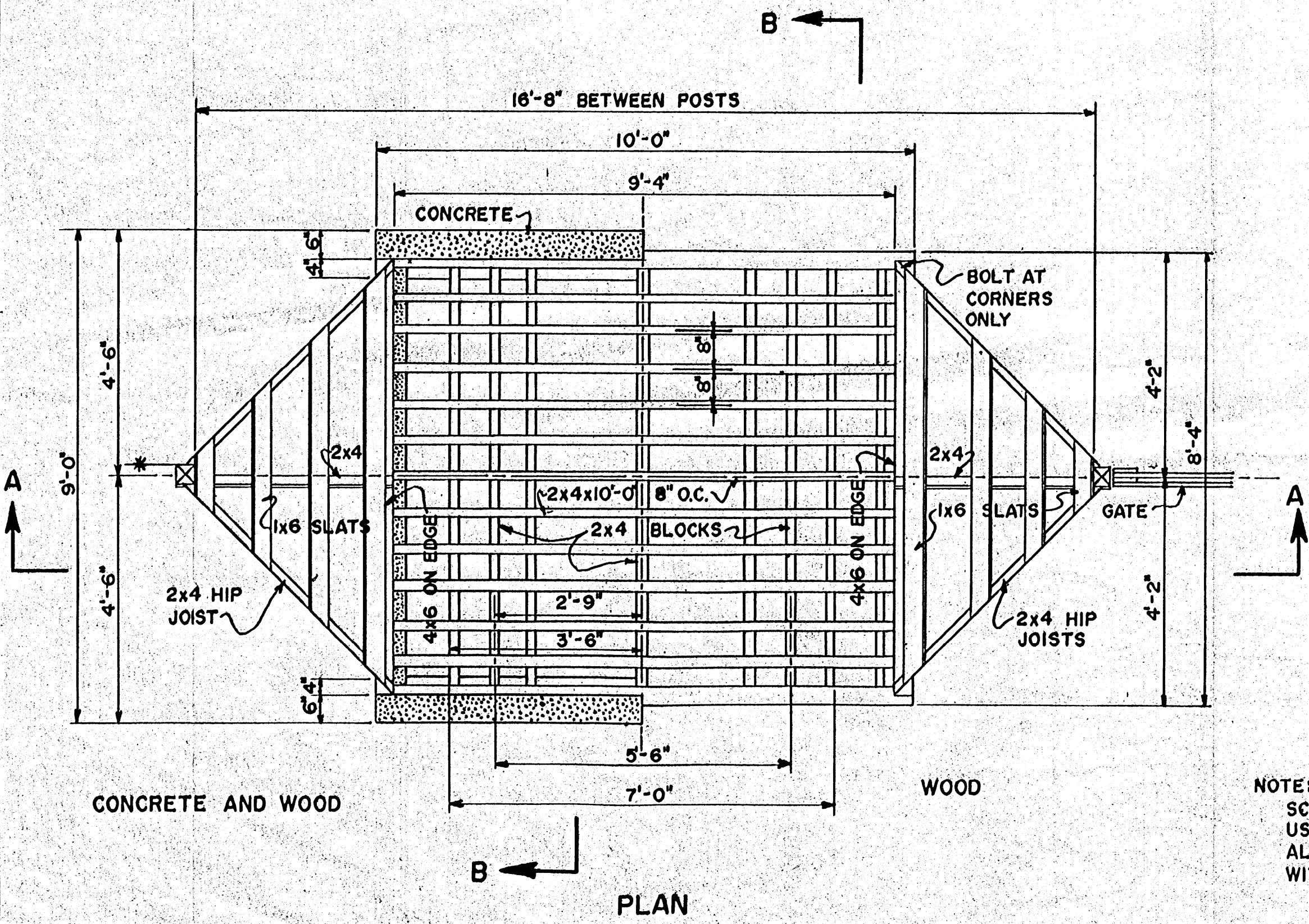
SCALE: 1/2" = 1'-0"



NOTE:
SECTION A-A SHOWS GUARD FLOOR
BUILT LEVEL WITH GRADE.
SECTION B-B SHOWS GUARD FLOOR
RAISED ABOVE GRADE.

BILLS OF MATERIAL

CONCRETE AND WOOD		WOOD	
LUMBER			
FENCE POSTS:	2-PCS 4x4x7'-0"	FENCE POSTS:	2-PCS 4x4x7'-0"
FRAMING:	3-PCS 2x12x10'-0"	FRAMING:	2-PCS 12x12x9'-0"
	7-PCS 2x12x8'-0"		2-PCS 4x4x10'-0"
	13-PCS 2x4x10'-0"		3-PCS 2x12x10'-0"
	2-PCS 2x4x9'-0"		9-PCS 2x12x8'-0"
	3-PCS 2x4x8'-0"		11-PCS 2x4x10'-0"
	6-PCS 2x4x6'-0"		3-PCS 2x4x8'-0"
	9-PCS 1x6x8'-0"		6-PCS 2x4x6'-0"
SLATS:		SLATS:	9-PCS 1x6x8'-0"
GUARD RAILS:	2-PCS 4x6x8'-0"	GUARD RAILS:	2-PCS 4x6x8'-0"
CONCRETE	2 1/2 CU. YDS. (1:3:5 MIXTURE)	MISCELLANEOUS	
CEMENT:	12 SACKS	ANCHOR BOLTS:	FOUR 1/2"x12" GALV.
SAND:	1.25 CU. YDS.		
AGGREGATE:	2.13 CU. YDS.		
MISCELLANEOUS			
ANCHOR BOLTS:	FOUR 1/2"x12" GALV.		
REINF. RODS:	FOUR 1/2"x9'-9"		
	TWO 1/2"x8'-9"		



NOTE:
SCALE: 1/2" = 1'-0"
USE ROUGH-SAWN LUMBER.
ALL WOOD IS TO BE PRESSURE-TREATED
WITH PRESERVATIVE.

COOPERATIVE EXTENSION WORK IN
AGRICULTURE AND HOME ECONOMICS
STATE OF MISSISSIPPI
MISSISSIPPI STATE UNIVERSITY
AND
UNITED STATES DEPARTMENT OF AGRICULTURE COOPERATING

CATTLE GUARDS

USDA '68 EX. 6051 SHEET 2 OF 2