

**PLAN**

SCALE: 1/4" = 1'-0"

**VENTILATION NOTE:**

4-4100-4400 CFM FANS REQUIRED 18'-0" O.C.  
 FANS 2 AND 4 SET TIMER ON 2 MINUTES OUT OF 10 AND SET THERMOSTATS 50°F.  
 FAN 1 SET THERMOSTAT ON 65°F.  
 FAN 3 SET THERMOSTAT ON 80°F.

**NOTE:**

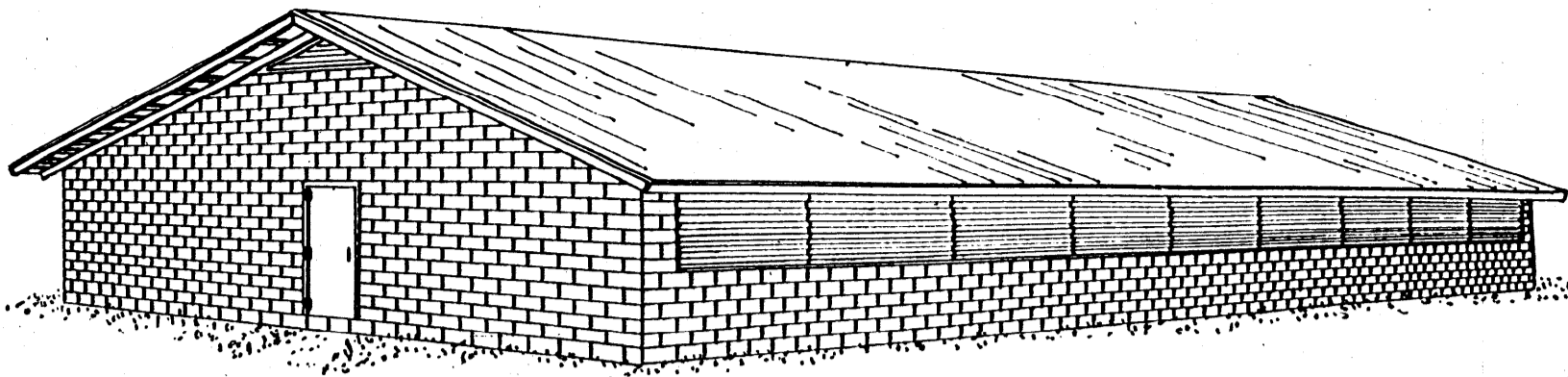
PENS CAN BE USED AS EMPTIED FOR ANY GROUP OF PIGS.

**NOTE:**

CONSULT LOCAL HEALTH AUTHORITIES BEFORE STARTING CONSTRUCTION TO BE SURE THAT THE PLAN CONFORMS WITH LOCAL CODES AND REGULATIONS

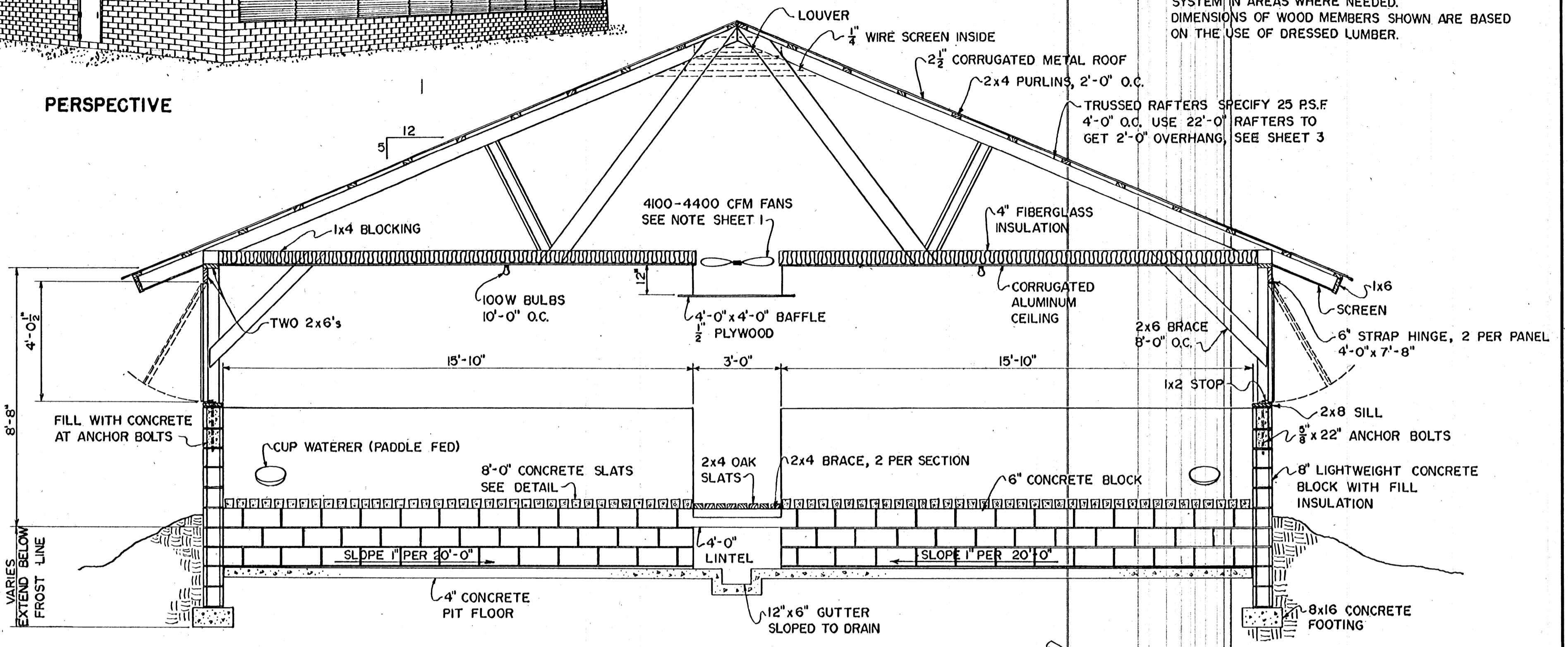
V.P.I. PLAN G113

COOPERATIVE EXTENSION WORK IN AGRICULTURE AND HOME ECONOMICS		
STATE OF MISSISSIPPI		
MISSISSIPPI STATE UNIVERSITY		
UNITED STATES DEPARTMENT OF AGRICULTURE COOPERATING		
<b>FINISHING FLOOR FOR 400 PIGS</b>		
VA. '70	6104	SHEET 1 OF 3



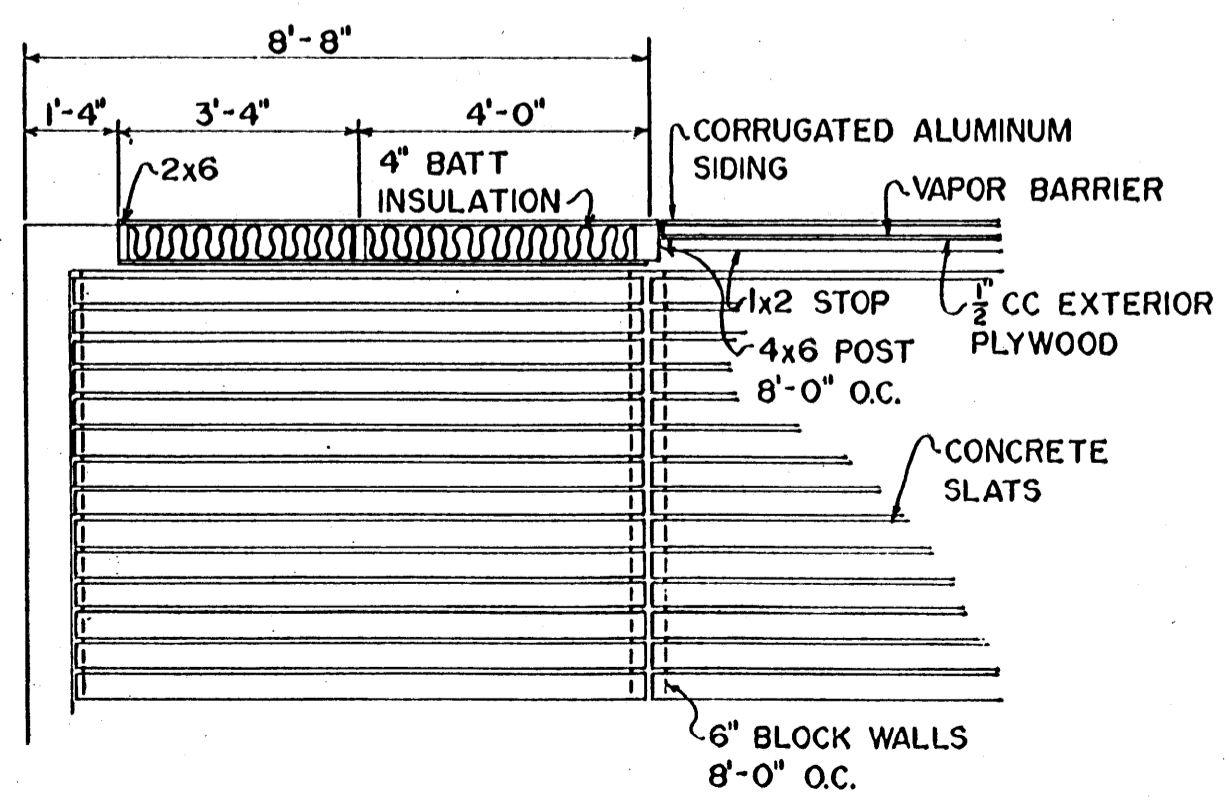
PERSPECTIVE

NOTE: WALLS & FOOTINGS MUST BE DEEP ENOUGH TO BEAR ON SOLID GROUND BELOW FROST LINE. THE 2 1/2" CORRUGATED METAL ROOFING IS APPLIED TO 2x4 PURLINS SPACED NOT OVER 24" O.C. OR AS SPECIFIED BY THE MANUFACTURER. EQUIP METAL COVERED BUILDINGS WITH ADEQUATE LIGHTNING PROTECTION SYSTEM IN AREAS WHERE NEEDED. DIMENSIONS OF WOOD MEMBERS SHOWN ARE BASED ON THE USE OF DRESSED LUMBER.



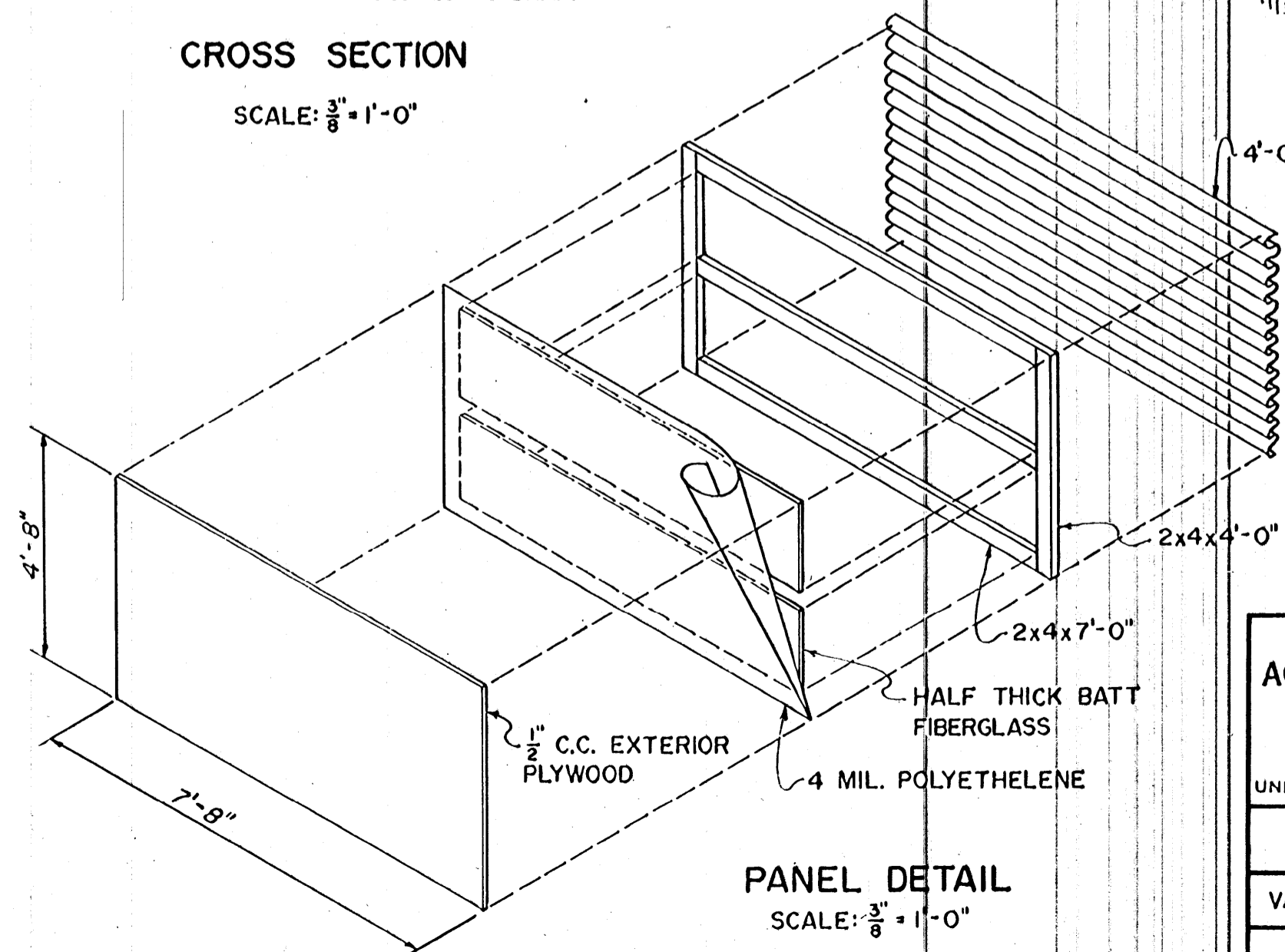
CROSS SECTION

SCALE: 3/8" = 1'-0"



CORNER BRACING

SCALE: 3/8" = 1'-0"



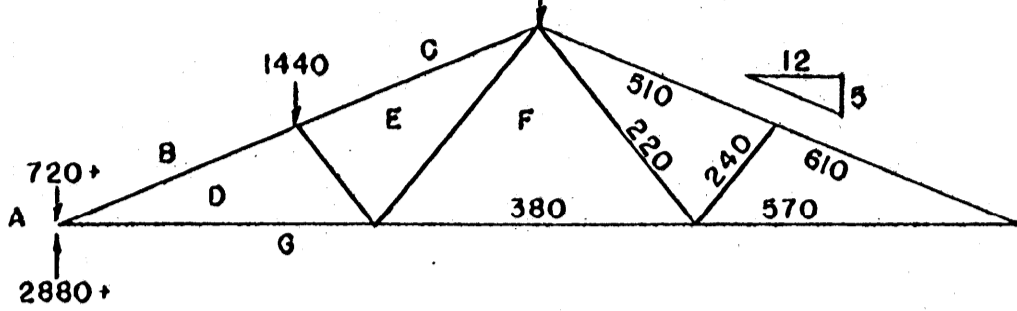
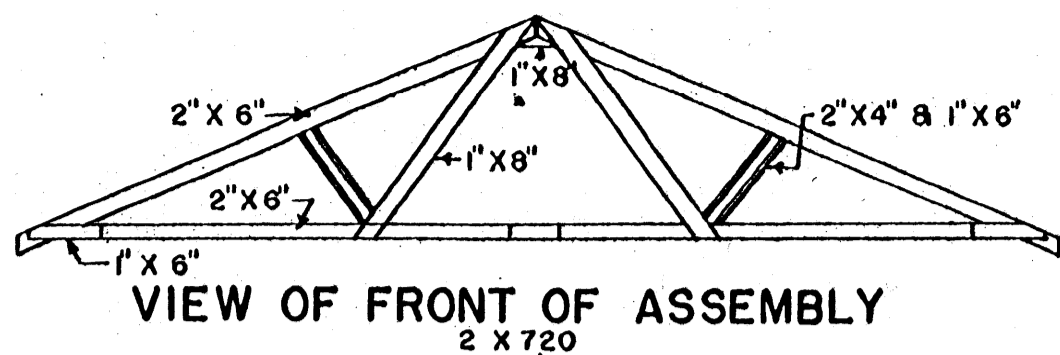
PANEL DETAIL

SCALE: 3/8" = 1'-0"

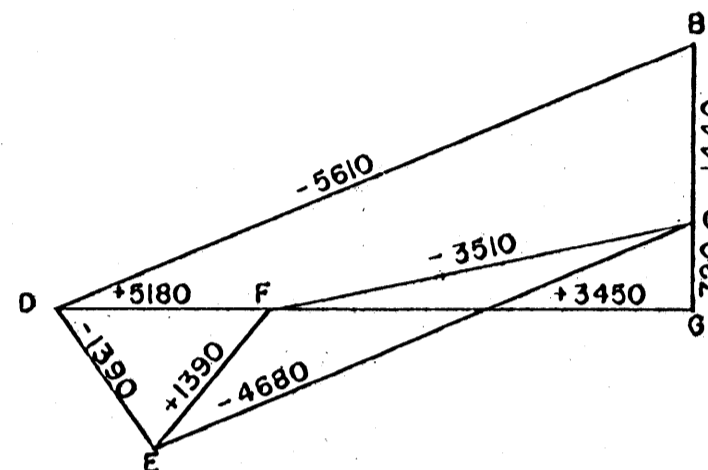
COOPERATIVE EXTENSION WORK IN  
AGRICULTURE AND HOME ECONOMICS  
STATE OF MISSISSIPPI  
MISSISSIPPI STATE UNIVERSITY  
AND  
UNITED STATES DEPARTMENT OF AGRICULTURE COOPERATING

FINISHING FLOOR  
FOR 400 PIGS

VA. '70 6104 SHEET 2 OF 3



LOAD AND STRESS DIAGRAMS

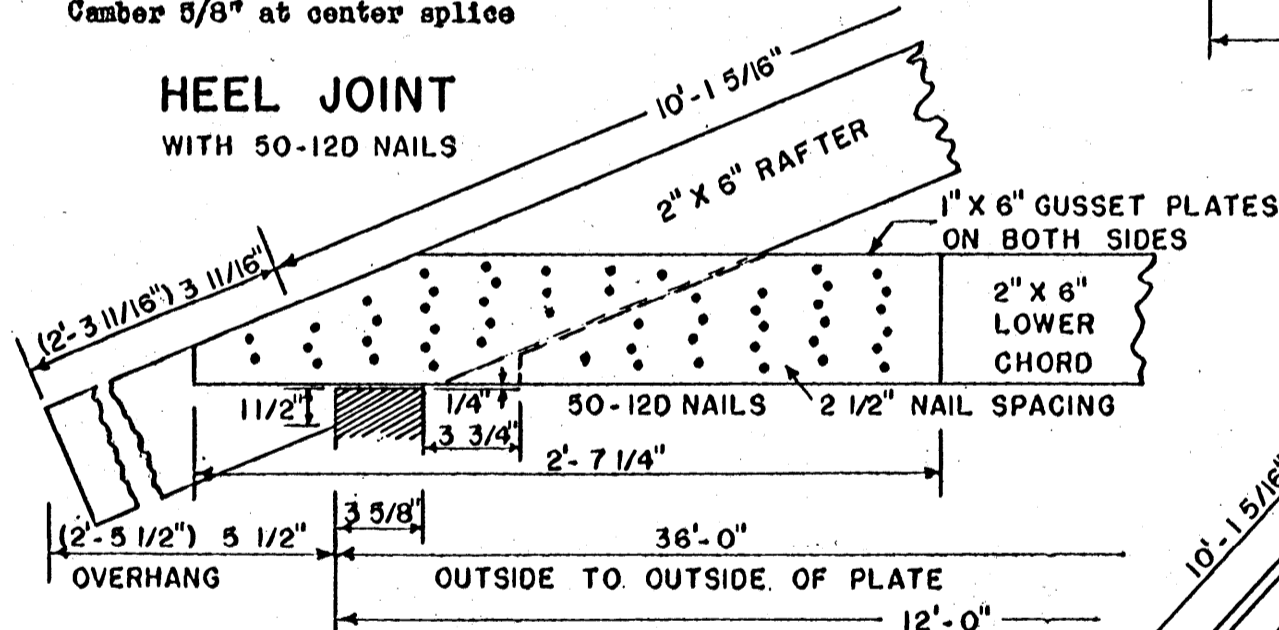


Dead load & live load on roof: 40 lb/sq. ft.  
Trussed rafters spaced 4'-0" on centers  
Lumber No. 1 Southern Pine or Douglas Fir

c - 1350 psi. compression parallel to grain  
f - 1500 psi. modulus of rupture  
E - 1760000 psi. modulus of elasticity

Camber 5/8" at center splice

HEEL JOINT  
WITH 50-12D NAILS



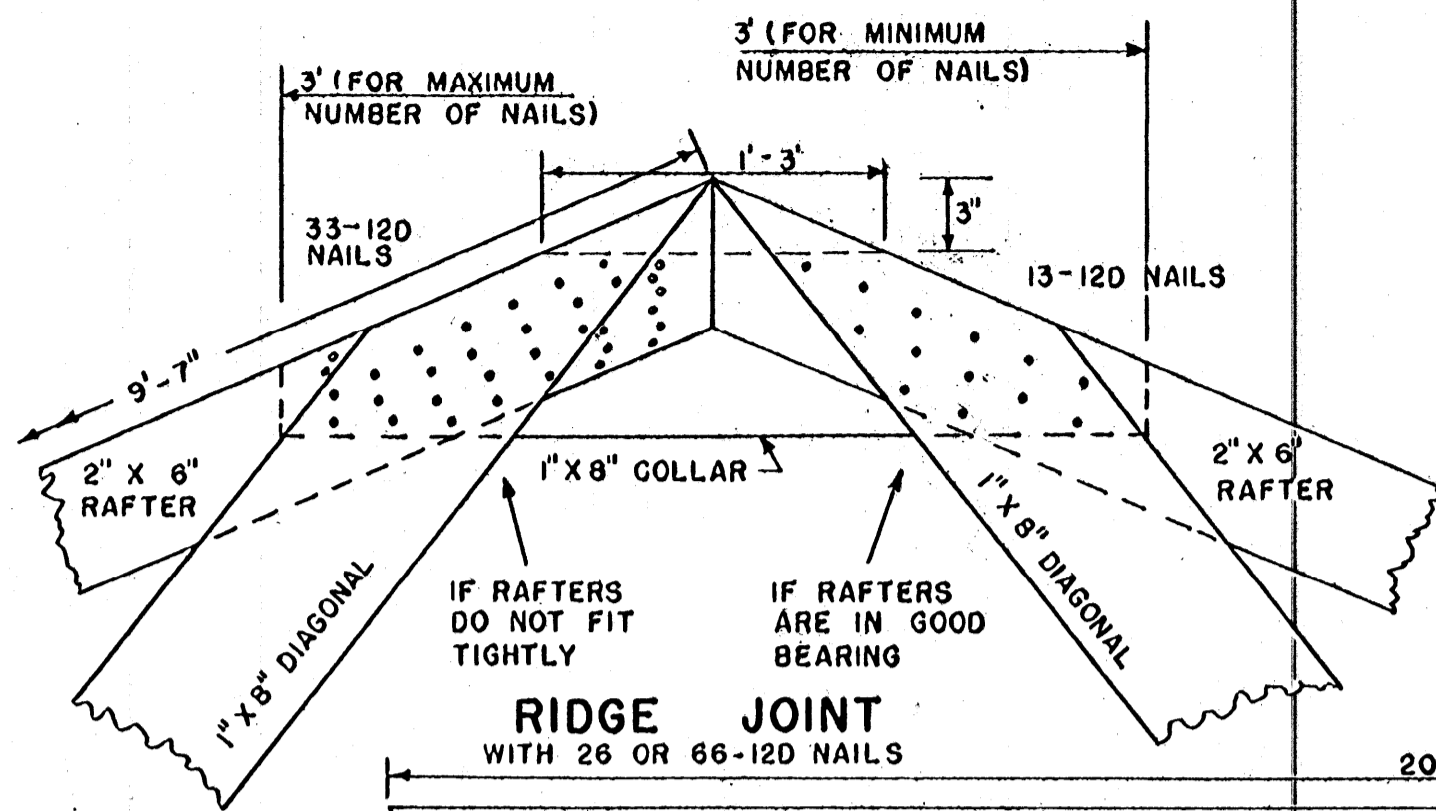
NOTES

Use helically threaded Screwite or equivalent nails, for permanently tight joints throughout structure.

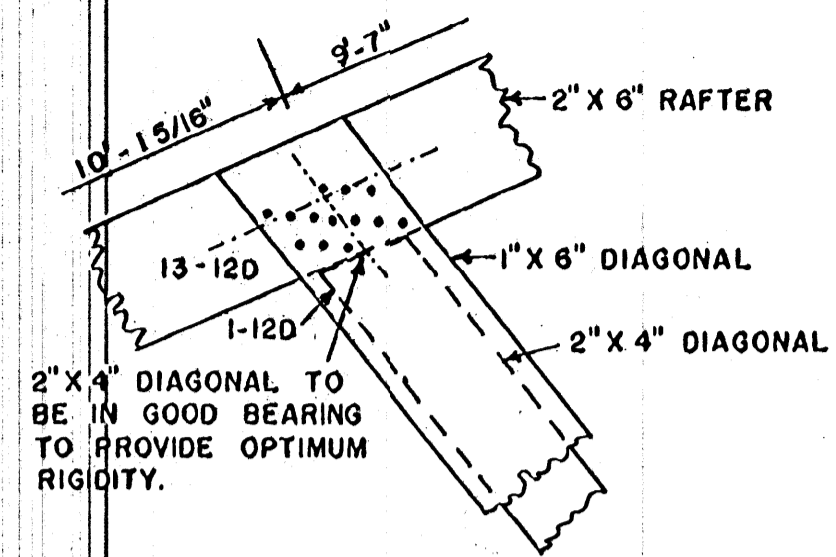
Use hardened nails in dry southern pine.

Drive all nails from front except those shown as (o).

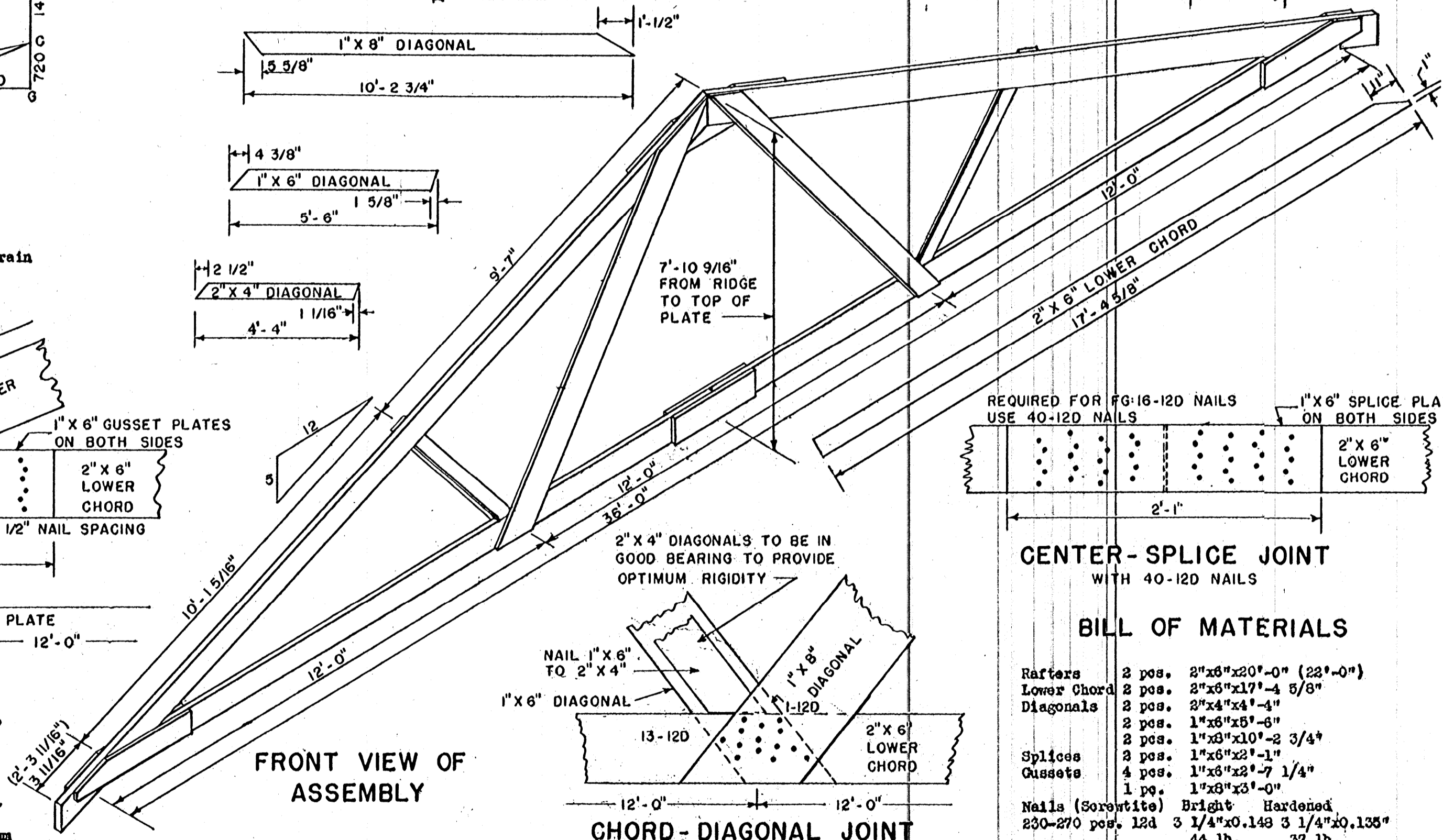
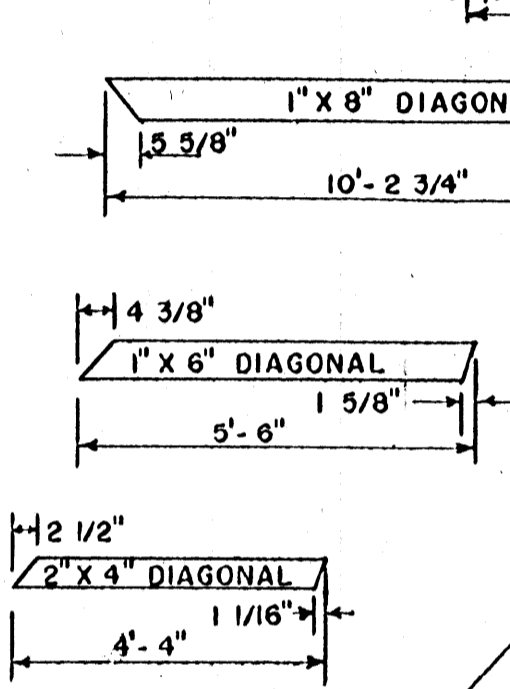
Use templates for locating all nails to assure maximum efficiency and effectiveness.



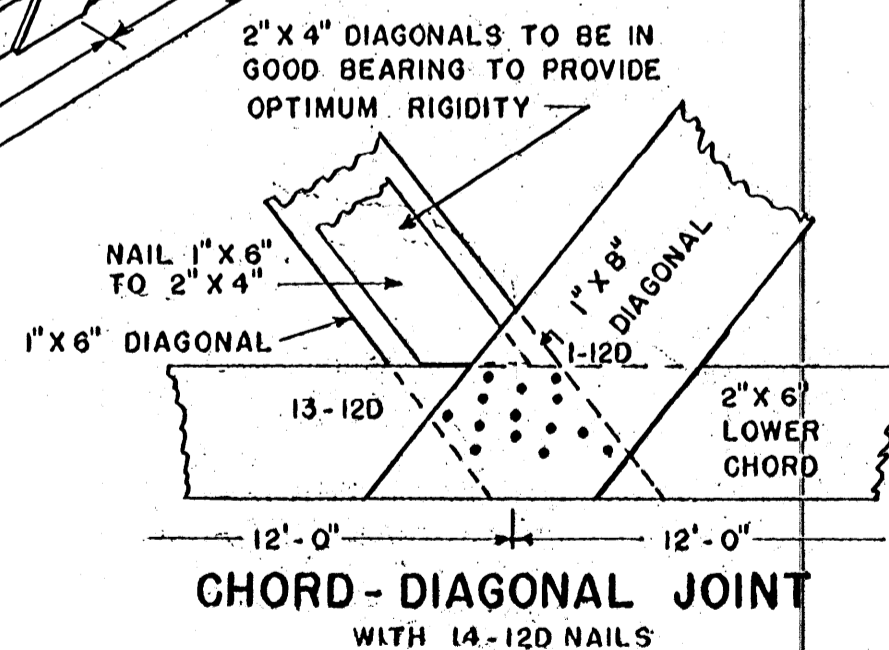
RIDGE JOINT  
WITH 26 OR 66-12D NAILS



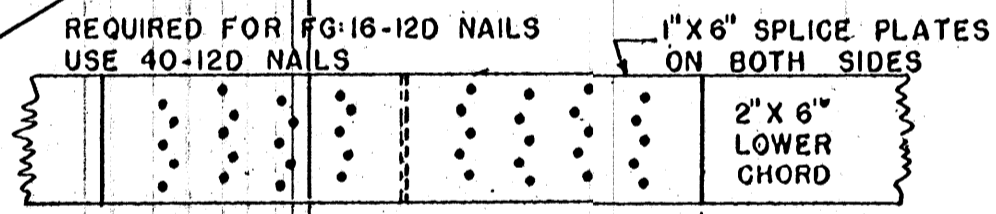
RAFTER-DIAGONAL JOINT  
WITH 14-12D NAILS



FRONT VIEW OF ASSEMBLY



CHORD-DIAGONAL JOINT  
WITH 14-12D NAILS



CENTER-SPLICE JOINT  
WITH 40-12D NAILS

BILL OF MATERIALS

Rafters	2 pos.	2"x6"x20'-0" (22'-0")
Lower Chord	2 pos.	2"x6"x17'-4 5/8"
Diagonals	2 pos.	2"x4"x4'-4"
	2 pos.	1"x6"x5'-8"
	2 pos.	1"x8"x10'-2 3/4"
Splices	2 pos.	1"x6"x2'-1"
Gussets	4 pos.	1"x6"x2'-7 1/4"
	1 pos.	1"x8"x3'-0"
Nails (Screwite)	Bright	Hardened
	230-270 pos.	12d 3 1/4"x0.148 3 1/4"x0.135"
		44 lb. 37 lb.

COOPERATIVE EXTENSION WORK IN  
AGRICULTURE AND HOME ECONOMICS  
STATE OF MISSISSIPPI  
MISSISSIPPI STATE UNIVERSITY  
UNITED STATES DEPARTMENT OF AGRICULTURE COOPERATING

**FINISHING FLOOR  
FOR 400 PIGS**

VA.	'70	6104	SHEET 3 OF 3
-----	-----	------	--------------