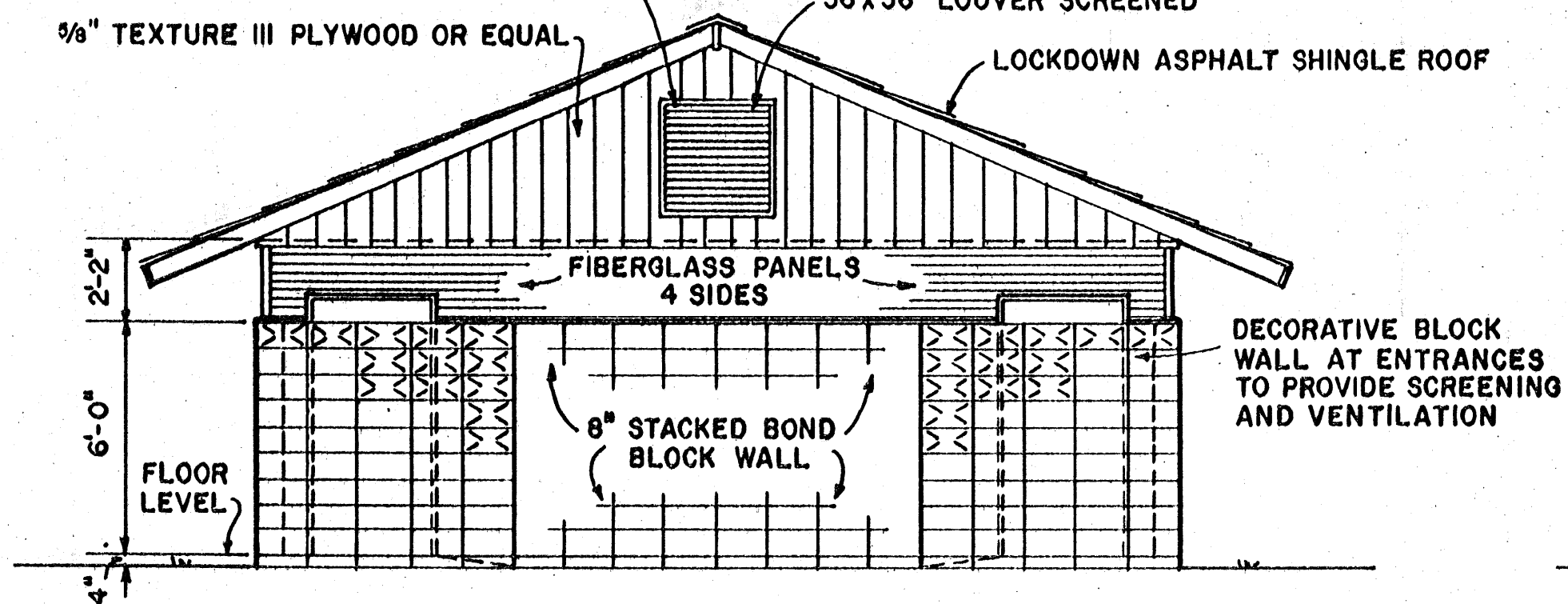
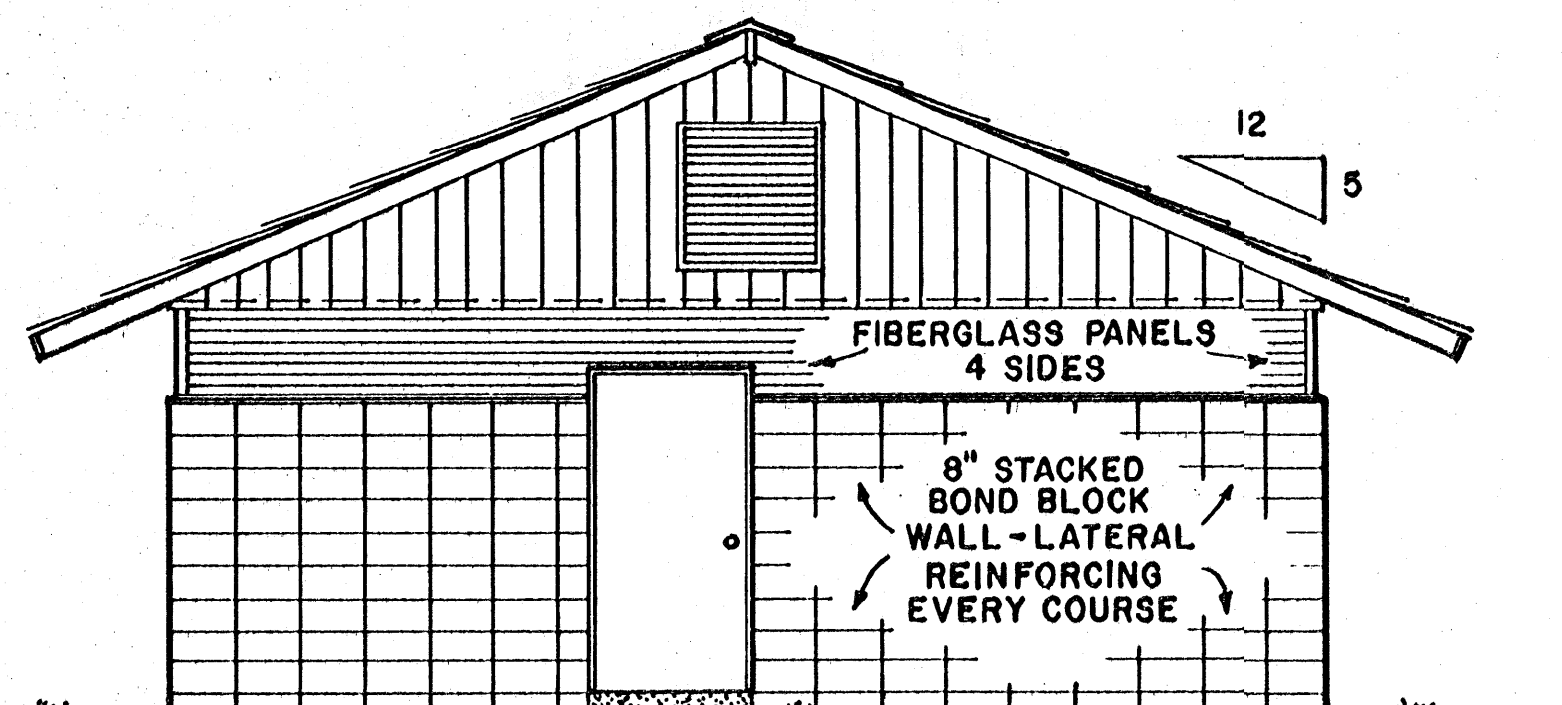


2 SPEED 3600 CFM FAN OPPOSITE END  
 5/8" TEXTURE III PLYWOOD OR EQUAL  
 36" x 36" LOUVER SCREENED  
 LOCKDOWN ASPHALT SHINGLE ROOF

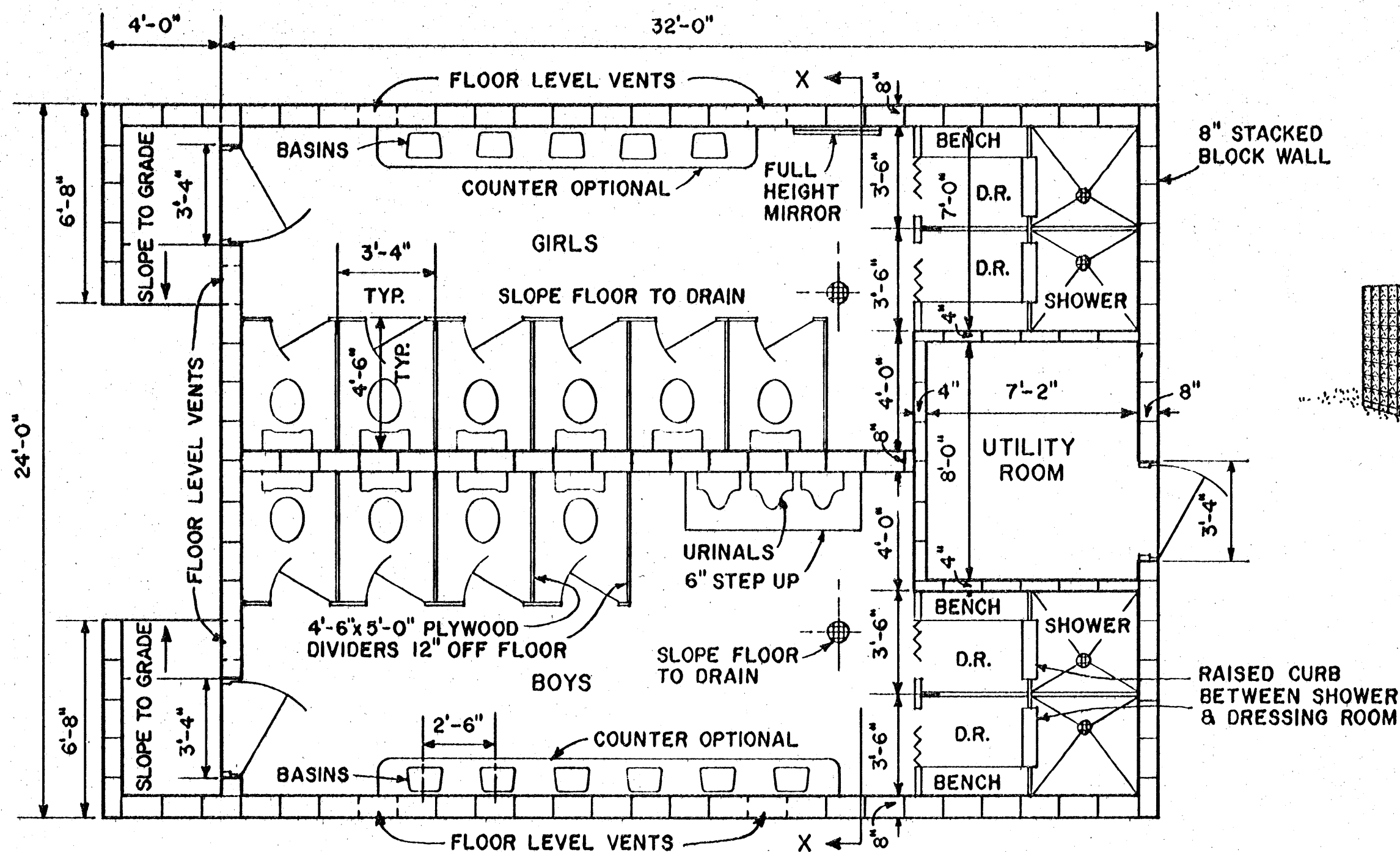


**FRONT ELEVATION**  
 SCALE: 1/4"=1'-0"

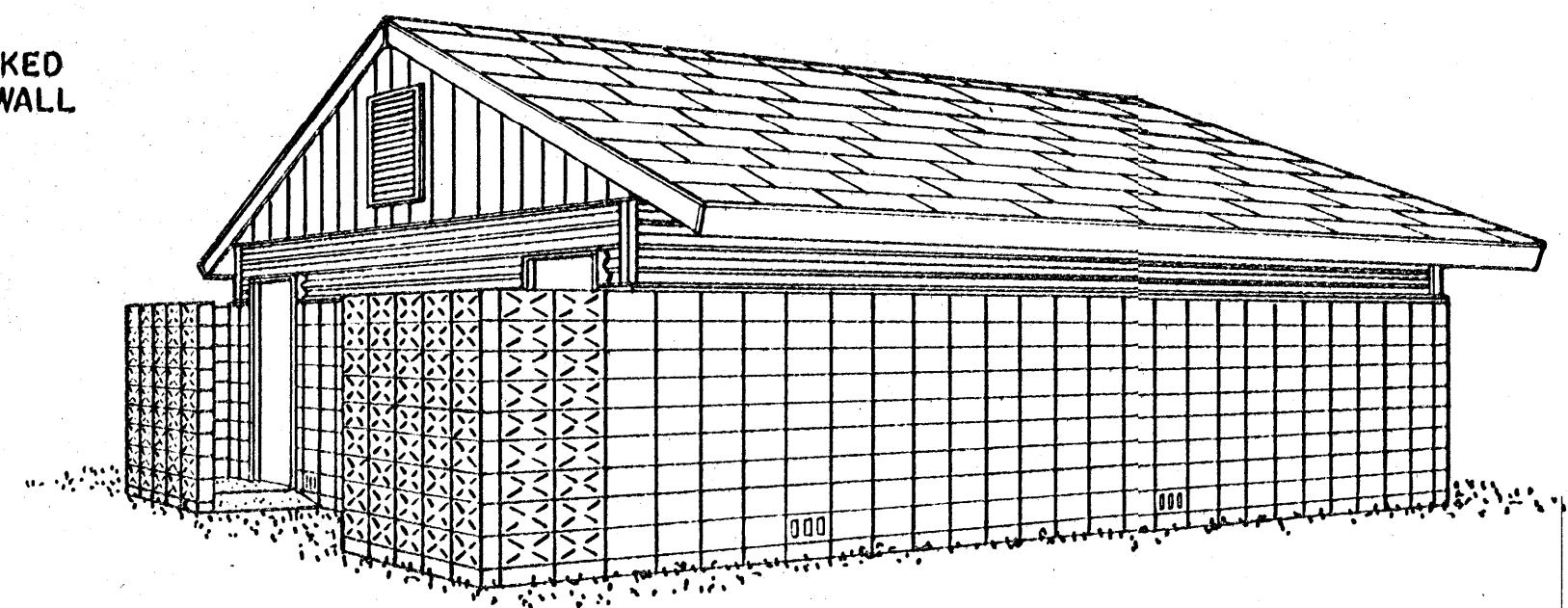
**FINISH**  
 INTERIOR - FINISH BLOCKS WITH  
 COATING OF EPOXY PAINT  
 EXTERIOR - (IF DESIRED) CEMENT  
 WATER PAINT



**REAR ELEVATION**  
 SCALE: 1/4"=1'-0"



**PLAN**  
 SCALE: 1/4"=1'-0"



**PERSPECTIVE**

FACILITIES FOR 50 CAMPSITES

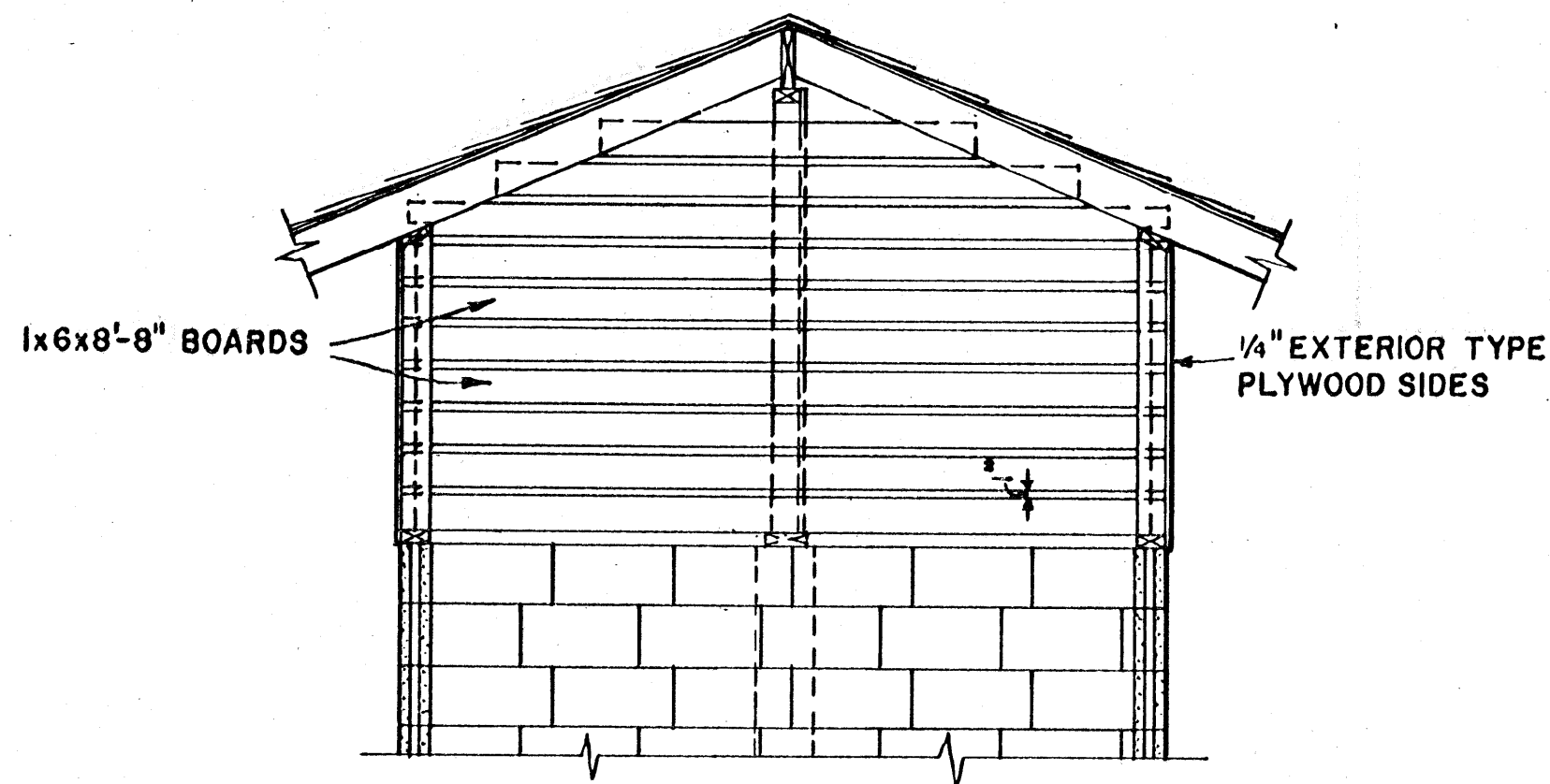
CONSULT STATE AND LOCAL AUTHORITIES  
 BEFORE STARTING CONSTRUCTION

COOPERATIVE EXTENSION WORK IN  
 AGRICULTURE AND HOME ECONOMICS  
 STATE OF MISSISSIPPI  
 MISSISSIPPI STATE UNIVERSITY  
 AND  
 UNITED STATES DEPARTMENT OF AGRICULTURE COOPERATING

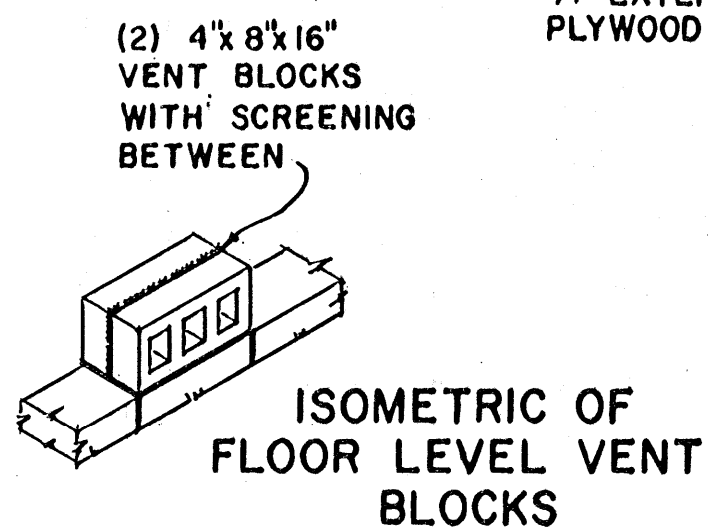
**COMFORT STATION**

N.J. '71 6123 SHEET 1 OF 3

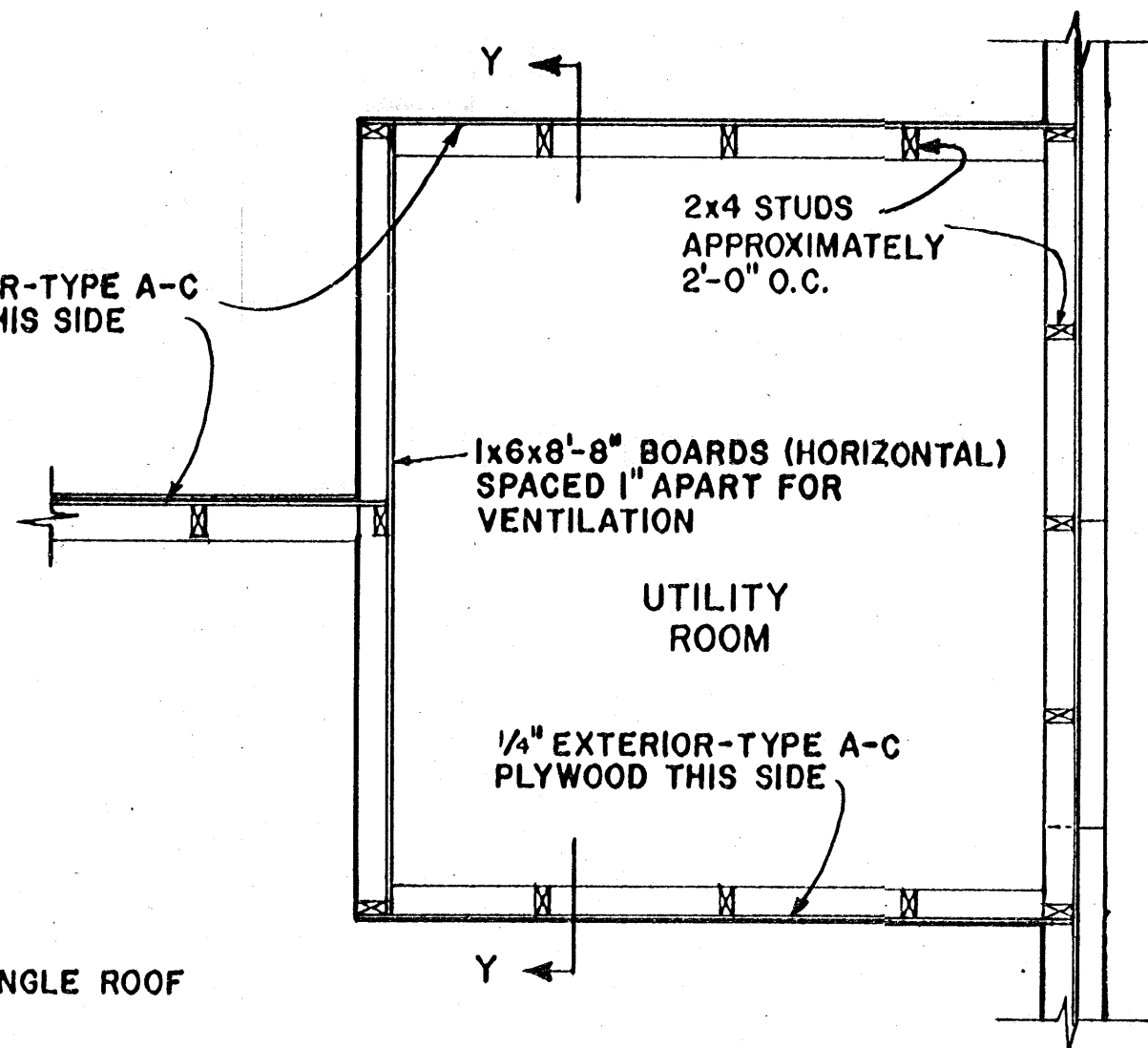
BASED ON: RUTGERS - THE STATE UNIVERSITY  
 NEW JERSEY PLAN NO. 149



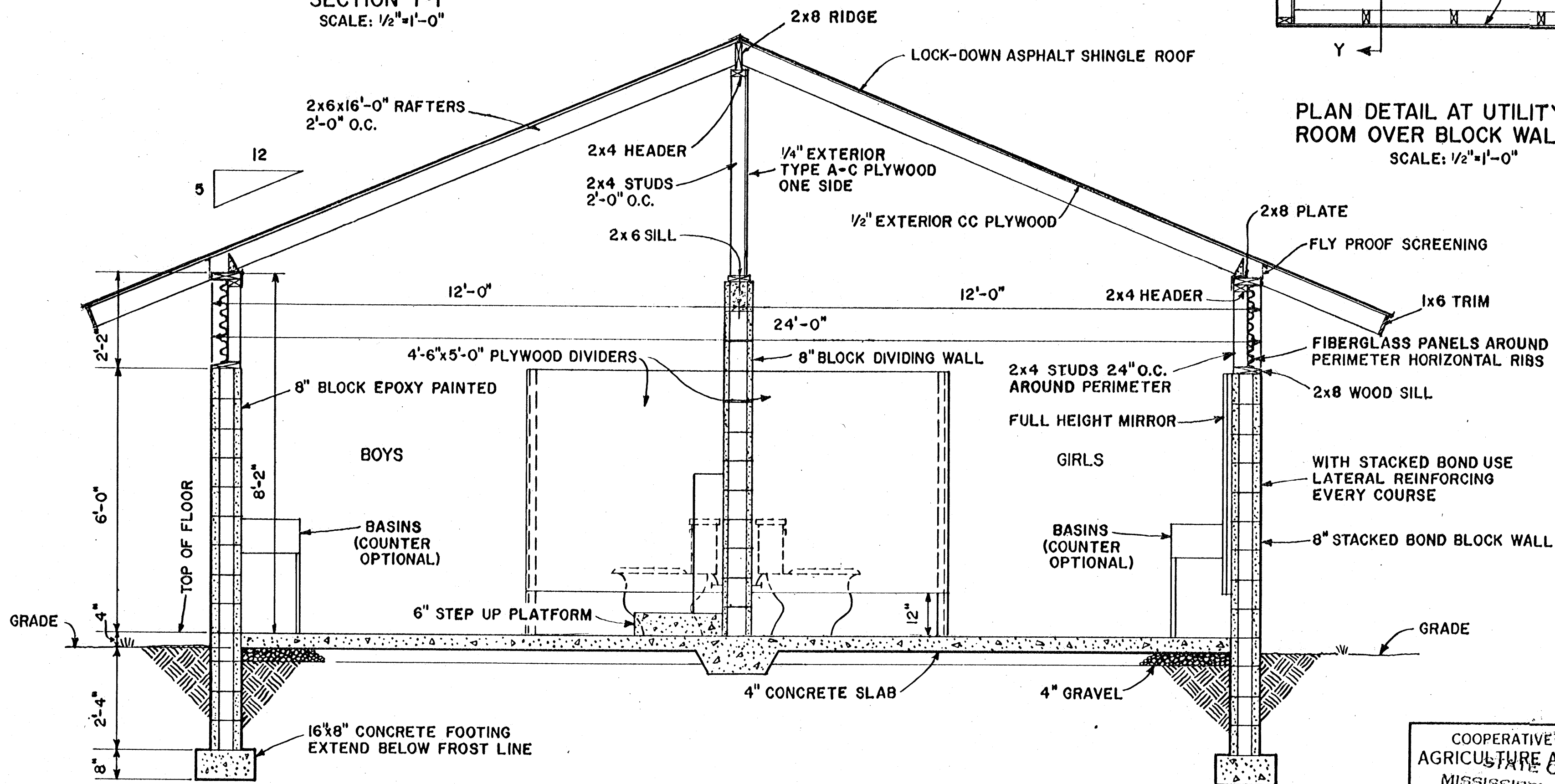
SECTION Y-Y  
SCALE: 1/2"=1'-0"



1/4" EXTERIOR-TYPE A-C PLYWOOD THIS SIDE



PLAN DETAIL AT UTILITY ROOM OVER BLOCK WALL  
SCALE: 1/2"=1'-0"

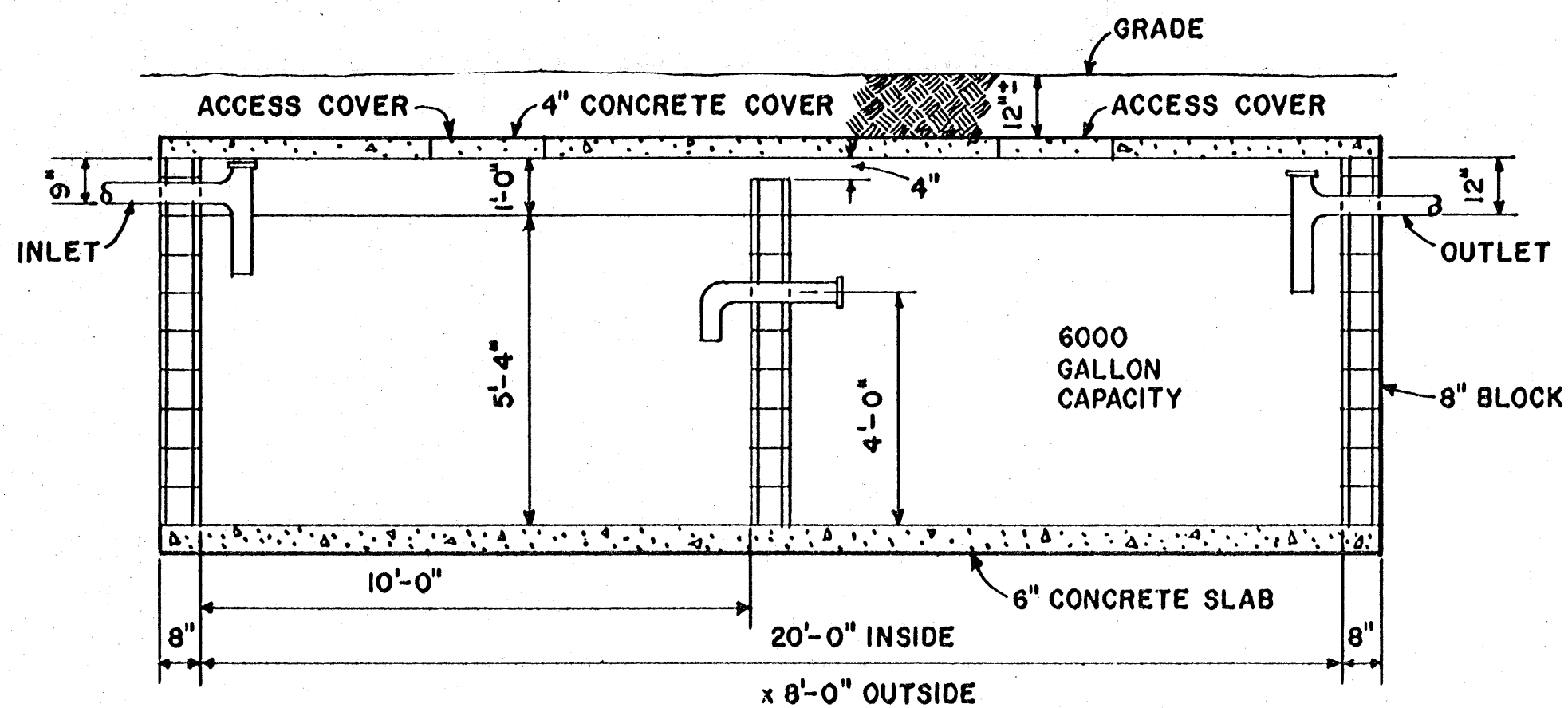


SECTION X-X  
SCALE: 1/2"=1'-0"

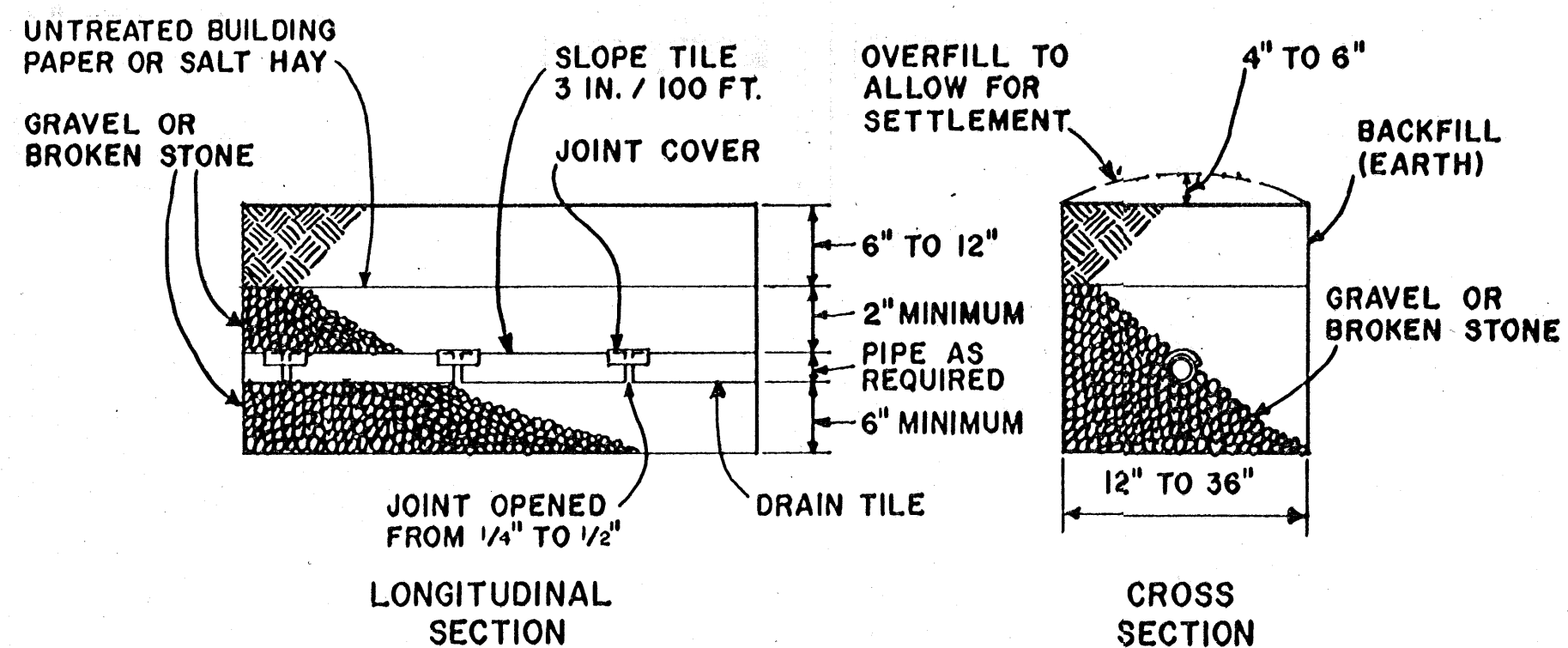
COOPERATIVE EXTENSION WORK IN  
AGRICULTURE AND HOME ECONOMICS  
STATE OF MISSISSIPPI  
MISSISSIPPI STATE UNIVERSITY  
AND  
UNITED STATES DEPARTMENT OF AGRICULTURE COOPERATING

COMFORT STATION

N.J. '71 6123 SHEET 2 OF 3



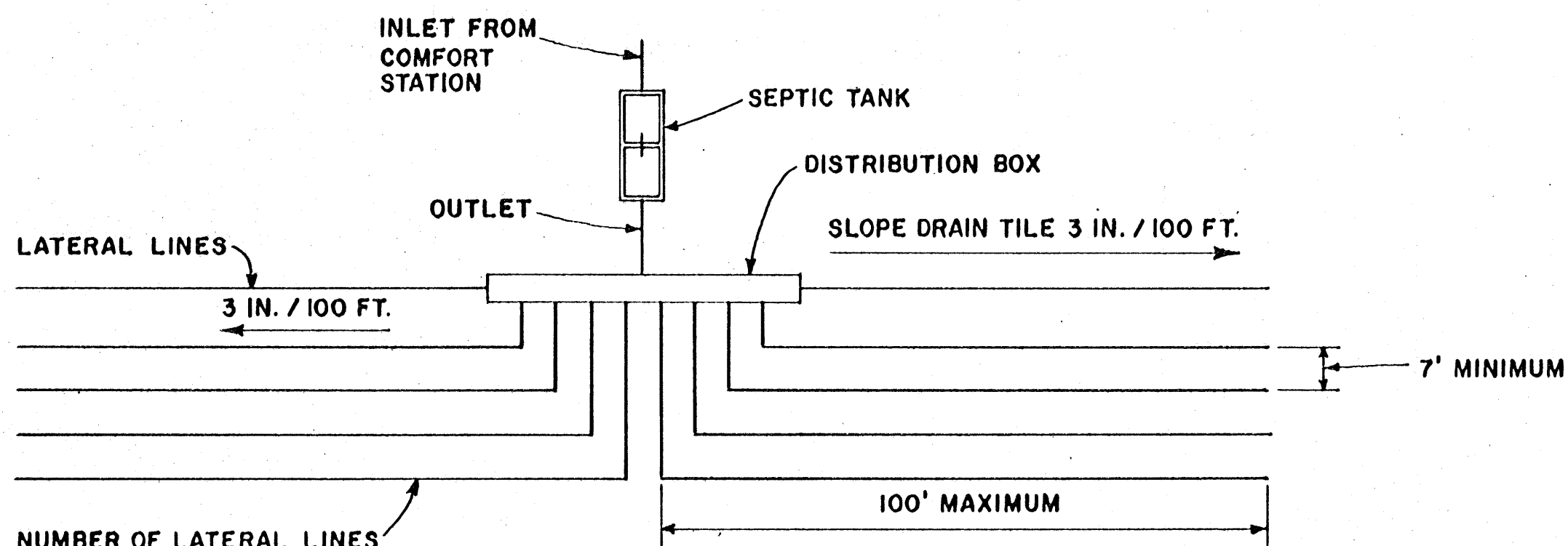
SEPTIC TANK LONGITUDINAL SECTION  
SCALE:  $\frac{3}{8}$ " = 1'-0"



DETAIL OF DRAIN TILE AT ABSORPTION FIELD  
SCALE:  $\frac{1}{2}$ " = 1'-0"

**50 CAMPSITES**

- 4 PERSONS PER CAMPSITE
- 35 GALLONS WATER PER PERSON PER DAY
- 6000 GALLON SEPTIC TANK REQUIRED MINIMUM
- DRAINAGE FIELD SIZE DETERMINED BY PERCOLATION TEST - SEE AGRICULTURAL INFORMATION BULLETIN # 274 "FARMSTEAD SEWAGE AND REFUSE DISPOSAL"
- 7000 GALLON/DAY WATER REQUIREMENT
- 40 GPM PUMP CAPACITY AT 25-45 POUNDS PRESSURE
- 4 SHOWERS AT 5 GPM = 20
- 11 BASINS AT 4 GPM = 44
- 3 URINALS AT 5 GPM = 15
- 10 WATER CLOSETS AT 3 GPM = 30
- TOTAL - 109 GPM
- ASSUME WORST CONDITION OF 4 SHOWERS, 2 BASINS, 1 URINAL, 2 WATER CLOSETS RUNNING AT ONE TIME OR 40 GPM AT 40 PSI
- 60 GALLON HOT WATER HEATER REQUIRED GAS FIRED OR EQUIVALENT.



NUMBER OF LATERAL LINES TO BE DETERMINED BY PERCOLATION TESTS AND LOCAL HEALTH AUTHORITIES

PLAN OF ABSORPTION FIELD SYSTEM  
NO SCALE

COOPERATIVE EXTENSION WORK IN  
AGRICULTURE AND HOME ECONOMICS  
STATE OF MISSISSIPPI  
MISSISSIPPI STATE UNIVERSITY  
AND  
UNITED STATES DEPARTMENT OF AGRICULTURE COOPERATING

**COMFORT STATION**