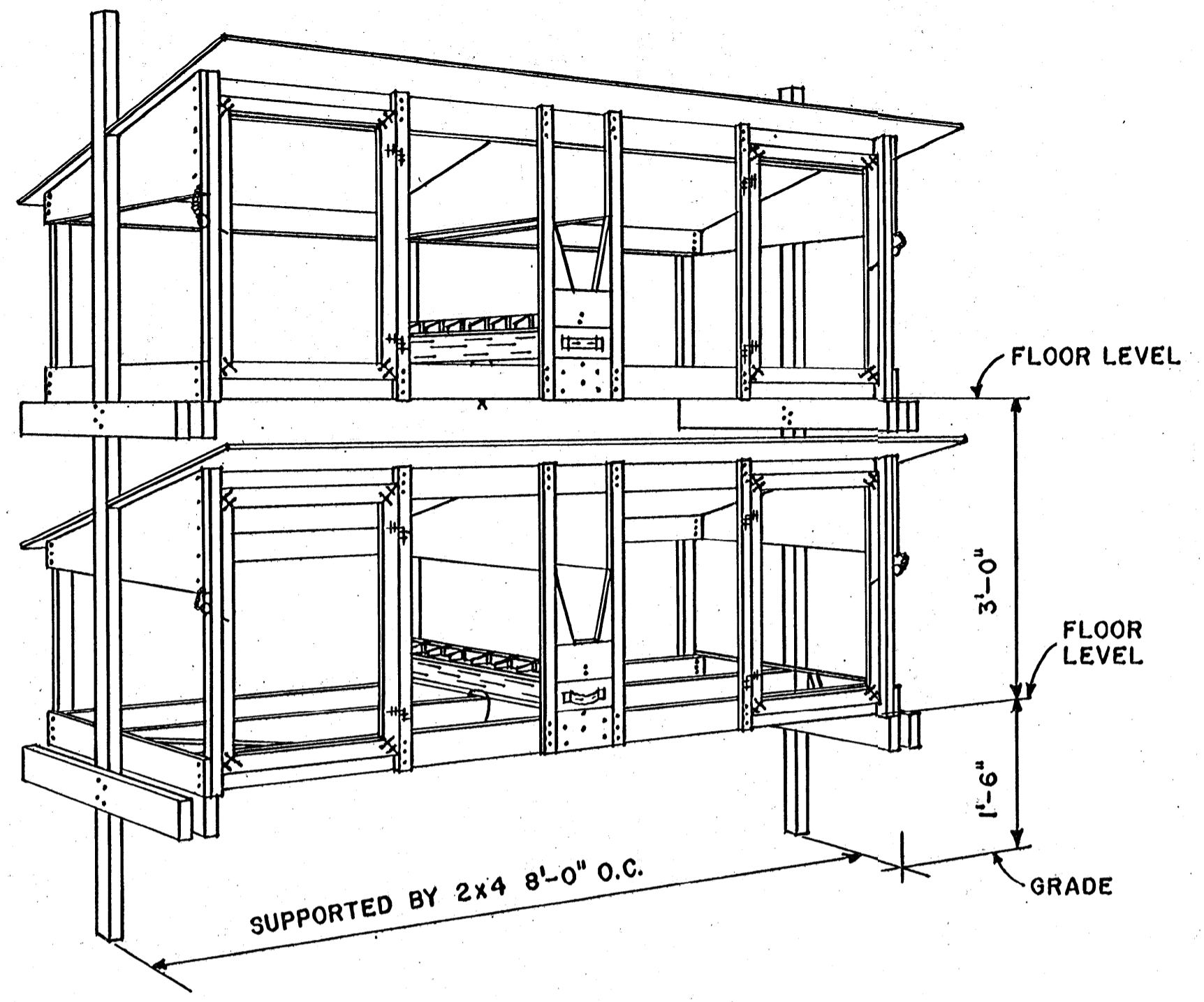
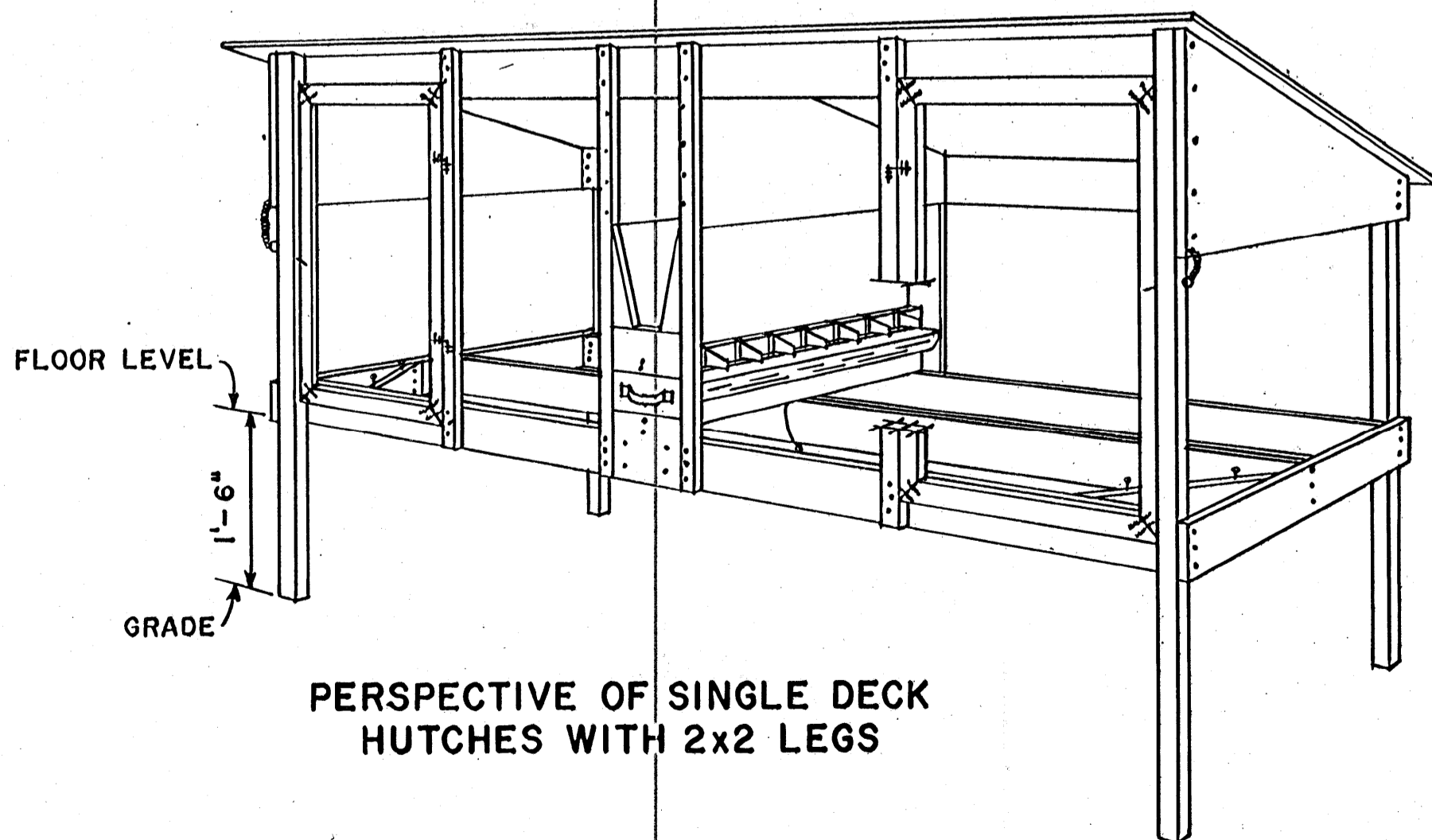


PERSPECTIVE OF DOUBLE DECK HUTCHES WITH 2x2 LEGS



PERSPECTIVE OF DOUBLE DECK HUTCHES HUNG ON 2x4 POSTS 8'-0" O.C.

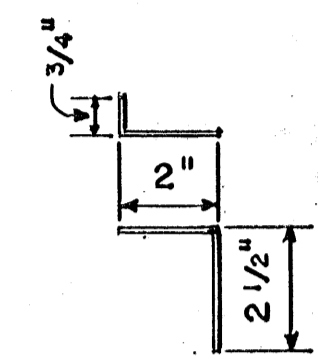
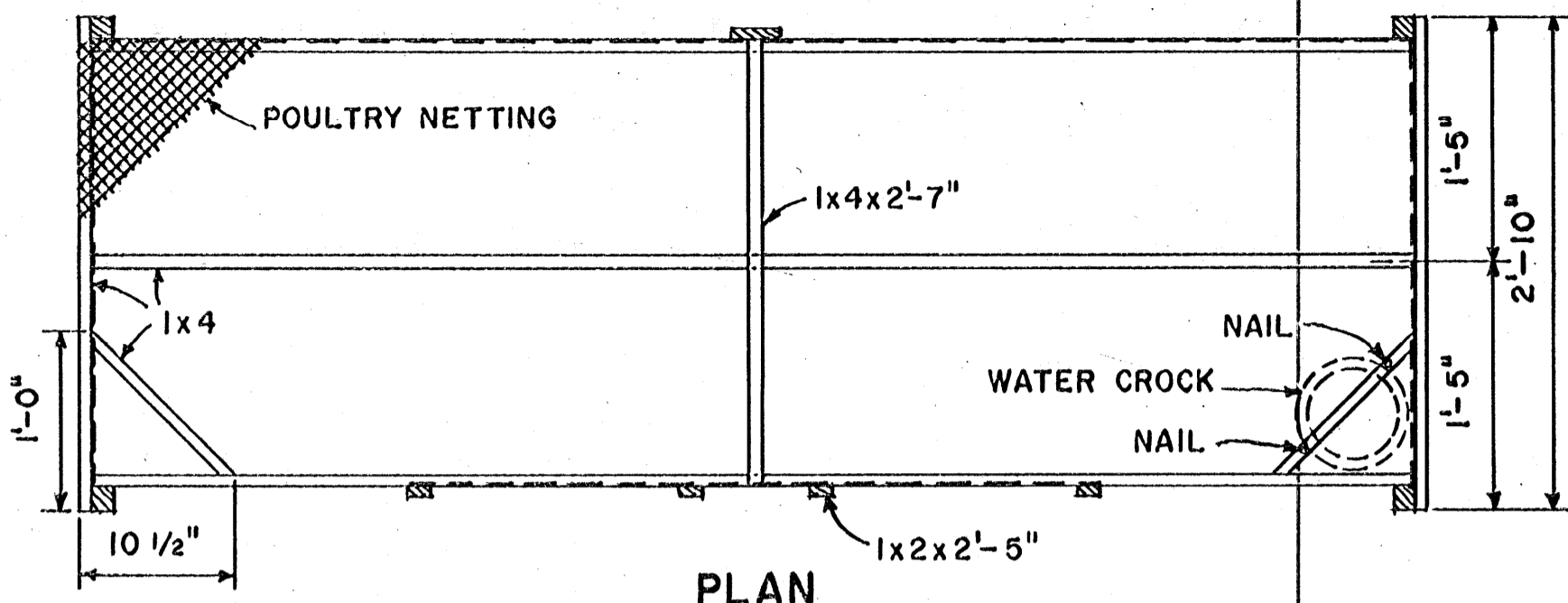


PERSPECTIVE OF SINGLE DECK HUTCHES WITH 2x2 LEGS

NOTE:
POULTRY NETTING NOT SHOWN
ON THESE PERSPECTIVES.

COOPERATIVE EXTENSION WORK IN AGRICULTURE AND HOME ECONOMICS		
STATE OF MISSISSIPPI		
MISSISSIPPI STATE UNIVERSITY, AND UNITED STATES DEPARTMENT OF AGRICULTURE COOPERATING		
HUTCHES FOR RABBITS		
N.M. & CAL. '72	6137	SHEET 1 OF 4

BASED ON NEW MEXICO PLAN



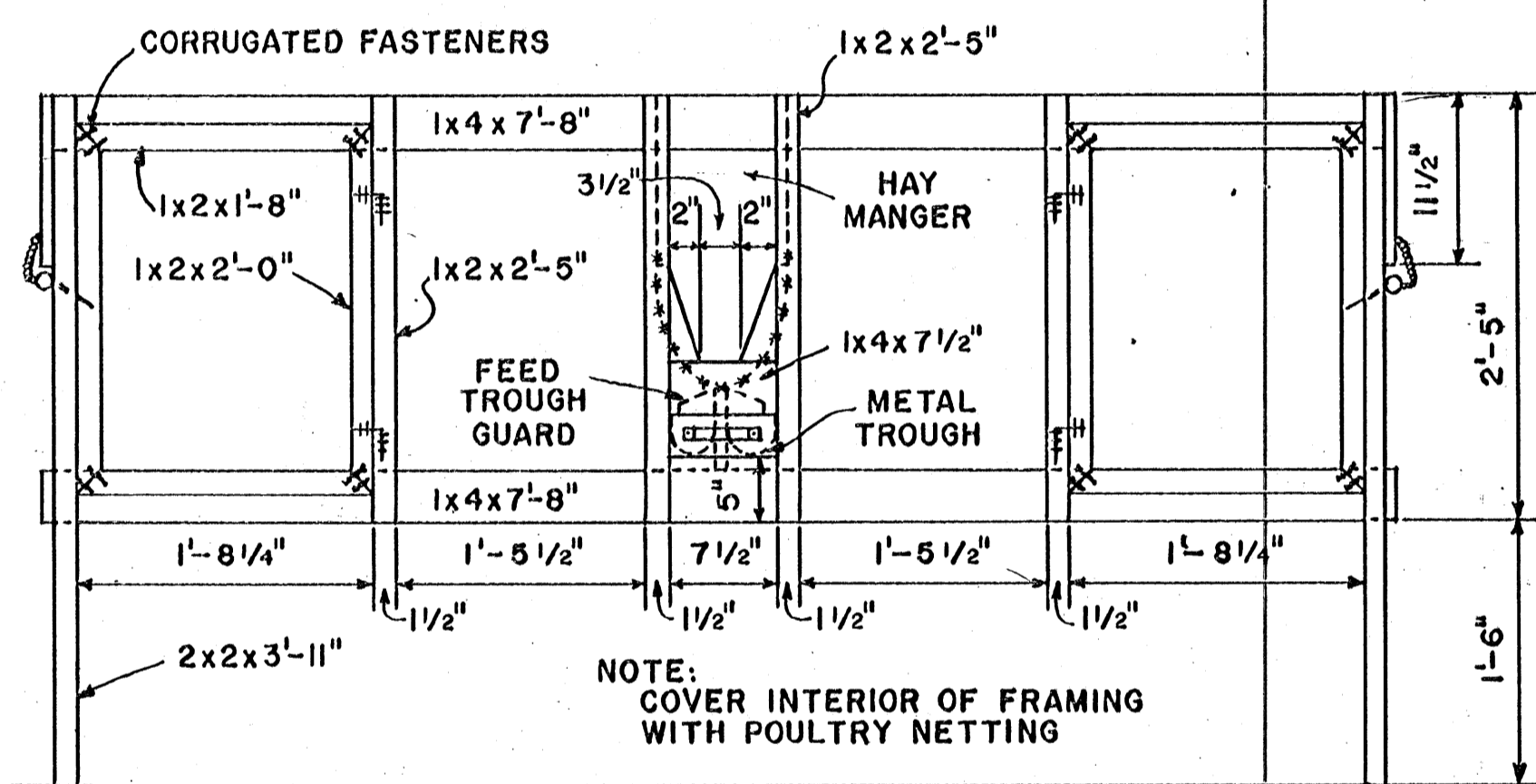
DOOR HINGE
SCALE: 3"=1'-0"



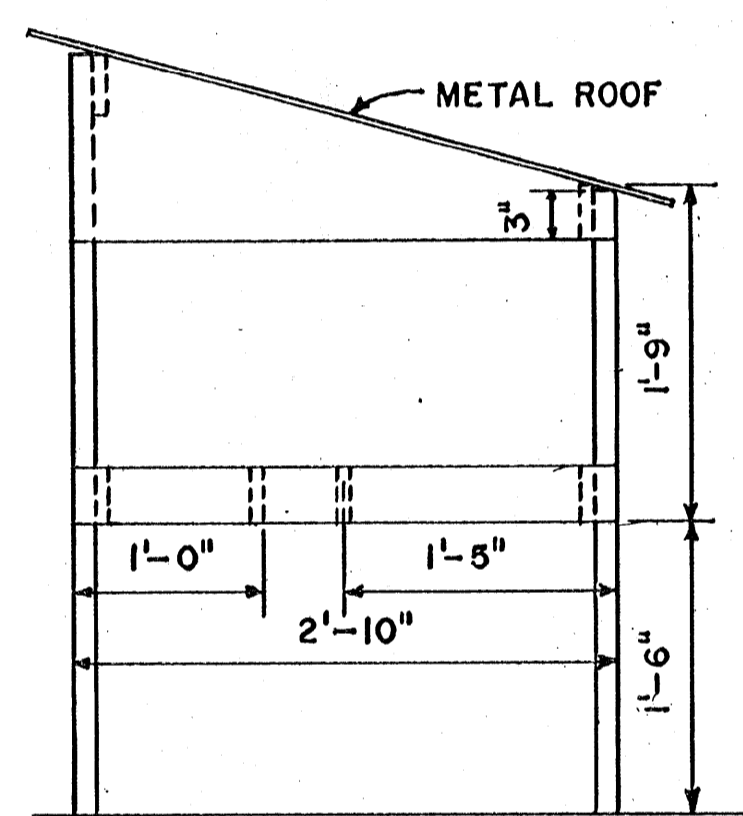
DOOR LATCH
SCALE: 3"=1'-0"

NO. 9 WIRE 5 1/4" LONG
DRIVE 3/4" END INTO
DOOR FRAME AND
STAPLE TO DOOR
AND JAMB

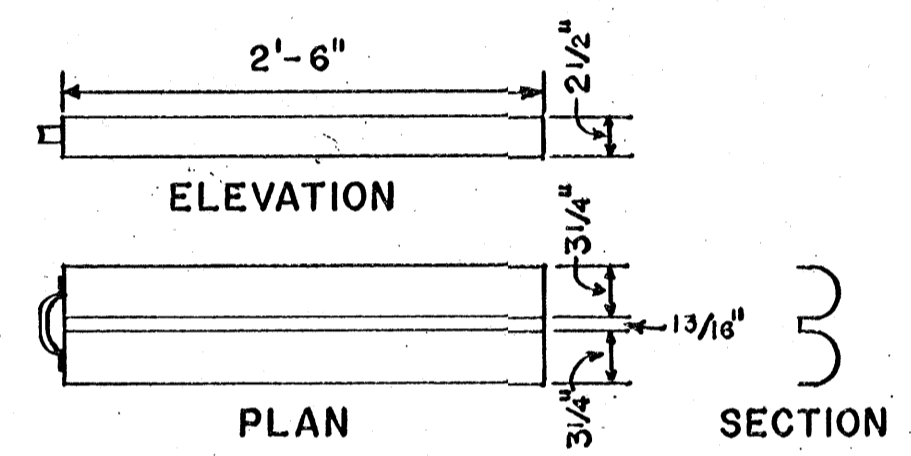
NO. 9 WIRE 7" LONG
DRILL A 3/16" HOLE IN
2x2 AT A 30° DOWNWARD
ANGLE AND CENTERED



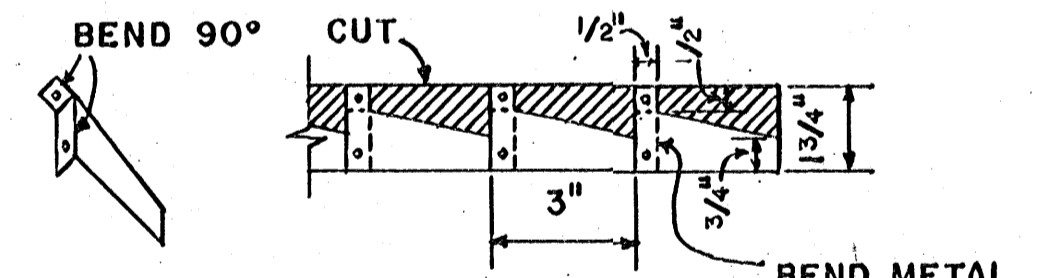
FRONT ELEVATION



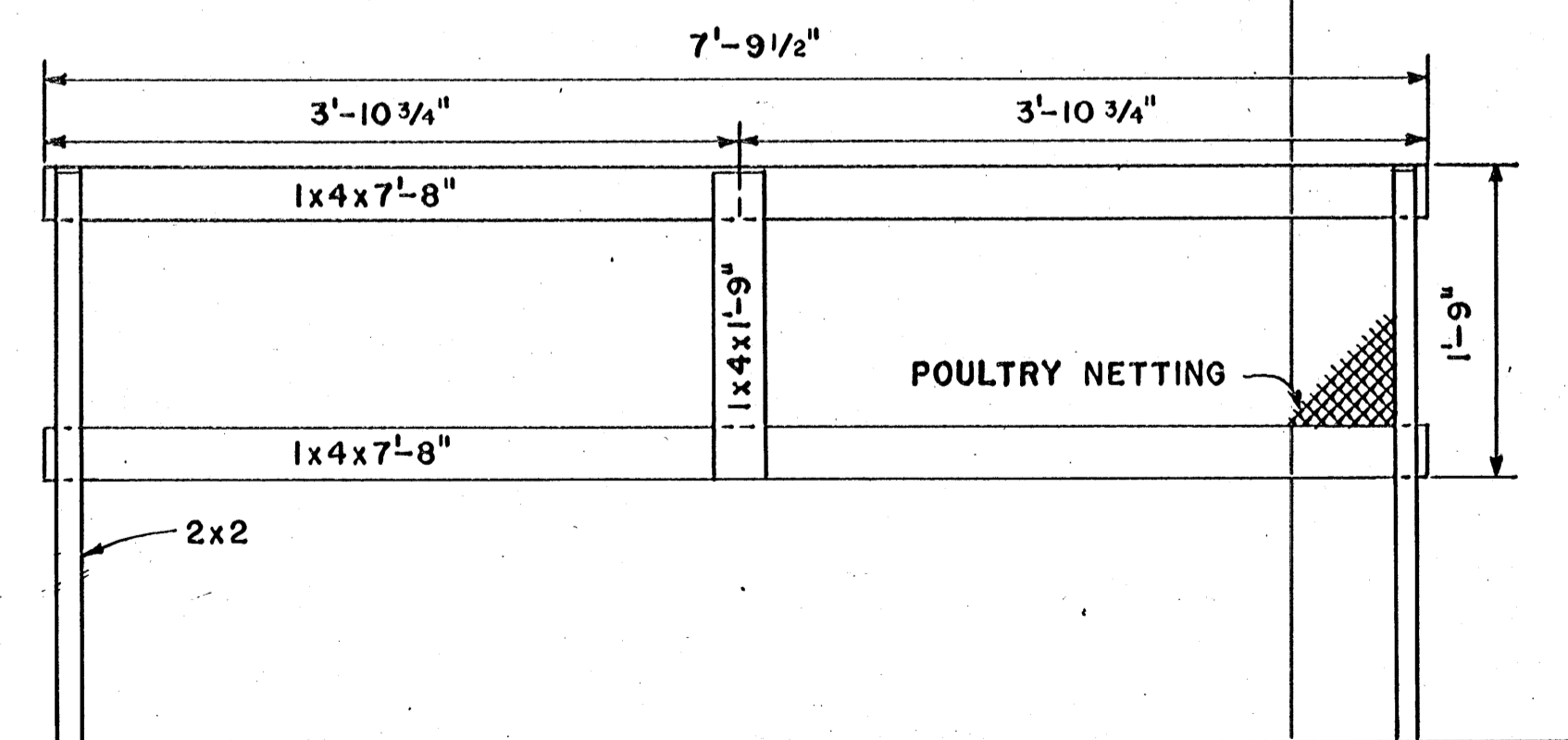
END ELEVATION



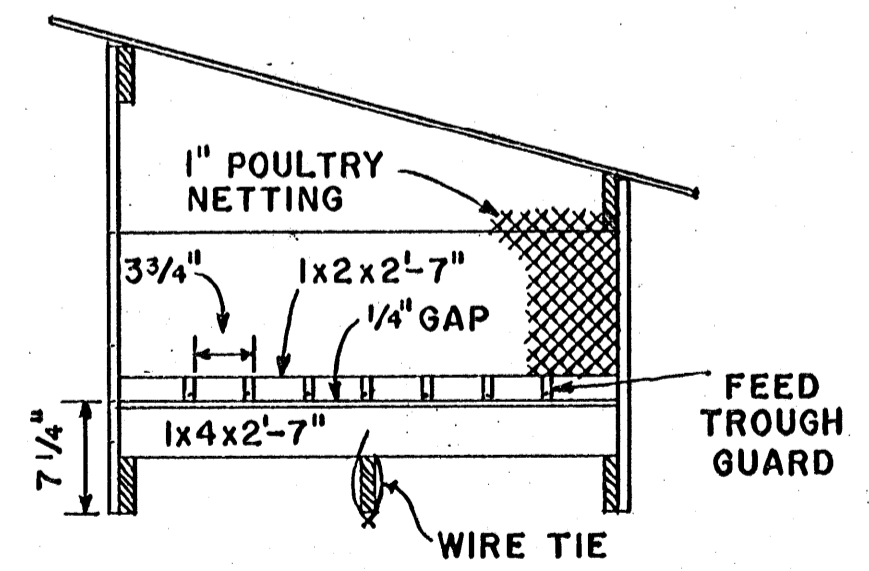
METAL FEED TROUGH



FEED TROUGH GUARD
SCALE: 3"=1'-0"



REAR ELEVATION



SECTION
(TROUGH NOT SHOWN)

SCALE: 1"=1'-0" UNLESS
OTHERWISE NOTED.

COOPERATIVE EXTENSION WORK IN
AGRICULTURE AND HOME ECONOMICS
STATE OF MISSISSIPPI
MISSISSIPPI STATE UNIVERSITY
AND
UNITED STATES DEPARTMENT OF AGRICULTURE COOPERATING

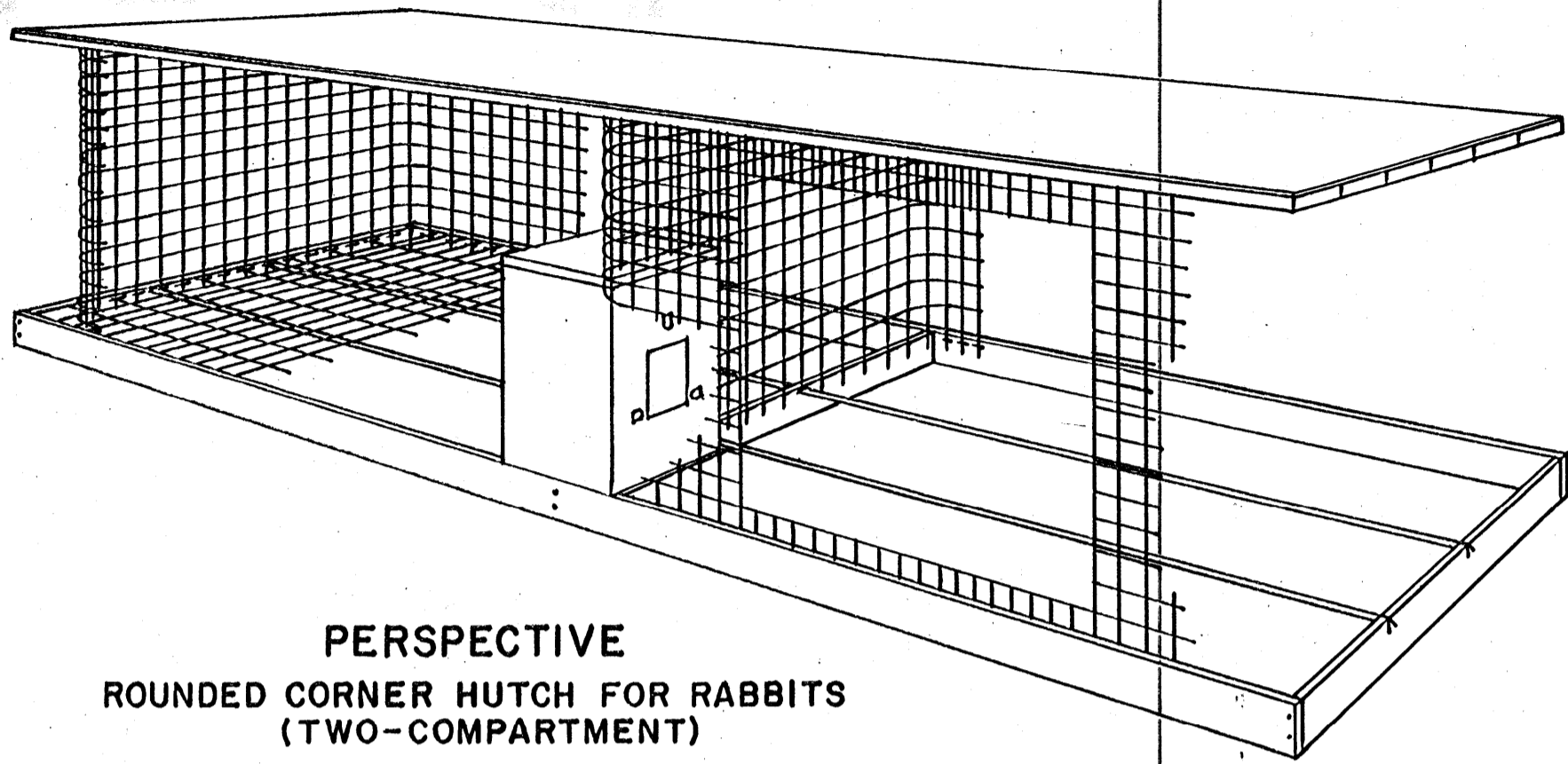
HUTCHES FOR RABBITS

N.M. & CAL. '72	6137	SHEET 2 OF 4
-----------------	------	--------------

BASED ON NEW MEXICO PLAN

NOTES:

- A. ASSEMBLE WOOD FRAME AND COUNTERSINK METAL FLOOR SUPPORTS.
- B. STAPLE THE 16-GAUGE, 30-INCH BY 8-FOOT GALVANIZED WIRE MESH TO THE FRAME, USING 1-BY 1/2-INCH MESH FOR SMALL AND MEDIUM BREEDS OF RABBIT, AND 1-BY 5/8-INCH FOR THE LARGER BREEDS.
- C. THE CURVED WALLS ARE FORMED FROM 1/2-BY 1/2-INCH GALVANIZED WIRE MESH. CUT THE TWO BOTTOM STRANDS OF WIRE, LEAVING 1-INCH VERTICAL PROJECTIONS. THE 1-INCH PROJECTIONS ARE PLACED INSIDE THE WOOD FLOOR FRAME, FORMING TWO COMPARTMENTS, AND STAPLED.
- D. CUT THE DOOR OPENINGS BEGINNING 4-INCHES FROM THE FLOOR. THE OPENING IS REINFORCED BY TURNING 2-INCHES UP ON THE INSIDE ACROSS THE TOP AND 2-INCHES DOWN ON THE INSIDE ACROSS THE BOTTOM.
- E. CUT EVERY THIRD STRAND ON THE TOP TWO HORIZONTAL STRANDS OF THE SIDE AND REAR WALLS. THE 2-INCH TABS FORMED ARE BENT IN AT RIGHT ANGLES ACROSS THE BACK AND IN GRADUATED DEGREES ON SIDES TO GIVE A 2-INCH PITCH TO THE ROOF. TURN THE CAGE SECTION UPSIDE DOWN ON THE ROOF SHEATHING, THAT HAS BEEN ASSEMBLED WITH CORRUGATED FASTENERS, AND STAPLE. COVER ROOF WITH A 3-FOOT WIDE PIECE OF 90-POUND ROOFING FELT AND NAIL.
- F. THE DOORS ARE OF 1-BY 1-INCH WIRE MESH CUT 21-BY 24-INCHES. TO GIVE RIGIDITY TURN DOWN 1-INCH ON INSIDE ACROSS THE TOP, AND TURN UP 2-INCHES ON INSIDE ACROSS THE BOTTOM. MAKE THE DOOR FASTENERS AS SHOWN. USE ALUMINUM CAGE CLIPS FOR ALL FASTENERS AND HINGES. HINGE DOOR ON FEEDER SIDE WITH 4-CAGE CLIPS. INSTALL DOOR FASTENER WITH SMALL WIRE TIES AT THE 1 3/4- AND 1 5/8-INCH SHANKS, SO FASTENER OVERLAPS THE EDGE OF THE CLOSED DOOR TO MAKE IT SECURE.

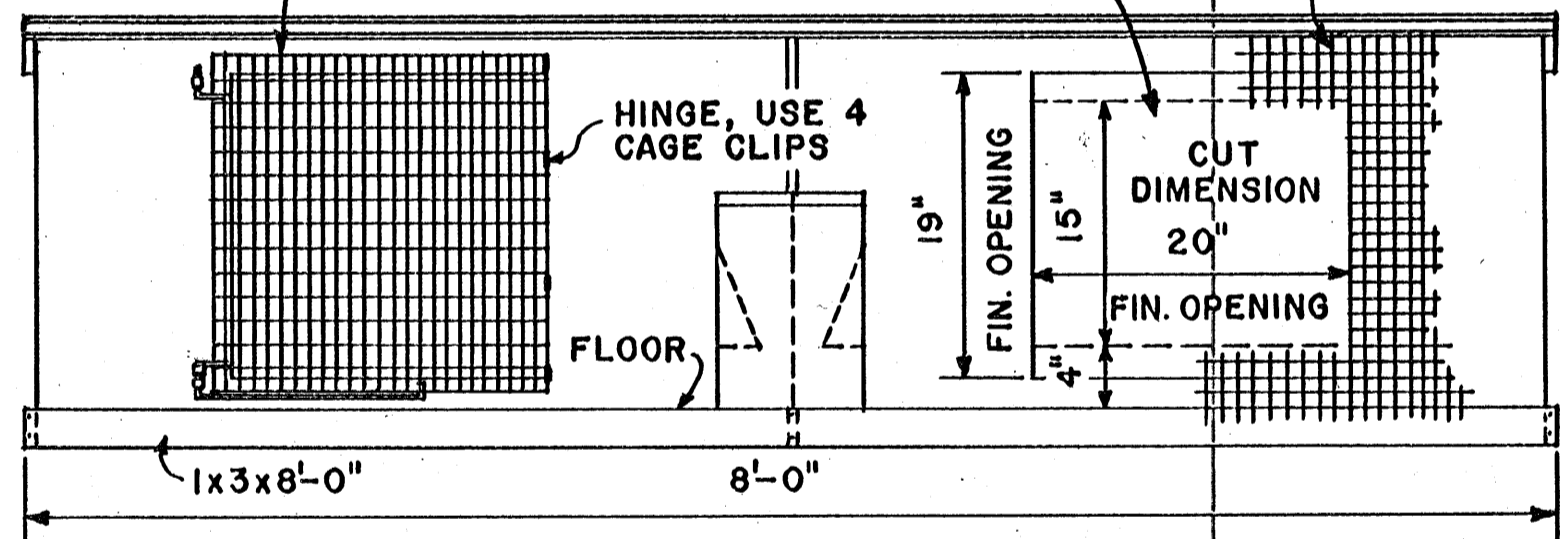


PERSPECTIVE
ROUNDED CORNER HUTCH FOR RABBITS
(TWO-COMPARTMENT)

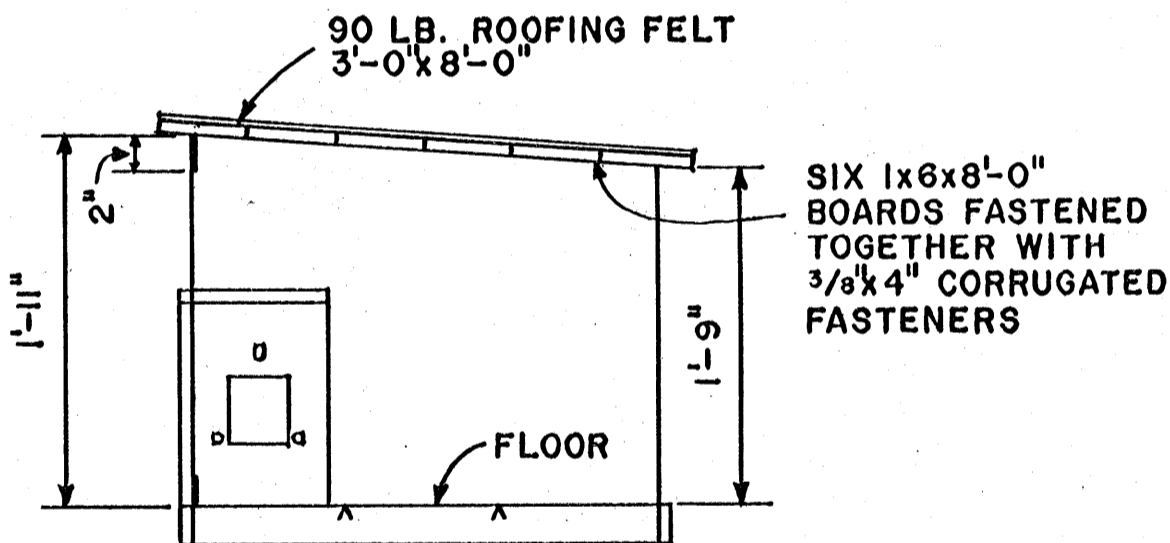
DOOR FROM 24 GA. 1"x1" MESH CUT 21"x24" WITH 1" TURNED DOWN ON TOP AND 2" TURNED UP ON BOTTOM FOR 21"x21" DOOR.

DOOR OPENING, MAKE 2" FOLD TOP AND BOTTOM

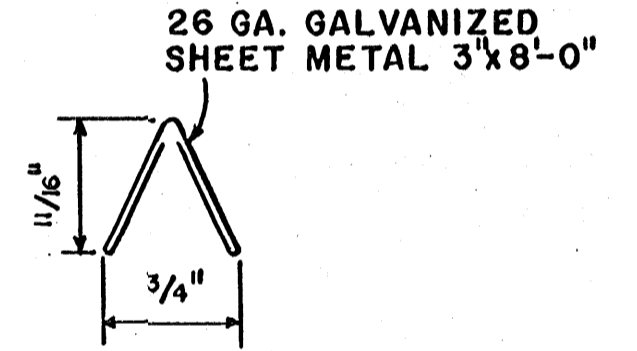
TWO PIECES 1"x1" 24 GA. WIRE MESH 2'-0"x13'-0"



FRONT ELEVATION

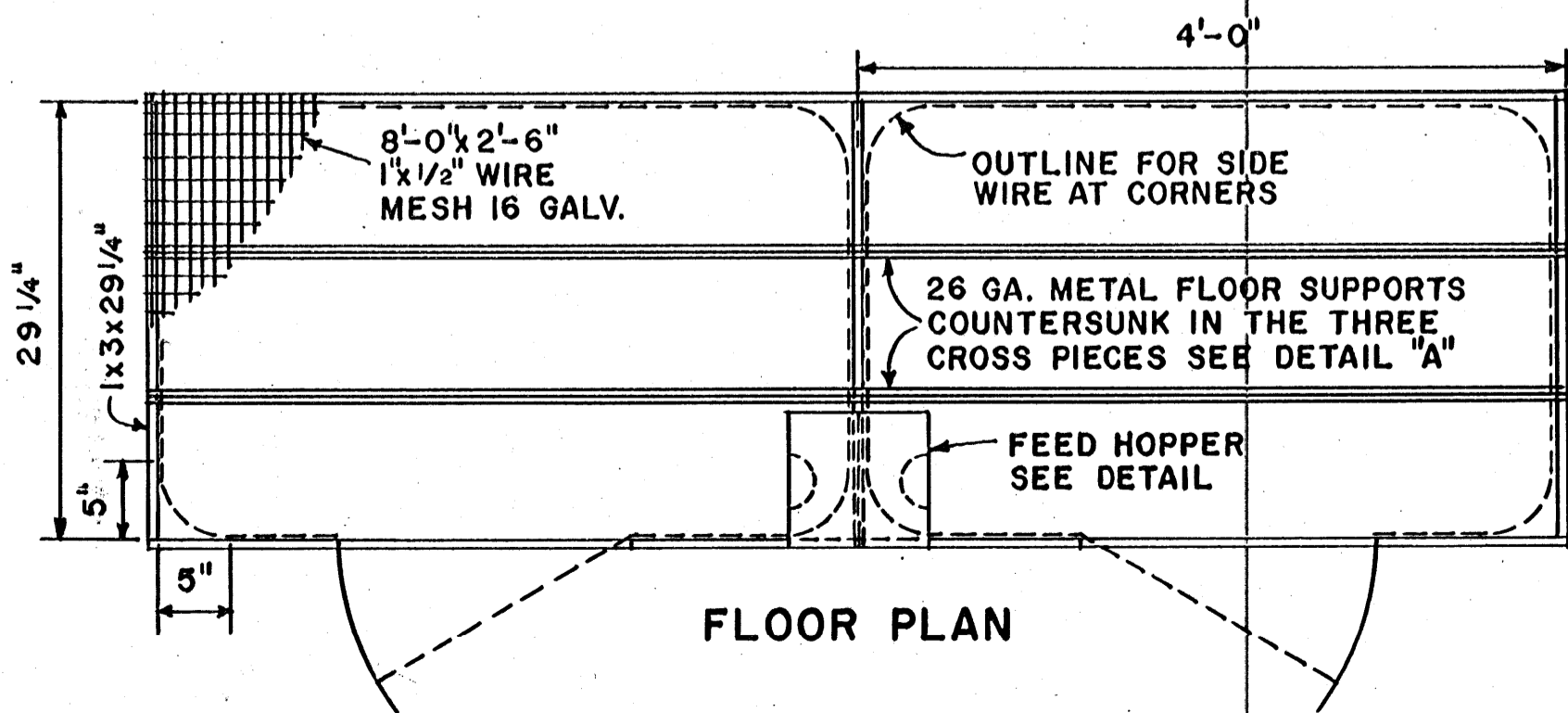


SECTION

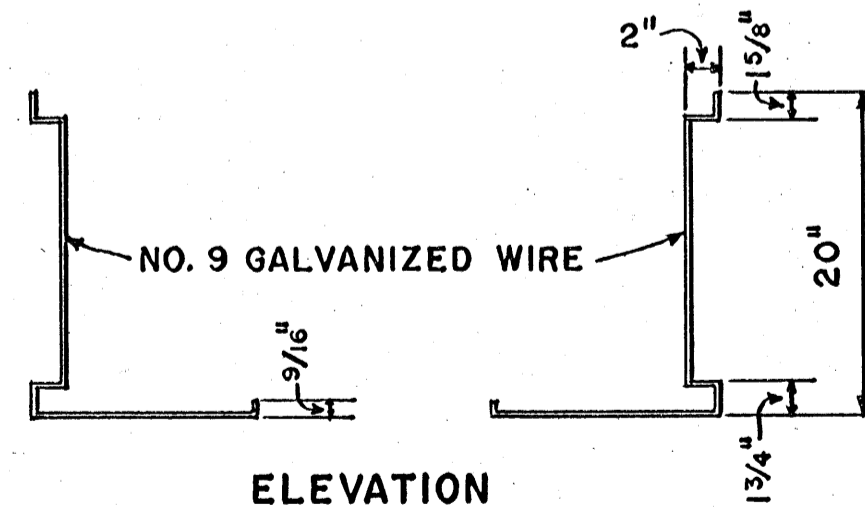


NOTE:
 TWO METAL FLOOR SUPPORTS ARE REQUIRED

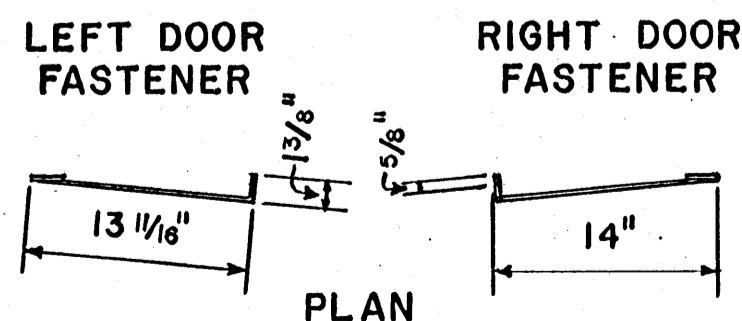
DETAIL "A"
METAL FLOOR SUPPORT
FULL SCALE



FLOOR PLAN



ELEVATION

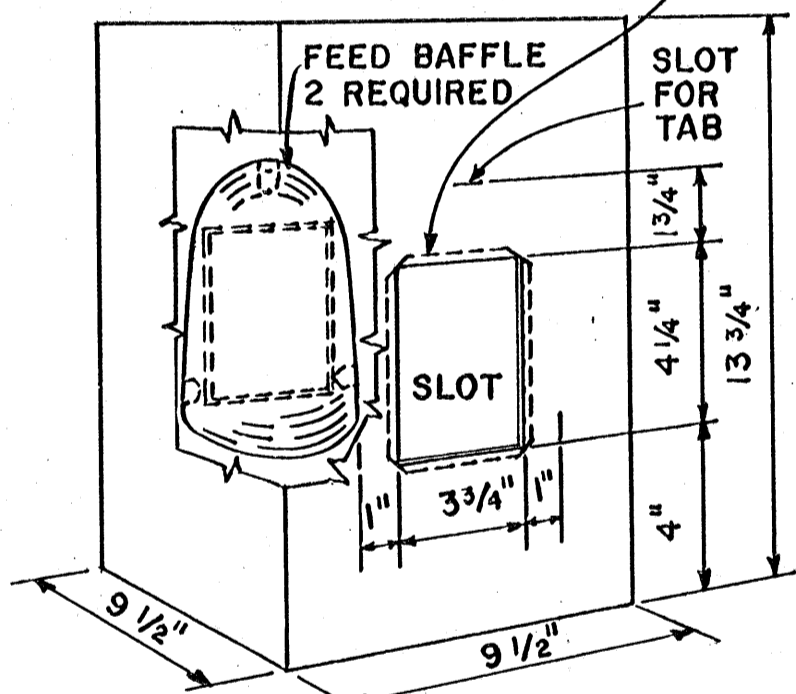
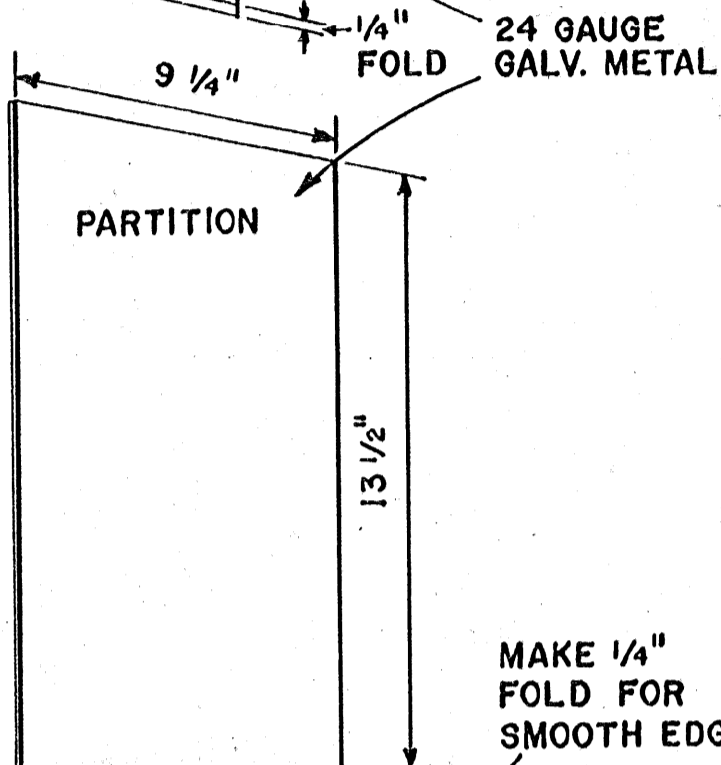
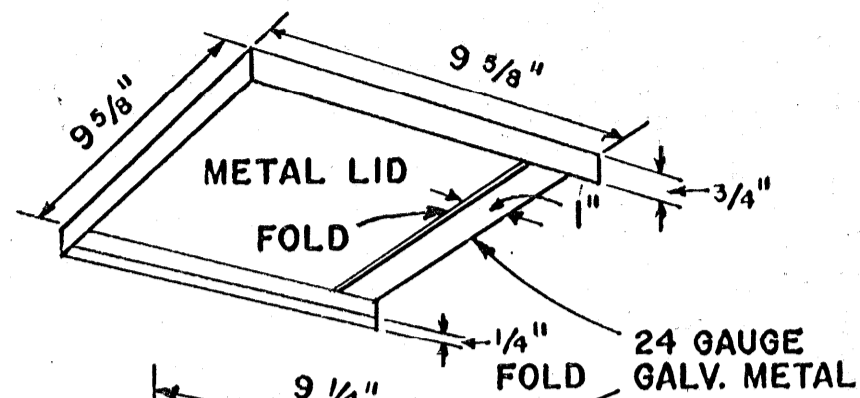


PLAN
DOOR FASTENERS

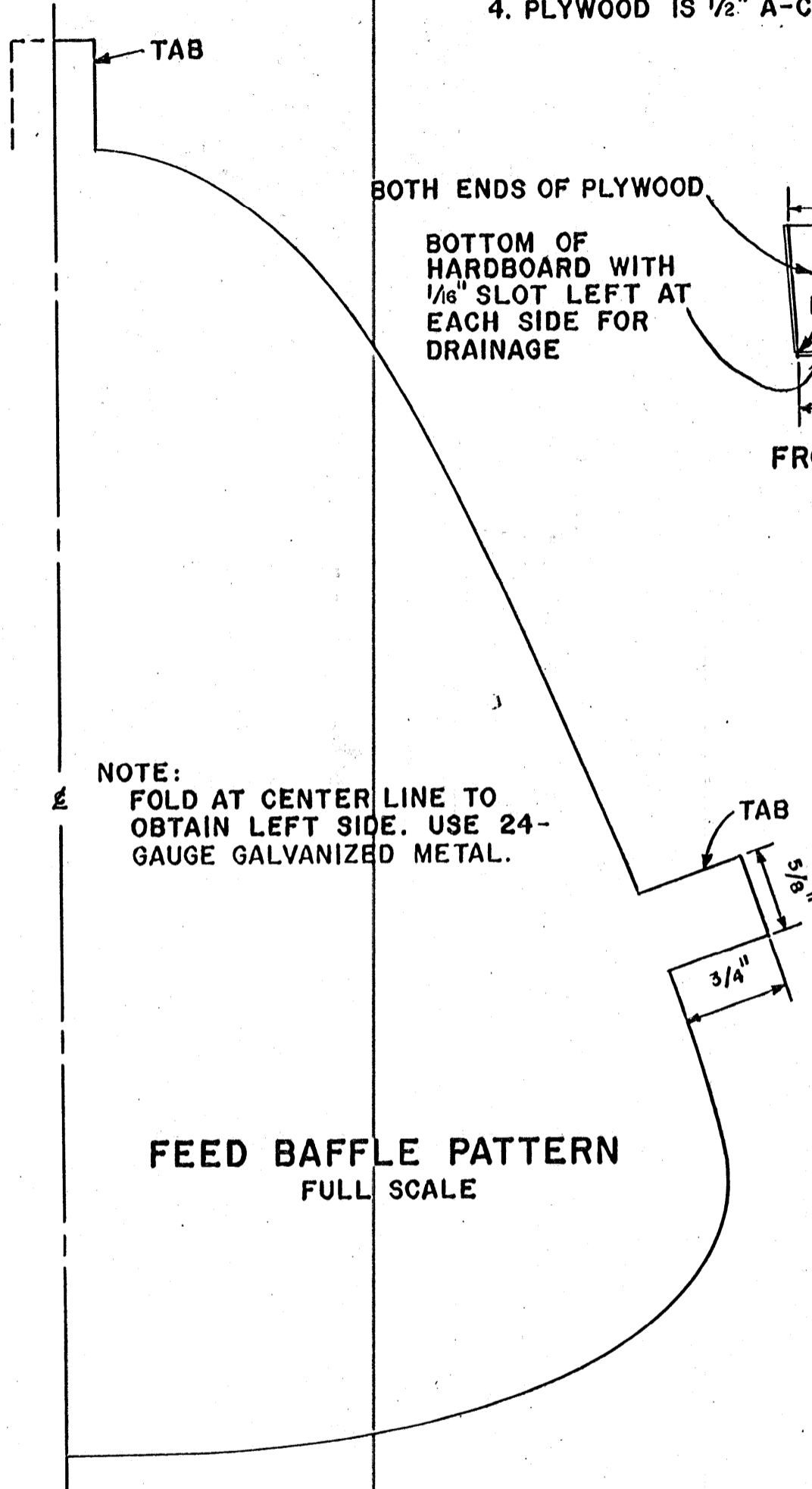
SCALE: 1"=1'-0" UNLESS OTHERWISE NOTED

COOPERATIVE EXTENSION WORK IN AGRICULTURE AND HOME ECONOMICS		
STATE OF MISSISSIPPI		
MISSISSIPPI STATE UNIVERSITY		
AND UNITED STATES DEPARTMENT OF AGRICULTURE COOPERATING		
HUTCHES FOR RABBITS		
N.M. & CAL '72	6137	SHEET 3 OF 4

BASED ON USDA LEAFLET NO. 378

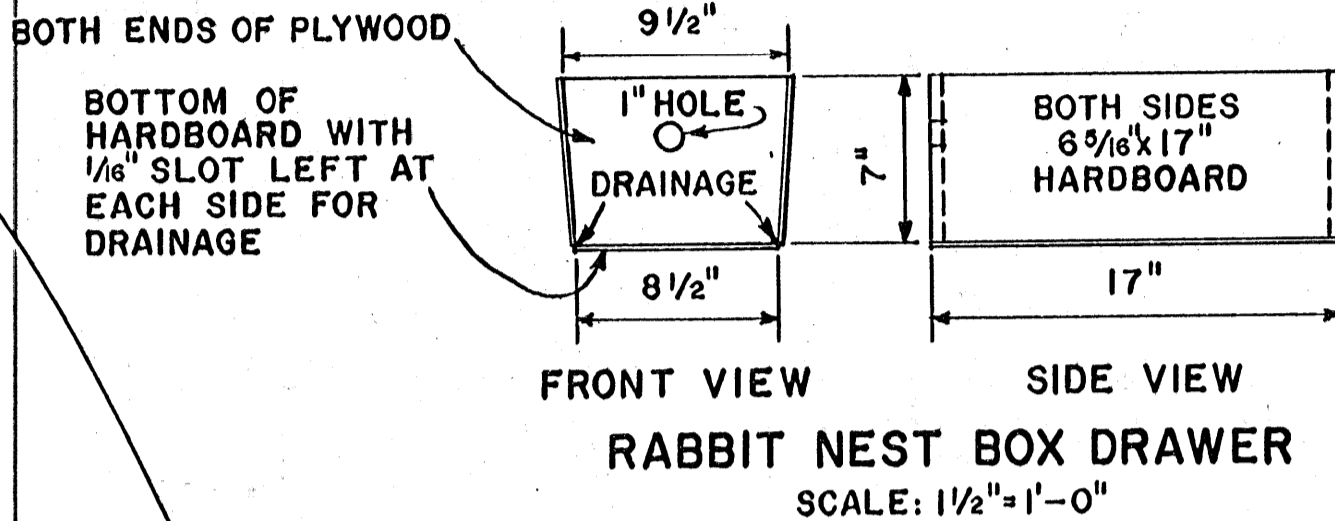


FEED HOPPER

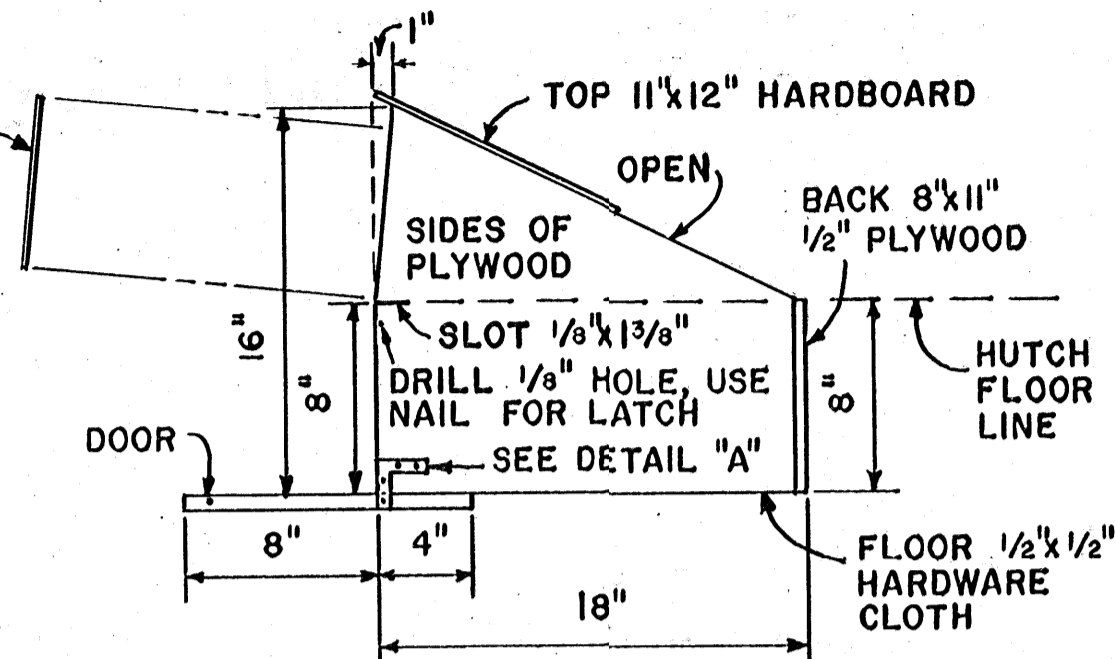


NOTE:
FOLD AT CENTER LINE TO OBTAIN LEFT SIDE. USE 24-GAUGE GALVANIZED METAL.

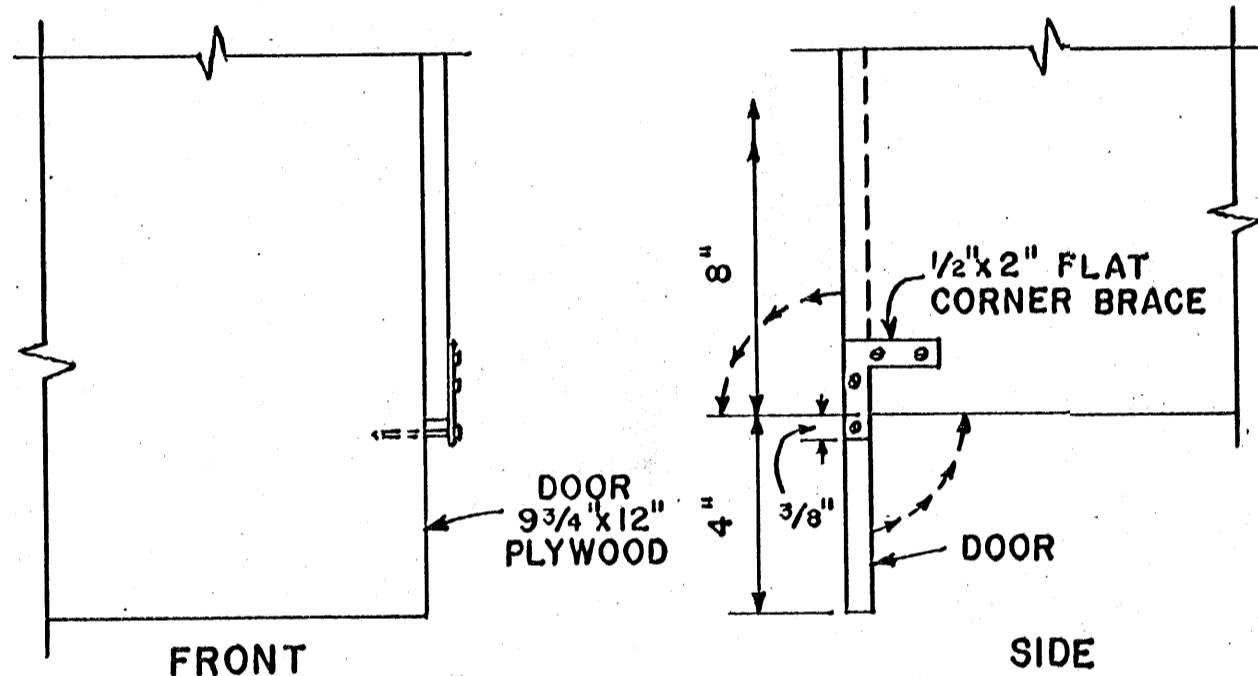
- NOTE:
1. COVER ALL EXPOSED "CHEWABLE EDGES" WITH METAL.
 2. ALL PLYWOOD TO PLYWOOD JOINTS SHOULD BE NAILED AND GLUED.
 3. HARDBOARD IS 1/8" TEMPERED.
 4. PLYWOOD IS 1/2" A-C EXT. DFPA



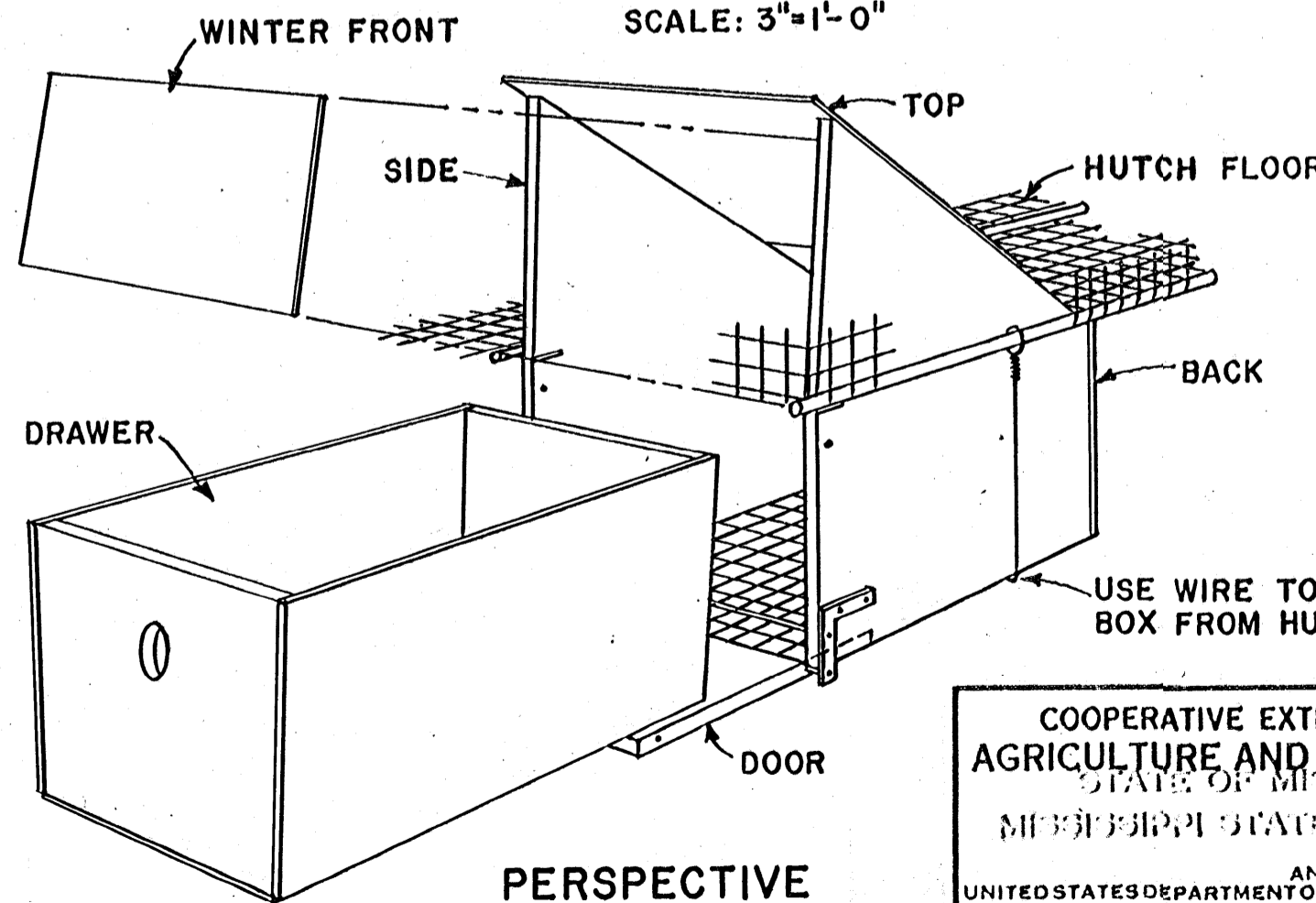
RABBIT NEST BOX DRAWER
SCALE: 1 1/2"=1'-0"



RABBIT NEST BOX-SIDE VIEW
SCALE: 1 1/2"=1'-0"



DETAIL "A"
SCALE: 3"=1'-0"



PERSPECTIVE
RABBIT NEST BOX

COOPERATIVE EXTENSION WORK IN
AGRICULTURE AND HOME ECONOMICS
STATE OF MISSISSIPPI
MISSISSIPPI STATE UNIVERSITY
AND
UNITED STATES DEPARTMENT OF AGRICULTURE COOPERATING

HUTCHES FOR RABBITS

N.M. & CAL. '72	6137	SHEET 4 OF 4
-----------------	------	--------------

BASED ON CALIF. PLAN NO. OSA #210

- NOTES:
- A. THE FEED HOPPER, MADE FROM A 5-GALLON CAN, SUPPLIES FEED TO BOTH UNITS OF A DOUBLE HUTCH. BEGINNING 4 1/4-INCHES FROM THE BOTTOM OF THE CAN, CUT AN OPENING 3 3/4-INCHES HIGH AND 3 1/4-INCHES WIDE. TURN INSIDE 1/4-INCH TO MAKE SMOOTH EDGE.
 - B. THE BAFFLE, LID, AND DIVIDER ARE MADE FROM 24-GAUGE GALVANIZED METAL.
 - C. CUT THE BAFFLE USING FULL SIZE 1/2 PATTERN SHOWN, FOLD AT CENTERLINE TO OBTAIN OTHER 1/2-PATTERN. INSERT TABS THROUGH SLOTS SHOWN AND BEND.
 - D. FOR THE LID: CUT METAL 1-INCH LARGER, ON ALL SIDES, THAN TOP OF CAN. ON THREE SIDES 1/4-INCH IS FOLDED BACK TO MAKE A SMOOTH EDGE, AND THEN 3/4-INCH IS BENT DOWN AT RIGHT ANGLES TO HOLD THE LID IN PLACE. THE 1-INCH IS FOLDED FLAT ON THE FOURTH SIDE FOR RIGIDITY. THIS ALLOWS THE CARETAKER TO SLIDE THE LID OFF THE CAN WHEN REPLENISHING THE SUPPLY OF PELLETS.