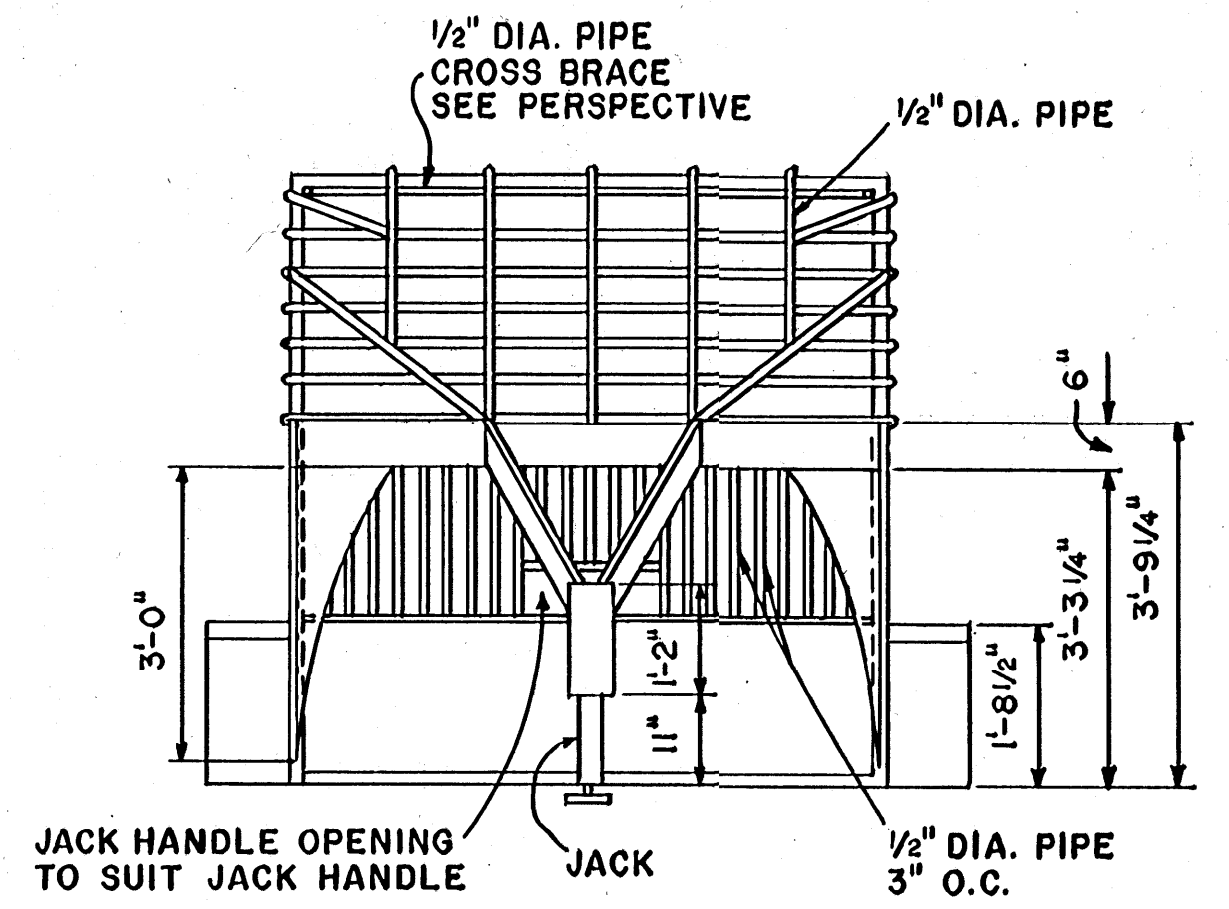
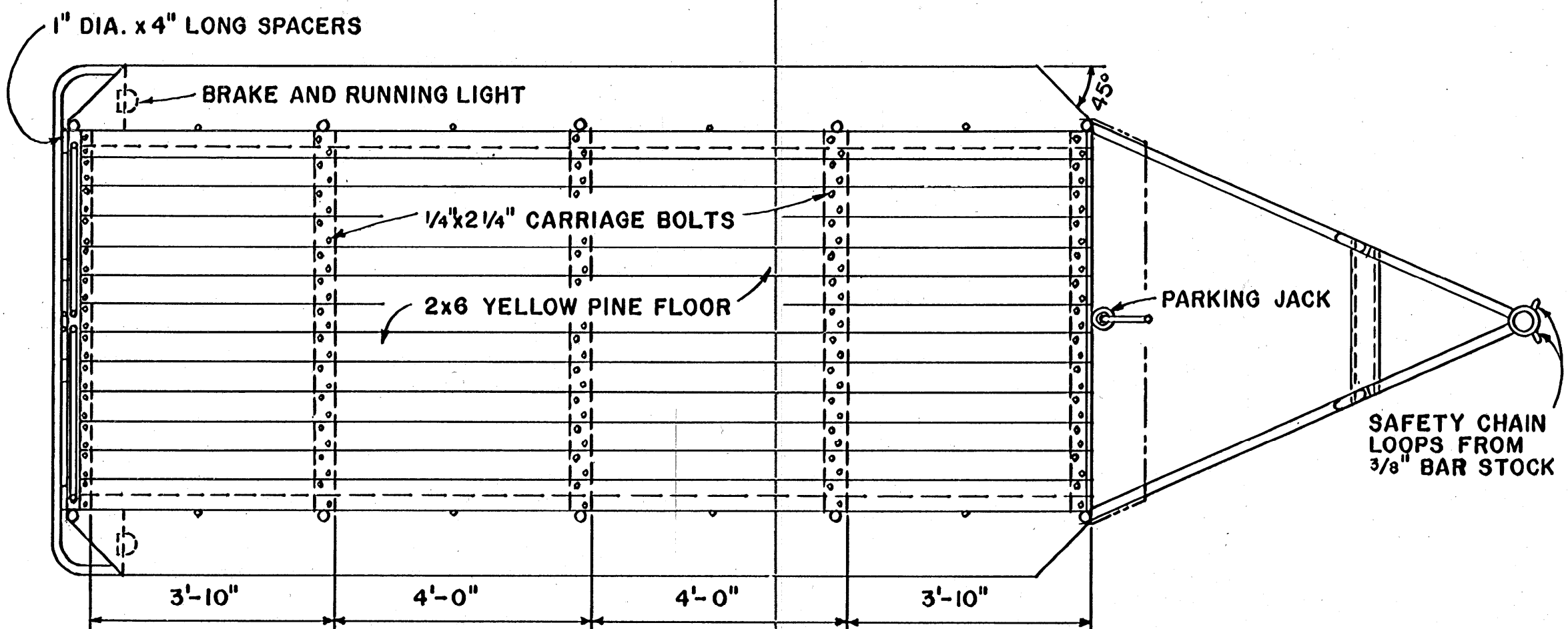


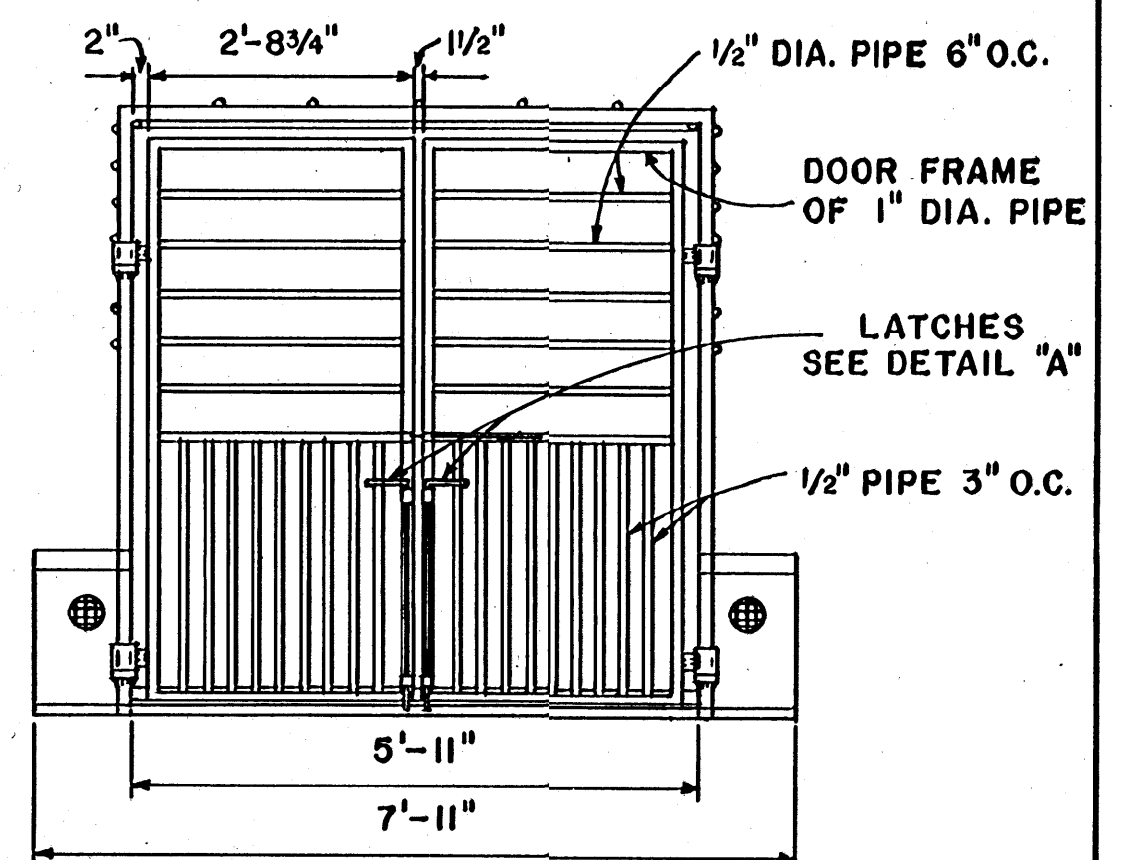
SIDE VIEW



FRONT VIEW



SECTION A-A



REAR VIEW

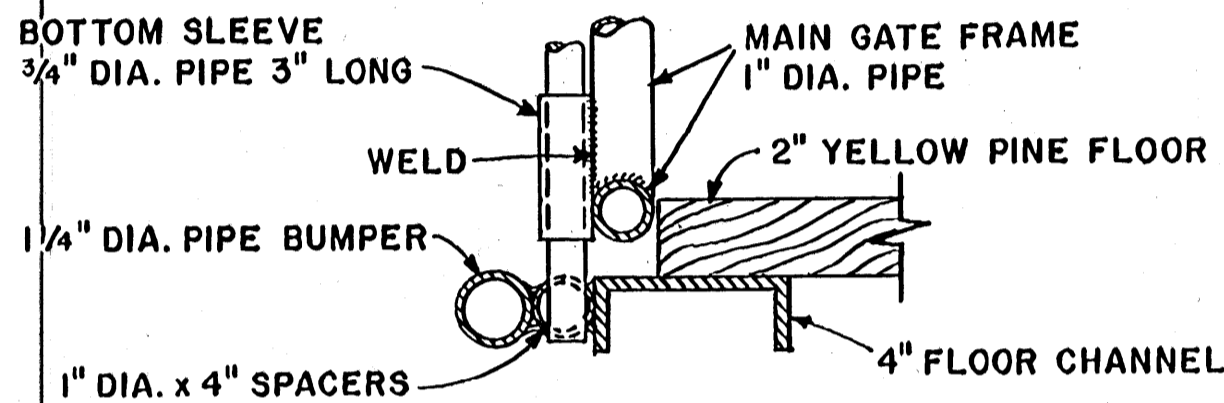
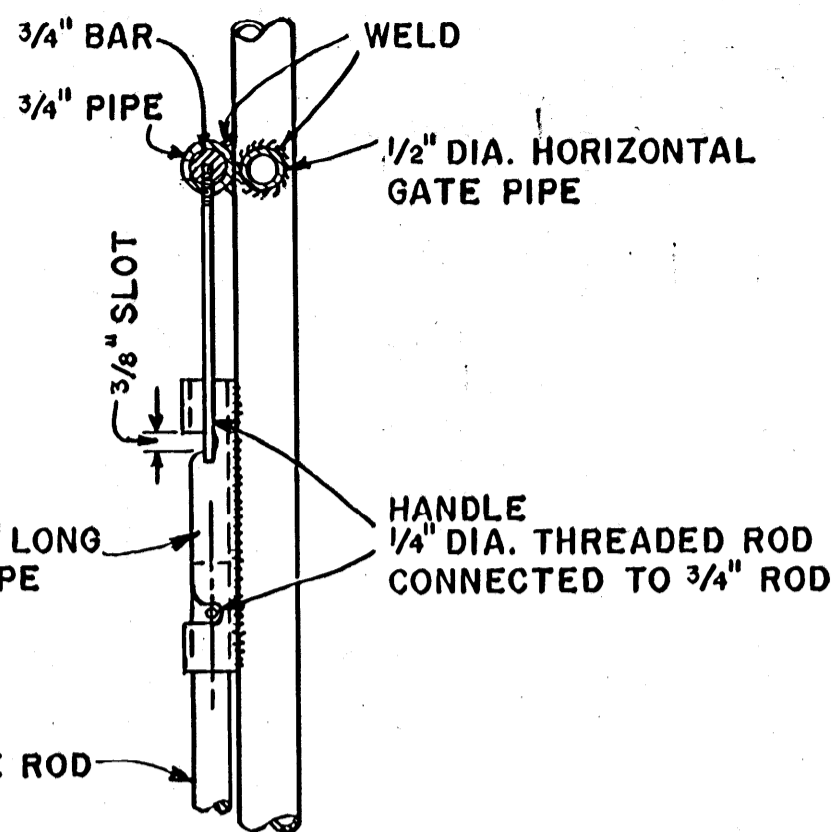
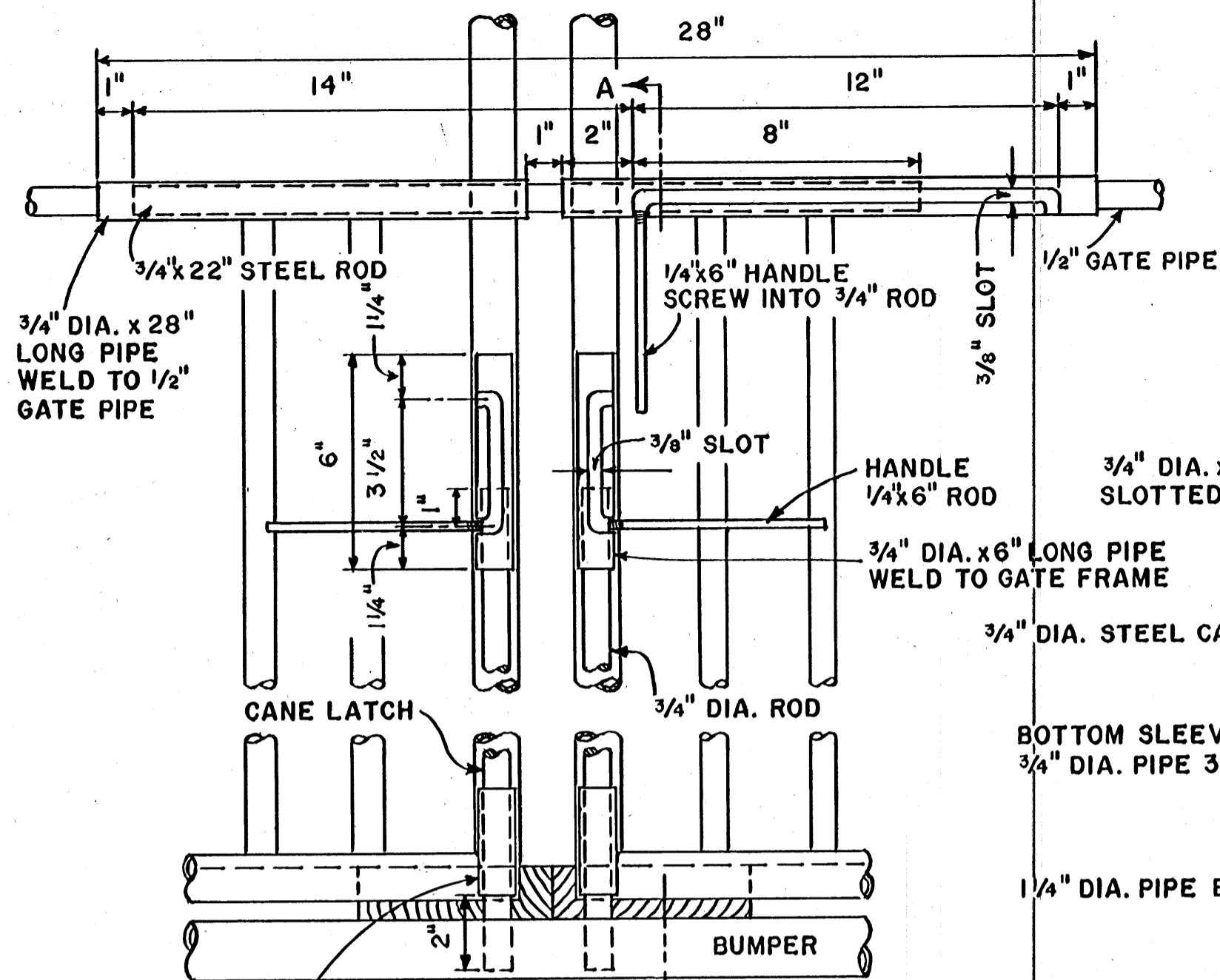
SCALE: 1/2"=1'-0" UNLESS OTHERWISE NOTED

COOPERATIVE EXTENSION WORK IN AGRICULTURE AND HOME ECONOMICS  
 STATE OF MISSISSIPPI  
 MISSISSIPPI STATE UNIVERSITY  
 AND  
 UNITED STATES DEPARTMENT OF AGRICULTURE COOPERATING

**TRAILER FOR CATTLE  
 GOOSENECK TYPE**

TEXAS '72	6141	SHEET 1 OF 2
-----------	------	--------------

BASED ON: TEXAS A & M UNIV. PLAN NO. 551



BOTTOM SLEEVE  
3/4" DIA. x 3"  
LONG PIPE  
WELD TO GATE

DETAIL "A"

GATE LATCH  
SCALE: 3"=1'-0"

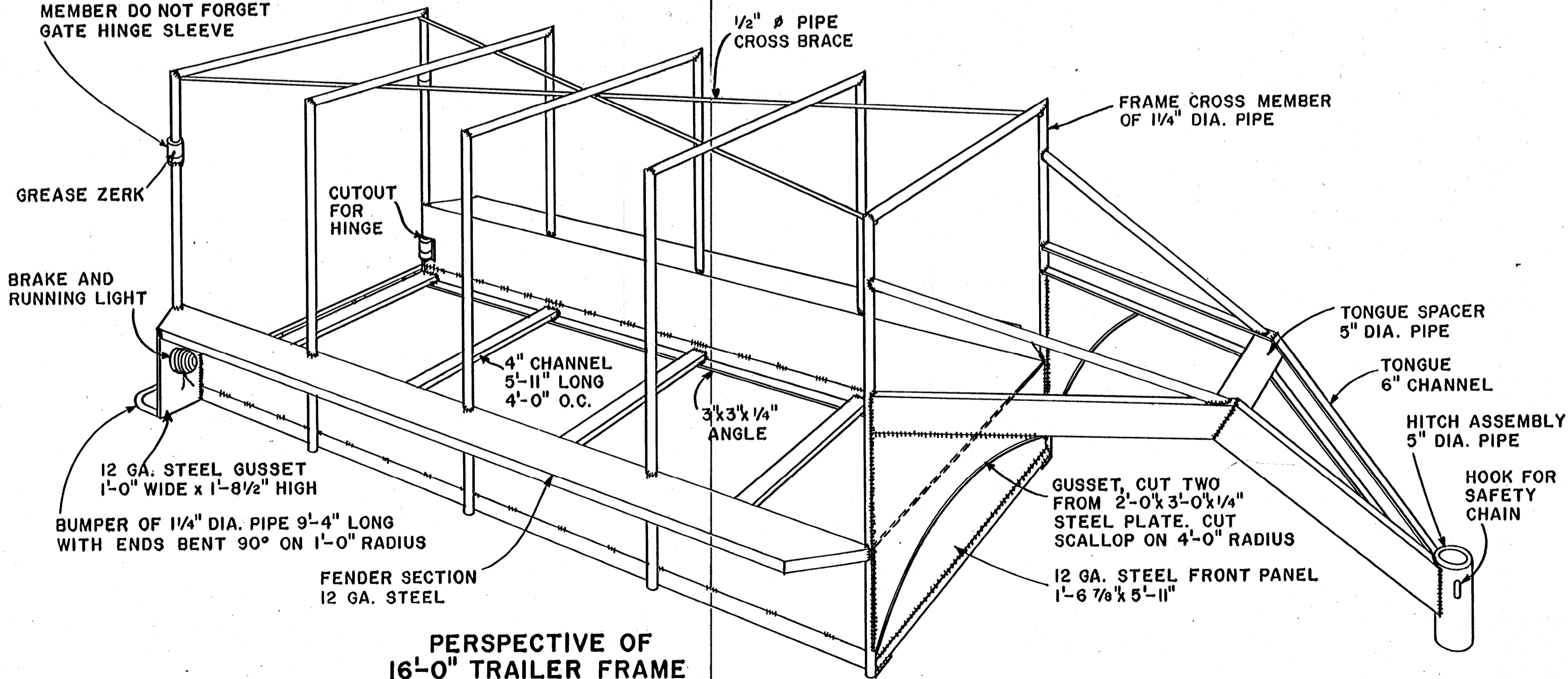
SECTION A-A

NOTE #1:  
CHECK YOUR PICKUP OR TRUCK FOR THE DISTANCE BETWEEN OUTSIDE REAR BUMPER OR CORNER OF BED TO POINT OVER AXLE IN CENTER OF BED. MAKE THE DISTANCE BETWEEN HITCH AND TRAILER 2'-0" LONGER THAN YOUR MEASUREMENT. TO EXTEND INCREASE LENGTH OF THE DOWNWARD ANGLED 6" CHANNELS.

NOTE #2:  
THE CARRIAGE ASSEMBLY OF YOUR CHOICE MAY BE USED IN TANDEM  
1. STRAIGHT AXLE AND NO SPRINGS  
2. STRAIGHT AXLE AND LEAF SPRINGS  
3. FOR HIGHWAY USE MAINLY, A DROP AXLE MAY BE USED.

NOTE #3:  
CAUTION: THE EXPECTED MAXIMUM LOAD WILL APPROACH 7 TONS, THEREFORE, SPECIFY EACH AXLE AND WHEEL ASSEMBLY TO CARRY 3 1/2 TONS HIGHWAY AND NON HIGHWAY USE, WHEN ORDERING FROM CARRIAGE MANUFACTURER. TIRES SHOULD BE 8 PLY AND MATCHED TO AXLE AND USE.  
THIS DESIGN HEIGHT IS FOR CATTLE, IF HORSES ARE TO BE HAULED FREQUENTLY RAISE HEIGHT 6".

NOTE:  
WHEN SETTING REAR CROSS MEMBER DO NOT FORGET GATE HINGE SLEEVE



PERSPECTIVE OF  
16'-0" TRAILER FRAME

COOPERATIVE EXTENSION WORK IN  
AGRICULTURE AND HOME ECONOMICS  
STATE OF MISSISSIPPI  
MISSISSIPPI STATE UNIVERSITY  
AND  
UNITED STATES DEPARTMENT OF AGRICULTURE COOPERATING

TRAILER FOR CATTLE  
GOOSENECK TYPE

TEXAS '72 6141 SHEET 2 OF 2