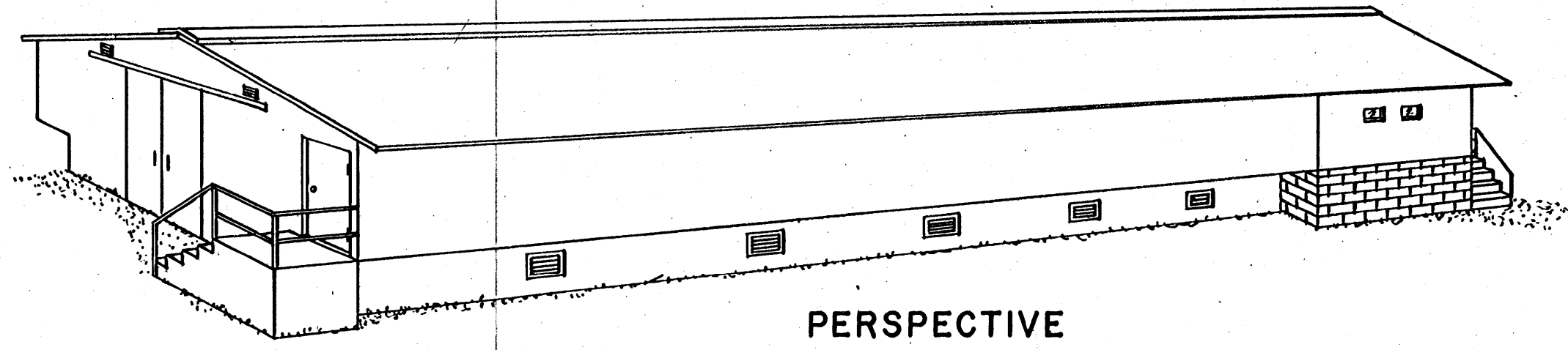


NOTE:  
2x4 STUDS-1'-4" O.C.,  
ALL SIDES OF STORAGE RM.

NOTE:  
CONTINUOUS AT 1 CFM. PER BIRD  
FRESH AIR SYSTEM-TWO INLET  
LOUVERS EACH END. TWO PERF.  
PE TUBES AT 130' FROM EACH END  
ONE EXHAUST FAN EACH SIDE.

PLAN  
SCALE: 3/16" = 1'-0"  
12" 0' 1' 2' 3' 4' 5' 6' 7' 8'

NOTE:  
CONSULT LOCAL HEALTH  
AND BUILDING CODE  
AUTHORITIES BEFORE  
STARTING CONSTRUCTION.

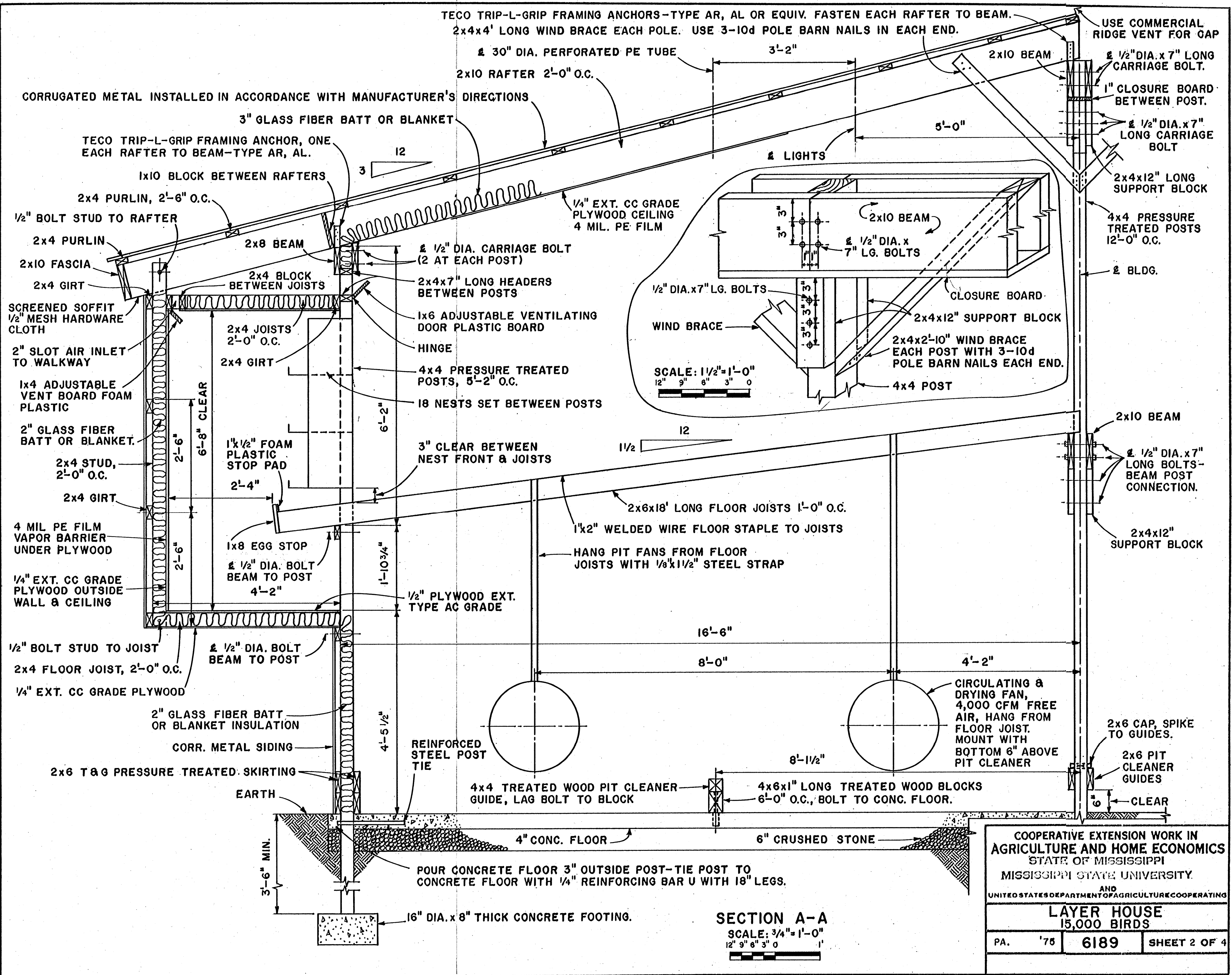


PERSPECTIVE

NOTE:  
SLOPING WIRE FLOOR, FAN  
VENTILATION & MANURE DRYING.

COOPERATIVE EXTENSION WORK IN AGRICULTURE AND HOME ECONOMICS		
STATE OF MISSISSIPPI		
MISSISSIPPI STATE UNIVERSITY		
AND UNITED STATES DEPARTMENT OF AGRICULTURE COOPERATING		
<b>LAYER HOUSE</b> 15,000 BIRDS		
PA. '75	<b>6189</b>	SHEET 1 OF 4

BASED ON: PENN. STATE UNIV. PLAN NO. 727-362



TECO TRIP-L-GRIP FRAMING ANCHORS—TYPE AR, AL OR EQUIV. FASTEN EACH RAFTER TO BEAM.  
 2x4x4' LONG WIND BRACE EACH POLE. USE 3-10d POLE BARN NAILS IN EACH END.

USE COMMERCIAL RIDGE VENT FOR GAP  
 1/2" DIA. x 7" LONG CARRIAGE BOLT.  
 1" CLOSURE BOARD BETWEEN POST.  
 1/2" DIA. x 7" LONG CARRIAGE BOLT

CORRUGATED METAL INSTALLED IN ACCORDANCE WITH MANUFACTURER'S DIRECTIONS

3" GLASS FIBER BATT OR BLANKET

TECO TRIP-L-GRIP FRAMING ANCHOR, ONE EACH RAFTER TO BEAM—TYPE AR, AL.

1x10 BLOCK BETWEEN RAFTERS

2x4 PURLIN, 2'-6" O.C.

1/2" BOLT STUD TO RAFTER

2x4 PURLIN

2x10 FASCIA

2x4 GIRT

SCREENED SOFFIT 1/2" MESH HARDWARE CLOTH

2" SLOT AIR INLET TO WALKWAY

1x4 ADJUSTABLE VENT BOARD FOAM PLASTIC

2" GLASS FIBER BATT OR BLANKET.

2x4 STUD, 2'-0" O.C.

2x4 GIRT

4 MIL PE FILM VAPOR BARRIER UNDER PLYWOOD

1/4" EXT. CC GRADE PLYWOOD OUTSIDE WALL & CEILING

1/2" BOLT STUD TO JOIST

2x4 FLOOR JOIST, 2'-0" O.C.

1/4" EXT. CC GRADE PLYWOOD

2" GLASS FIBER BATT OR BLANKET INSULATION

CORR. METAL SIDING

2x6 T&G PRESSURE TREATED SKIRTING

EARTH

3'-6" MIN.

POUR CONCRETE FLOOR 3" OUTSIDE POST—TIE POST TO CONCRETE FLOOR WITH 1/4" REINFORCING BAR U WITH 18" LEGS.

16" DIA. x 8" THICK CONCRETE FOOTING.

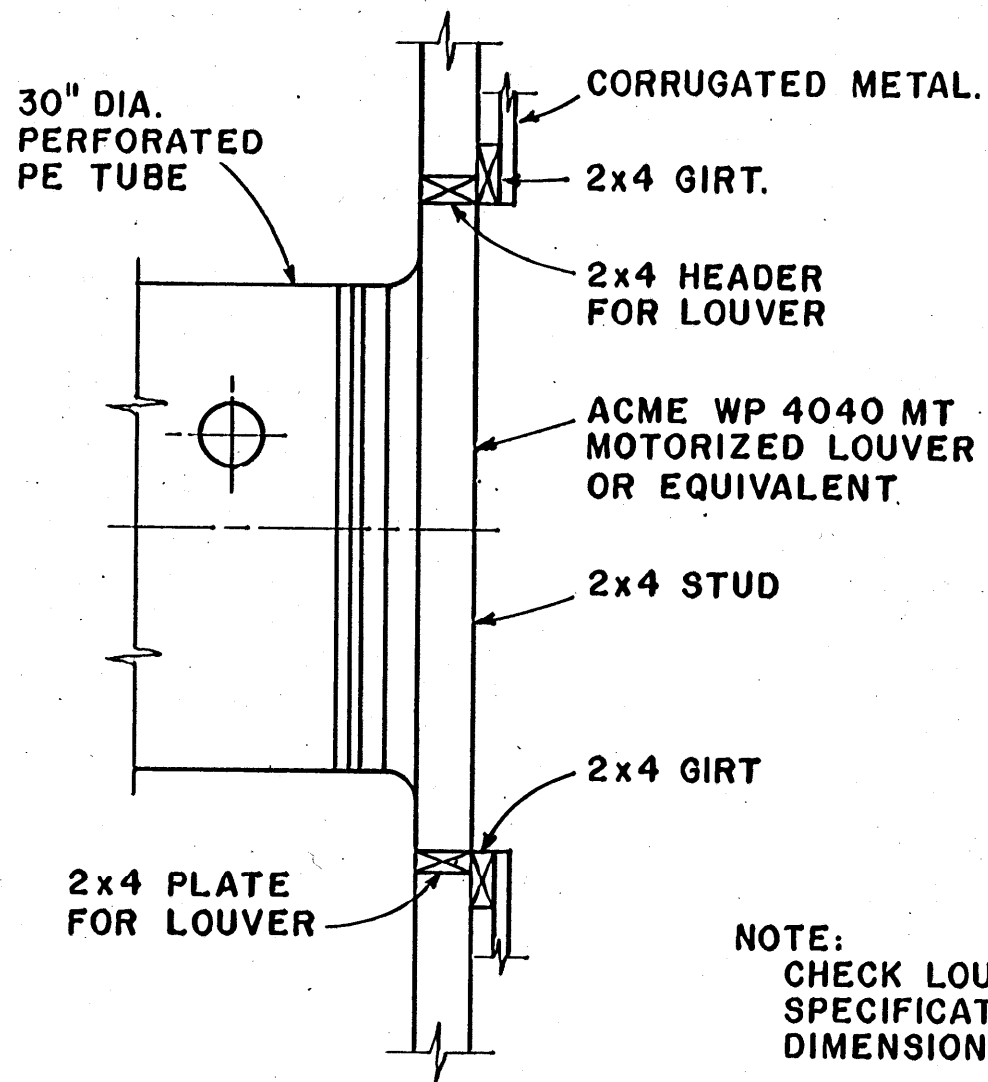
SECTION A-A

SCALE: 3/4" = 1'-0"  
 12" 9" 6" 3" 0"

COOPERATIVE EXTENSION WORK IN AGRICULTURE AND HOME ECONOMICS  
 STATE OF MISSISSIPPI  
 MISSISSIPPI STATE UNIVERSITY  
 AND  
 UNITED STATES DEPARTMENT OF AGRICULTURE COOPERATING

**LAYER HOUSE**  
 15,000 BIRDS

PA.	'75	6189	SHEET 2 OF 4
-----	-----	------	--------------



NOTE:  
CHECK LOUVER MANUFACTURERS  
SPECIFICATIONS FOR EXACT  
DIMENSIONS.

INTAKE LOUVER FRAMING DETAIL

**VENTILATION CONTROL SEQUENCE**

1. CENTER EXHAUST FAN ON EACH SIDE ON LOW SPEED CONT. LOUVERS IN EACH END OPEN. SLOT INLETS CLOSED. 7,500 CFM.
2. CENTER EXHAUST FANS SWITCH TO HIGH SPEED. 15,000 CFM.
3. TWO SINGLE SPEED FANS ON. 30,000 CFM.
4. TWO SINGLE SPEED FANS ON. SLOT INLETS OPEN. 45,000 CFM.
5. TWO SINGLE SPEED FANS ON. 60,000 CFM.
6. TWO SINGLE SPEED FANS ON. 75,000 CFM.

**EQUIPMENT**

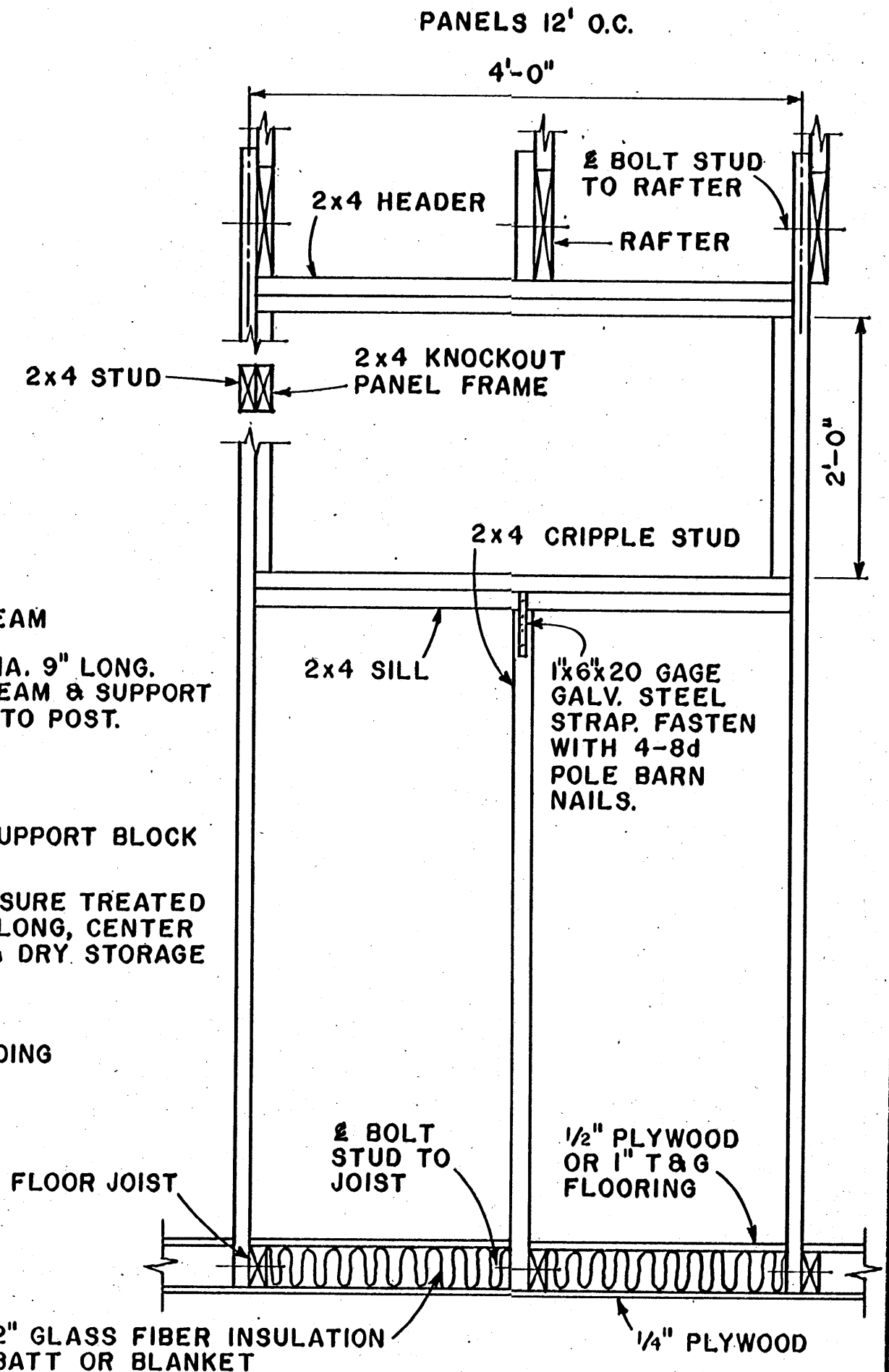
- FANS: 2 ACME DC 30G 25 (TWO SPEED) 15,000 CFM.  
8 ACME DC 30G (SINGLE SPEED) 60,000 CFM.
- LOUVERS: 4 ACME WP 4040 MT MOTORIZED INLET (20,000 CFM) SHUTTER FOR 30" DIA. PE INLET TUBE

**OR EQUIVALENT EQUIPMENT**

CONTROL FANS & LOUVERS WITH 3-2 STAGE THERMOSTATS PROVIDE 200 AMP ELECTRIC SERVICE TO THE BUILDING.

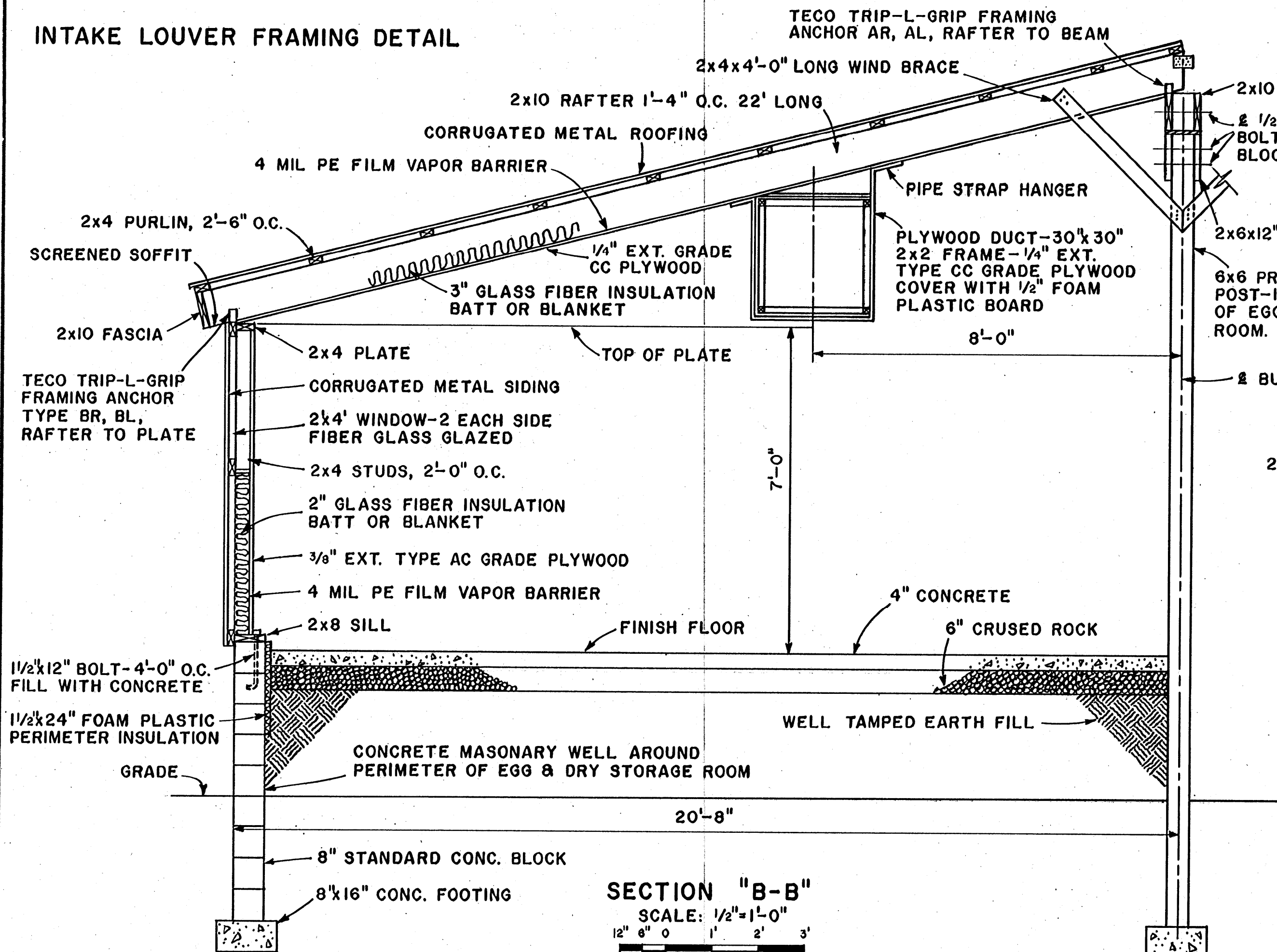
**NOTE:**

SET KNOCKOUT PANEL IN FRAMED OPENING. SECURE WITH 4 BUTTONS, ONE CENTERED EACH SIDE ON INSIDE WALL. LAP CORRUGATED METAL ON SIDES, LAP 2" ON BOTTOM, EXTEND TO SOFFIT.



EMERGENCY KNOCKOUT PANEL DETAIL

SCALE: 1" = 1'-0" UNLESS OTHERWISE NOTED  
12" 9" 6" 3" 0" 1"

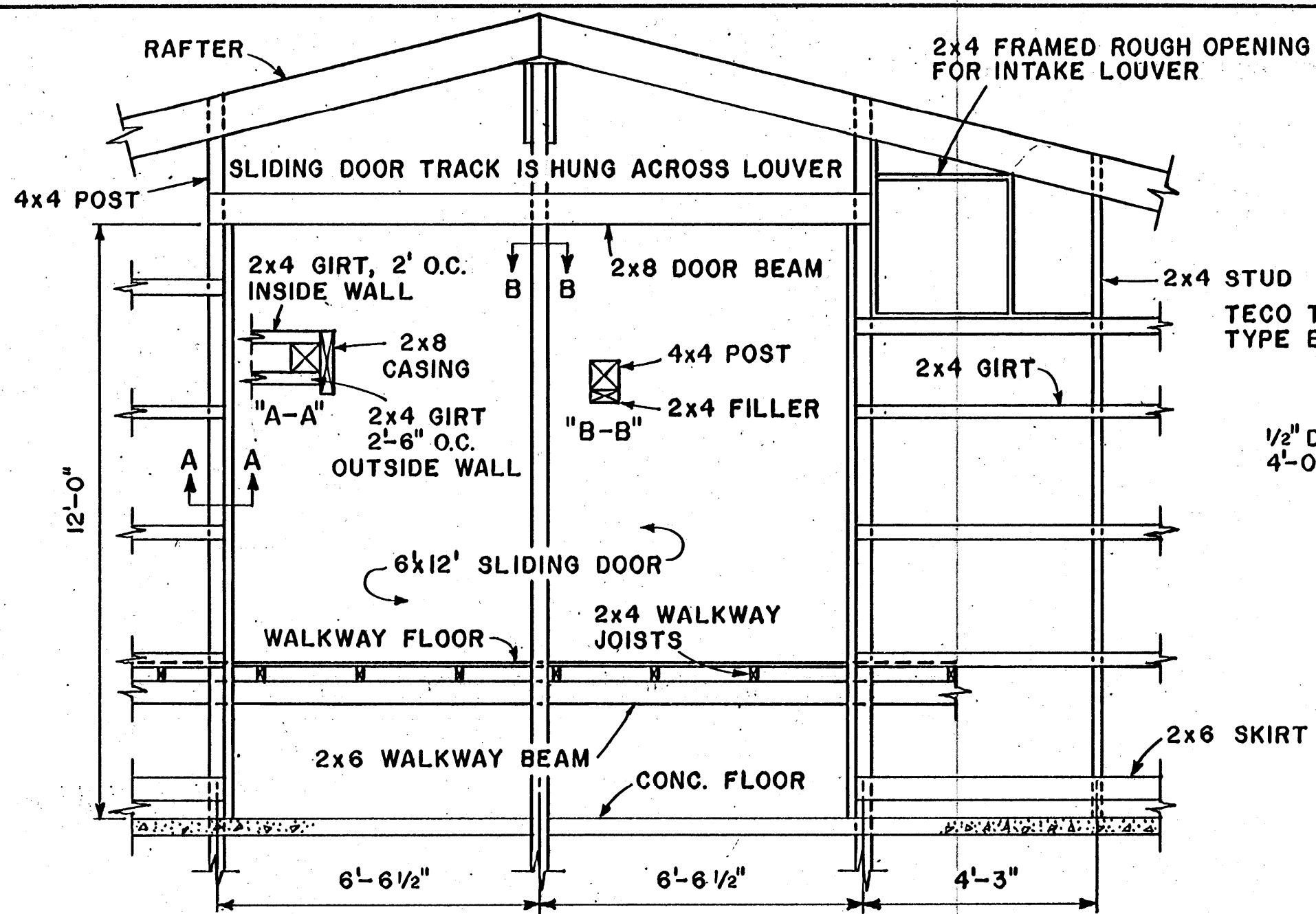


SECTION "B-B"  
SCALE: 1/2" = 1'-0"  
12" 6" 0" 1' 2' 3'

COOPERATIVE EXTENSION WORK IN  
AGRICULTURE AND HOME ECONOMICS  
STATE OF MISSISSIPPI  
MISSISSIPPI STATE UNIVERSITY  
AND  
UNITED STATES DEPARTMENT OF AGRICULTURE COOPERATING

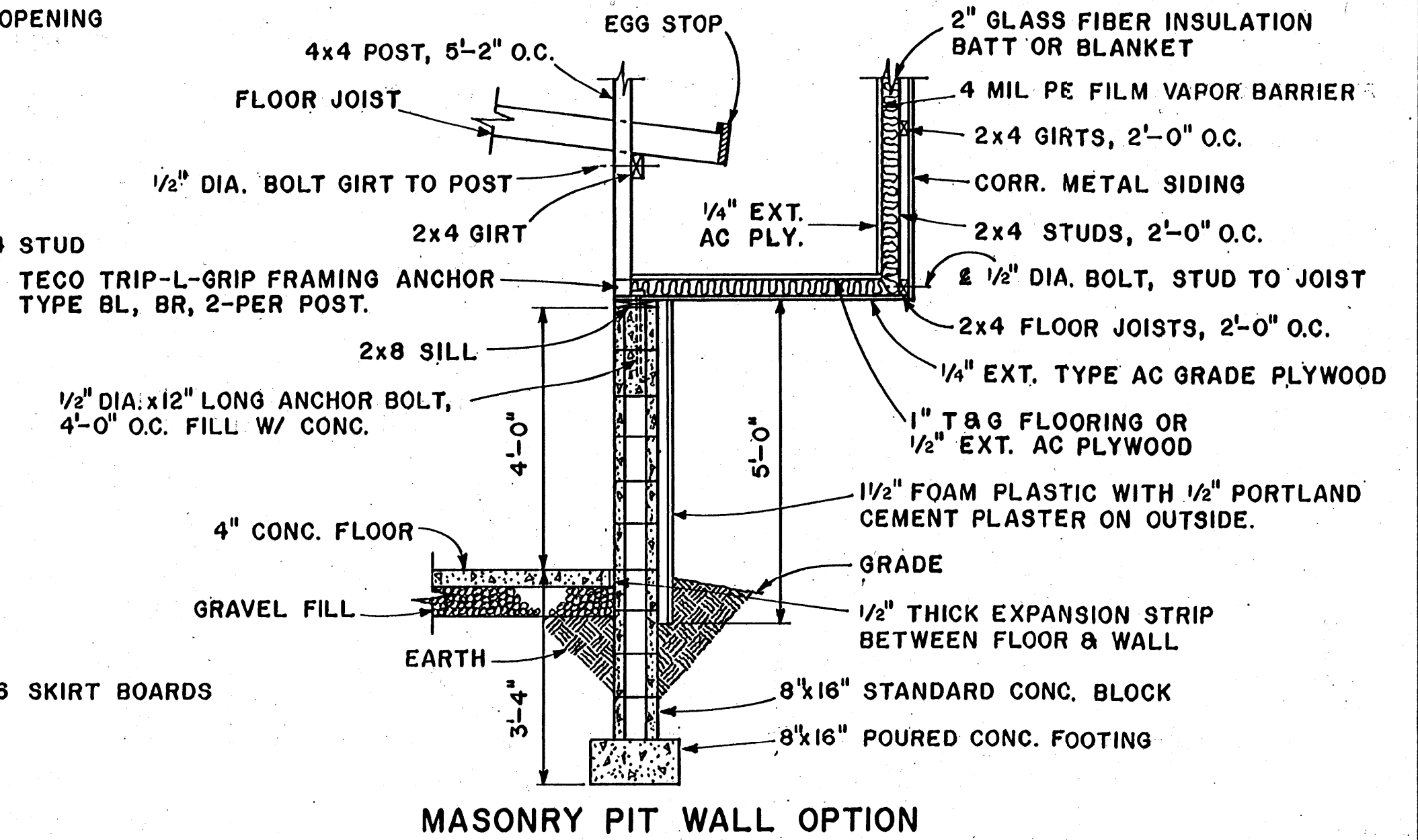
**LAYER HOUSE**  
15,000 BIRDS

PA.	'75	6189	SHEET 3 OF 4
-----	-----	------	--------------

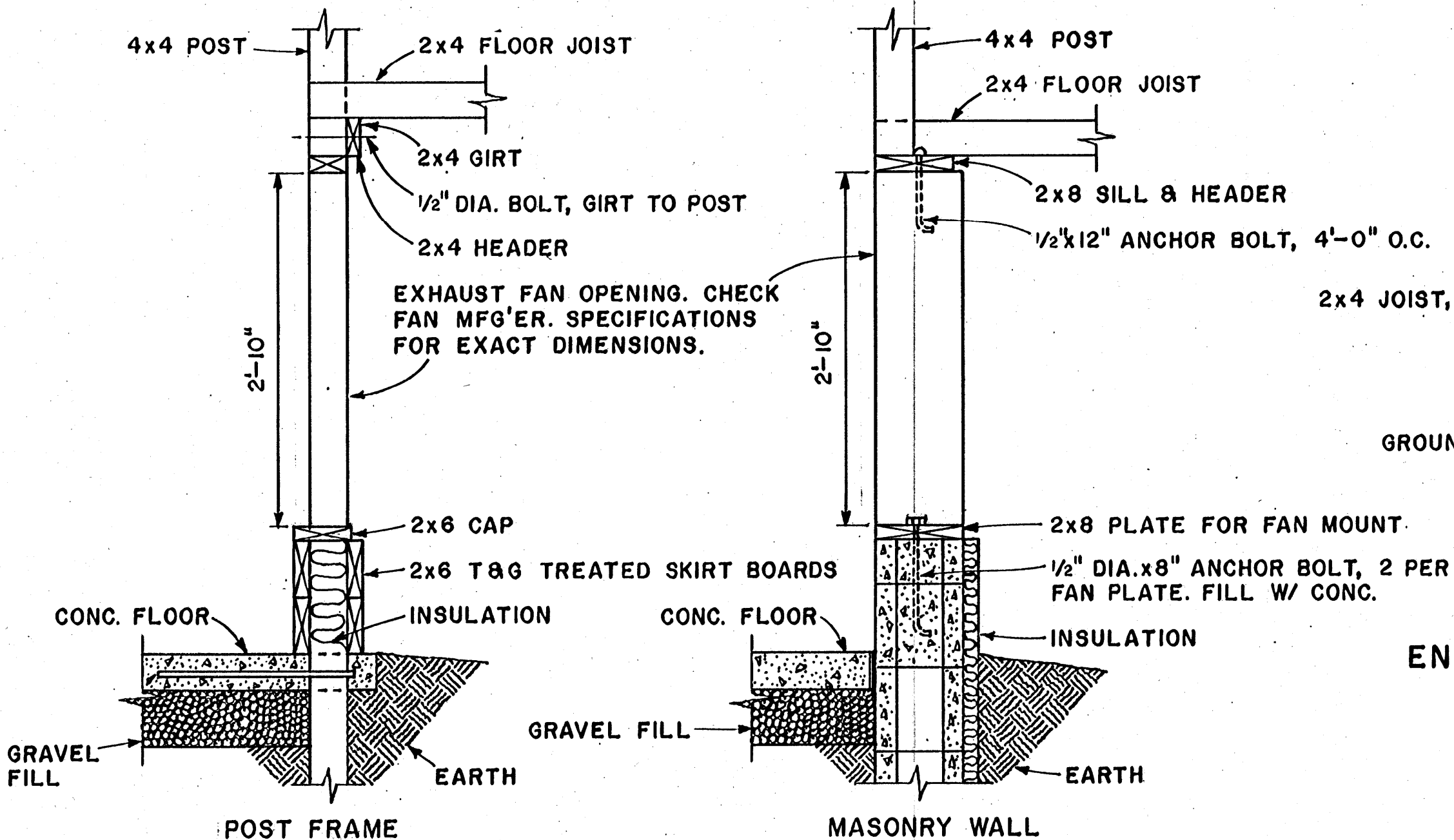


**END & DOOR FRAMING**

SCALE: 3/8" = 1'-0"  
12" 6" 0" 1' 2' 3'

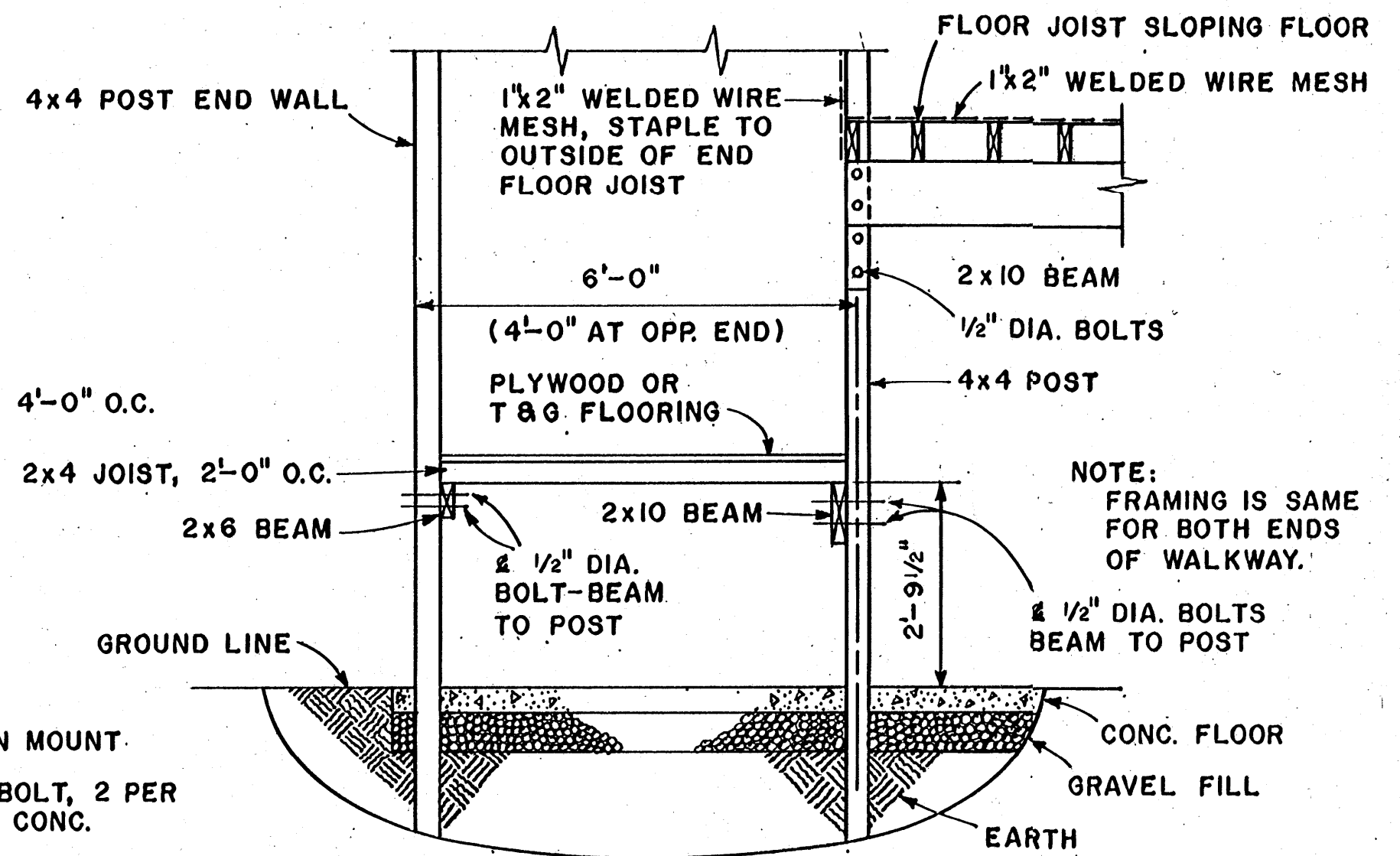


**MASONRY PIT WALL OPTION**



**FAN OPENING DETAILS**

SCALE: 1" = 1'-0"  
12" 9" 6" 3" 0" 1'



**END WALKWAY FRAMING DETAIL AT & BUILDING**

SCALE: 1/2" = 1'-0" UNLESS OTHERWISE NOTED.  
12" 6" 0" 1' 2' 3'

COOPERATIVE EXTENSION WORK IN  
AGRICULTURE AND HOME ECONOMICS  
STATE OF MISSISSIPPI  
MISSISSIPPI STATE UNIVERSITY  
AND  
UNITED STATES DEPARTMENT OF AGRICULTURE COOPERATING

**LAYER HOUSE**  
15,000 BIRDS

PA. '75 6189 SHEET 4 OF 4