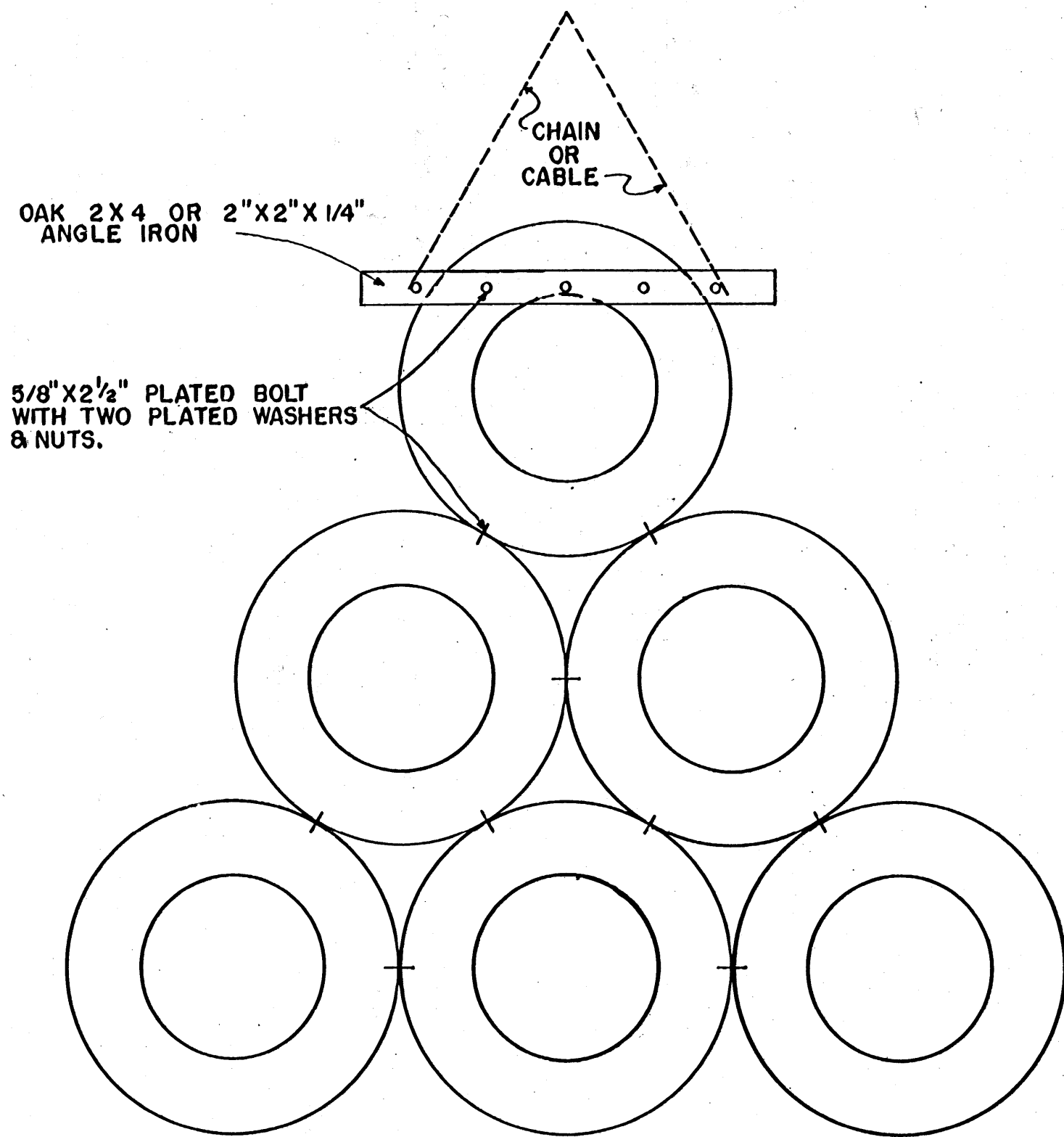


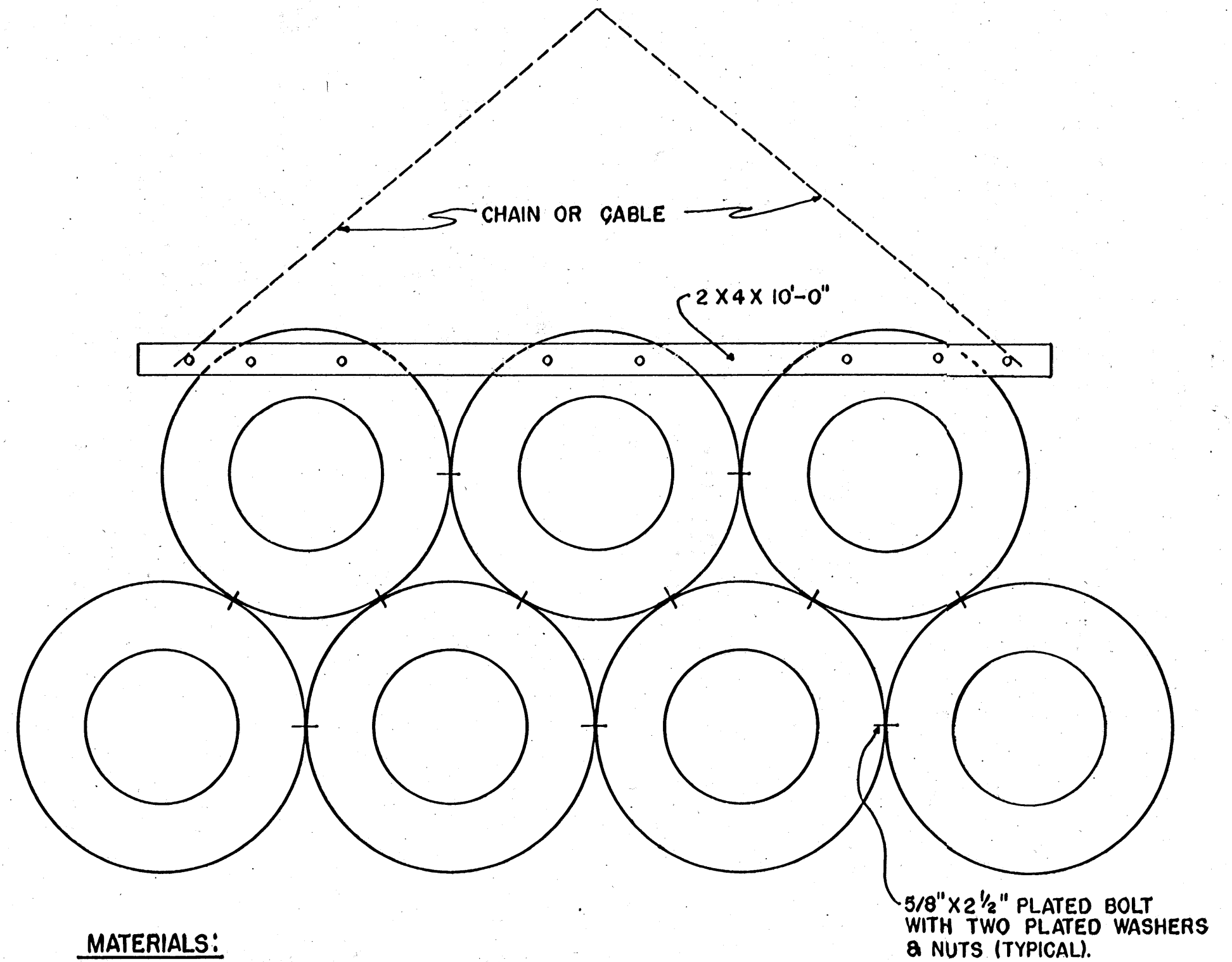
PLAN NO 1



MATERIALS:

- 6 - TIRES, PREFERABLY TRUCK TYPE (610.00).
- 1 - OAK 2 X 4 OR 2" X 2" X 1/4" ANGLE IRON.
- 14 - 5/8" X 2 1/2" X 3" PLATED BOLTS.
- 28 - LARGE PLATED WASHERS.

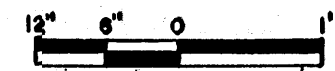
PLAN NO 2



MATERIALS:

- 7 - TIRES - PREFERABLY TRUCK TYPE (900-20 OR 825-20).
- 1 - TREATED 2 X 4.
- 19 - 5/8" X 2 1/2" X 3" PLATED BOLTS.
- 38 - LARGE PLATED WASHERS.

BASED ON: AUBURN UNIV. PLAN NO. G-408



SCALE: 3/4" = 1'-0" UNLESS OTHERWISE NOTED.

COOPERATIVE EXTENSION WORK IN
 AGRICULTURE AND HOME ECONOMICS
 STATE OF MISSISSIPPI
 MISSISSIPPI STATE UNIVERSITY
 AND
 UNITED STATES DEPARTMENT OF AGRICULTURE COOPERATING

PASTURE DRAG

ALA. '75 6212 SHEET 1 OF 1