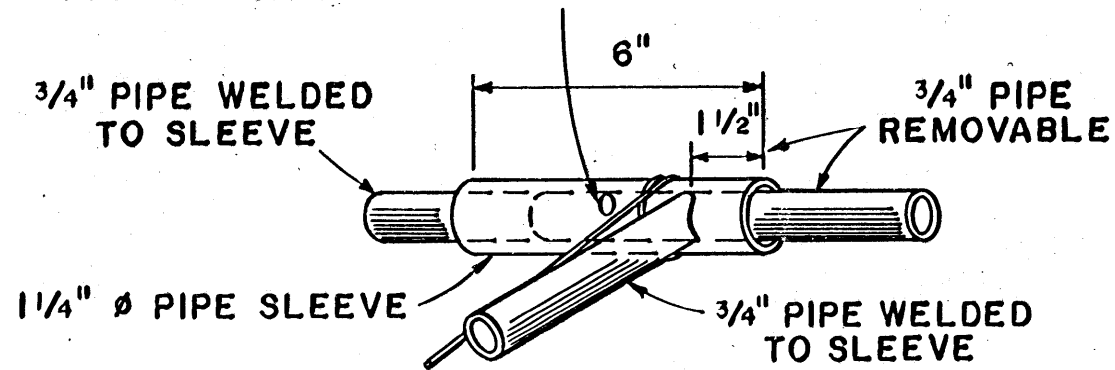
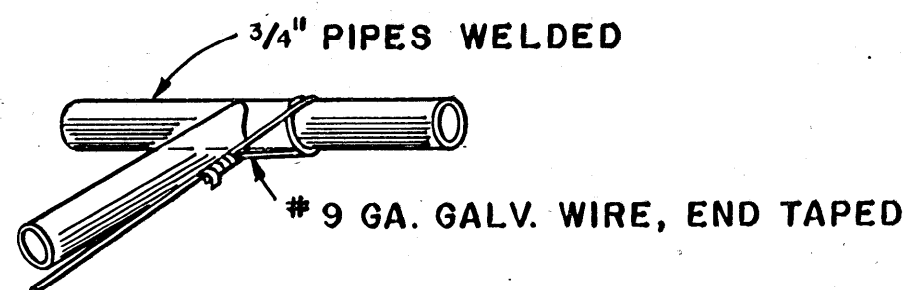


PIN IN 2 SIDE PIPES ONLY

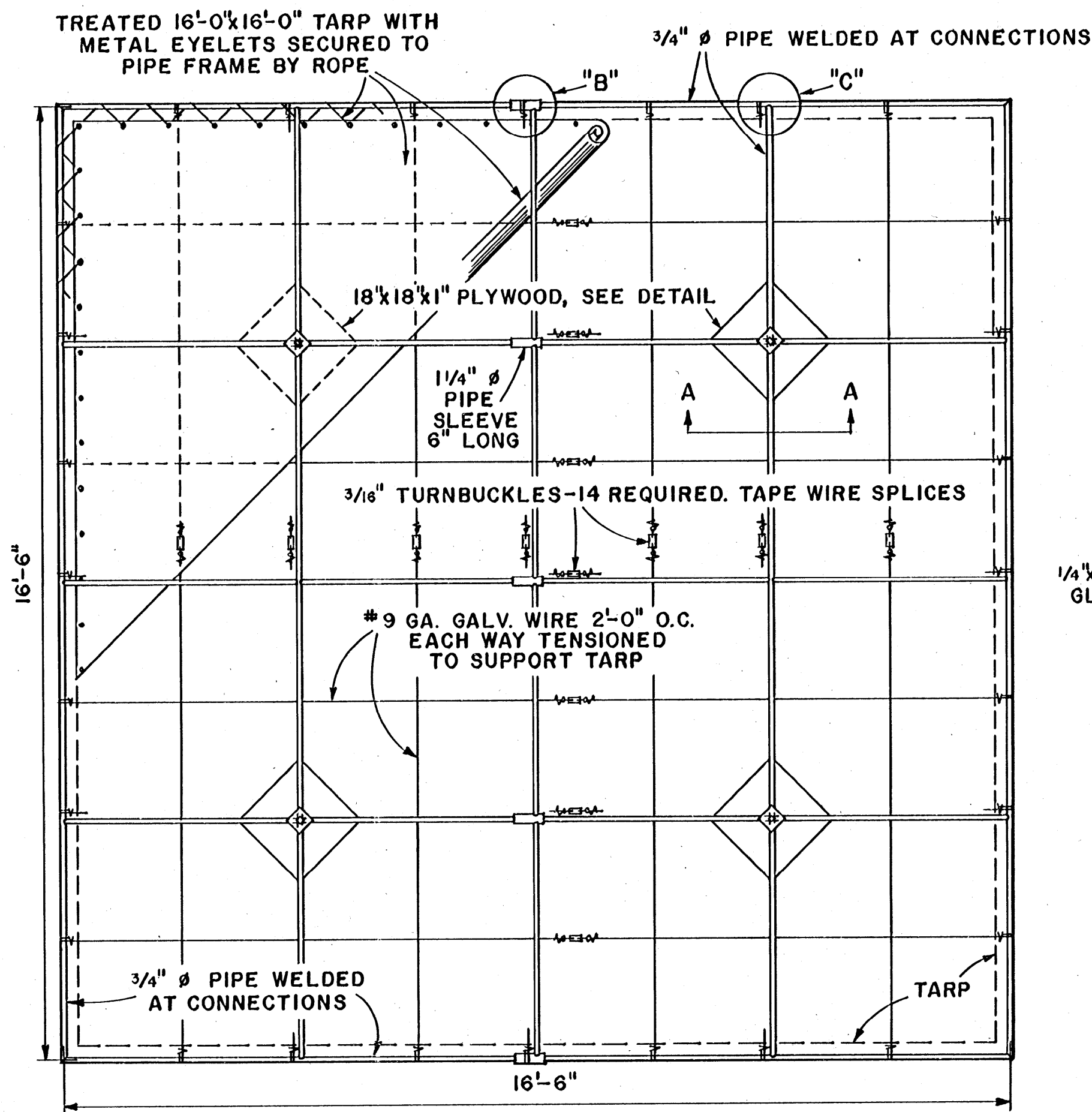


DETAIL "B"



DETAIL "C"

ISOMETRIC VIEWS

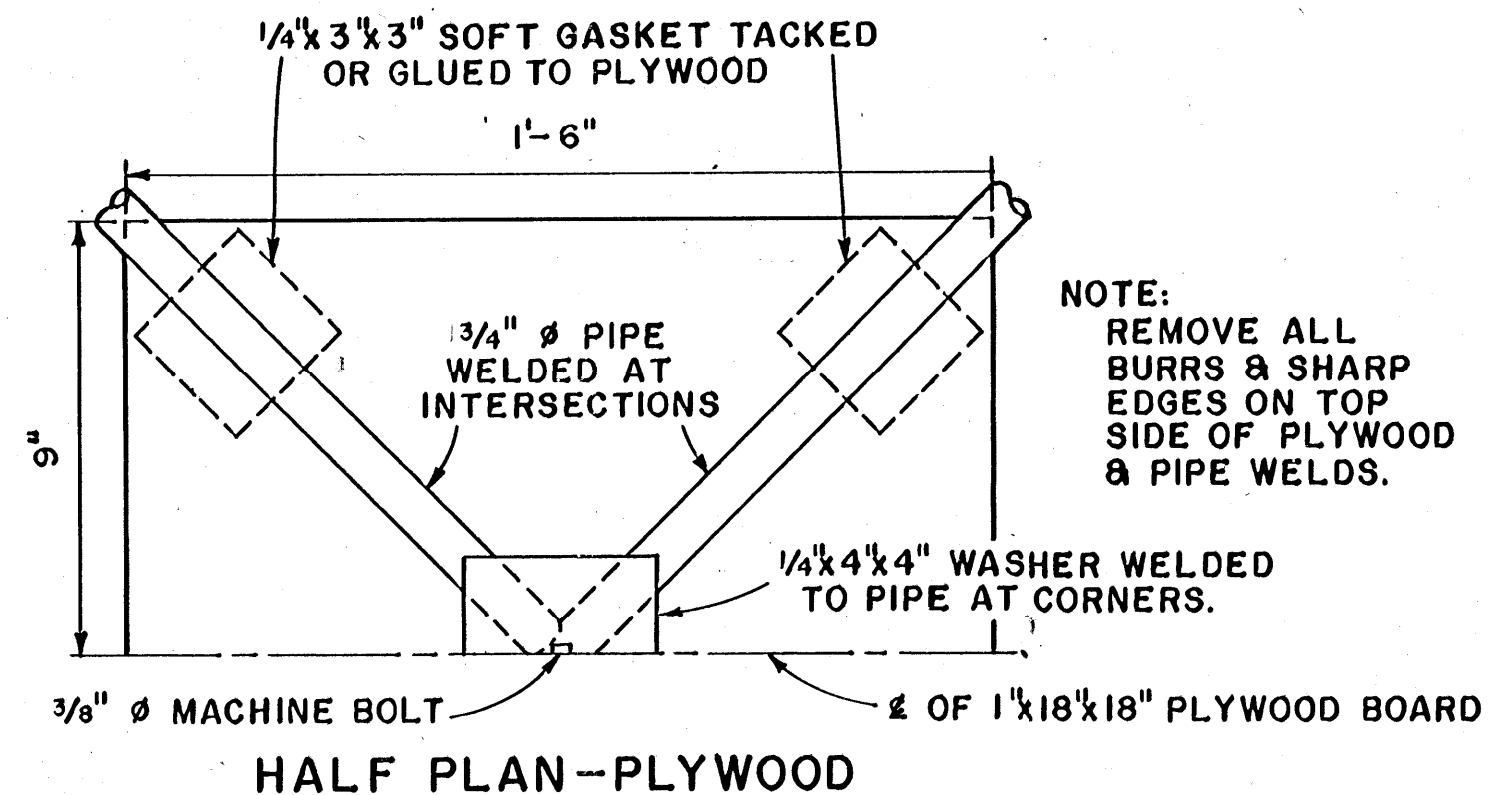


PLAN OF FRAME

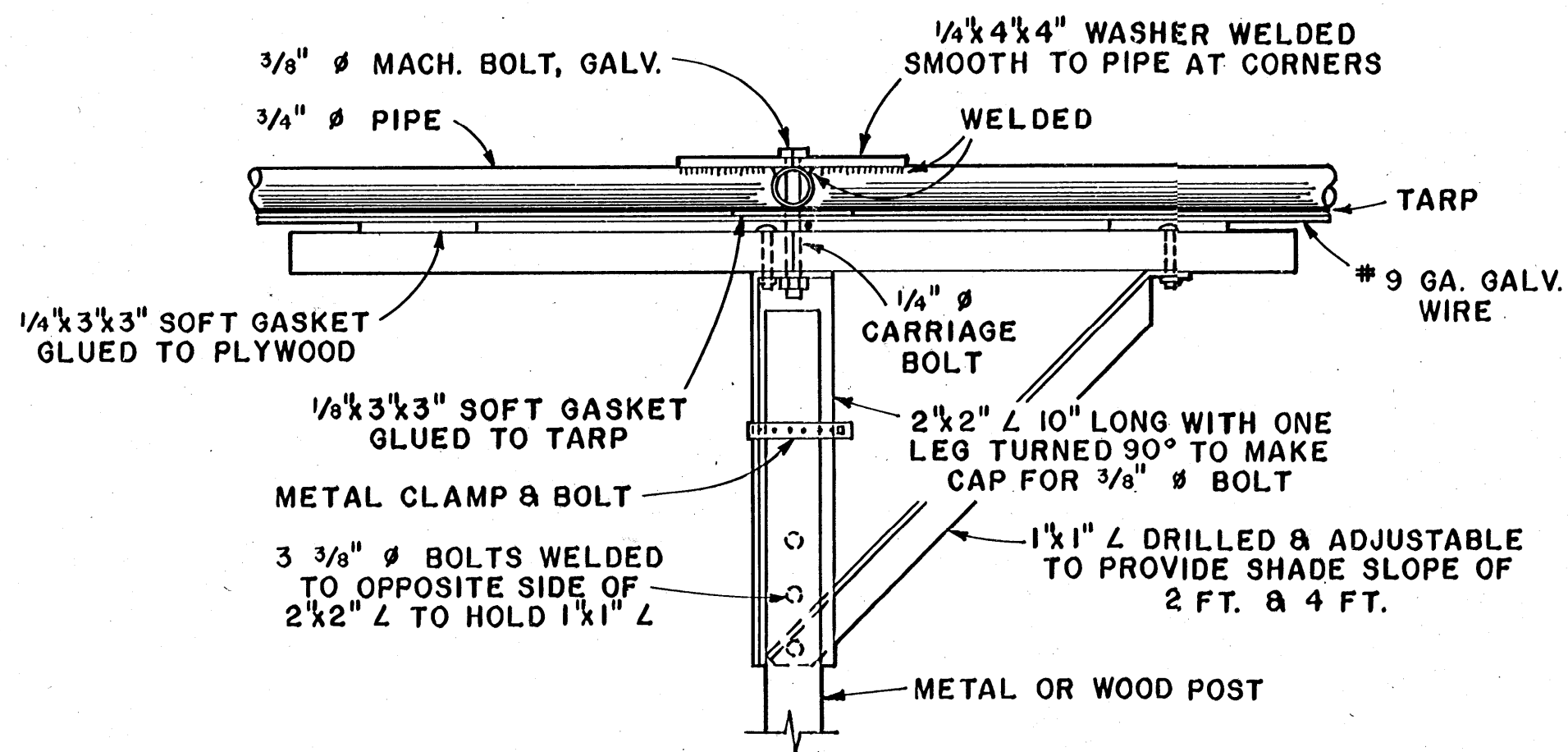
SCALE: 1/2" = 1'-0"
12" 6" 0 1' 2'

ERECTION

ASSEMBLE FRAME, TARP & #9 GA. WIRE 2'-0"x2'-0" GRID. LOCATE (±1") POSTS & SET FOR DESIRED SLOPE OF TARP. LOOSELY CLAMP CAPS ON POSTS. SET TARP & FRAME ON CAPS, BOLT PIPE FRAME TO CAPS, THEN PULL CAP DOWN ON POST & TIGHTEN CLAMP. CHECK TARP DIMENSIONS UNDER TENSION WHILE WARM BEFORE WELDING FIRST EXPERIMENTAL FRAME TO 16'-6". LEAVE NO SHARP KINKS IN NO. 9 WIRE GRID TO INJURE TARP.



NOTE: REMOVE ALL BURRS & SHARP EDGES ON TOP SIDE OF PLYWOOD & PIPE WELDS.



SECTION A-A

6" 5" 4" 3" 2" 1" 0
SCALE: 3" = 1'-0" UNLESS OTHERWISE NOTED

COOPERATIVE EXTENSION WORK IN AGRICULTURE AND HOME ECONOMICS
STATE OF MISSISSIPPI
MISSISSIPPI STATE UNIVERSITY
AND
UNITED STATES DEPARTMENT OF AGRICULTURE COOPERATING

TARP HOG SHADE

USDA '76 6257 SHEET 1 OF 1