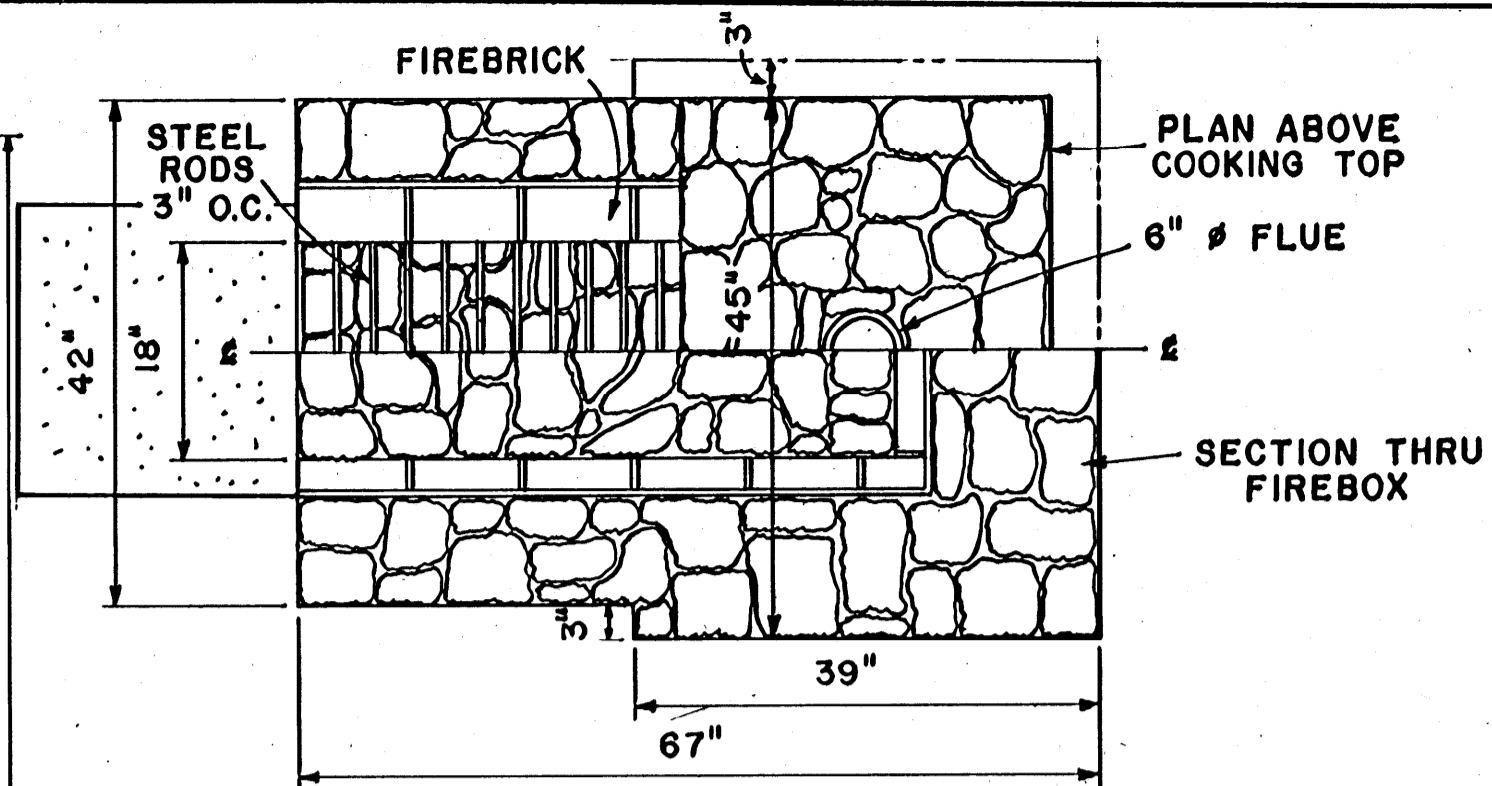


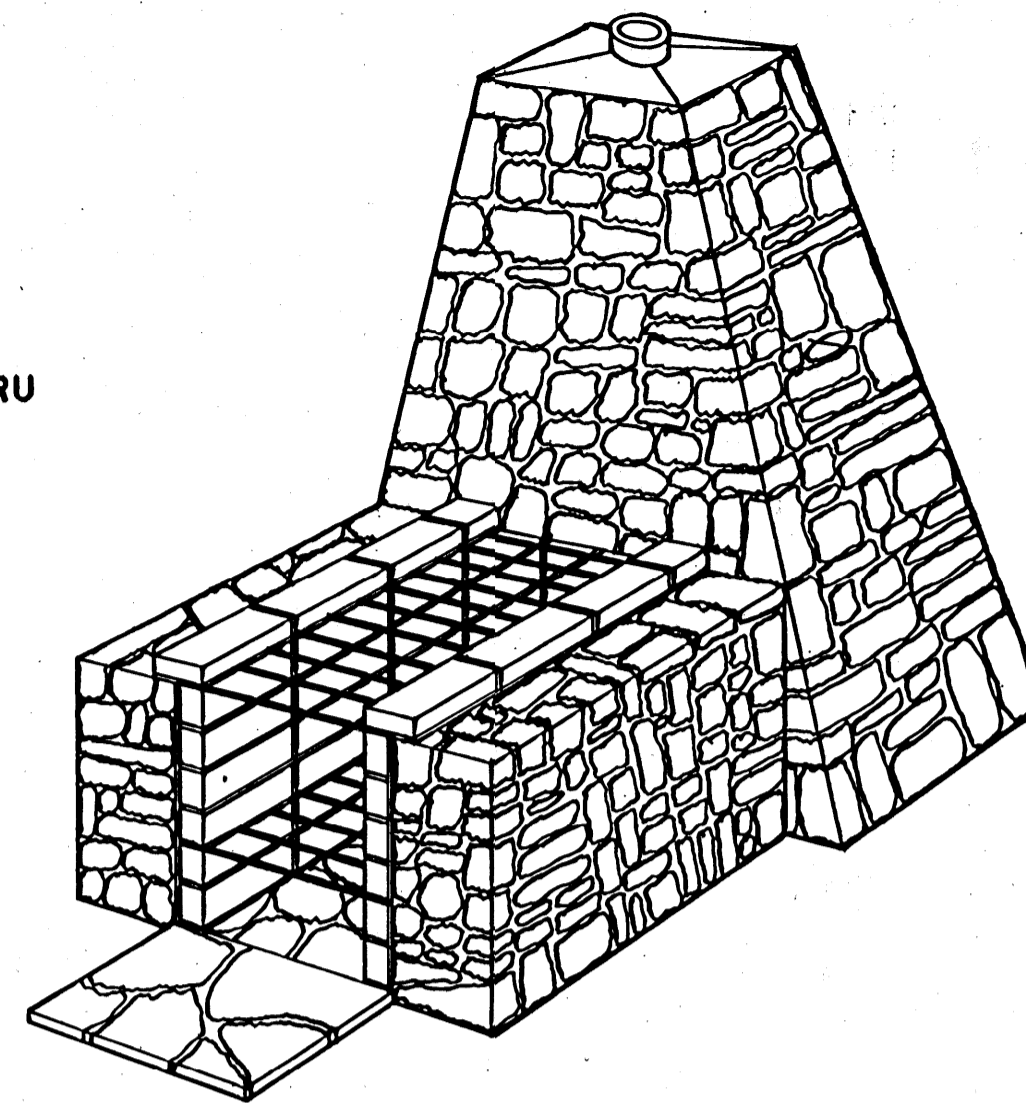
SECTION



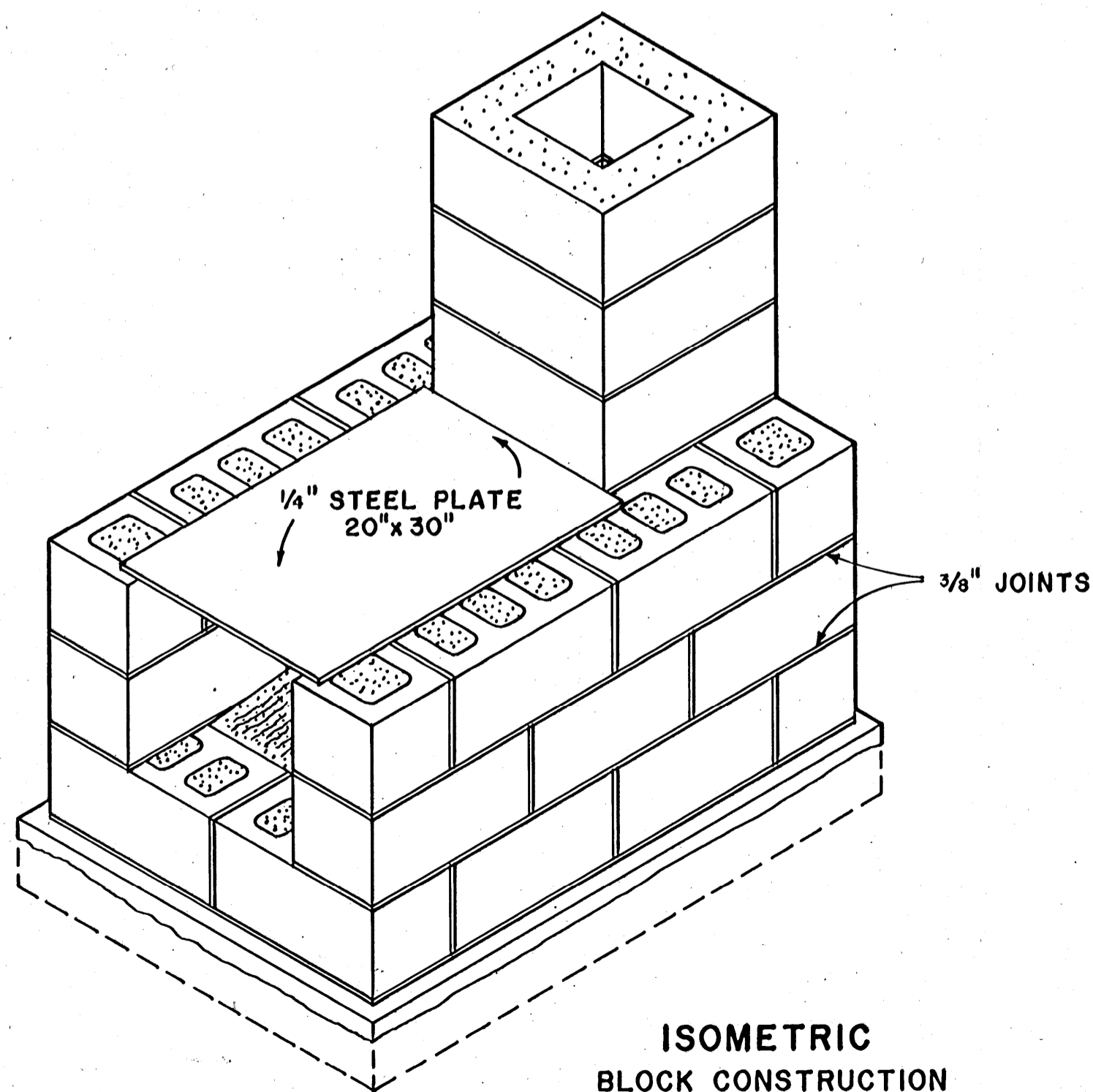
PLAN

BILL OF MATERIALS
STONE CONSTRUCTION

- 50 CU. FT. NATIVE STONE
- MORTAR: 1:3 MIX
- 5 BAGS CEMENT
- 11 CU. FT. SAND
- 98 FIREBRICK
- 3 STEEL BARS $\frac{1}{2}$ "x1"x22"
- 28 STEEL RODS $\frac{1}{2}$ " ϕ x 22"
- 1 FLUE LINING OR TILE 6" ϕ x 50"
- 1 DAMPER 6" ϕ

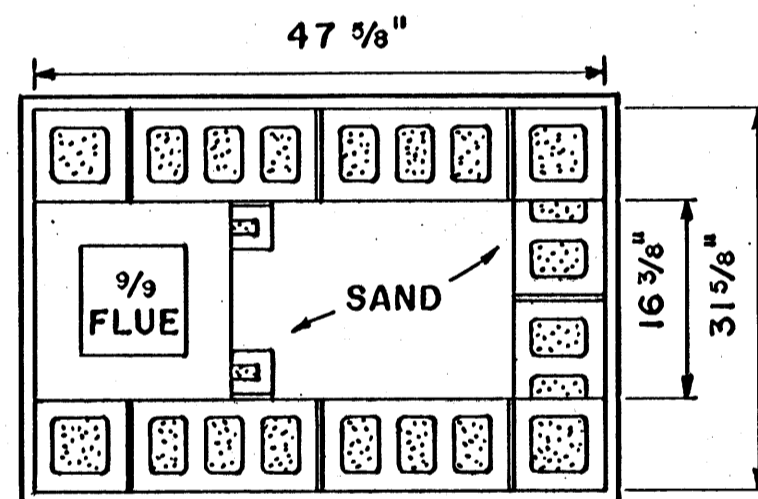


PERSPECTIVE



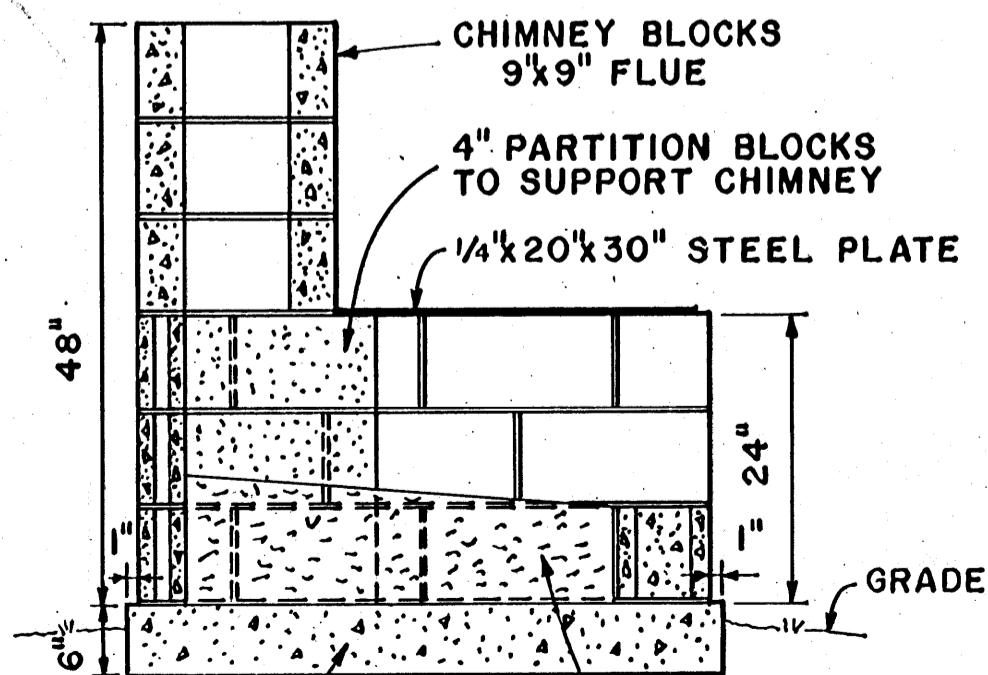
ISOMETRIC
BLOCK CONSTRUCTION

SCALE: 1"=1'-0"



PLAN

STEEL PLATE NOT SHOWN



SECTION

BILL OF MATERIALS

CONCRETE BLOCK CONSTRUCTION

- 16 REGULAR BLOCKS 8"x8"x16"
- 6 HALF BLOCKS 8"x8"x8"
- 9 PARTITION BLOCKS 4"x8"x16"
- 3 CHIMNEY BLOCKS (9"x9" OPENING 17"x8"x17")
- 1 STEEL PLATE $\frac{1}{4}$ "x20"x30"
- MORTAR:
- 1 96 LB. SACK PORTLAND CEMENT
- 100 LB. HYDRATED LIME
- 300 LB. MASON SAND
- CONCRETE BASE:
- 2 96 LB. SACKS OF PORTLAND CEMENT
- 400 LB. SAND
- 500 LB. GRAVEL OR STONE

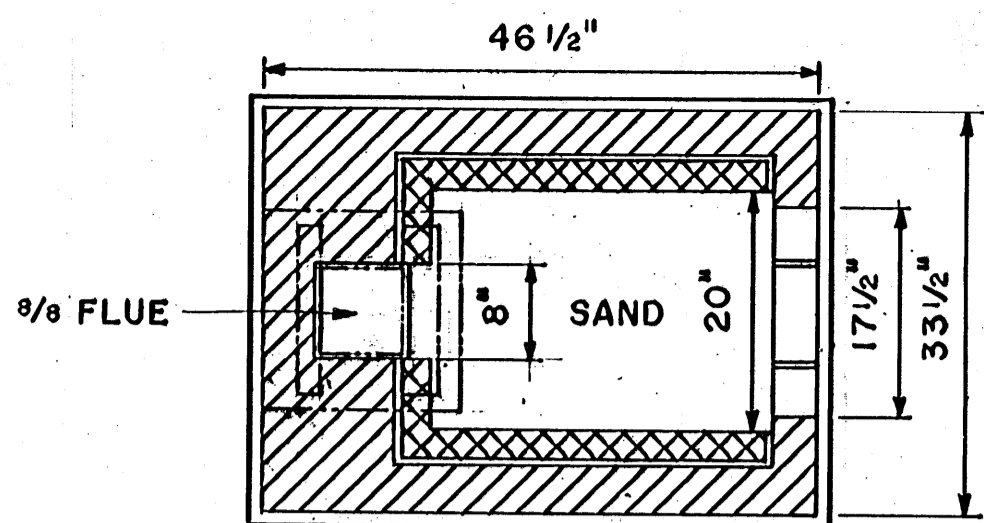
BASED ON: OREGON, VIRGINIA AND NATIONAL
PARK SERVICE PLANS.



SCALE: $\frac{3}{4}$ "=1'-0" UNLESS
OTHERWISE NOTED.

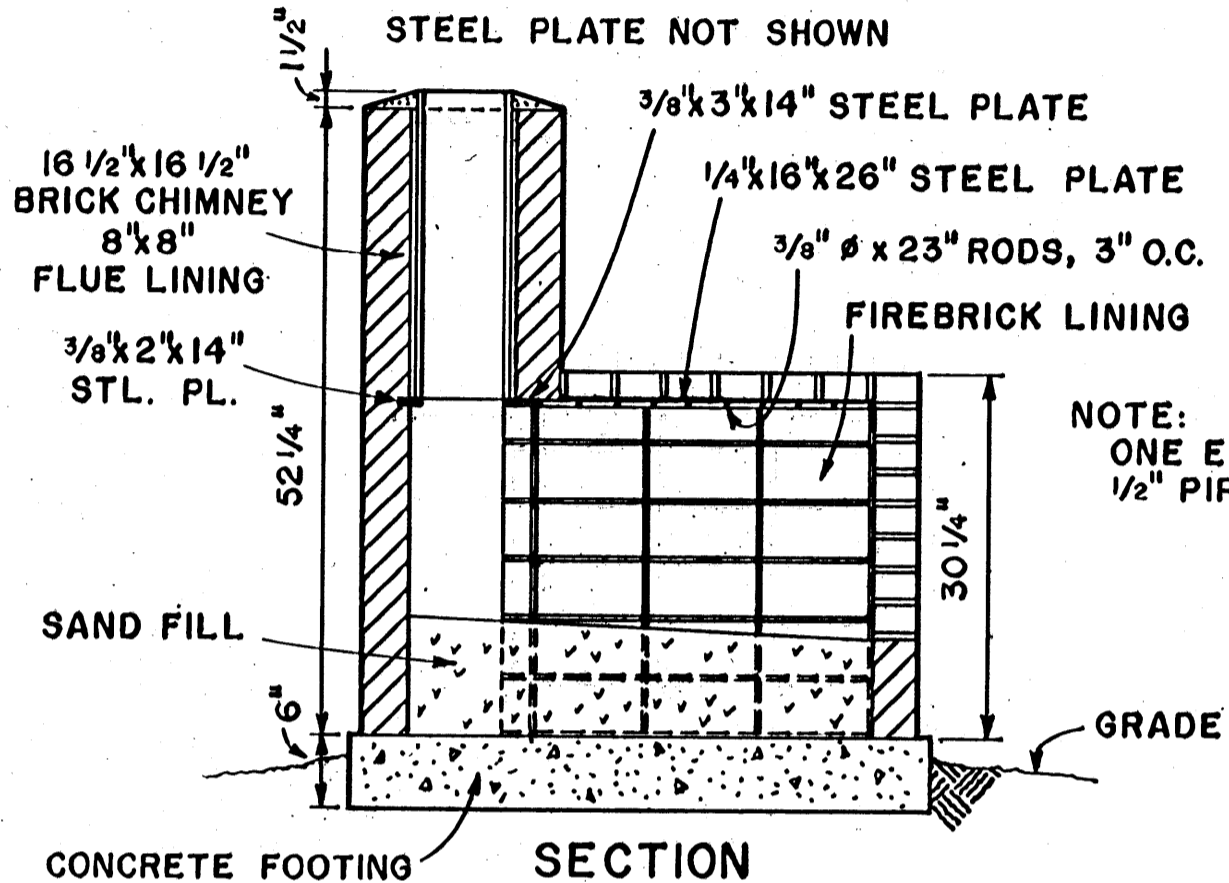
COOPERATIVE EXTENSION WORK IN
AGRICULTURE AND HOME ECONOMICS
STATE OF MISSISSIPPI
MISSISSIPPI STATE UNIVERSITY
AND
UNITED STATES DEPARTMENT OF AGRICULTURE COOPERATING

OUTDOOR FIREPLACES



PLAN

STEEL PLATE NOT SHOWN

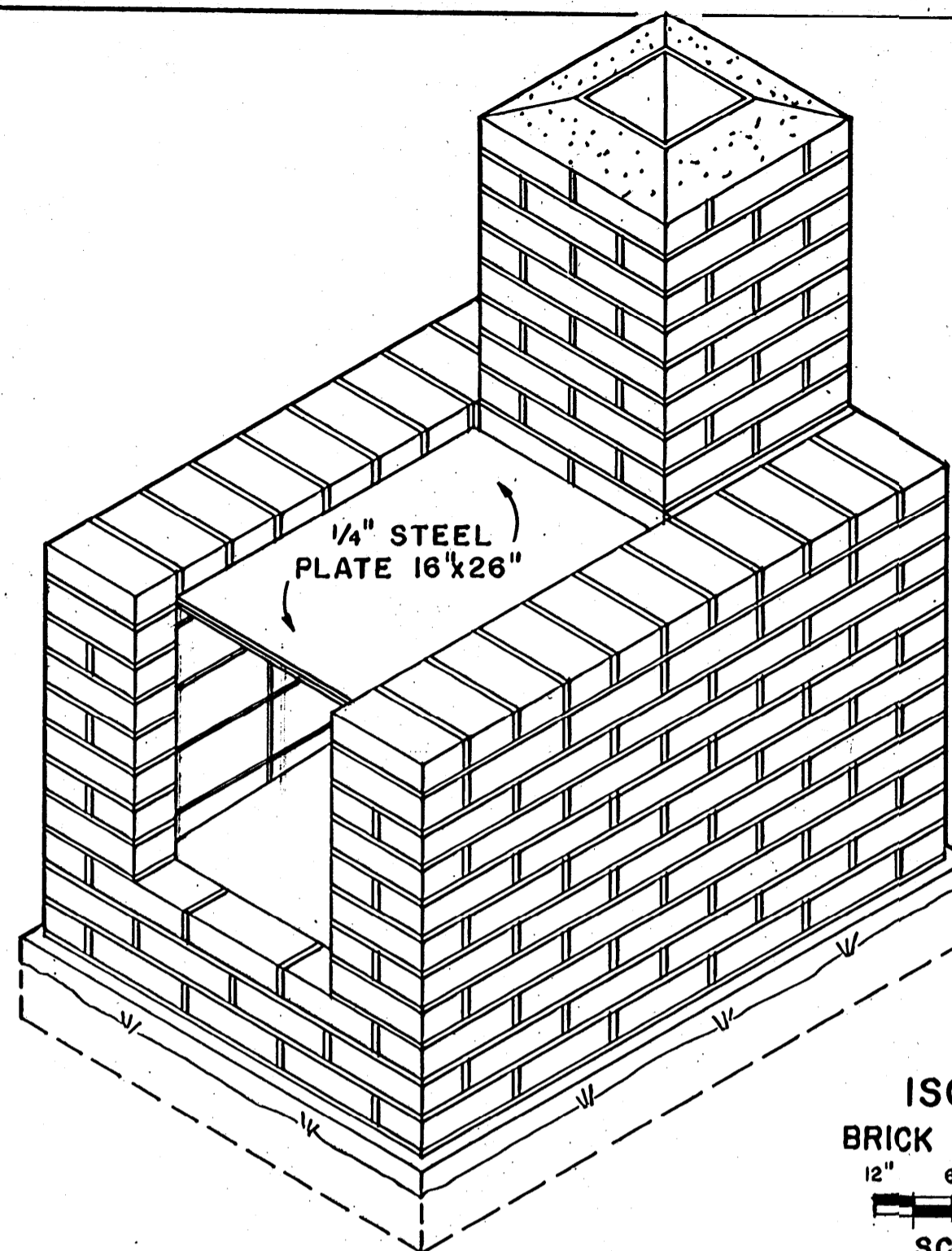


SECTION

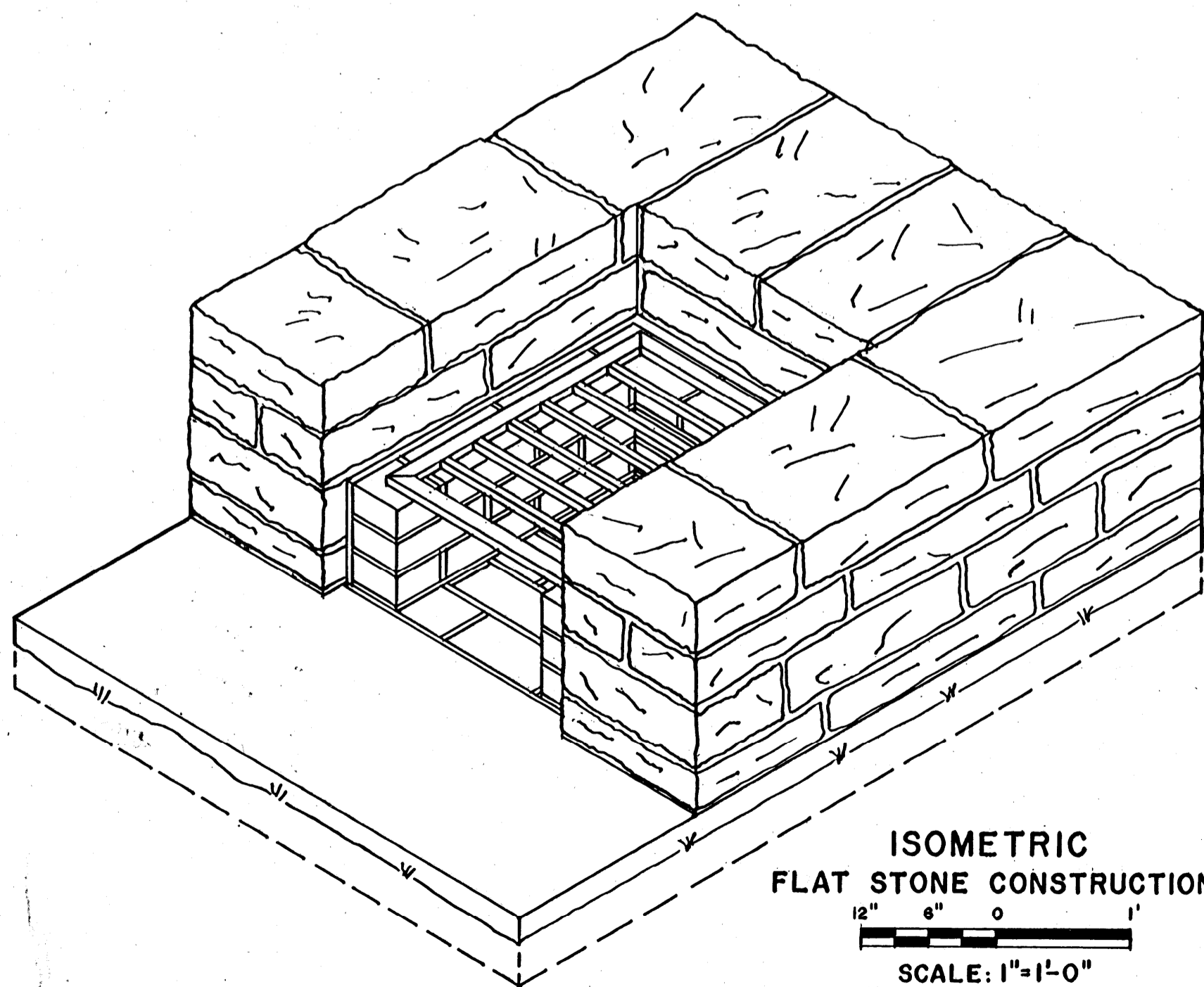
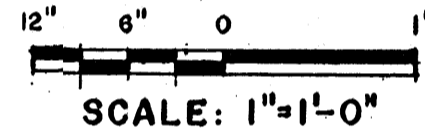
BILL OF MATERIALS

BRICK CONSTRUCTION

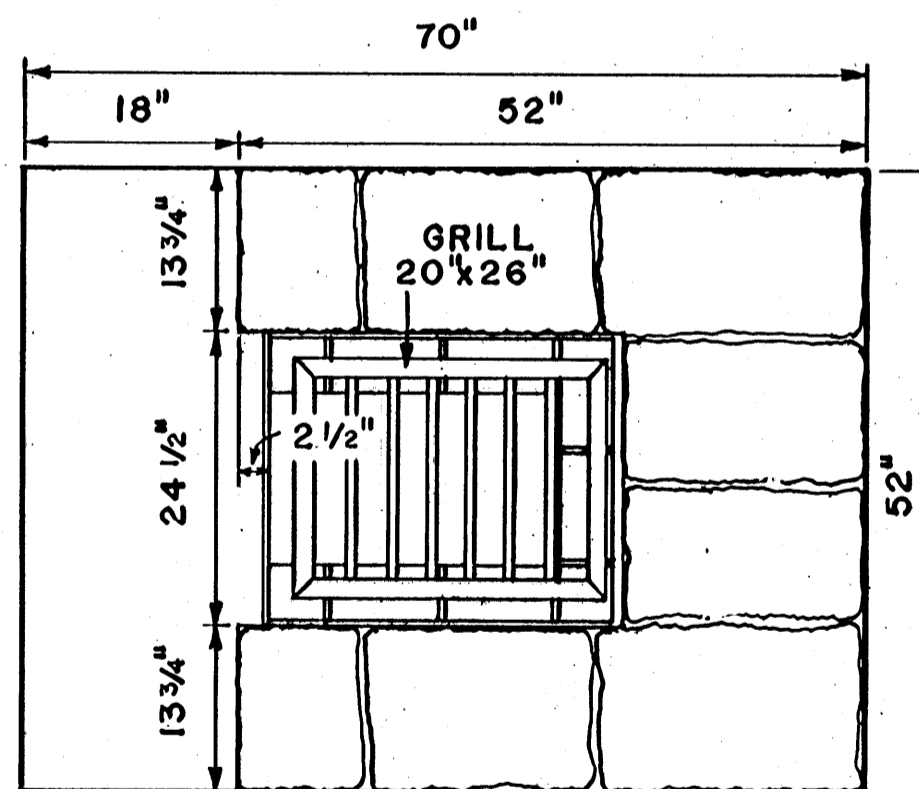
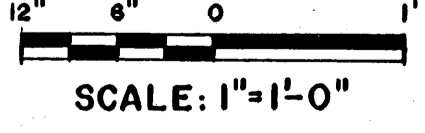
- 325 BRICK (COMMON OR FACE)
- 44 FIREBRICK
- 1 FLUE LINING 8"x8"
- 9 RODS 3/8" ϕ x 23"
- 1 STEEL PLATE 3/8"x3"x14"
- 1 STEEL PLATE 3/8"x2"x14"
- 1 STEEL PLATE 1/4"x16"x26"
- 9 PCS. OF 1/2" PIPE 3" LG.
- MORTAR:
- 2 96 LB. SACKS PORTLAND CEMENT
- 200 LB. HYDRATED LIME
- 800 LB. MASON SAND
- CONCRETE BASE:
- 2 96 LB. SACKS PORTLAND CEMENT
- 400 LB. SAND
- 500 LB. GRAVEL OR STONE



ISOMETRIC
BRICK CONSTRUCTION



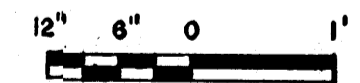
ISOMETRIC
FLAT STONE CONSTRUCTION



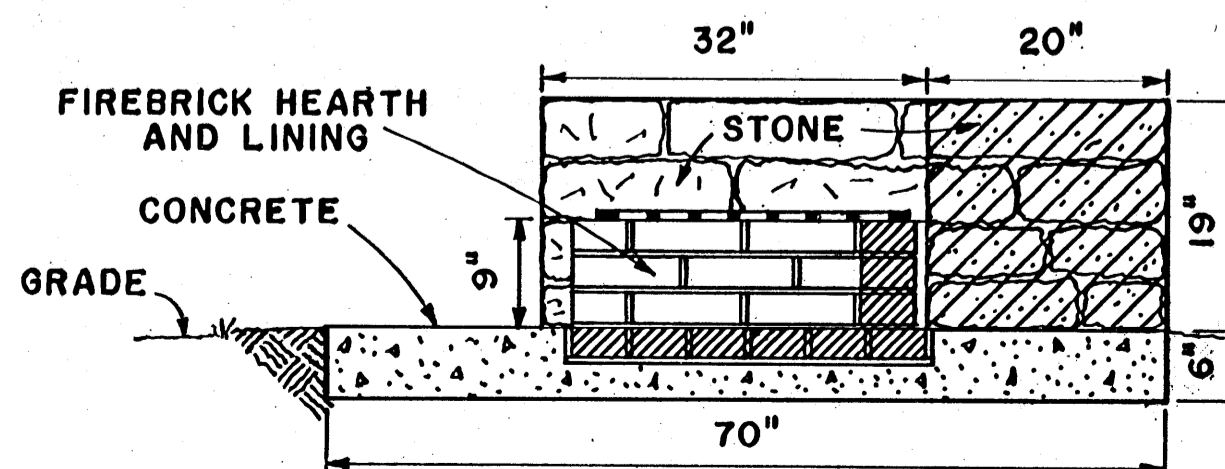
PLAN

BILL OF MATERIALS
FLAT STONE CONSTRUCTION

- 37 FIREBRICK (9"x4 1/2"x2 1/2")
- 20 CU. FT. FLAT STONE
- 2 CU. FT. MORTAR (1:3 MIX)
- 1 GRILL 20"x26"x 3/4"
- MADE FROM 3/4"x1 1/2" STEEL FRAME & 3/4" SQ. BARS COMPLETELY WELDED
- FOUNDATION: 1:2 1/4:3 MIX CEMENT-3 SACKS SAND-7 CU. FT. GRAVEL-11 1/4 CU. FT.



SCALE: 3/4"=1'-0" UNLESS OTHERWISE NOTED.



SECTION

COOPERATIVE EXTENSION WORK IN
AGRICULTURE AND HOME ECONOMICS
STATE OF MISSISSIPPI
MISSISSIPPI STATE UNIVERSITY
AND
UNITED STATES DEPARTMENT OF AGRICULTURE COOPERATING

OUTDOOR FIREPLACES