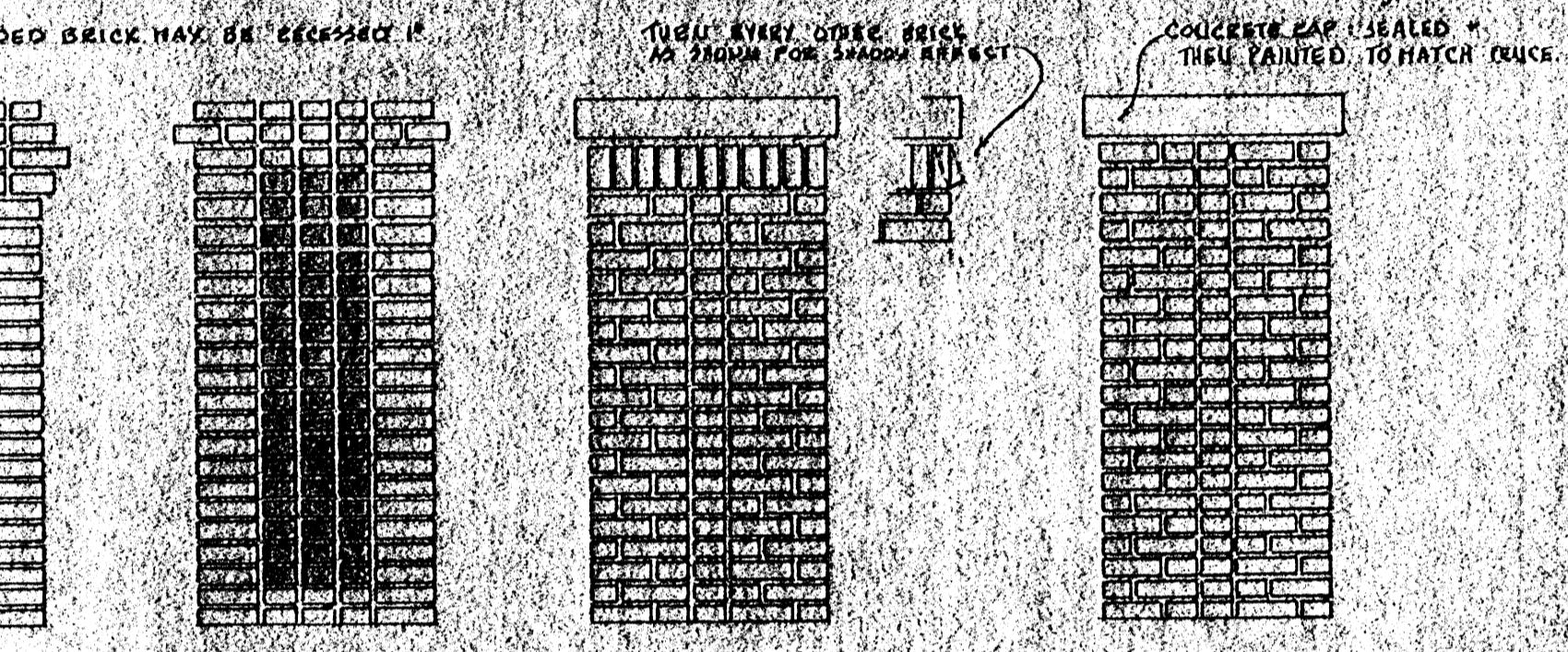
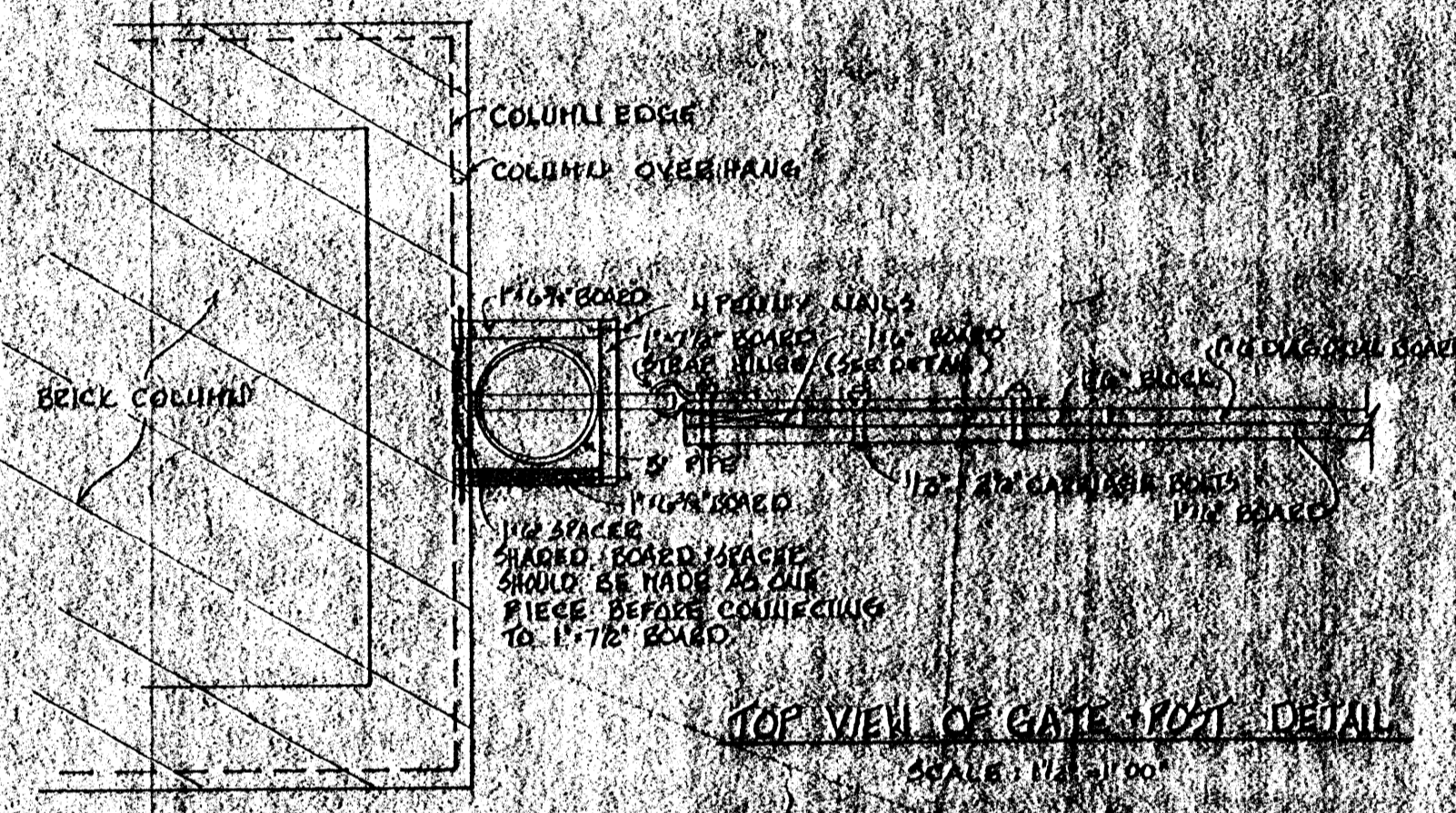


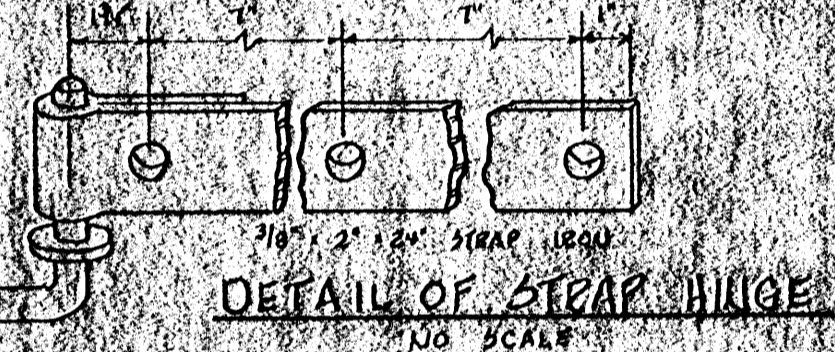
**FRONT FENCE ELEVATION**  
SCALE: 1/8" = 1'-0"



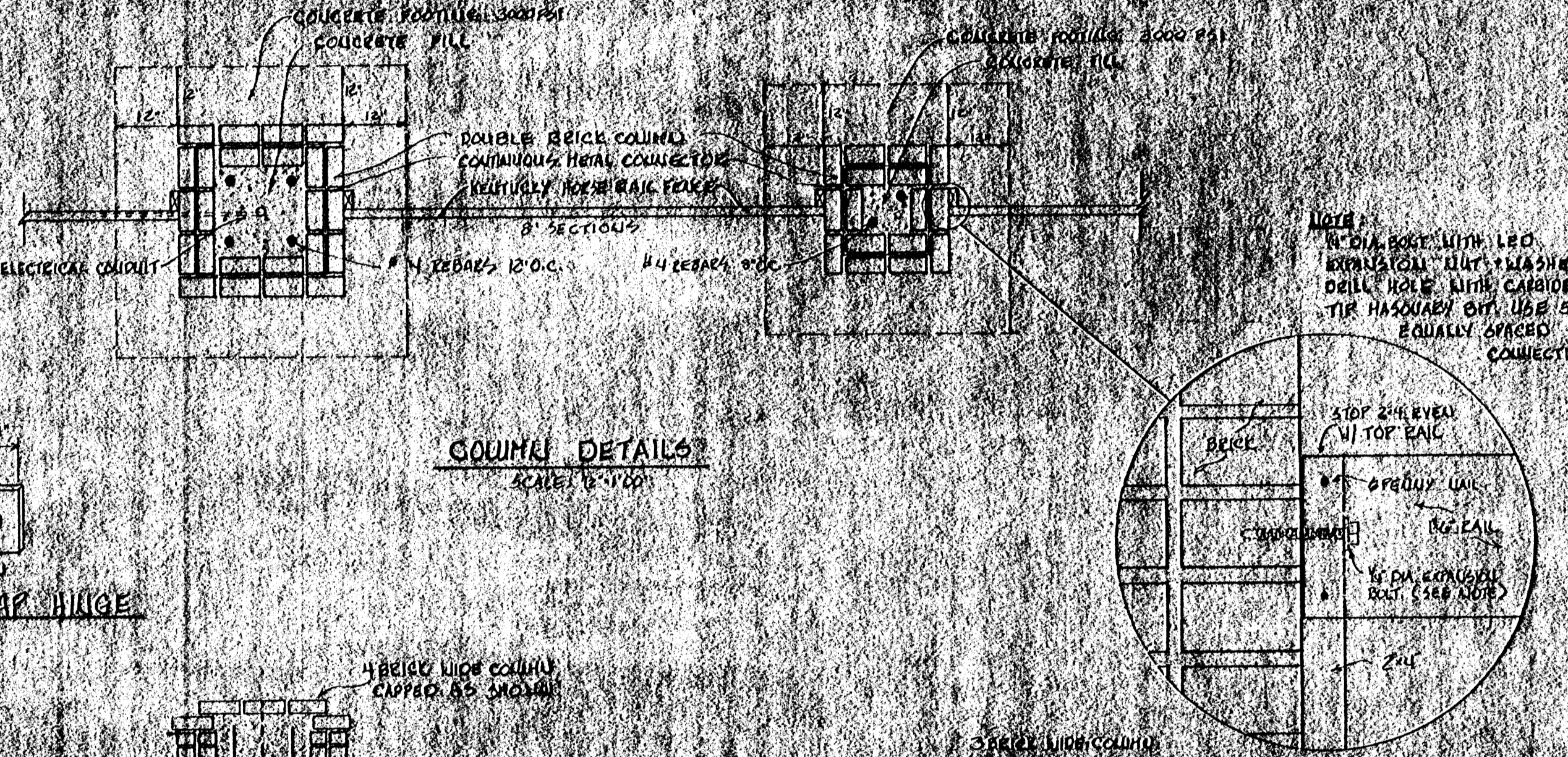
**FOR COLUMNS & OPTIONAL BRICK PATTERNS FOR COLUMNS**  
SCALE: 1/2" = 1'-0"



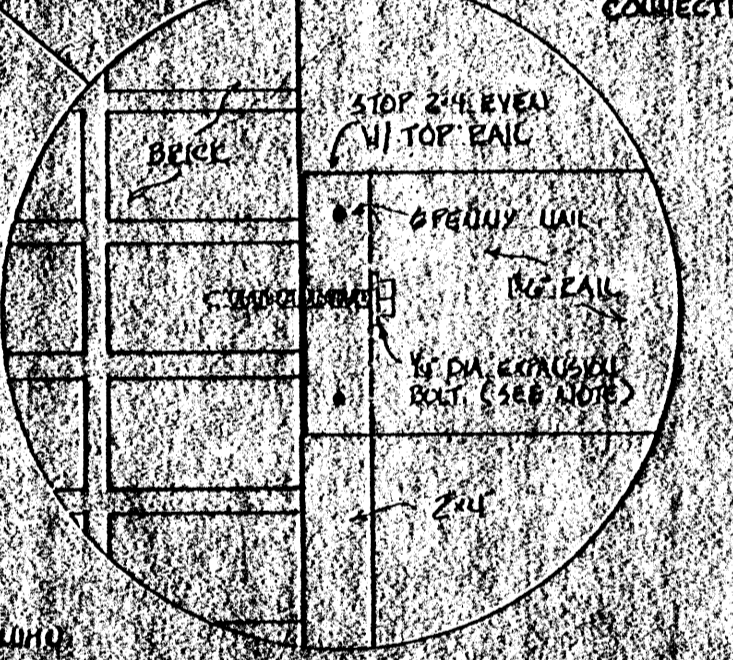
**TOP VIEW OF GATE POST DETAIL**  
SCALE: 1/4" = 1'-0"



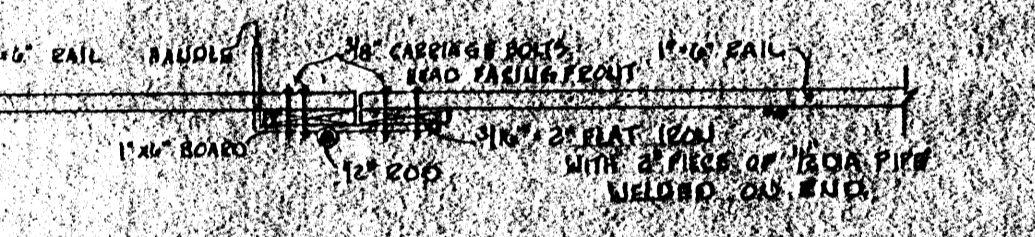
**DETAIL OF STRAP HINGE**  
NO SCALE



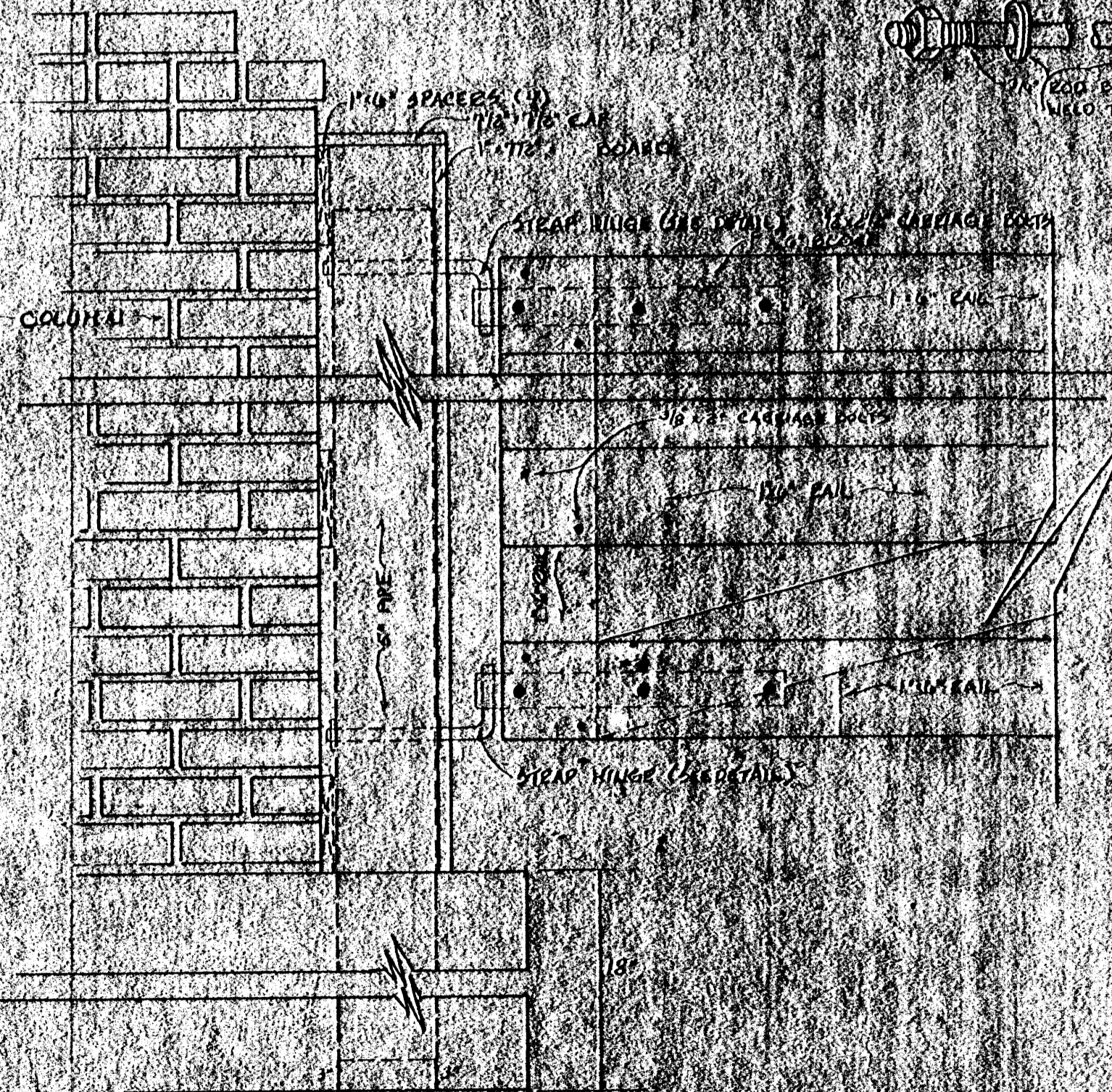
**COLUMN DETAILS**  
SCALE: 1/2" = 1'-0"



**FENCE COLUMN CONNECTION DETAIL**  
SCALE: 2" = 1'-0"



**GATE LATCH DETAIL**  
SCALE: 1/2" = 1'-0"



**GATE + POST CONNECTION**  
SCALE: 1/2" = 1'-0"

**NOTES**

- ALL WOOD BETWEEN COLUMNS TO BE AT LEAST ONE TREATED PINE. NAIL HARDWARE + FASTENERS TO BE TREATED TO PREVENT EUST CAUSED BY MOISTURE. MOISTURE PROOF COATING TO BE APPLIED TO ALL EXPOSED WOOD.
- FENCE IS BUILT ACCORDING TO BLUE PRINTS PLAN # 1781. KENTUCKY HORSE FENCE. ANOTHER RAIL IS ADDED WHERE INDICATED ON FRONT FENCE ELEVATION.



CONSTRUCTION DRAWINGS		PL. NO. 0220
<b>ENTRY GATE</b>		
DESIGN BY J. PERRY	SHEET	
DRAWN BY D. FILES	1	
DATE 10/19/22	OF	