



MISSISSIPPI STATE
UNIVERSITY™

EXTENSION

Weed Identification

Family: Convolvulaceae (Morningglory)

**Tall
morningglory**
(*Ipomoea purpurea*)

VS

**Palmleaf
morningglory**
(*Ipomoea wrightii*)



seedling stage

cotyledon



seedling stage

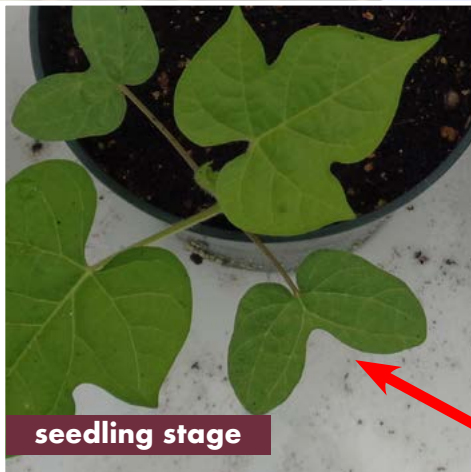
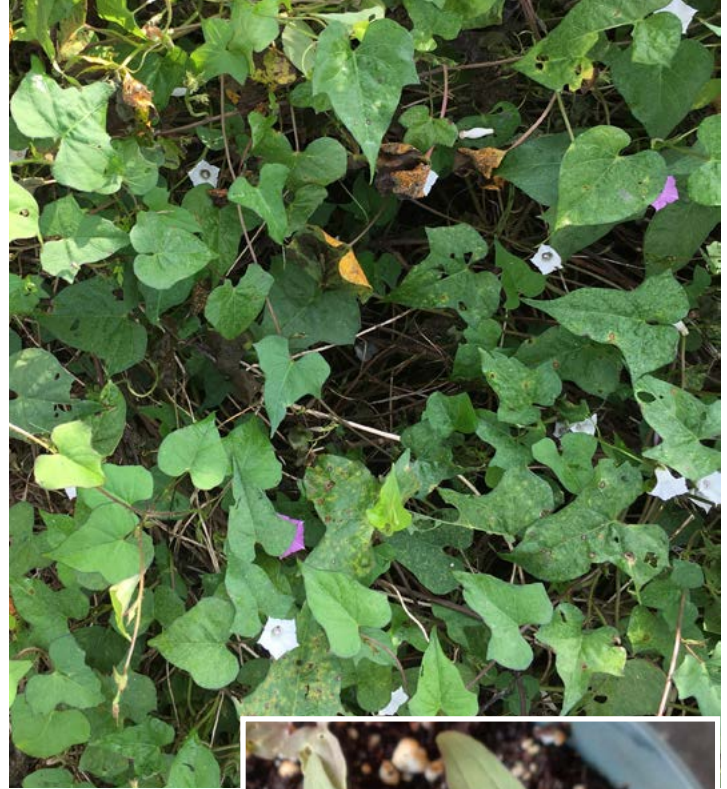
cotyledon

Family: Convolvulaceae (Morningglory)

Ivyleaf morningglory (*Ipomoea hederacea*)

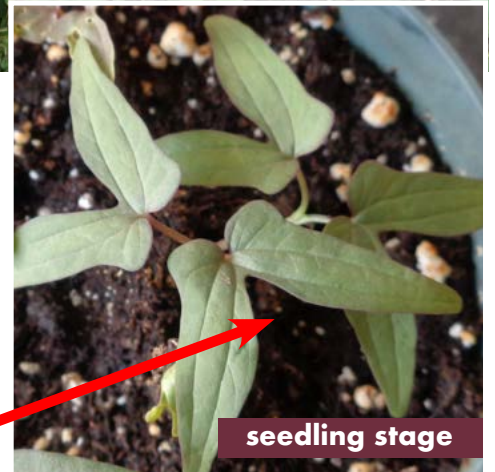
VS

Pitted morningglory (*Ipomoea lacunosa*)



seedling stage

cotyledon



cotyledon

seedling stage

Remember:
One weed seed is enough to start an infestation.

Publication 3764 (POD-07-24)

By **Taghi Bararpour**, PhD, Associate Extension/Research Professor, Delta Research and Extension Center and **Te-Ming Paul Tseng**, PhD, Associate Professor, Plant and Soil Sciences.

Copyright 2024 by Mississippi State University. All rights reserved. This publication may be copied and distributed without alteration for nonprofit educational purposes provided that credit is given to the Mississippi State University Extension Service.

Produced by Agricultural Communications.

Mississippi State University is an equal opportunity institution. Discrimination in university employment, programs, or activities based on race, color, ethnicity, sex, pregnancy, religion, national origin, disability, age, sexual orientation, gender identity, genetic information, status as a U.S. veteran, or any other status protected by applicable law is prohibited.

Extension Service of Mississippi State University, cooperating with U.S. Department of Agriculture. Published in furtherance of Acts of Congress, May 8 and June 30, 1914. ANGUS L. CATCHOT JR., Director